

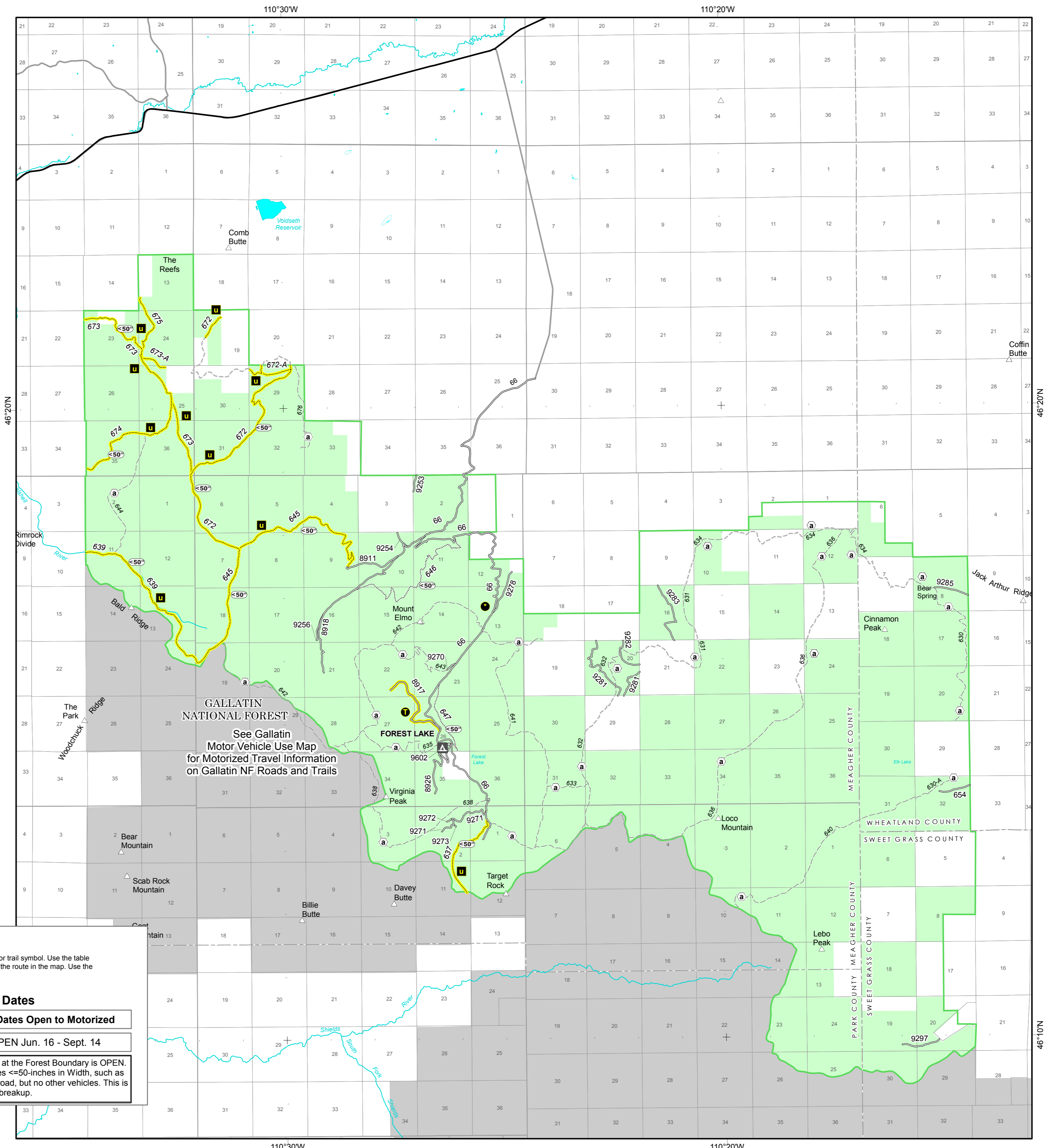
Crazy Mountains Travel Map

Helena-Lewis and Clark National Forest
2016



See table for seasonal open dates. For current Travel Management information, the user is urged to acquire a paper copy of the Motor Vehicle Use Map (MVUM) from the Helena-Lewis and Clark National Forest.

- Forest or Unit Boundary
 - Non-National Forest System Lands within the National Forest
 - USFS
 - Ridges and summits
 - Non-Motorized Trails - No motorized vehicles are allowed on these trails
 - Other Roads: Not all roads are shown on this map, including those that are private accessing or within the Forest boundary.
 - Other Routes - May not be open to public use.
- Roads Open to Vehicle Traffic**
- Roads Open to Highway Legal Vehicles - These roads are open only to motor vehicles licensed under State law for general operation on all public roads within the State.*
- Roads Open to Highway Legal Vehicles
 - Roads Open to Highway Legal Vehicles, Seasonally (See Table)
- Motorized Trails**
- Trails Open to Wheeled Vehicles 50 inches or Less in Width - These trails are open only to wheeled motor vehicles less than 50 inches in width at the widest point on the vehicle.*
- Trails Open to Wheeled Vehicles Only 50" or Less in Width, Yearlong
 - Trails Open to Wheeled Vehicles Only 50" or Less in Width, Seasonal



GALLATIN NATIONAL FOREST
See Gallatin Motor Vehicle Use Map for Motorized Travel Information on Gallatin NF Roads and Trails

Seasonal Route Table

Routes with seasonal restrictions are masked in yellow under the road or trail symbol. Use the table below to determine the legal seasons of use, based on the letter next to the route in the map. Use the legend above to determine the type of vehicle allowed on the route.

Road Open Dates		Trail Open Dates	
Symbol	Dates Open to Motorized	Symbol	Dates Open to Motorized
	OPEN Jul. 1 - Aug. 31		OPEN Jun. 16 - Sept. 14
	* Road 66 is open to highway legal road vehicles when gate at the Forest Boundary is OPEN. When the gate is CLOSED you may drive Wheeled Vehicles <=50-inches in Width, such as 50-inch or less side-by-sides, ATVs, and motorcycles on the road, but no other vehicles. This is to protect the road surface during periods of mud and spring breakup.		