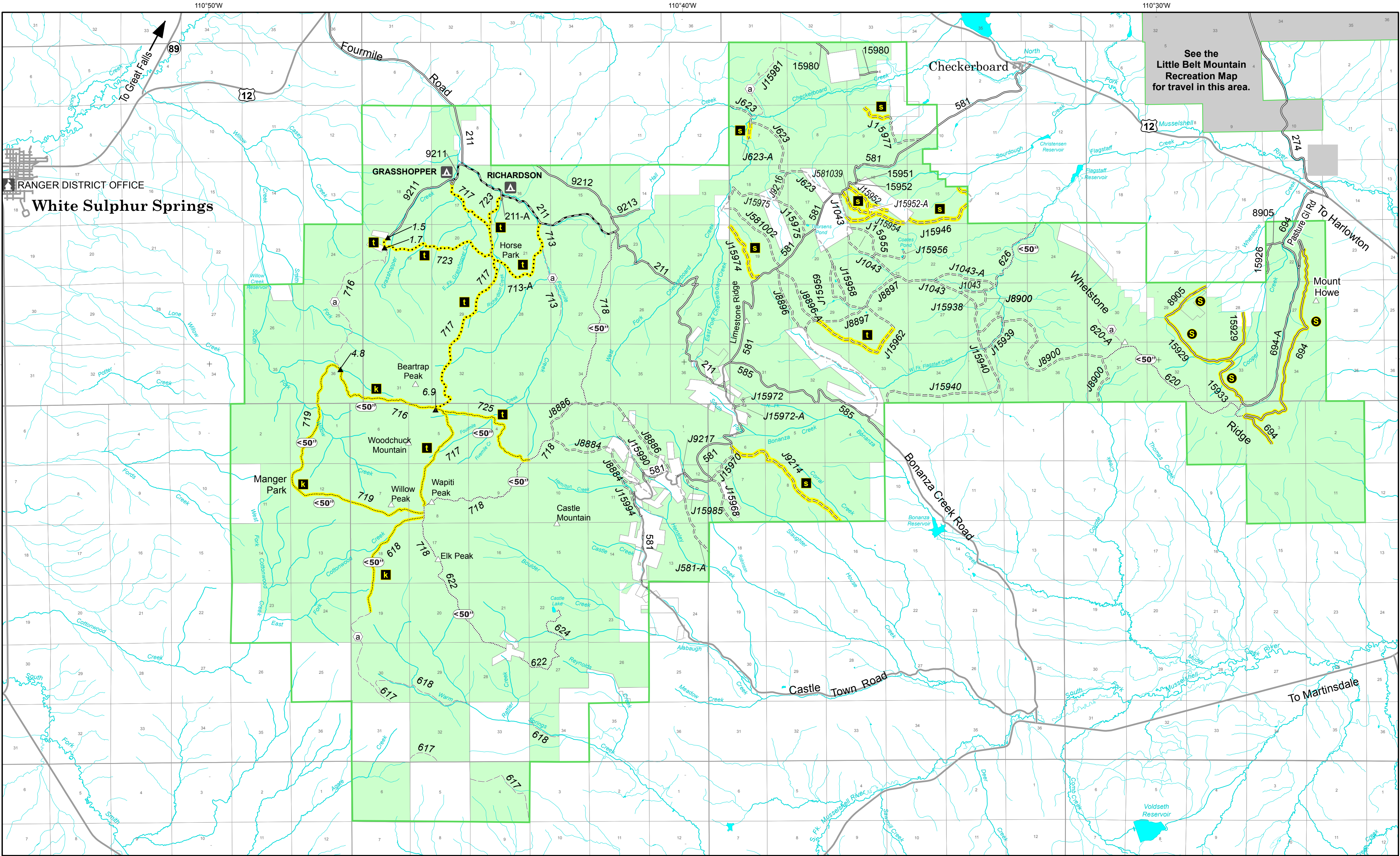


Castle Mountains Travel Map, 2017
Helena-Lewis and Clark National Forest



See table for seasonal open dates. For current Travel Management information, the user is urged to acquire a paper copy of the Motor Vehicle Use Map (MVUM) from the Helena-Lewis and Clark National Forest.



North American Datum of 1983 (NAD 83)
Universal Transverse Mercator, zone 12N

1:63,360

0

1

2

3

4

5

Miles

Forest or Unit Boundary

National Forest System Lands

Non-National Forest System Lands within the National Forest

Forest Service Office

Peaks

Forest Service Campground

Non-Motorized Trails No motorized vehicles are allowed on these trails

Other Roads

Other Routes - May not be open to public use.

Milepost Marker - This symbol is used to display the beginning and ending mileposts of a road that has a change in the designation but not the symbology.

Roads Open to Vehicle Traffic

Roads Open to All Vehicles - These roads are open to all motor vehicles, including smaller off-highway vehicles that may not be licensed for highway use (but not to oversize or overweight vehicles under State traffic law).

Roads Open to All Vehicles, Yearlong

Roads Open to All Vehicles, Seasonally (See Table)

Roads Open to Highway Legal Vehicles - These roads are open only to motor vehicles licensed under State law for general operation on all public roads within the State.

Roads Open to Highway Legal Vehicles

Roads Open to Highway Legal Vehicles, Seasonally (See Table)

Motorized Trails

Trails Open to All Vehicles - These trails are open to all motor vehicles,

Trails Open to All Vehicles, Yearlong

Trails Open to All Vehicles, Seasonally (See Table)

Trails Open to Motorcycles Only - These trails are open only to motorcycles. No sidecars are permitted.

Trails Open to Motorcycles Only, Seasonally (See Table)

Trails Open to Wheeled Vehicles 50 inches or Less in Width - These trails are open only to wheeled motor vehicles less than 50 inches in width at the widest point on the vehicle.

Trails Open to Wheeled Vehicles Only 50" or Less in Width, Yearlong

Trails Open to Wheeled Vehicles Only 50" or Less in Width, Seasonal

Seasonal Route Table

Routes with seasonal restrictions are masked in yellow under the road or trail symbol. Use the table below to determine the legal seasons of use, based on the letter next to the route in the map. Use the legend to the left to determine the type of vehicle allowed on the route.

Road Open Dates

Symbol	Dates Open to Motorized
K	OPEN Jul. 1 - Aug. 31
S	OPEN Dec. 1 - Aug. 31

Trail Open Dates

Symbol	Dates Open to Motorized
k	OPEN Jul. 1 - Aug. 31
s	OPEN Dec. 1 - Aug. 31
t	OPEN Dec. 1 - Oct. 14

NAD 1983 UTM Zone 12N, September 15, 2017