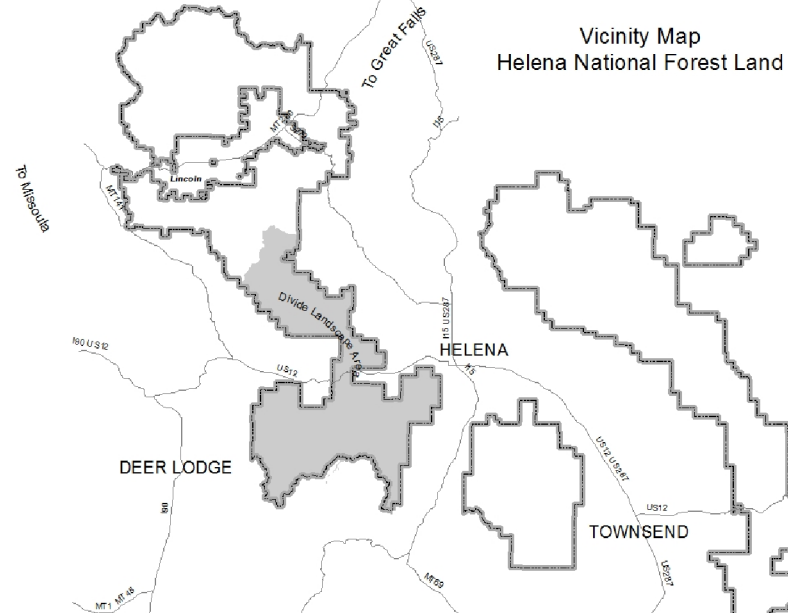


Divide Landscape Travel Map Helena-Lewis & Clark National Forest Helena Ranger District 2016



Map URL:
https://www.fs.usda.gov/Internet/FSE_DOCUMENTS/fseprd513103.pdf



Legend

- State or County Road
- Road - open to licensed vehicles
- Primitive road - open to licensed vehicles (see below)
- Trail - open to vehicles 50" or less in width
- Trail - non-motorized use
- Continental Divide National Scenic Trail (CDNST)
- CDNST - Motorized
- CDNST - Non-Motorized
- Designated route with seasonal motorized restrictions
- Dispersed Campsites
- Campground
- Picnic Site
- Trailhead
- Open for snowmobiling 12/2-5/15
- Closed to snowmobiling, except on designated routes

****Primitive Road - not maintained - use at your own risk**

ROUTE RESTRICTIONS

Designated Route Seasonal Restrictions
Routes open to motorized use are open yearlong unless a seasonal use restriction is indicated on the route. These routes are closed to motorized use during the periods shown, except for snowmobile use in designated open snowmobile areas from 12/2-5/15. Snowmobile use is restricted on all routes and open snowmobile areas from 5/16-12/1

- 2 Closed to motorized use 10/15-12/1
- 5 Closed to motorized use 10/15-5/15
- 7 Closed to motorized use 9/1-5/15
- 9 Closed to motorized use 10/15-6/30

Food Storage Information

National Forest System lands within the Divide Landscape fall within the Northern Continental Divide Ecosystem, and are subject to specific food storage requirements designed to minimize human-grizzly bear conflicts. Minimizing human-bear encounters and conflicts, will help provide for visitor safety and recovery of the grizzly bear within this corridor.

All attractants, defined as food and beverages (including canned food, pop, and beer), grease, garbage, livestock and pet food (except hay without additives and water), must be stored in an approved bear resistant manner when your camp or picnic area is unattended. Attractants cannot be burned in an open campfire, buried, or discarded.

What is an approved "bear resistant manner"? It means any attractants must be stored by one of the following methods:

- Secured in a hard-sided camper, vehicle trunk, cab or trailer cab
- Secured in a hard-sided dwelling or storage building
- Suspended at least 10 feet up and 4 feet out from any upright support (like a tree or pole)
- Stored within an approved and operating electric fence
- Stored within an approved bear resistant container
- Stored in any combination of these methods

Parking

Parking is allowed up to 30 feet from the edge of a designated route.

Access to Dispersed Campsites up to 70' from a designated route

Parking and motor vehicle use associated with dispersed camping is allowed no more than 70 feet from the edge of a designated route as long as:

- No new permanent routes are created by this activity (minimize number of trips).
- No damage to existing vegetation, soil, or water resources i.e., damage to live trees and shrubs, rutting, and eroding of stream banks or bare soil.
- Travel off-route does not cross streams.
- Travel off-route does not traverse riparian or wet areas.
- Travel to and parking associated with dispersed campsites is limited to no closer than 30 feet of a stream or body of live water.

Access to Dispersed Campsites further than 70' from a designated route

Dispersed campsites located more than 70 feet from the edge of a designated route that are identified on this map are open for dispersed camping and parking associated with dispersed camping. The five items identified under the access to dispersed campsites up to 70' from a designated route section are applicable for these sites as well.

Operator Responsibilities

Operating a motor vehicle on National Forest System roads, National Forest System trails, and in areas on National Forest System lands carries a greater responsibility than operating that vehicle in a city or other developed setting. Not only must you know and follow all applicable traffic laws, you need to show concern for the environment as well as other forest users. The misuse of motor vehicles can lead to the temporary or permanent closure of any designated road, trail, or area. As a motor vehicle operator, you are also subject to State traffic law, including State requirements for licensing, registration, and operation of the vehicle in question.

Motor vehicle use, especially off-highway vehicle use, involves inherent risks that may cause property damage, serious injury, and possibly death to participants. Drive cautiously and anticipate rough surfaces and features such as snow, mud, vegetation, and water crossings common to remote driving conditions. By your Participation, you voluntarily assume full responsibility for these damages, risks, and dangers. Take care at all times to protect yourself and those under your responsibility.

Much of the Helena-Lewis and Clark National Forest is remote. Medical assistance may not be readily available. Cellular telephones do not work in many areas of the Helena-Lewis and Clark National Forest. Operators should take adequate food, water, first-aid supplies, and other equipment appropriate for the conditions and expected weather.

ALWAYS REMEMBER TO RESPECT PRIVATE LAND! PROTECT YOUR PRIVILEGE. STAY ON DESIGNATED ROADS, TRAILS, AND IN DESIGNATED AREAS.

Read and understand this map in its entirety. If you have questions, please contact the Helena-Lewis and Clark National Forest for clarification.

As a motor vehicle operator on a National Forest System road, trail, or area, you must comply with this map, as well as all Federal, State, and local laws and regulations.

Compliance with these rules is your responsibility.

Prohibitions

It is prohibited to possess or operate a motor vehicle on National Forest System lands on the Helena-Lewis and Clark National Forest other than in accordance with these designations (36 CFR 261.13).

Violators of 36 CFR 261.13 are subject to a fine of up to \$5,000, imprisonment for up to 6 months or both (18 U.S.C. 3571(e)). This prohibition applies regardless of the presence or absence of signs.

Designated roads, trails, and areas may also be subject to temporary, emergency closures. As a visitor, you must comply with signs notifying you of such restrictions. A national forest may issue an order to close a road, trail, or area on a temporary basis to protect the life, health, or safety of forest visitors or the natural or cultural resources in these areas. Such temporary and/or emergency closures are consistent with the Travel Management Rule (36 CFR 212.52 (b), 36 CFR 261 subpart B).

The designation "road or trail open to all motor vehicles" does not supersede vehicle size or weight limits imposed through State traffic law.

Forest Service



United States Department of Agriculture
INFORMATION SOURCES

Contacts

Helena Ranger District: (406) 449-5201
Lewis & Clark County Sheriff: (406) 442-3441
Powell County Sheriff: (406) 847-2711
Broadwater County Sheriff: (406) 268-3441
Jefferson County Sheriff: (406) 225-4075
BLM: (406) 533-7600
Emergency 911
To Report Violations in progress or after hours
TIP-MONT 1-800-847-6668

The U.S. Department of Agriculture (USDA) prohibits discrimination in all its programs and activities on the basis of race, color, national origin, age, disability, and where applicable, sex, marital status, familial status, parental status, religion, sexual orientation, genetic information, political beliefs, reprisal, or because all or part of an individual's income is derived from any public assistance program. (Not all prohibited bases apply to all programs.) Persons with disabilities who require alternative means for communication of program information (Braille, large print, audiotape, etc.) should contact USDA's TARGET Center at (202) 720-2600 (voice and TDD). To file a complaint of discrimination, write to USDA, Director, Office of Civil Rights, 1400 Independence Avenue, S.W., Washington, D.C. 20250-9410, or call (800) 795-3272 (voice) or (202) 720-6382 (TDD). USDA is an equal opportunity provider and employer.

Disclaimer:
The Forest Service uses the most current and complete data available. GIS data and product accuracy may vary. They may be developed from sources of differing accuracy, accurate only at certain scales, based on modeling or interpretation, incomplete while being created or revised, etc. Using GIS products for purposes other than those for which they were created may yield inaccurate or misleading results. The Forest Service reserves the right to correct, update, modify or replace GIS products without notification. For more information contact:
Helena-Lewis and Clark National Forest
2800 Skyway Drive
Helena, Montana 59602
406-449-5201

treadlightly!
LEAVING A GOOD IMPRESSION



0 2.75 5.5 11 Miles