



Forest Service U.S. DEPARTMENT OF AGRICULTURE

Helena-Lewis and Clark National Forest | R1-23-20 | March 2023

Recently the Helena-Lewis and Clark National Forest, in partnership with the Natural Resources Conservation Service (NRCS), successfully obtained \$2.8 million in [Joint Chiefs' Landscape Restoration Partnership](#) national investment funding for the Elkhorn Range, south of Helena.

Improvements will be made on 6,270 acres of private land and 13,500 acres of Forest Service lands within southwest Montana's Elkhorn Cooperative Management Area. High priority treatment areas for this project include a municipal watershed and numerous communities and residential developments at high wildfire risk in the wildland urban interface. Management activities on the unit will span several forest types and will include the reduction of conifer colonization in grasslands and shrublands that will increase habitat diversity for additional wildlife species and improve the resilience of the local landscape. Meadow and shrubland restoration, the reintroduction of fire, and weed mitigation efforts will improve high-quality wildlife habitat into the future and restore grasslands to more historic conditions.

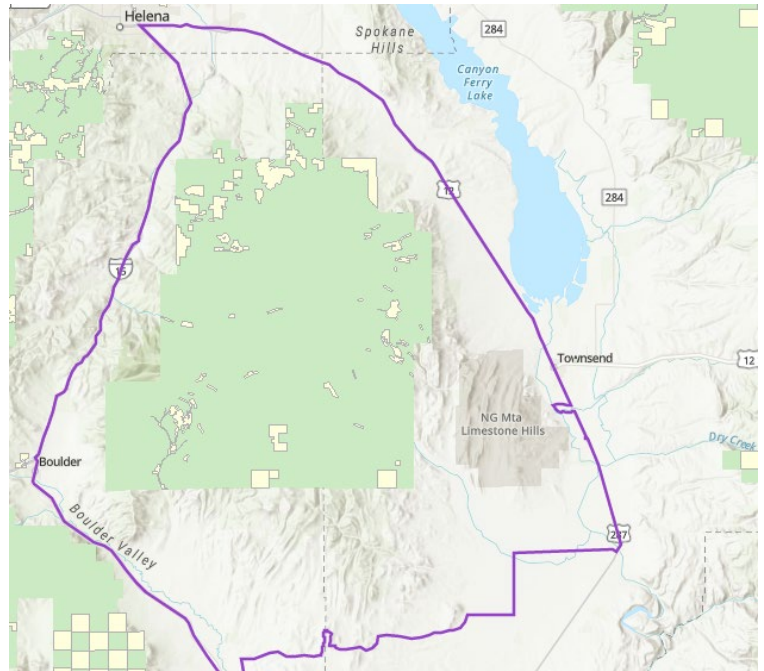


Figure 1 - project area map in relation to Helena, Townsend, and Boulder.



Figure 2 - Bugling bull elk in project area

The project area is a mix of private, county, state and federal (NFS, BLM and Department of Army) managed lands, and presents a unique opportunity to work across boundaries to increase overall project efficiency and effectiveness.

The project area spans Jefferson and Broadwater counties and the communities of Townsend, Boulder, Jefferson City, Clancy, Montana City, East Helena, Winston and Radersburg.

More information about this project will be shared as it becomes available.

For more information about activities on the Helena-Lewis and Clark National Forest, please visit the following links:

- Helena – Lewis and Clark NF [Webpage](https://www.fs.usda.gov/hlcnf) | <https://www.fs.usda.gov/hlcnf>
- Helena – Lewis and Clark NF [Facebook Page](https://www.facebook.com/HLCNF/) | <https://www.facebook.com/HLCNF/>