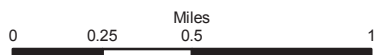


Lick Creek Cave Closure

Forest Order-01-15-07-23-13

Belt Creek - White Sulphur Springs
Ranger District



Lick Creek Cave



City

Stream/River: Perennial

MVUM Road Allow

3- Open to Highway Legal Vehicles Only; Yearlong

15 - Other Public Roads



Administrative Boundary

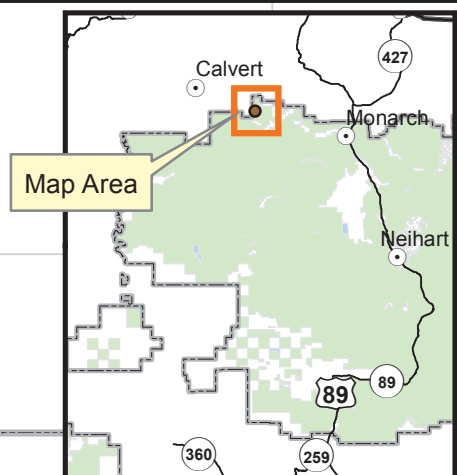
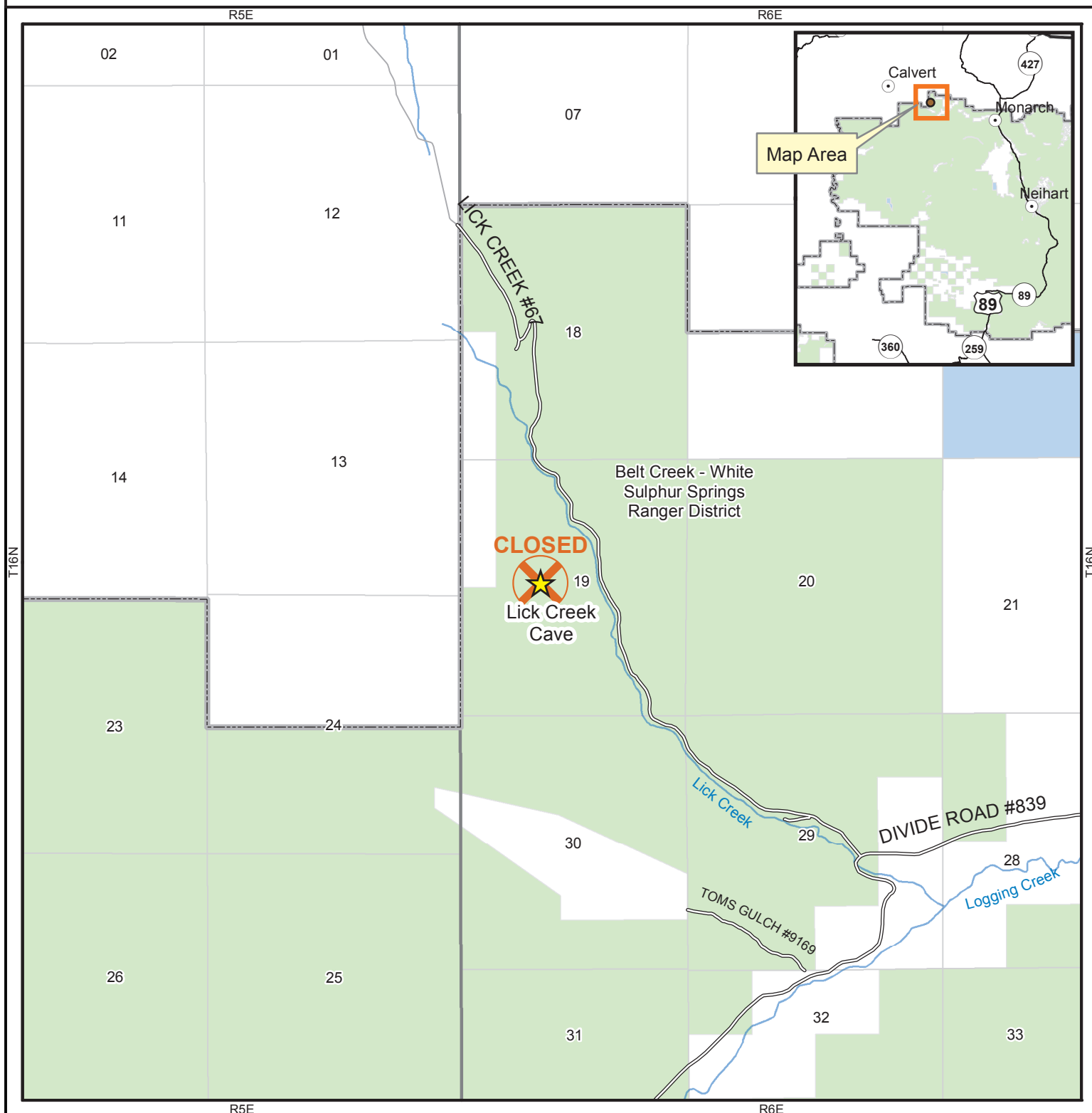


District Boundary

Ownership

USFS

STATE



The Forest Service uses the most current and complete data available. GIS data and product accuracy may vary. They may be: developed from sources of differing accuracy, accurate only at certain scales, based on modeling or interpretation, incomplete while being created or revised, etc. Using GIS products for purposes other than those, for which they were created, may yield inaccurate or misleading results. The Forest Service reserves the right to correct, update, modify, or replace, GIS products without notification. For more information please contact:
Helena-Lewis and Clark National Forest, 2880 Skyway Drive, Helena, MT 59602, Phone (406) 449-5201
By: WilliamGoldrick, 7/18/2023
T:\FS\NFS\HelenaLewisClark\Program\6800InformationMgmt\GIS\ClosureMaps\2023_LickCreek\LickCreek.mxd\LickCreek