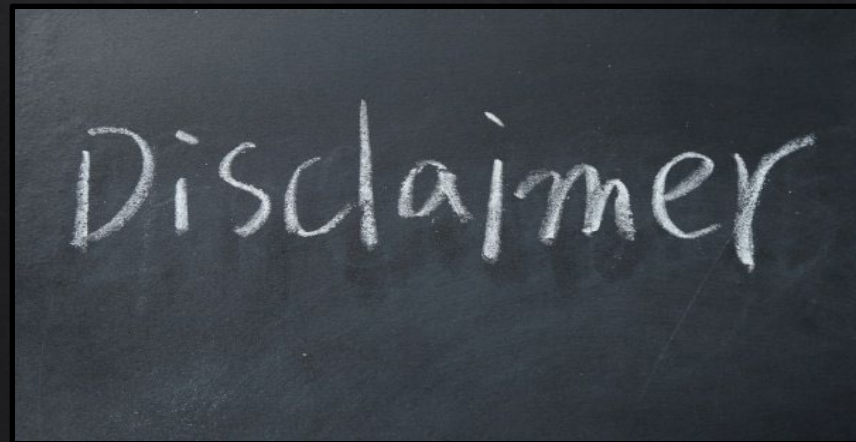


Example of TEUI Data Use in GIS Analysis: Vegetation Management Example

Eric Robertson
Supervisory Soil Scientist
AZ Zone TEUI Program

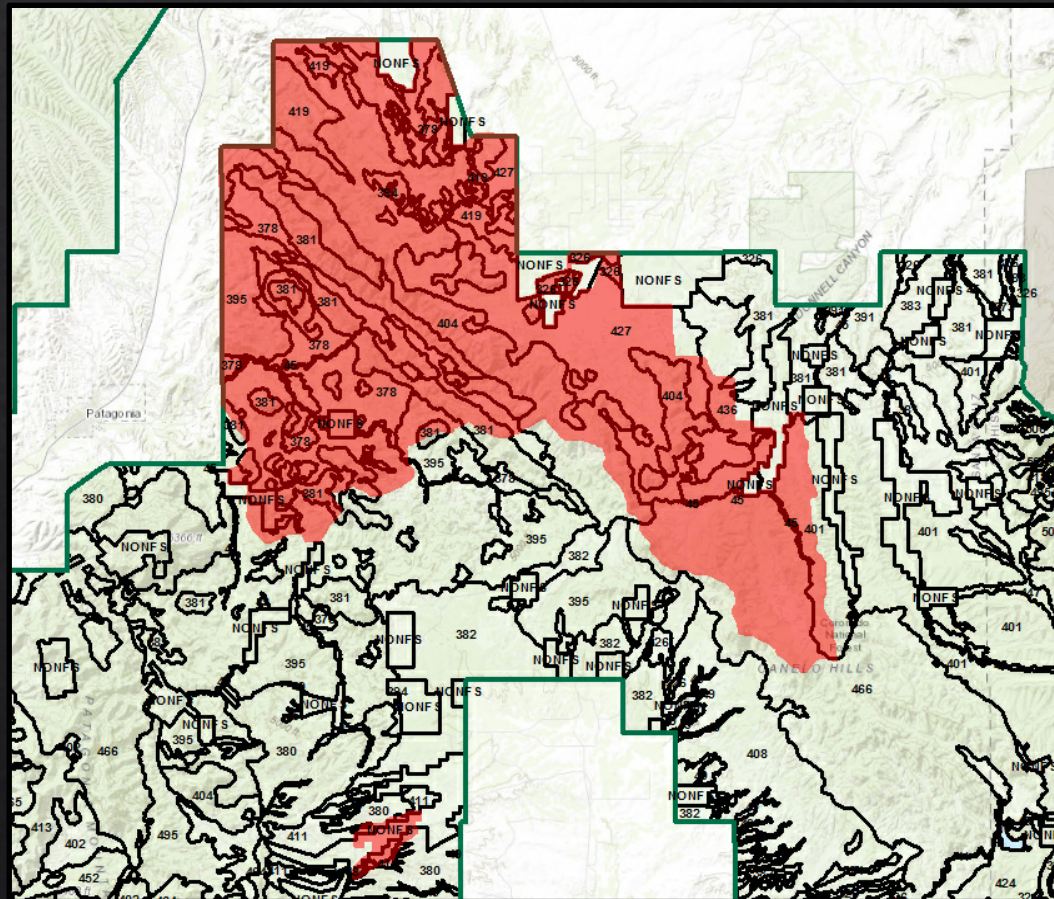
Quick Disclaimer

- ◇ The following example of TEUI data use is hypothetical.
- ◇ A project area relevant to the Coronado NF was used in this example.
- ◇ There is no prior knowledge of the status of the project, nor any about the nature of the proposed activities.



Vegetation Management Example

- ◆ The Canelo Hills Allotments Range NEPA has been signed and one of the proposed activities is woodland and grassland restoration treatments to address woody species encroachment that is occurring across the area.



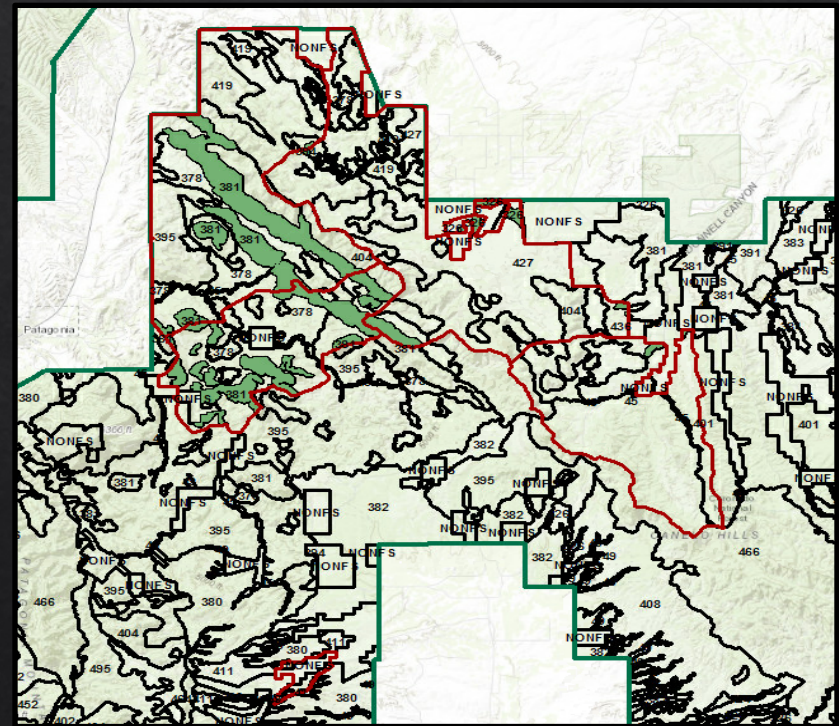
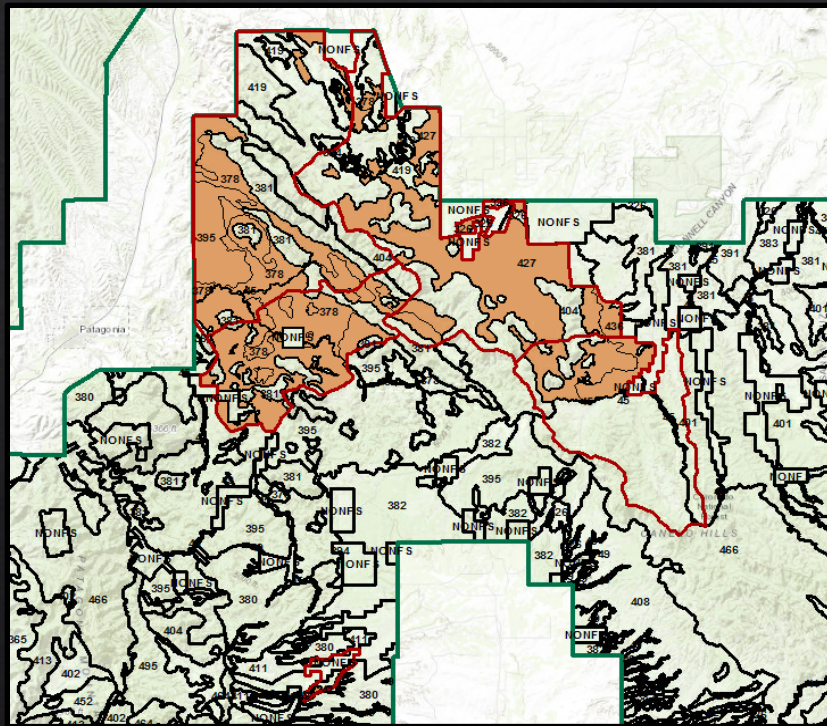
Vegetation Management Example

- ◇ You're a specialist on the district and you've been tasked with identifying some areas that may be suitable for mechanical treatment utilizing ground-based harvesting for commercial fuelwood sales in both grassland and woodland types.



Vegetation Management Example

- Once you've created a new layer from this selection with an export, it could be further separated by individual selections of woodland types vs. grassland types (<40% slope) and an export of two new layers.



Vegetation Management Example

- ◇ For the next step in the analysis, the concern might be about potential ground disturbance from mechanized equipment usage and its impact on soil erosion/site recovery that may occur in the woodland types due to a projected large volume removal.



Vegetation Management Example

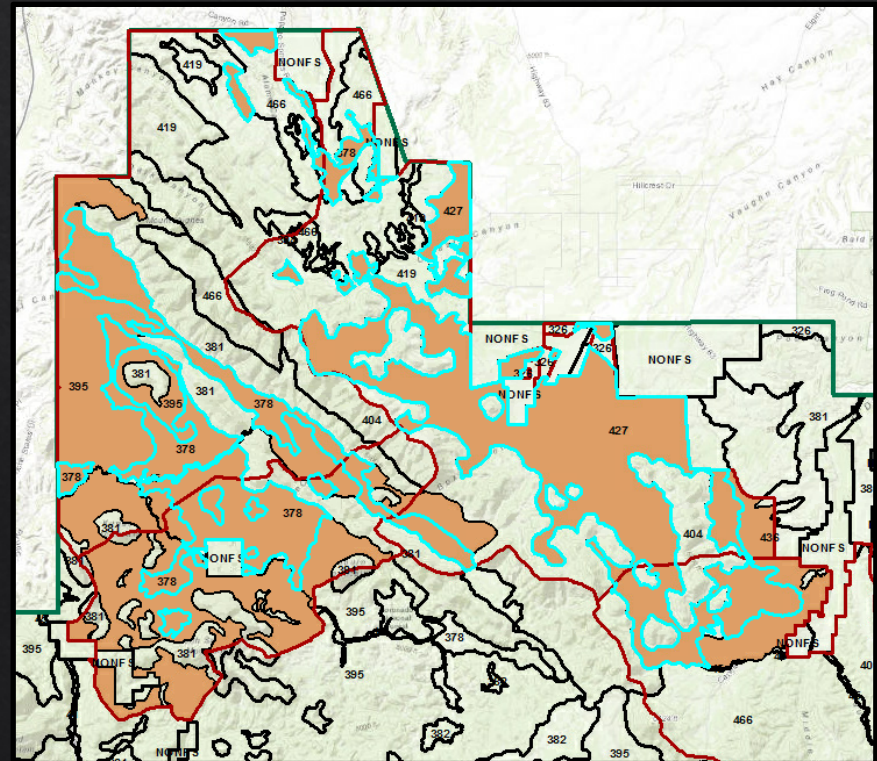
- ◇ Next you could examine TEUI interpretations that might give you some idea of units with the least concern for soil erosion in the woodland types.
- ◇ Some interpretations to look at could be:
 - ◇ Surface Soil Erodibility – surface soil erosion based solely on surface rock fragment content and surface texture.
 - ◇ Hydrologic Soil Group (HSG) – characterize soil properties like soil depth, soil texture, mineralogy, and rock fragment content which affect general soil hydrologic features (permeability, drainage, etc.).



Vegetation Management Example

◇ So, essentially it becomes an exercise in isolating or selecting those units that may be best suited to “handle” or potentially recover from ground disturbance due to lesser concern for soil erosion using the following criteria:

- ◇ Meets at least two of the following:
 - ◇ HSG of C (Moderately High Run-off Potential) or less (B or A)
 - ◇ Surface Soil Erodibility Factor Rating of Low
 - ◇ Map unit slope range of 15% or less



Vegetation Management Example

- ◆ Finally, an export of this selection from the previous layer would give you an area that represents potentially the most “suitable” mechanical treatment locations in the woodland type across the Canelo Hills Allotments project area (~10,544 acres).

