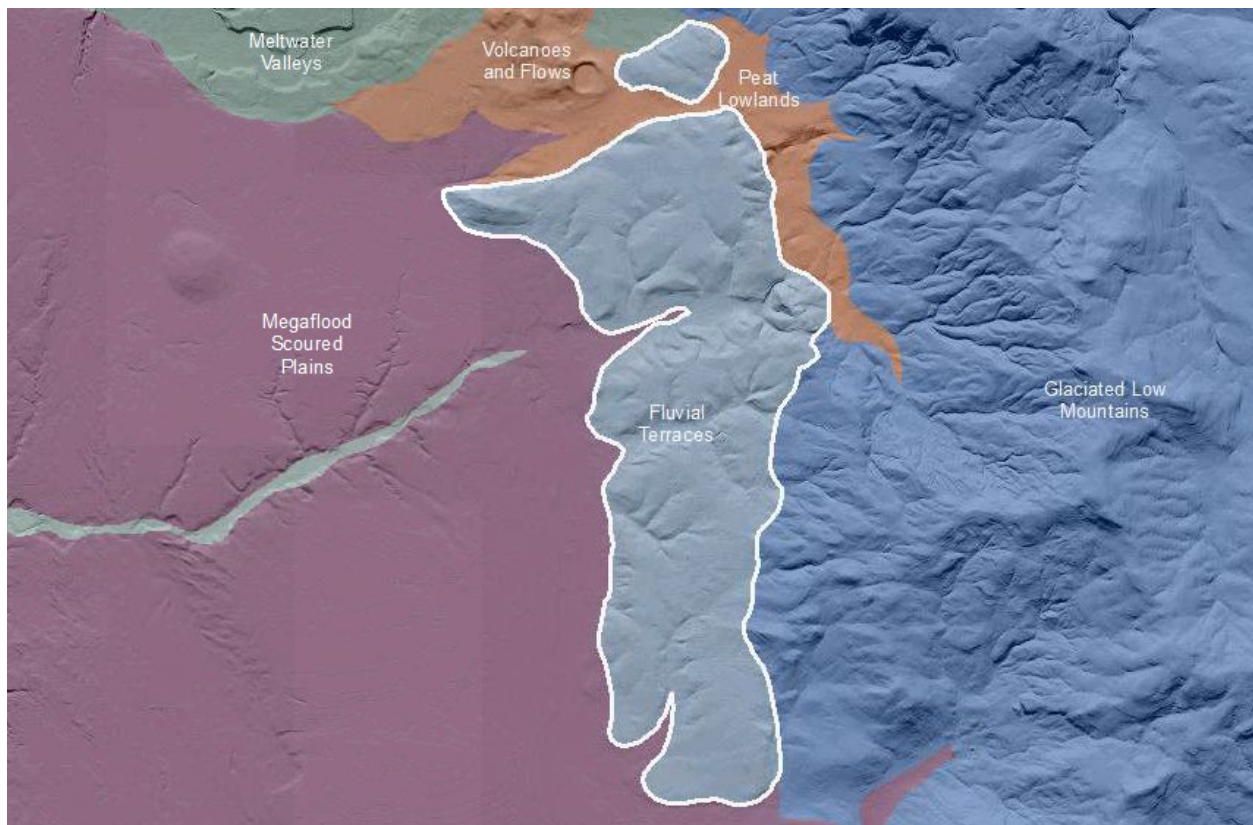


Blue Mountains Fluvial Terraces

Valley [Landscape Term] (a) Any low-lying land bordered by higher ground; esp. an elongate, relatively large, gently sloping depression of the Earth's surface, commonly situated between two mountains or between ranges of hills or mountains, and often containing a stream with an outlet. It is usually developed by stream erosion, but may be formed by faulting. (b) A broad area of generally flat land extending inland for a considerable distance, drained or watered by a large river and its tributaries; a river basin. (Bates and Jackson, 1995)

Landform Association:

Fluvial Terraces



Fluvial Terraces are a step-like surface, bordering a valley floor that represents the former position of a flood plain. Fluvial Terraces characteristics are similar to Fluvial Valleys except this area is recognized as an ancient remnant of an earlier fluvial valley floor (flood plain) now preserved as an upland element. Soils are more mature than the lower, more recent Fluvial Valley landscapes and include Alfisols (and Ultisols in the west).

This Landform Association is rare on National Forest System Lands.

Landtype Associations: Landtype Associations are formed by intersecting vegetation series or groups of vegetation series with Landform Associations.

Topography:

The following tables represent the average conditions for the Landform Association. Only lands within and adjacent to National Forest System Lands were mapped by this project. The entire EPA Level III Ecoregion is not covered by this mapping.

The percent of Landform Association (% of LfA) in bold in the table below refers to the percent of the Ecoregion represented by that Landform Association. The (% of LfA) numbers not in bold in the table below refer to the percent of each Landtype Association within the Landform Association.

Landform Association/Landtype Association	% of LfA	Mean % Slope	Minimum Elevation (m)	Maximum Elevation (m)	Mean Elevation (m)	% Northerly Aspect (226° - 134°)	% Southerly Aspect (135° - 225°)
Fluvial Terraces	0.0%	10	1164	1253	1207	76%	24%
Fluvial Terraces, Shrub-Steppe - Ponderosa Pine	100.0%	10	1164	1253	1207	76%	24%

Climate:

Landform Association/Landtype Association	Mean Annual Precipitation (mm)	Mean Annual Temperature °C	AET/PET Ratio July, Aug, Sept
Fluvial Terraces	362	8	0.09
Fluvial Terraces, Shrub-Steppe - Ponderosa Pine	362	8	0.09

The ratio of Actual Evapotranspiration to Potential Evapotranspiration (AET/PET) is used as a broad-scale indicator of potential drought stress. We obtained modeled actual and potential evapotranspiration datasets from the Numerical Terradynamic Simulation Group at the University of Montana (<http://www.ntsug.umt.edu/project/mod16>) for a 30 year climate average. AET/PET ratio in the table above is based on a scale of zero to one. A value closer to 1 means the vegetation is transpiring close to its potential. A value farther from 1 means that the Actual Evapotranspiration is below potential based on this climatic zone (Ringo, et. al. 2016 in draft).