

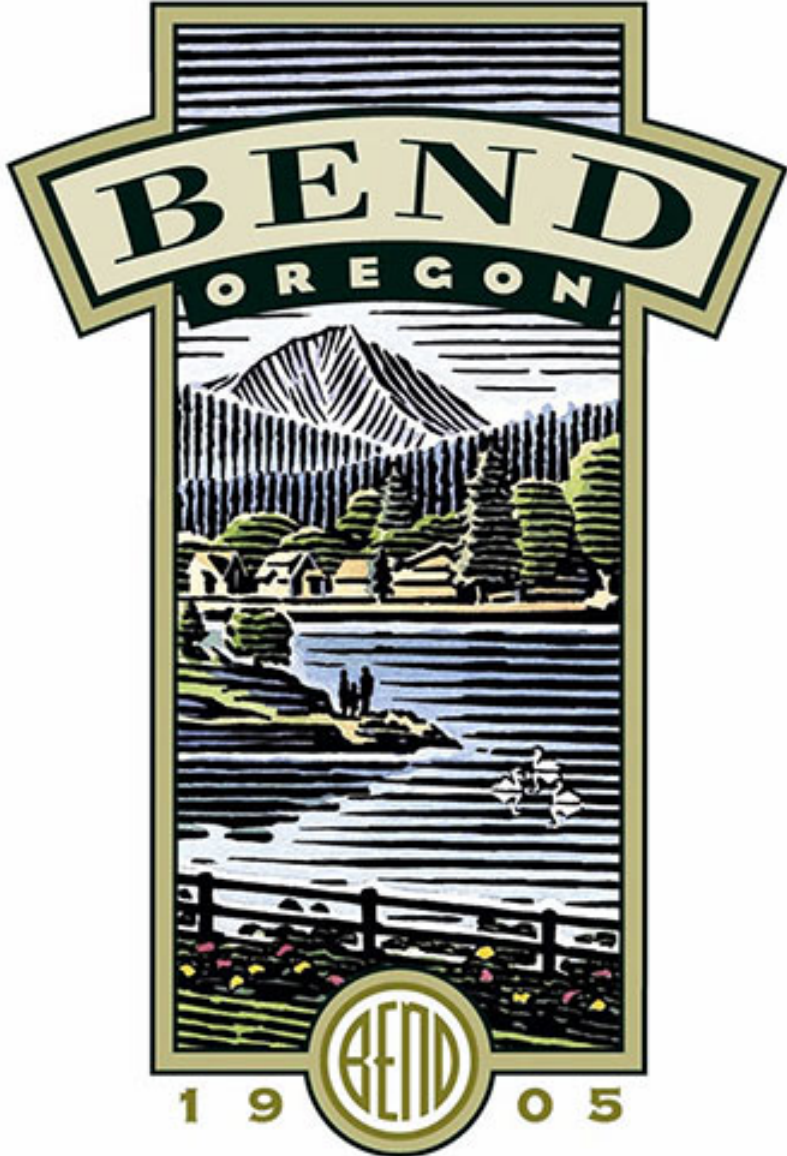
# Recreation Disturbance and Wildlife: Analyzing Impacts and Balancing Values

**Brock McCormick, Wildlife Biologist, Deschutes National Forest, Bend-Fort Rock Ranger District**

**Lauri Turner, Wildlife Biologist, Deschutes National Forest**

**PHOTO: Bend Oregon Recreation Use as Shown by Strava Global Heatmap (Strava Labs)**

You're in the  
wrong bar, pal.



# WILDLIFE IMPACTS



# MAGNITUDE OF USE





# Management Challenges





E.J. Pettinger's

copyrighted 2016

# Mild Abandon



*"Respect bro - but this is a wheelies-only trail"*



# Landscape Considerations

PHOTO: Bend Oregon Recreation Use as Shown by Strava Global Heatmap (Strava Labs)



# Restoration & Disturbance

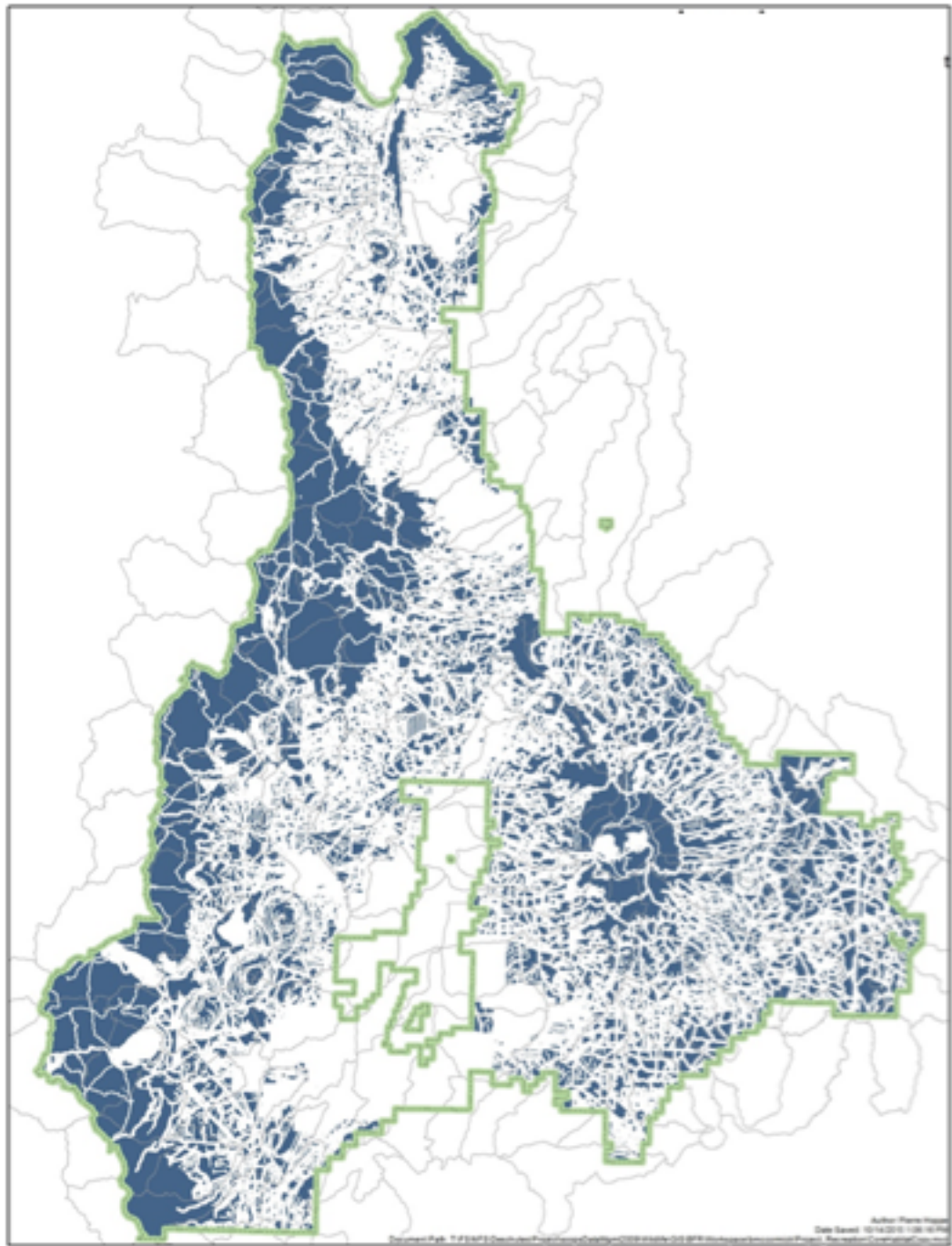
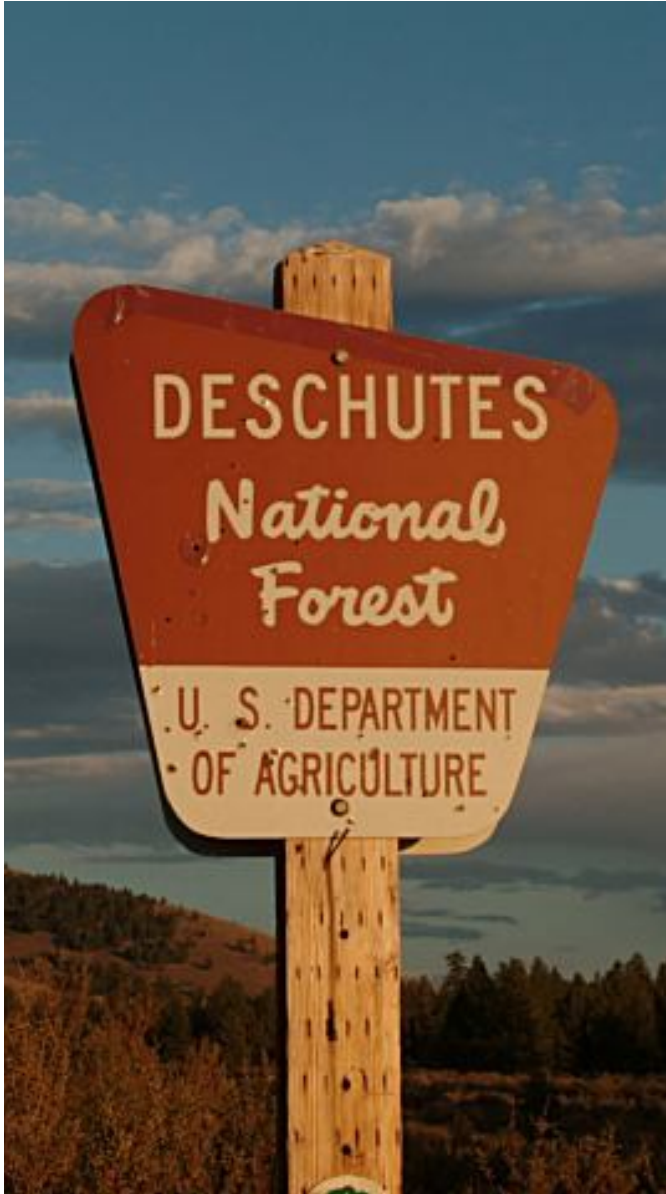
Senard & Todd  
103  
Bend-Ore.



# Restoration & Disturbance

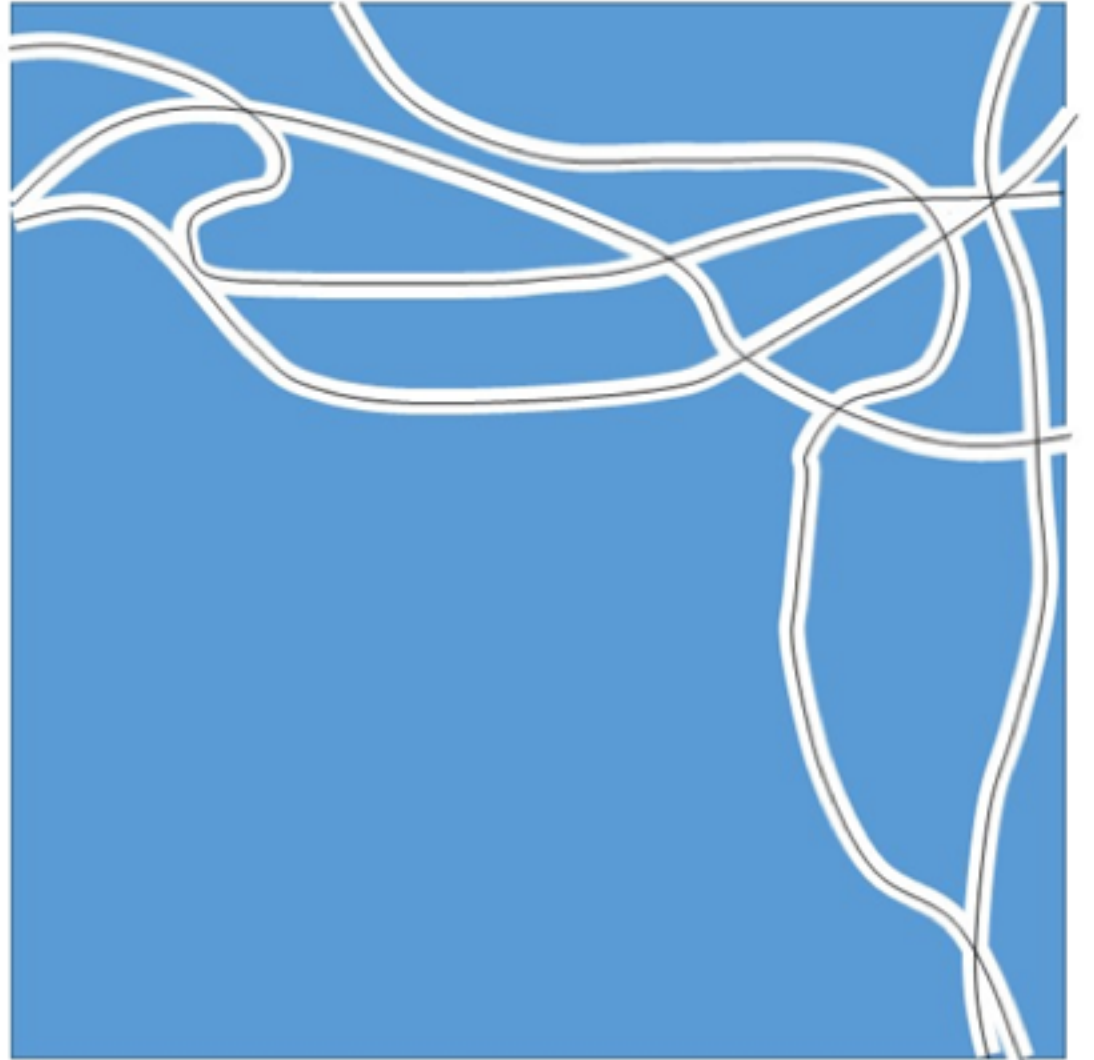
# ADDRESSING IMPACTS & FINDING BALANCE







Approximately  $7\text{mi}/\text{Mi}^2$



Approximately  $7\text{mi}/\text{Mi}^2$

Trails Analysis Process  
Deschutes NF - Ryan Ranch KEA  
-SUNRIVER TRAILS PROPOSAL-

**Legend**

— Roads

⋯ Trails

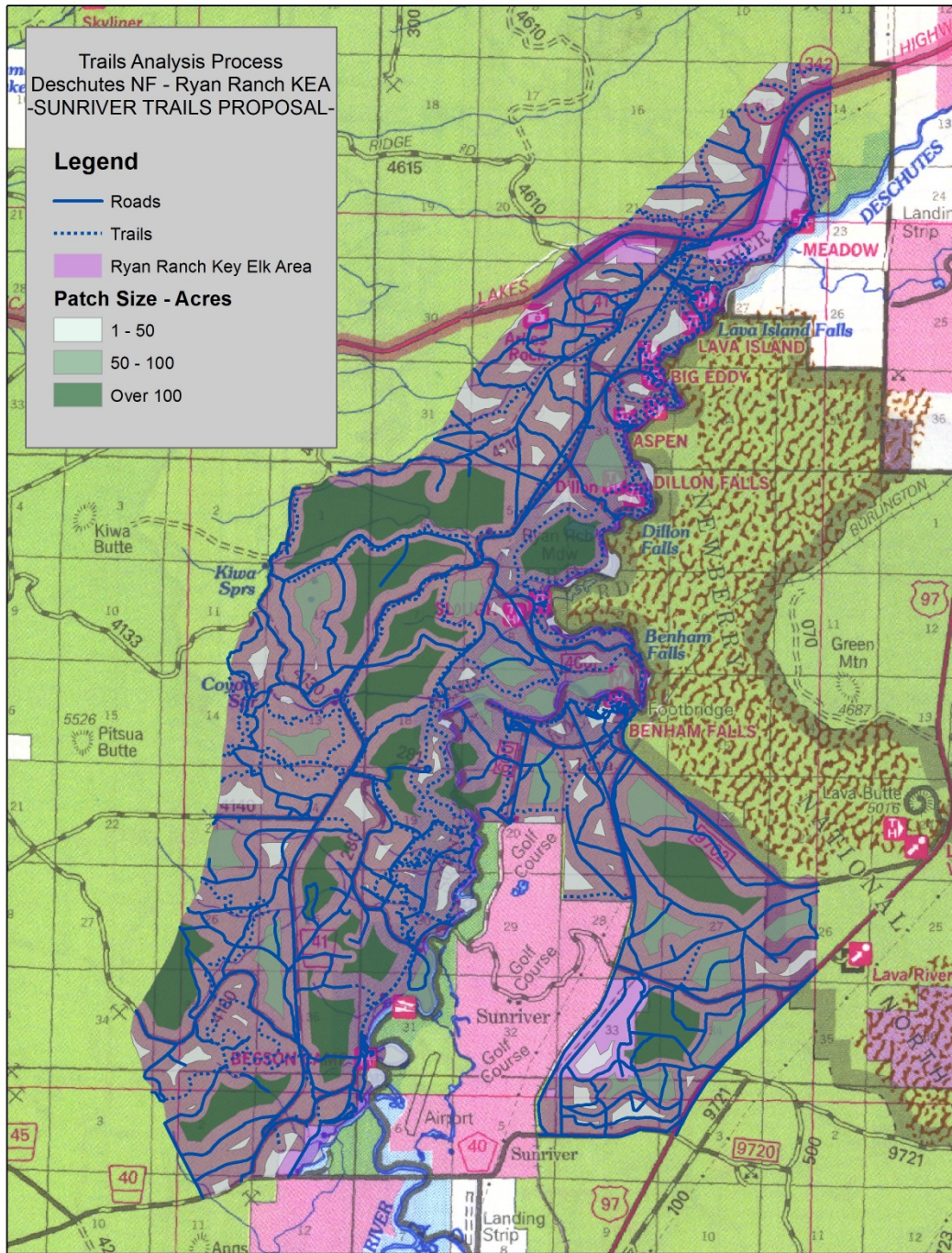
Ryan Ranch Key Elk Area

**Patch Size - Acres**

1 - 50

50 - 100

Over 100



Trails Analysis Process  
Deschutes NF - Ryan Ranch KEA  
-SUNRIVER TRAILS-  
-MODIFIED PROPOSAL-

**Legend**

— Roads

⋯ Trails

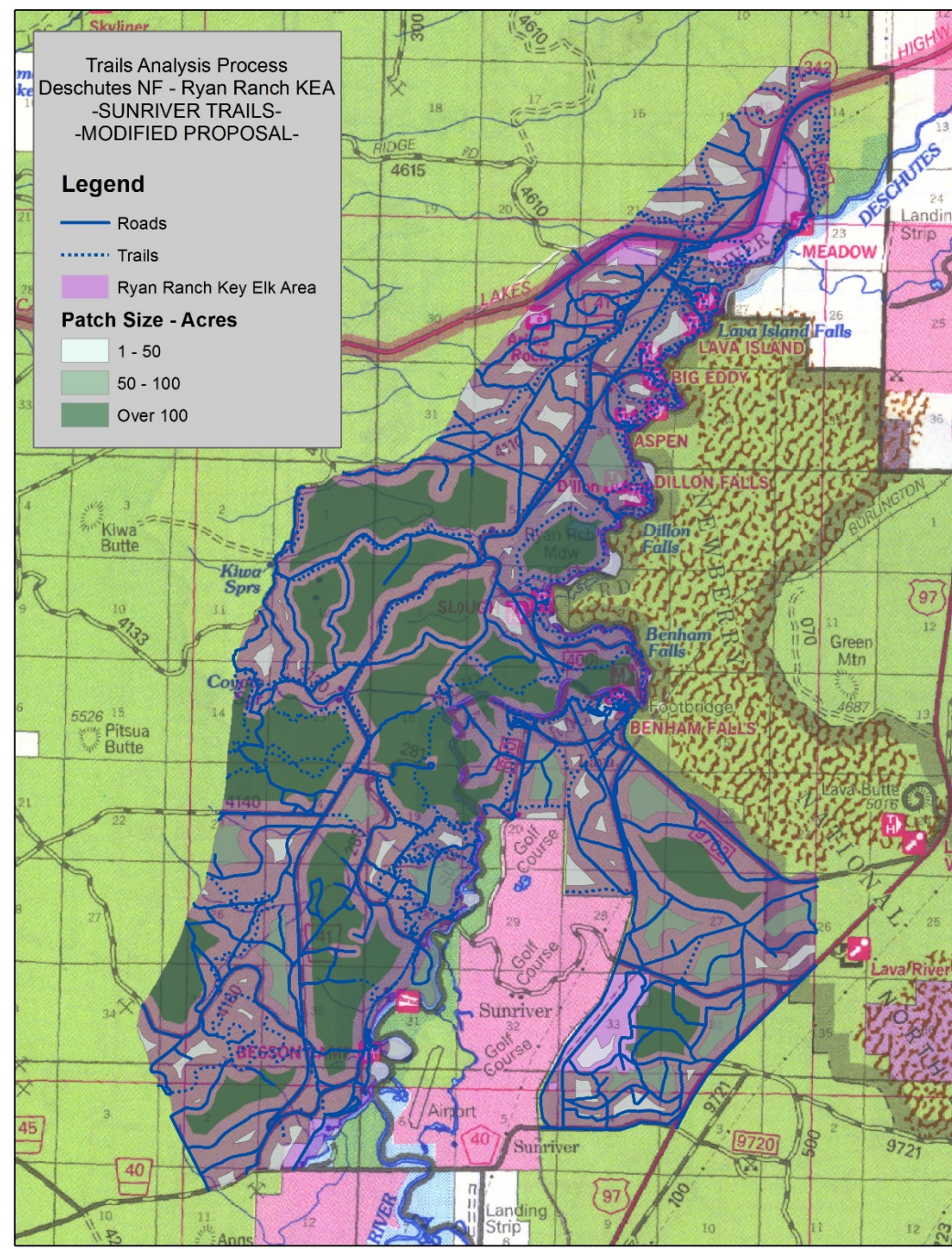
Ryan Ranch Key Elk Area

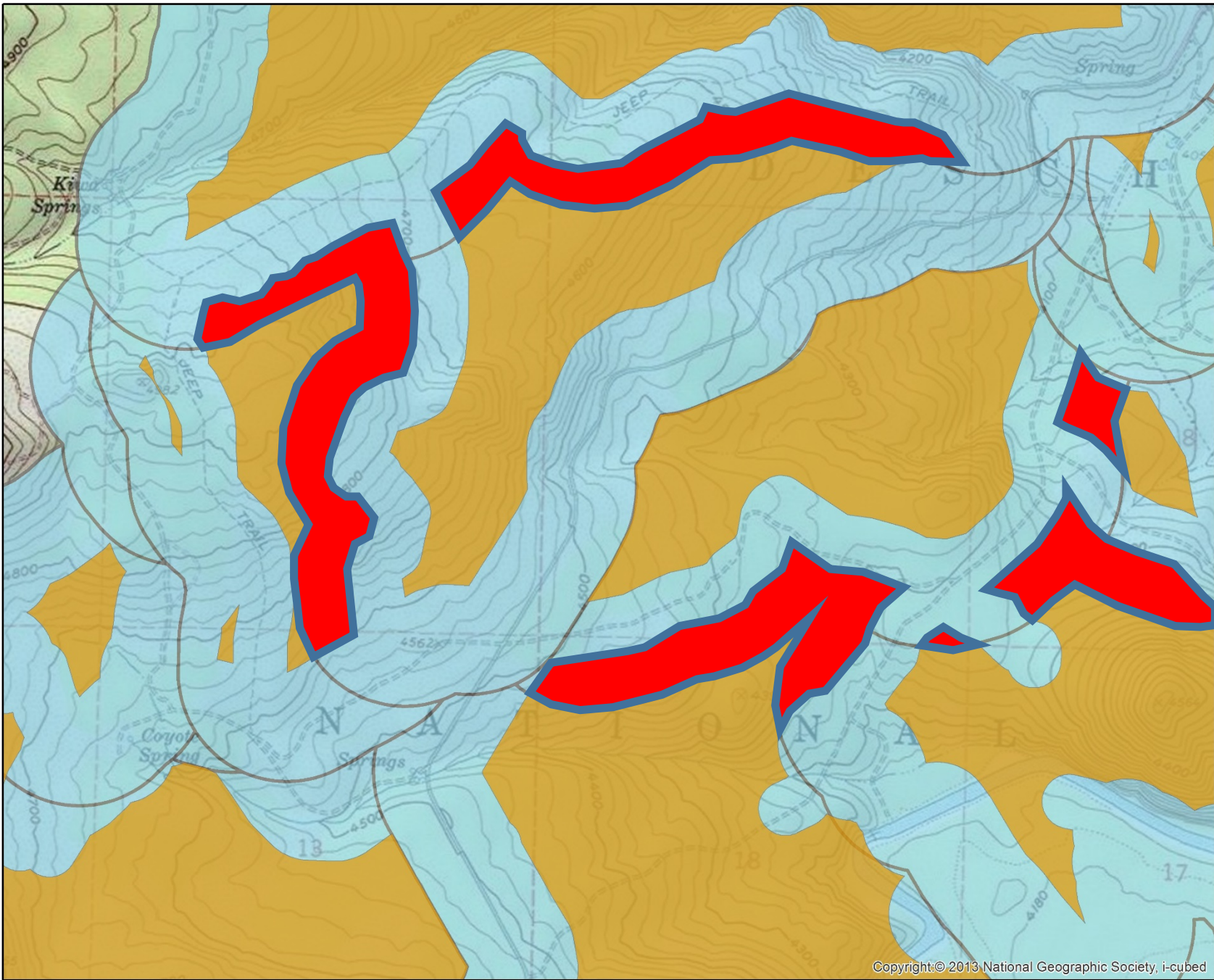
**Patch Size - Acres**

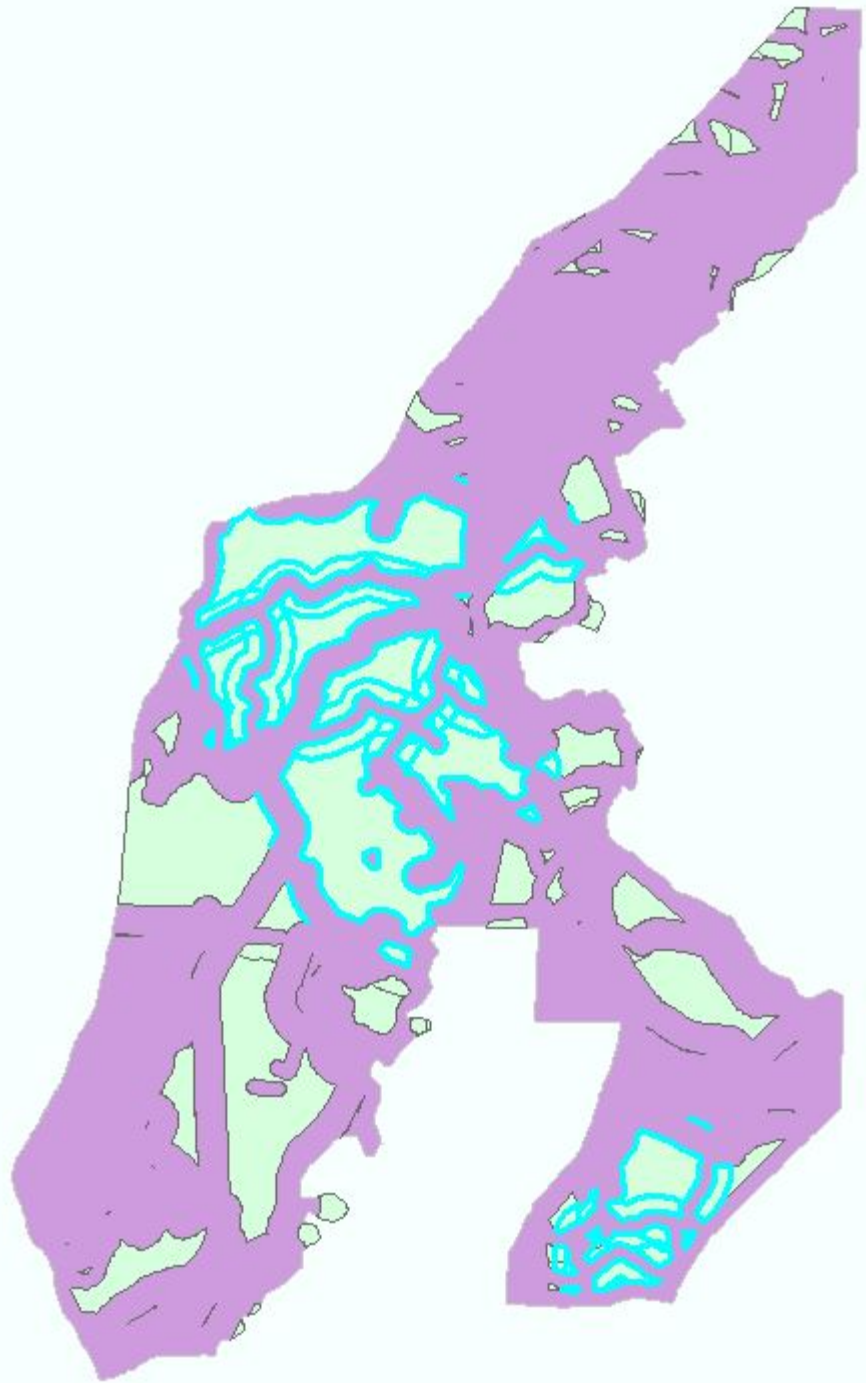
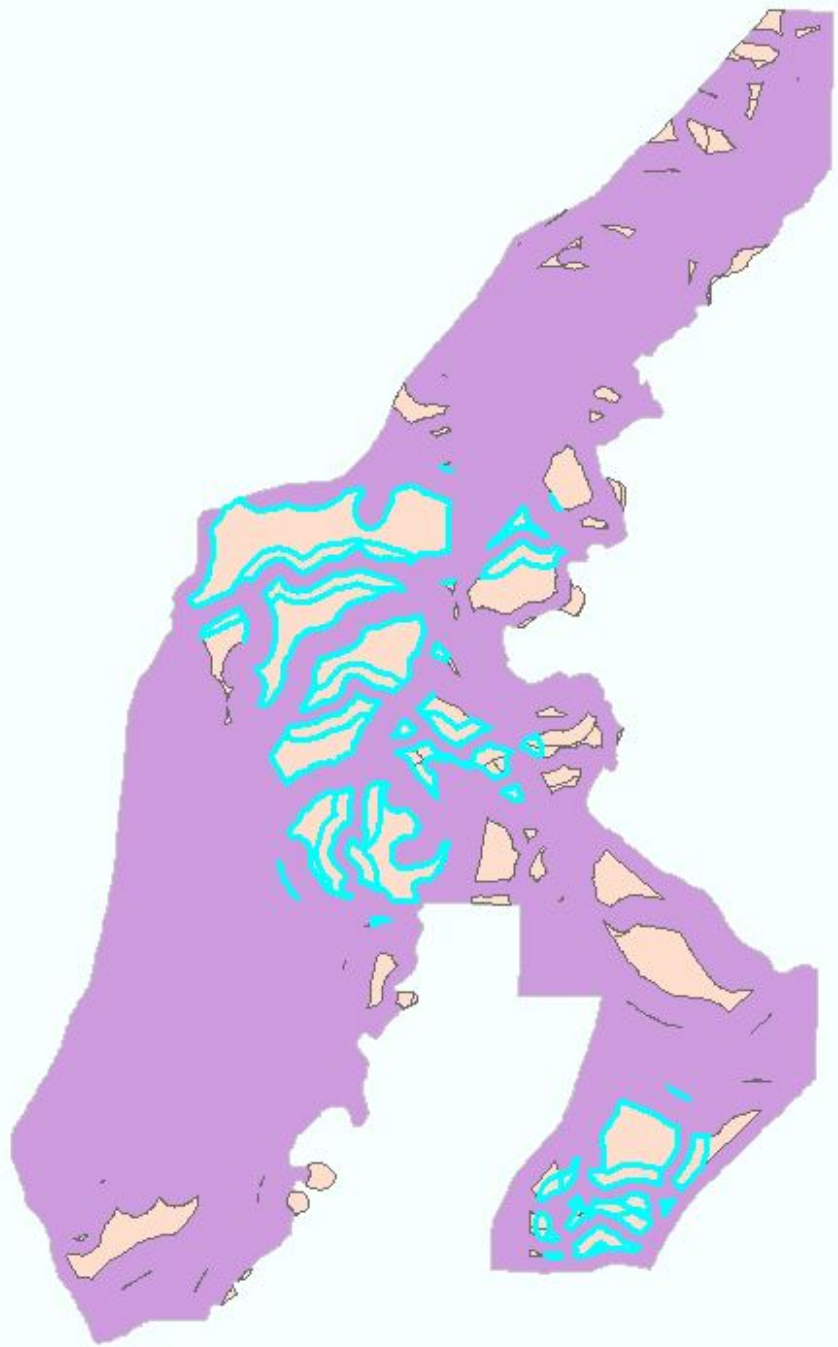
1 - 50

50 - 100

Over 100







# WILDLIFE NEED A RETREAT



## Our Responsible Recreation Benefits the Forest

Wildlife love this place. In summer, deer and elk feed on the abundant brush and grass, building fat stores for the colder months. In winter, they find shelter, food and water here where there is less snow cover than at higher elevations.

People love this place. Our Central Oregon trails are experiencing increased use throughout the year. Please remember you are sharing this area with deer, elk and other wildlife who want to avoid people and dogs. When wildlife are forced to run from you, their chances of survival and producing young are reduced.

**How you can help:**  
To keep your dog safe and to respect the needs of wildlife, please stay on designated trails, respect winter closures and maintain control of your dog. Deer and elk are less stressed if they can predict human and dog encounters and find safe cover.



DISCOVER  
TRAILS FOREVER

