



# for the **GREATEST GOOD**

Recreation and Wildlife

Wilderness Stewardship Performance – Fish and Wildlife  
Element

2018



for the greatest good

# Outline

- Wilderness – How the Landscape is different
- Wilderness Stewardship Performance For Fish and Wildlife



for the greatest good

# Wilderness – How the Landscape is Different



for the greatest good



*"...lands designated for preservation and protection in their natural condition..."* Section 2(a)



for the greatest good



*"...an area where the earth and its community of life are untrammelled by man..."* Section 2(c)



for the greatest good



*"...an area of undeveloped Federal land retaining its primeval character and influence, without permanent improvement or human habitation..."*

**Section 2(c)**



for the greatest good



*"...has outstanding opportunities for solitude or a primitive and unconfined type of recreation..."* Section 2(c)



for the greatest good



*"...shall be devoted to the public purposes of recreation, scenic, scientific, educational, conservation and historic use." Section 4(b)*



for the greatest good

# Wilderness – How the Landscape is Different

Section 2(a) of the Wilderness Act:

“...to secure for the American people of present and future generations the benefits of an enduring resource of wilderness.”

“...these shall be administered for the use and enjoyment of the American people in such manner as will leave them unimpaired for future use as wilderness.”

Agency mandate: preserve and enhance wilderness character



for the greatest good

# Wilderness – How the Landscape is Different

Agency mandate: preserve and enhance wilderness character – Aurthor Carhart Wilderness Training Center

- Natural
- Undeveloped
- Untrammeled
- Opportunities for solitude or primitive and unconfined recreation
- Other features of value: ecological, geological, or other features of scientific, educational, scenic, or historical value



for the greatest good

# Wilderness – How the Landscape is Different

Why is wilderness important to Fish and Wildlife?



for the greatest good

# Wilderness Stewardship Performance



for the greatest good

# Wilderness Stewardship Performance

## WSP Framework

One measure, with ten elements selected from twenty

- Each element worth ten points (total of 100-points)
- Two 2-point items as additional reporting requirements (overall possible total = 104-points)
- “Managed to standard” = 60 points & higher



for the greatest good

Category	Element Title	Selection*
Natural Quality of Wilderness Character	Invasive Species	Select 1-3
	Air Quality Values	
	Natural Role of Fire	
	Water	
	Fish & Wildlife	
	Plants	
Undeveloped Quality of Wilderness Character	Recreation Sites	Select 1-2
	Trails	
	Non-Compliant Infrastructure	
	Motorized Equipment / Mechanical Transport Use Authorizations	
Untrammeled Quality of Wilderness Character	Agency Management Actions	Must Select
Solitude Quality of Wilderness Character	Opportunities for Solitude	Select 1-2
	Opportunities for Primitive and Unconfined Recreation	
Other Features of Value Quality of Wilderness Character	Cultural Resources	Select 0-1
Special Provisions	Livestock Grazing	Select 0-2
	Outfitters & Guides	
	Other Special Provisions (e.g., dams, airstrips, mines)	
Administration	Workforce Capacity	Must Select
	Education	Must Select
	Wilderness Character Baseline	Must Select

\* Note: a total of 10 elements must be selected plus two additional reporting checkboxes (boundary maps and upward reporting)



for the greatest good

# Wilderness Stewardship Performance

## Natural Element- Fish & Wildlife

Description: The need to conserve and/or recover populations of indigenous fish and/or wildlife species in this wilderness has been evaluated and management actions taken, as necessary, in coordination with the state fish and wildlife agency and U.S. Fish and Wildlife Service, as appropriate.



for the greatest good

Score	Description	Deliverables / Outcomes	Recommended NRM Documentation
2 points <sup>1</sup>	An indigenous fish and/or wildlife management strategy has been established for this wilderness, in coordination with the state fish and wildlife agency and U.S. Fish and Wildlife Service/National Marine Fisheries Service, as appropriate.	<ul style="list-style-type: none"> <li>Strategy is in place and signed by appropriate line officer, and has been reviewed and (if needed) updated within the past year.</li> </ul>	<ul style="list-style-type: none"> <li>Title of indigenous fish and/or wildlife management strategy and signature date (MM/YYYY)</li> </ul>
4 points <sup>2</sup>	Management actions to conserve and/or recover at least one terrestrial and one aquatic priority indigenous species in this wilderness have been implemented.	<ul style="list-style-type: none"> <li>Management action map in GIS with narrative</li> </ul>	<ul style="list-style-type: none"> <li>Name of indigenous species</li> <li>Description of implemented management actions (brief)</li> <li>Date of management action map (MM/YYYY)</li> </ul>
6 points <sup>3</sup>	Management actions for at least one terrestrial and one aquatic priority indigenous species in this wilderness have been monitored and evaluated for effectiveness.	<ul style="list-style-type: none"> <li>Narrative detailing priority actions</li> <li>Project file contains documentation of action effectiveness</li> </ul>	<ul style="list-style-type: none"> <li>Description of management action evaluated for effectiveness (brief) and date of evaluation (MM/YYYY)</li> </ul>
8 points <sup>4</sup>	All management actions identified in the strategy and determined to be the minimum necessary for the administration of the area as wilderness have been taken and evaluated, with changes to these actions implemented as needed.	<ul style="list-style-type: none"> <li>Narrative detailing management actions</li> <li>Changes listed in strategy appendices</li> </ul>	<ul style="list-style-type: none"> <li>Description of management actions evaluated (brief) and date of last evaluation (MM/YYYY)</li> </ul>
2 point checkbox	The Forest Service has a current, signed Wilderness Memorandum of Understanding (MOU) with the state fish and wildlife agency, tribes, or applicable federal agencies (as appropriate) and/or a coordination meeting has been held with representatives from that agency/those agencies this fiscal year to discuss issues specific to fish and/or wildlife management in this wilderness.	<ul style="list-style-type: none"> <li>Current MOU on file and/or meeting notes from yearly meeting are available in corporate database</li> </ul>	<ul style="list-style-type: none"> <li>Title, signature date, and expiration date of MOU (MM/YYYY)</li> </ul>



for the greatest good

# Partnership for Wildlife and Recreation Management Deschutes and Willamette National Forest

Tyson Cross, Wilderness Manager, McKenzie River Ranger  
District

Ruby Seitz, Wildlife Biologist, McKenzie River Ranger  
District



for the greatest good

# Seven Wilderness Areas on the Willamette/Deschutes have Fish and Wildlife as an optional element of Wilderness Stewardship Performance:

Mt. Jefferson

Mt. Washington

Three Sisters

Middle Santiam

Menagerie

Waldo Lake

Diamond Peak



for the greatest good

Three of the  
Seven  
Wilderness Areas  
were selected for  
the FY2017 Fish  
and Wildlife  
Strategy:

Mt. Jefferson  
Mt. Washington

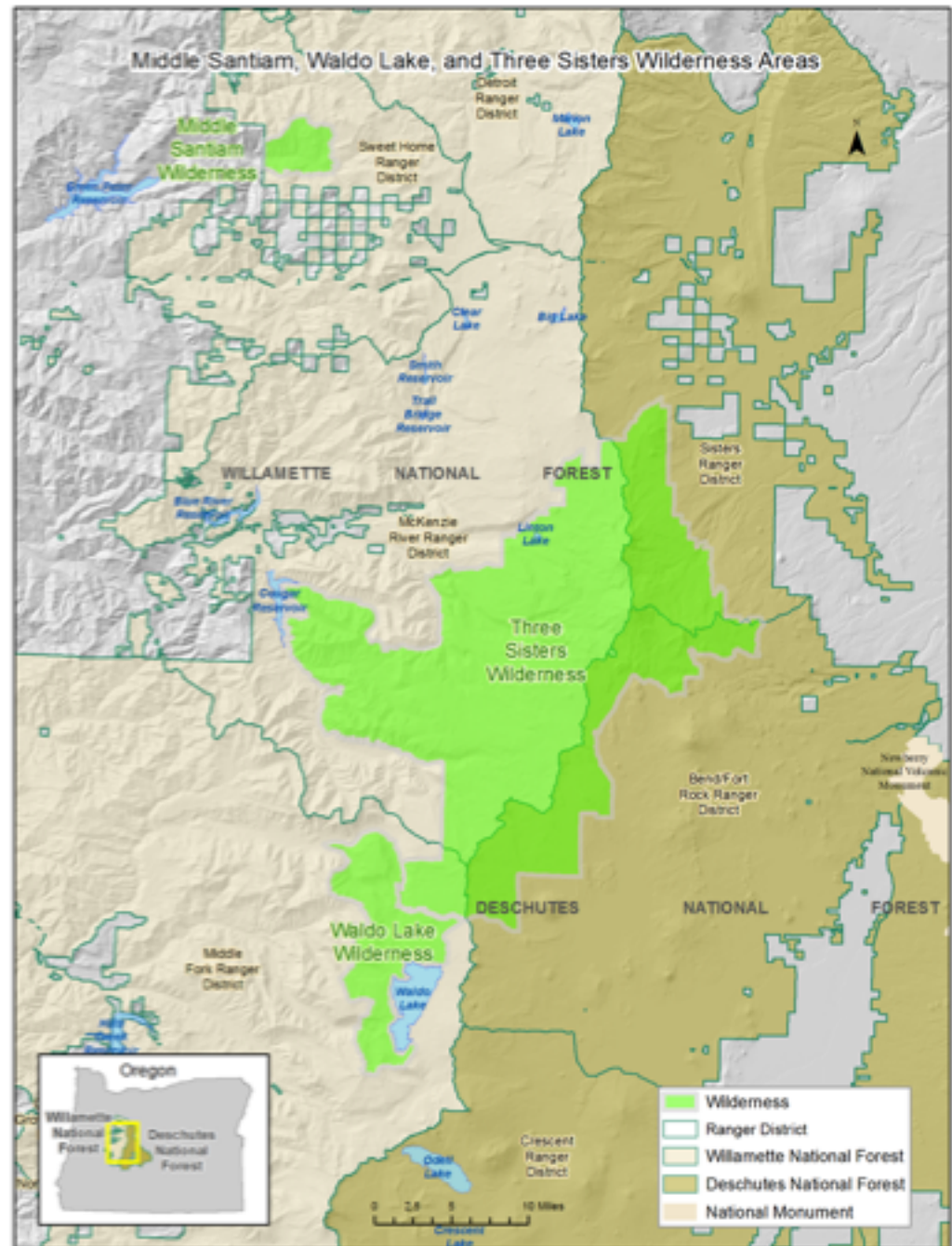
Three Sisters (283,762  
acres)

Middle Santiam (8,846  
acres)

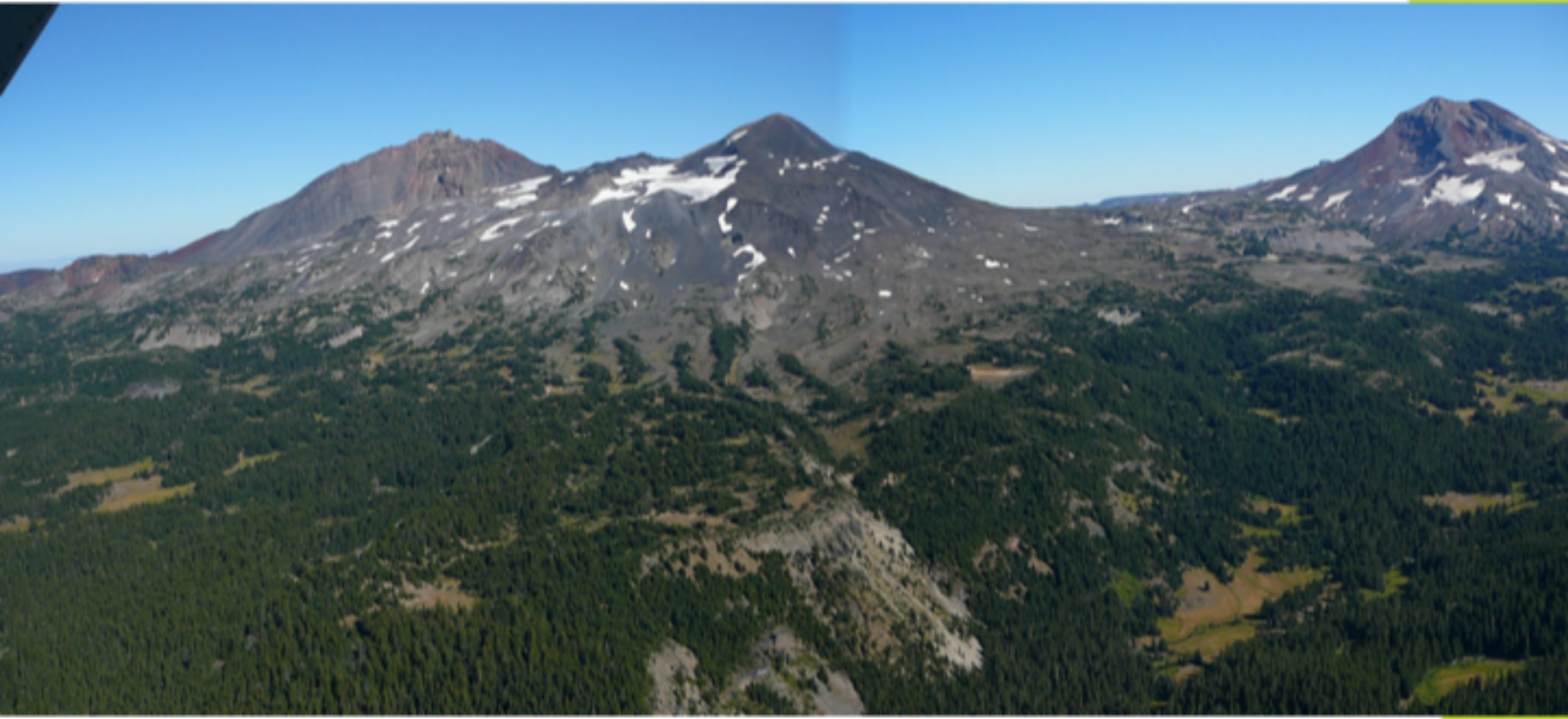
Menagerie

Waldo Lake (36,868  
acres)

Diamond Peak



# Diversity of Habitat Types and Species



# Previous Wilderness Accomplishments

- Development of a no fire retardant and no DIP zone for lakes with Oregon spotted frog presence
- Trail rerouting to protect Oregon spotted frog habitat, and support to monitor populations and survey habitat.
- Support of contracts to monitor Oregon spotted frog populations
- Spring helicopter surveys to survey for wolverine tracks, followed up with ground efforts.
- Assisted ODFW with carnivore survey project in 2011/2012
- Camera stations to detect presence of rare carnivores (1990s to 2010, very scattered)
- Wilderness Bioblitz surveys on Willamette started in 2014 and take place each July to survey for sensitive species. Include at least one volunteer.



# Timing is Everything

2015: New species added to the  
Region 6 Strategic Species List:

Western Bumble Bee

Sierra Nevada Red Fox

Northern Waterthrush



# Timing is Everything

2015 list: Other species of interest

Oregon spotted frog

Native trout

Northern spotted owl

American peregrine falcon

Gray wolf

Non-listed: Cascades frog

Mountain Goat



for the greatest good



# Indigenous Fish and Wildlife Management Strategy

## Gila and Aldo Leopold Wildernesses

### Gila National Forest

October 2016



#### Photo Credits

U.S. Fish and Wildlife Service: Horseback riders packing Gila trout in to South Diamond Creek after the 2013 Silver Fire, narrow-headed garter snake, Chiricahua leopard frog, Mexican spotted owl, Gila trout  
U.S. Forest Service: Hot spring soakers.

#### Contributors

This document benefited from the authorship, reviews, and participation of the following individuals (listed alphabetically): Anne Casey (U.S. Forest Service), Michelle Christman (U.S. Fish and Wildlife Service), Andrew Dean (U.S. Fish and Wildlife Service), Katey Driscoll (U.S. Forest Service), Brian Dykstra (U.S. Forest Service), Eric Flood (U.S. Forest Service), Bjorn Fredrickson (U.S. Forest Service), Nat Gillespie (U.S. Forest Service), Nicholas Glidden (U.S. Forest Service), Amy Hartell (U.S. Forest Service), Steve Hattenbach (U.S. Forest Service), Rachelle Huddleston-Lorton (U.S. Forest Service), Karl Malcolm (U.S. Forest Service), Adam Mendonca (U.S. Forest Service), Jerry Monzingo (U.S. Forest Service), Dustin Myers (U.S. Forest Service), Christa Osborn (U.S. Forest Service), Yvette Paroz (U.S. Forest Service), Dan Shively (U.S. Forest Service), Sandy Skrien (U.S. Forest Service), Annette Smits (U.S. Forest Service), Diane Taliaferro (U.S. Forest Service), Art Telles (U.S. Forest Service), and Jill Wick (New Mexico Department of Game and Fish).



for the greatest good

# 2017 Process

Determination of involvement on both forests,  
Tribes, ODFW, USFWS, Xerces Society

Spring workshop attended by 24 individuals:

ODFW fish and wildlife biologists from west and  
east sides

USFS fish and wildlife biologists, wilderness and  
fire managers

USFWS fish and wildlife biologists



for the greatest good

# 2017 Workshop Goals

Discuss characteristics, species presence, habitat and fire history of each wilderness area



for the greatest good

# 2017 Workshop Outcome

Identify List of Priority **Indigenous** Species – perceived management need.

- Indigenous = Those wildlife and fish species that historically occurred within a wilderness area without human assistance.
- Goals: Improve status if persistence in wilderness is threatened
- Or reintroduce indigenous species to previously occupied range within wilderness.



# Priority Indigenous Species

- Species listed TES or proposed
- Species identified by State of Oregon as conservation or mgt priorities
- Species being actively managed (not harvested)
- Partner resources available to support species objectives
- Species with core historic or current range that fall largely or entirely in wilderness
- Indigenous species of particular interest to local managers



**Table 1. Priority Indigenous Species Presence by Wilderness Area for the Willamette and Deschutes National Forests.**

Species/Wilderness Area	Species Status	Middle Santiam	Three Sisters	Waldo Lake
FISH				
Cutthroat Trout	None	x	x	
Rainbow Trout	None	x		
MAMMALS				
Pacific Fisher	R6 Sensitive	x	x	x
Sierra Nevada Red Fox	R6 Sensitive		x	x
Mountain Goat	Reintroduced		x	
Gray Wolf	Federally endangered	x	x	x
American Beaver	Protected Furbearer	x	x	x
BIRDS				
Peregrine Falcon	R6 Sensitive	x	x	
Northern Spotted Owl	Federally threatened	x	x	x
Northern <u>Waterthrush</u>	R6 Sensitive	Unlikely presence	x	x
Black-backed Woodpecker	Northwest Forest Plan Species of Concern		x	x
Dusky Grouse	High public interest		x	x
AMPHIBIANS				
Oregon Spotted Frog	Federally threatened	x	x	x
Cascades Frog	Oregon State Species of Concern	x	x	x
INVERTEBRATES				
Western Bumble Bee	R6 Sensitive	x	x	x
<u>Suckley</u> Bumble Bee	Proposed R6 Sensitive	x	x	x



for the greatest good

# Species that did not meet criteria

**Considered but not selected at June 2017 meeting**

**Selected at June 2017 meeting but later determined not to meet criteria**

Wolverine	Mule Deer
Bufflehead	Sooty Grouse
Lewis' Woodpecker	Clark's Nutcracker
Harlequin Duck	Tailed Frog
Mardon Skipper	Salamanders (east-side only)
Gray-Blue Butterfly	



for the greatest good

# 2017 Workshop

- Individuals were assigned tasks to develop Wilderness Management Strategy for species they have experience with, coordinate with others.
- Discussed the wilderness lakes fish stocking, how we may want to develop scientific, wilderness-sensitive surveys to determine actual use by the public.
- Discussed 2018 grant to complete strategy for remaining 4 wilderness areas.
- Meeting with Forest Supervisors to inform them about our process, discuss priorities with them, they signed final document by Sept. 30, 2017.





## Indigenous Fish and Wildlife Management Strategy



Middle Santiam, Three Sisters, and Waldo Lake Wilderness  
Deschutes and Willamette National Forests

September 2017



for the greatest good

Table 2. Summary of Short Term (next five years) highest priority actions by species

Species/Species Group	Short Term Recommended Actions
Native Trout	Develop and implement monitoring plan for angling use, prioritize lake stocking efforts based on recreational angling use. Continue working with ODFW to reduce stocking of non-indigenous species. Evaluate stocking needs in Oregon Spotted Frog habitat.
Pacific Fisher	Inventory potential future release blocks in Three Sisters and Middle Santiam Wilderness. Work with partners on any fisher release proposals. Conduct general carnivore inventories in all three wilderness areas.
Sierra Nevada Red Fox	Work with partners to continue inventory and monitoring efforts. Study interactions with humans. Allow natural fire to prevail where and when possible.
Mountain Goat	Monitor reintroduced population. Work with partners on any mountain goat reestablishment proposals. Monitor interactions between goats and humans.
Gray Wolf	Monitor population, develop and consider fire management plans, and prey species habitat.
American Beaver	Work with partners to survey current distribution and map potential habitat. Work with ODFW to relocate problem beavers to appropriate habitat. Work with ODFW to restrict trapping in Oregon spotted frog potential or occupied habitat if needed. Encourage use of prescribed fire in the wilderness to mitigation fire suppression effects.
Peregrine Falcon	Map and survey potential nest sites, survey historic detection sites, assess threats to breeding sites. Work with partners to coordinate survey efforts. Recognize benefits of allowing fire to burn.
Northern Spotted Owl	Recognize benefits of allowing fire to burn to prevent larger, stand-replacing fires. Map out highest quality habitat and assess surrounding fire risks. Revisit historic wilderness sites and survey potential areas with suitable habitat.
Northern <u>Waterthrush</u>	Map and survey suitable habitat, survey historic detection sites, and assess threats to breeding sites.
Oregon Spotted Frog	Monitor populations and threats in the Three Sisters Wilderness. Conduct Coldwater Fish Assessment. Allow natural fire to prevail. Inventory for new populations.
Cascades Frog	Monitor populations and threats in the Three Sisters Wilderness. Conduct Coldwater Fish Assessment. Inventory for new populations.
Western and <u>Suckley</u> Bumble Bee	Work with partners to continue species inventory. Establish protocol for population monitoring. Allow natural fire to prevail. Conduct a bumble bee threat assessment. Support invasive plant species surveys and control as needed.



# 2017 Strategy Outcomes

- Documentation to support our goals
- Sets some priorities
- Native Trout: Monitoring plan for angling use
- Allowing fire to prevail in the wilderness: Sierra Nevada Red Fox, Gray Wolf, Peregrine Falcon, Northern Spotted Owl, Oregon Spotted Frog, Western and Suckley Bumble Bee
- Encouraged communications (internal/external)
- May establish solid, ongoing efforts for wilderness component for our work
- Built/maintained enthusiasm



# Oregon Spotted Frog

- Monitor populations and threats
- Inventory for new populations
- Monitor for American Beaver presence and work with ODFW to restrict trapping in potential or occupied habitat if needed.
- Encourage use of prescribed fire to mitigate fire suppression efforts.



for the greatest good

# Western Bumble Bee

# Suckley's Bumble Bee

- Work with partners to continue species inventory.
- Establish protocol for population monitoring.
- Allow natural fire to prevail.
- Conduct a bumble bee threat assessment.
- Support invasive plant species surveys and control as needed.



for the greatest good

# Mountain Goat



- Monitor reintroduced population
- Monitor interactions between goats and humans. populations

# Gray Wolf

- Monitor population
- Develop and consider fire management plans and prey species habitat.



# Northern Spotted Owl

- Recognize benefits of allowing fire to burn to prevent larger, stand-replacing fires.
- Map highest quality habitat and assess surrounding fire risks.
- Revisit historic wilderness sites to determine occupancy.



for the greatest good

# What is next?

- 2018 grant was received to develop strategy for remaining four wilderness areas.
- Interagency meeting in April
- New biologists and wilderness managers with responsibility for additional wilderness areas (Mt. Jefferson, Diamond Peak)
- Did not qualify to apply for 2019 grant due to point scoring methods beyond strategy development
- + process successful to encourage strategy
- - not a mechanism to fund all future work in the wilderness



# Wilderness Stewardship Performance Guidebook

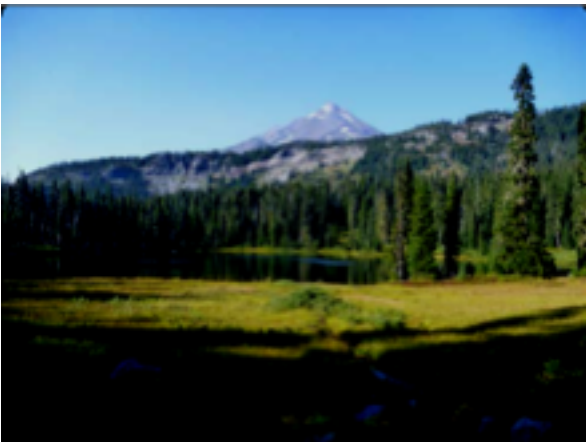
2017

## Scoring and Deliverables:

Score	Description	Deliverables / Outcomes	Recommended NRM Documentation
2 points <sup>1</sup>	An indigenous fish and/or wildlife management strategy has been established for this wilderness, in coordination with the state fish and wildlife agency and U.S. Fish and Wildlife Service/National Marine Fisheries Service, as appropriate.	<ul style="list-style-type: none"> <li>Strategy is in place and signed by appropriate line officer, and has been reviewed and (if needed) updated within the past year.</li> </ul>	<ul style="list-style-type: none"> <li>Title of indigenous fish and/or wildlife management strategy and signature date (MM/YYYY)</li> </ul>
4 points <sup>2</sup>	Management actions to conserve and/or recover at least one terrestrial and one aquatic priority indigenous species in this wilderness have been implemented.	<ul style="list-style-type: none"> <li>Management action map in GIS with narrative</li> </ul>	<ul style="list-style-type: none"> <li>Name of indigenous species</li> <li>Description of implemented management actions (brief)</li> <li>Date of management action map (MM/YYYY)</li> </ul>
6 points <sup>3</sup>	Management actions for at least one terrestrial and one aquatic priority indigenous species in this wilderness have been monitored and evaluated for effectiveness.	<ul style="list-style-type: none"> <li>Narrative detailing priority actions</li> <li>Project file contains documentation of action effectiveness</li> </ul>	<ul style="list-style-type: none"> <li>Description of management action evaluated for effectiveness (brief) and date of evaluation (MM/YYYY)</li> </ul>
8 points <sup>4</sup>	All management actions identified in the strategy and determined to be the minimum necessary for the administration of the area as wilderness have been taken and evaluated, with changes to these actions implemented as needed.	<ul style="list-style-type: none"> <li>Narrative detailing management actions</li> <li>Changes listed in strategy appendices</li> </ul>	<ul style="list-style-type: none"> <li>Description of management actions evaluated (brief) and date of last evaluation (MM/YYYY)</li> </ul>

# What is next?

- Continue communications
- Consider wilderness management a key part of our priority work
- Annual bioblitzes, include other resource areas and managers to increase understanding and support
- Use of Citizen Science to educate and involve the public
- Good options to build and improve partnerships



## **Wilderness Stewardship Sharepoint Site:**

<https://ems-team.usda.gov/sites/fs-nfs-wsp/SitePages/Wilderness%20Stewardship%20Performance.aspx>



for the greatest good



# Wilderness Stewardship Performance

[Home](#) [Support Resources](#) [WSP Funding Programs](#) [Communication Materials](#) [Accomplishment Reports](#)  
[Other Wilderness Sites](#)

Search this site

## Wilderness Stewardship Performance

Welcome to the site dedicated to the Wilderness program's performance measure: Wilderness Stewardship Performance. We hope you are able to find what you came here looking for, but if not, please send us a message at [FS-Wilderness Stewardship Performance Mailbox](#)



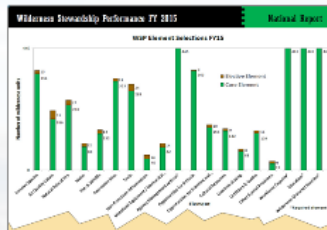
Support Resources



WSP Funding Programs



Communication Materials



Accomplishment Reports



Other Wilderness Sites

### FY 2018-2019 Major Steps and Timing

Time Frame	Steps/Actions
Nov. 1, 2017	Accomplishment report due for units receiving FY 2017 WSP internal funding

### General WSP Documents

✓	Name	Modified	Modified By
	Chief's Letter 11.25.2014	September 13, 2016	Boutcher, Steven R -FS
	FY 2016 RHVR and WWSR Upward	September 13, 2016	Boutcher, Steven R -FS



for the greatest good



for the greatest good



for the greatest good



for the greatest good



for the greatest good



for the greatest good



for the greatest good



for the greatest good



for the greatest good