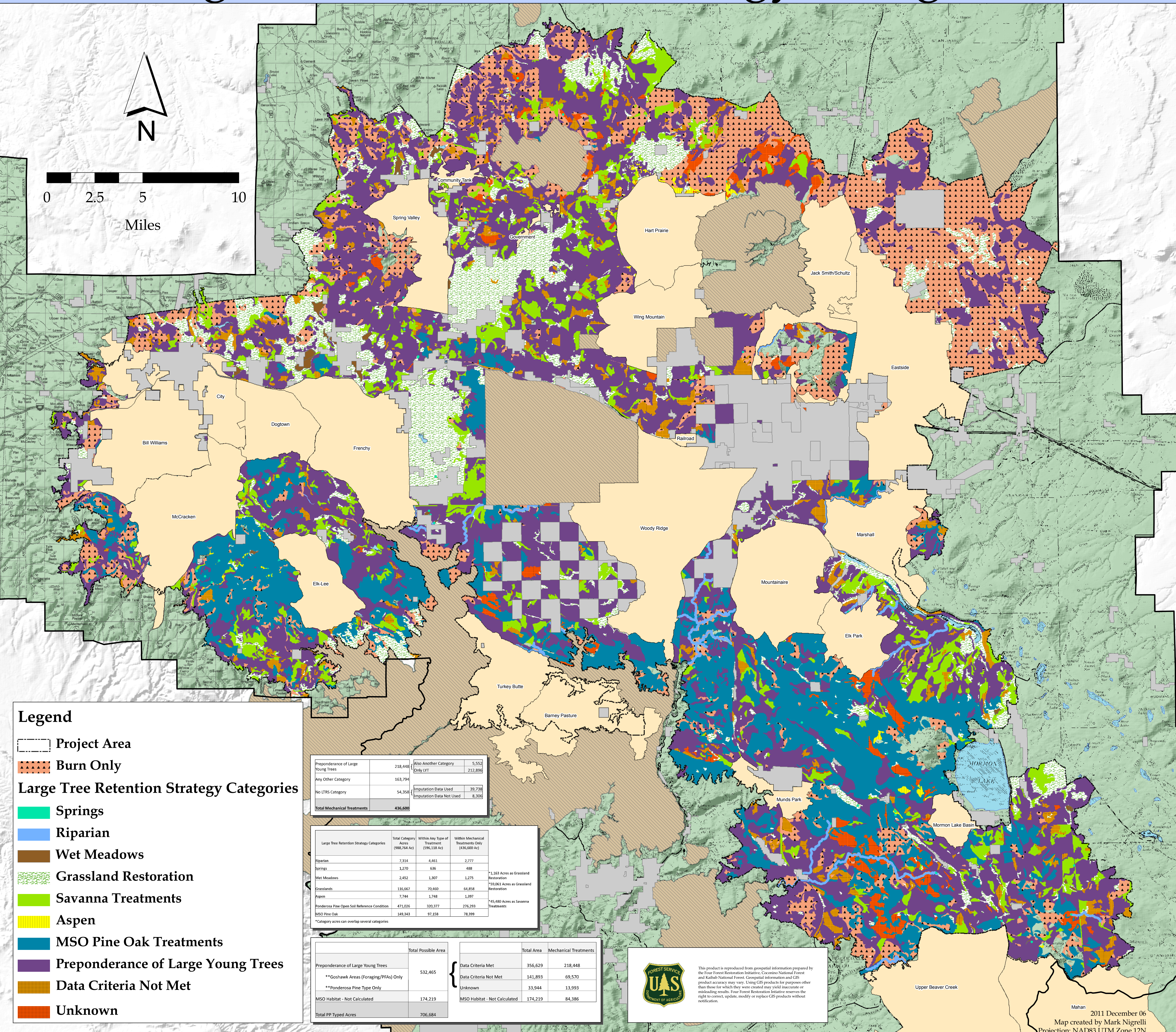


Four Forest Restoration Initiative Large Tree Retention Strategy Categories



Legend

- Project Area
- Burn Only

Large Tree Retention Strategy Categories


- Springs
- Riparian
- Wet Meadows
- Grassland Restoration
- Savanna Treatments
- Aspen
- MSO Pine Oak Treatments
- Preponderance of Large Young Trees
- Data Criteria Not Met
- Unknown

Preponderance of Large Young Trees	218,448	Also Another Category Only LVT	5,552
Any Other Category	163,794		212,890
No LTRS Category	54,358	Imputation Data Used	39,738
		Imputation Data Not Used	8,306
Total Mechanical Treatments	436,600		

Large Tree Retention Strategy Categories	Total Category Acres (988,764 Ac)	Within Any Type of Treatment (596,138 Ac)	Within Mechanical Treatments Only (436,600 Ac)
Riparian	7,314	4,461	2,777
Springs	1,270	636	488
Wet Meadows	2,452	1,307	1,275
Grasslands	116,667	70,460	64,958
Aspen	7,244	1,748	1,397
Ponderosa Pine Open Soil Reference Condition	471,026	320,377	276,293
MSO Pine Oak	149,343	97,158	78,399

*Category acres can overlap several categories

	Total Possible Area	Data Criteria Met	Total Area	Mechanical Treatments
Preponderance of Large Young Trees			356,629	218,448
**Goshawk Areas (Foraging/PFAs) Only	532,465	Data Criteria Not Met	141,893	69,570
**Ponderosa Pine Type Only		Unknown	33,944	13,993
MSO Habitat - Not Calculated	174,219	MSO Habitat - Not Calculated	174,219	84,386
Total PP Typed Acres	706,684			



This product is reproduced from geospatial information prepared by the Four Forest Restoration Initiative, Coconino National Forest and Kaibab National Forest. Geospatial information and GIS product accuracy may vary. Using GIS products for purposes other than those for which they were created may yield inaccurate or misleading results. Four Forest Restoration Initiative reserves the right to correct, update, modify or replace GIS products without notification.