

Unit Highlights

Visitors to this Ranger District can enjoy a wide variety of recreation opportunities. Picnicking, camping, hiking and biking, boating, and fishing are a few of the activities available at the Caney Lakes Recreation Area and the Corney Lake Recreation Area.

Surrounding Areas

A forest area restored from sugar cane and cotton fields, the Caney Lakes Recreation Area offers easily accessed shoreline that provides a scenic setting for a wide variety of recreation opportunities including a separate group use area and picnic shelter, water skiing, and hiking and biking on the Sugar Cane National Recreation Trail.

The Sugar Cane Trail has been designated a National Recreation Trail due to its outstanding scenic values, views of the lake, and challenging terrain.

At Corney Lake Recreation Area, the beautiful 2,300 acre lake offers scenery of bald cypress, tupelo gum bottomlands, and breezy upland pines.

For More Information

Caney Ranger District  
3288 Highway 79  
Homer, Louisiana 71040-3951  
Phone: (318) 927-2061  
Fax: (318) 927-6520  
www.fs.usda.gov/r08/kisatchie  
OHV Hotline: (318) 473-7069  
Hours: 7:30 a.m. - 4:00 p.m. M-F

Caney Ranger District  
Kisatchie National Forest



Caney Lakes



Forest Service  
U.S. DEPARTMENT OF AGRICULTURE

Recreational Information

General

This District encompasses over 32,000 acres and is divided into three subunits:

- Caney Lakes Unit—North of Minden, LA
- Middle Fork Unit—Northeast of Homer, LA
- Corney Lake Unit—just outside of Summerfield, LA.

Developed Recreation

The District administers two developed recreation complexes; Caney Lakes Recreation Area and Corney Lake Recreation Area. Caney Lakes is a designated fee area. User fees are as follows:

Day Use Fees:  
\$5.00/vehicle  
Caney Lakes Group Shelter: \$50-135.00, call for shelter reservations.

Camping Fees:  
Beaver Dam Campground: \$25/night (includes \$5 utility fee)  
www.recreation.gov for reservations.

The District has become a popular area for various hunting and fishing opportunities because of its close proximity to Minden, Shreveport, Ruston, and the Monroe areas.

REPORT WOODS ARSON:  
(855) 452-5323  
24 HOURS

Recreational Opportunities and Facilities on the Caney Ranger District



		Day-Use Picnic Area	Group-Use Picnic Area	Trailers and Campers	Recreational Vehicles	Tents	Water Hookups	Sanitary Hookups	Fire Rings/Grills	Swimming	Bank Fishing	Pier Fishing	Water Skiing	Motorized Boating	Non-Motorized Boating	Motorized Boat Launch	Non-Motorized Boat Ramp	Hiking	Biking	Interpretive	Horse	Off Road Vehicles	Flush Toilets	Vault Toilets	Shower	Drinking Water	Trash Disposal	
Caney Lakes Recreation Area																												
Caney Lakes Day-Use Area	\$5	✓									✓	✓	✓	✓	✓	✓	✓							✓		✓	✓	✓
Caney Lakes Ski Beach Area	\$5	✓									✓		✓	✓										✓		✓	✓	✓
Caney Lakes Group-Use Area <sup>(1)</sup>	Call		✓								✓	✓			✓	✓								✓		✓	✓	✓
Beaver Dam Campground	\$25			✓	✓	✓	✓	✓	✓	✓		✓			✓									✓		✓	✓	✓
Upper Caney Lake Boat Launch	\$5											✓			✓	✓	✓	✓						✓				
Lower Caney Lake Boat Launch North	\$5											✓	✓	✓	✓	✓	✓	✓						✓		✓	✓	✓
Lower Caney Boat Launch South	\$5											✓			✓	✓	✓	✓							✓			
Sugar Cane National Recreation Trail	\$5	✓																	✓	✓				✓		✓	✓	✓
Corney Lake Recreation Area																												
Corney Lake Day-Use Area	Free	✓										✓	✓		✓	✓	✓	✓						✓			✓	✓
Corney Lake Group-Use Area	Free		✓									✓	✓		✓	✓	✓	✓						✓			✓	✓
South Corney Lake Campground	Free				✓	✓	✓			✓		✓			✓	✓									✓		✓	✓
North Corney Lake Campground	Free	✓				✓	✓			✓				✓	✓													
North Corney Lake Boat Launch	Free						✓	✓				✓			✓	✓	✓	✓							✓			
Corney Lake Hunter Camp	Free					✓	✓																		✓		✓	✓
Hwy 9 Primitive Boat Launches	Free					✓	✓					✓			✓	✓	✓	✓										
Corney Bayou Boat Ramp	Free											✓			✓	✓	✓	✓							✓			✓
Hunter Camps																												
Sugar Creek Hunter Camp	Free					✓	✓																		✓			✓
Bucktail Hunter Camp	Free					✓	✓																		✓		✓	✓
Turkey Trot Hunter Camp	Free					✓	✓																		✓			✓

(1) \$60 - \$135 FOR Group Shelter, call for reservations.

**Camping:** Caney Lake’s Beaver Dam Campground can accommodate the largest of RVs. With electricity and water hookups, paved parking pads, and availability of showers and a nearby sanitary dump station, Beaver Dam Campground has become a very popular destination for vacationing travelers.

**Boating:** Visitors to the Caney Lakes Recreation Area will enjoy two different types of boating experiences. On Upper Caney Lake, a slow and calm journey around the picturesque lake shore is possible. On Lower Caney Lake, water skiing, wakeboarding, and jet-skis are popular activities, including a ski beach area for boaters to park their vessel and enjoy a covered picnic are in the grass. And visitors to Corney Lake will enjoy a great fishing opportunity, either from their boat, from shore, or from one of the fishing piers.

In accordance with Federal civil rights law and U.S. Department of Agriculture (USDA) civil rights regulations and policies, the USDA, its Agencies, offices, and employees, and institutions participating in or administering USDA programs from discriminating based on race, color, national origin, religion, sex, disability, age, marital status, family/parental status, income derived from a public assistance program, political beliefs, or reprisal or retaliation for prior civil rights activity, in any program or incident. Persons with disabilities who require alternative means for communication of program information (e.g., Braille, large print, audiotope, American Sign Language, etc.) should contact the responsible Agency or USDA's TARGET Center at (202)720-2600 (voice and TYY). USDA is an equal opportunity provider, employer, and lender.



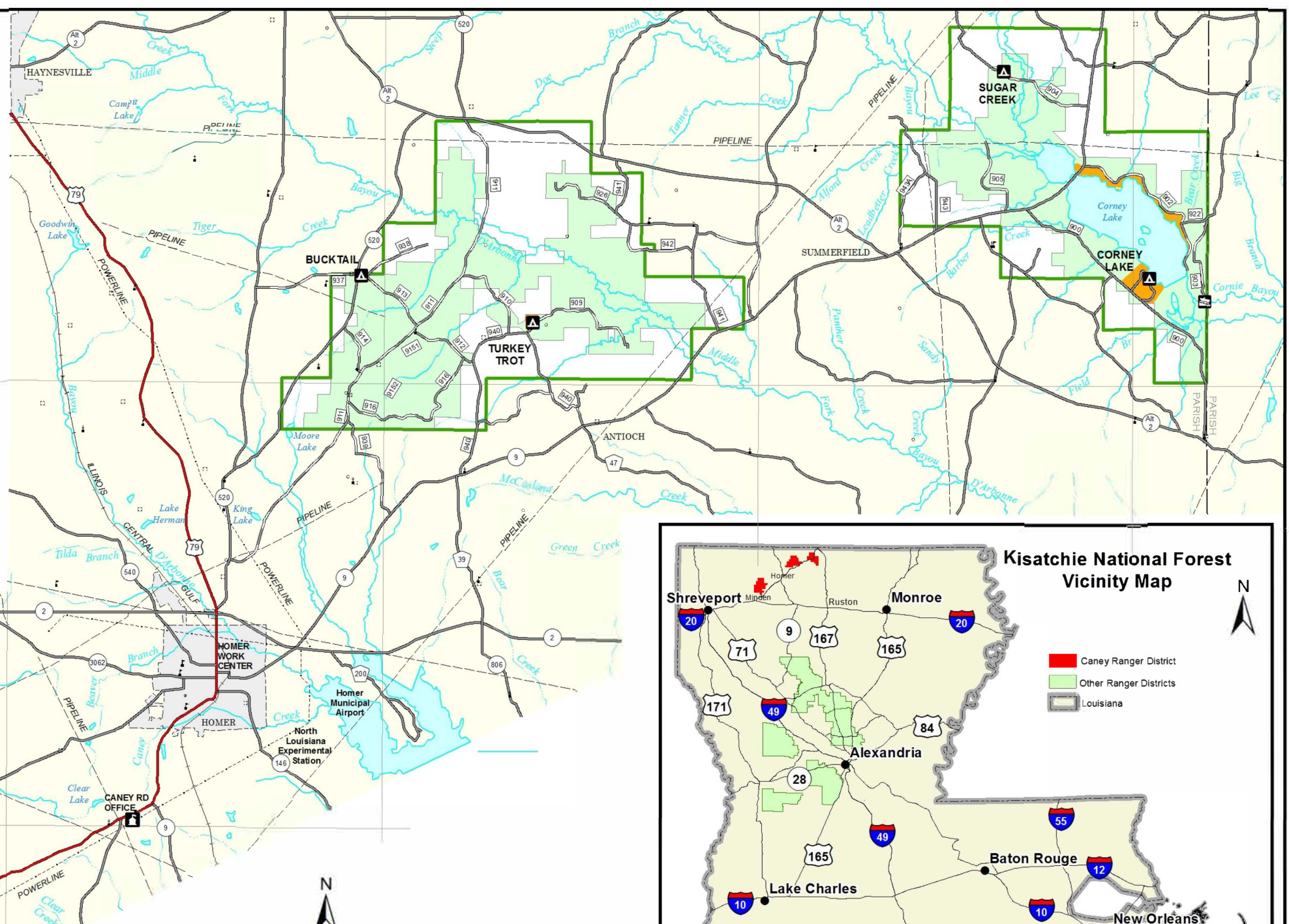
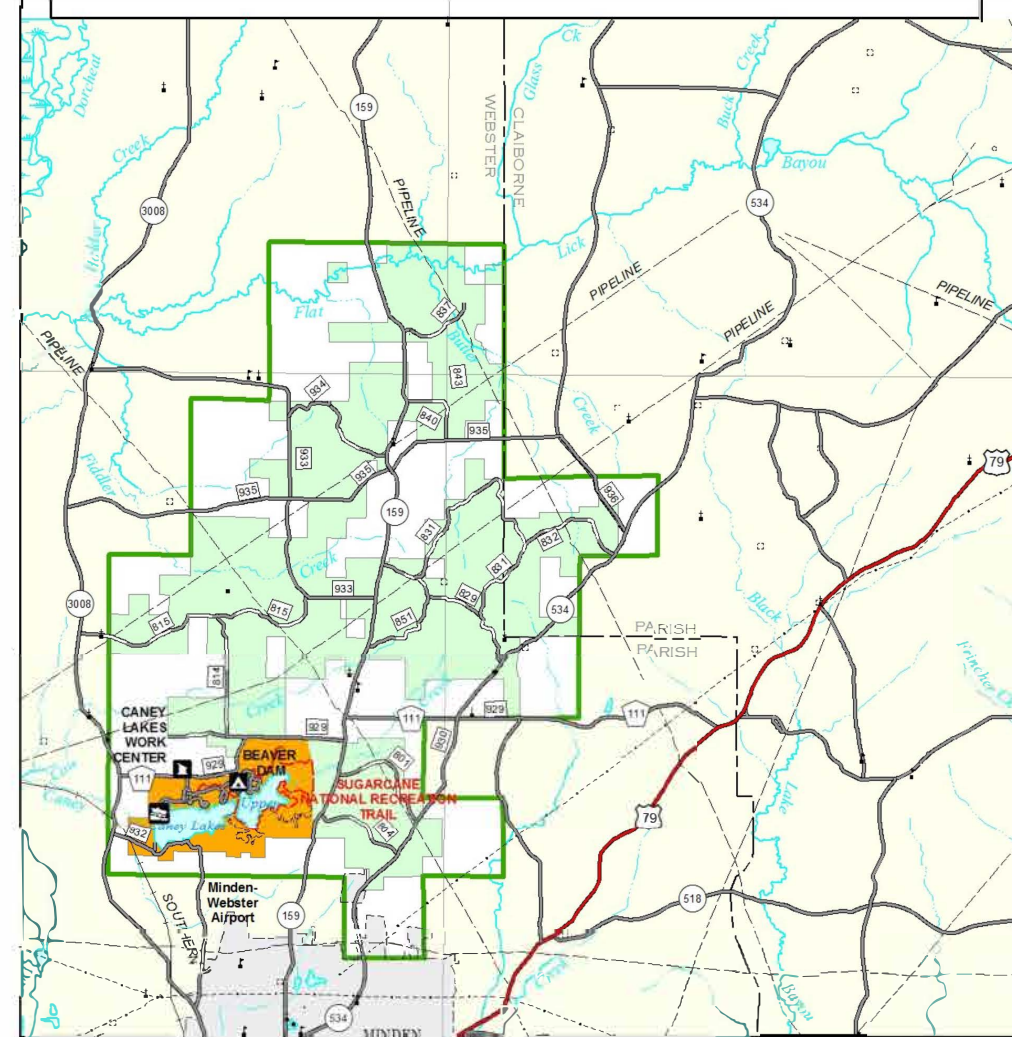


# CANEY RANGER DISTRICT

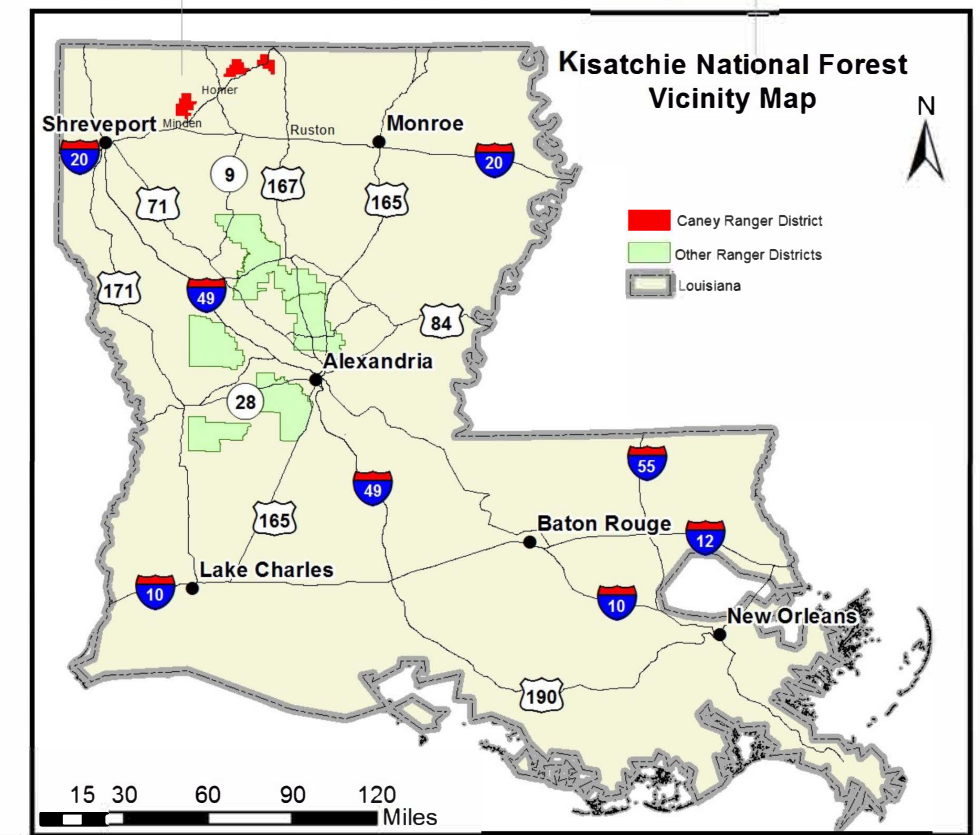
3288 Highway 79, Homer, LA 71040  
Office Hours: 7:30 a.m. - 4:00 p.m. M-F  
Phone (318) 927-2061 or (318) 927-2062

## Legend

- |  |                        |  |                           |
|--|------------------------|--|---------------------------|
|  | CAMPGROUND             |  | TRAIL - NATL REC / SCENIC |
|  | BOAT RAMP              |  | TRAIL                     |
|  | WORK CENTER            |  | RECREATION AREA           |
|  | RANGER DISTRICT OFFICE |  | WATER                     |
|  | BDY - USFS DISTRICT    |  | URBAN AREA                |
|  | US HWY                 |  | USDA FOREST SERVICE       |
|  | STATE HWY              |  |                           |
|  | PARISH                 |  |                           |
|  | FOREST SYSTEM          |  |                           |



**Kisatchie National Forest Supervisor Office**  
2500 Shreveport Hwy., Pineville, LA 71360  
Office Hours: 8:00 a.m. - 4:30 p.m. M-F Phone (318) 473-7160 TTY (318) 473-7254 OHV Hotline: (318) 473-7069  
<https://www.fs.usda.gov/r08/kisatchie/>



This product is reproduced from geospatial information prepared by the U.S. Department of Agriculture, Forest Service. GIS data and product accuracy may vary. They may be developed from sources of differing accuracy, accurate only at certain scales, based on modeling or interpretation, incomplete while being created or revised etc. Using GIS products for purposes other than those for which they were created may yield inaccurate or misleading results. The Forest Service reserves the right to correct, update, modify, or replace GIS products.