

Unit Highlights

Visitors to this Ranger District can enjoy the recreation serenity of an upland pine ecosystem, the historic past of Gum Springs Recreation Complex, and float along the bottomland hardwood forest of scenic Saline Bayou National Wild and Scenic River.

Surrounding Areas

Located in an area of hilly terrain and natural springs, Gum Springs Recreation Complex exhibits recreation design from the Civilian Conservation Corps era of the 1930’s and offers basic recreation opportunities of picnicking and camping, and is close to Gum Springs Horse Camp and Trail. Approximately 21 miles of Saline Bayou was designated a National Wild and Scenic River because of its unique qualities. It is a peaceful setting where bald cypress and other hardwoods growing along the banks are often reflected in the bayou’s quiet water. The bayou can flow over its banks during high water making the journey hazardous. Check with the Winn Ranger District about water conditions. Cloud Crossing Recreation Complex lies directly on the banks of Saline Bayou and is an ideal put-in/take-out point for boating or canoeing.

For More Information

Winn Ranger District  
12319 U.S. Highway 84 West  
Winnfield, Louisiana 71483-9501  
Phone: (318) 628-4664  
Fax: (318) 628-2971  
www.fs.usda.gov/r08/kisatchie  
OHV Hotline: (318) 473-7069  
Hours: 7:30 a.m. - 4:30 p.m. M-F

Winn Ranger District  
Kisatchie National Forest



Saline Bayou



Recreational Information

General

This District encompasses 164,000 acres of Winn, Natchitoches, and Grant Parishes. It is in close proximity to the Winnfield area.

Developed Recreation

The District administers two developed recreation complexes: Gum Springs and Cloud Crossing Recreation Complexes. The Gum Springs campground is a designated fee area.

Day Use Fees: Free

Camping Fees:

Gum Springs Campground: \$10/night  
Gum Springs Horse Trailhead Camp: \$10/single site/night

The District offers over 20 miles of canoeing along Louisiana’s only National Wild and Scenic River, Saline Bayou, and over 29 miles of hiking, biking, and horseback trails.

REPORT WOODS ARSON:  
(855) 452-5323  
24 HOURS

Recreational Opportunities and Facilities on the Winn Ranger District



		Daily Usage Fee		Group-Use Picnic Area		Recreational Vehicles		Trailers and Campers		Tents		Water Hookups		Electrical Hookups		Sanitary Dump Station		Fire Rings/Grills		Swimming		Bank Fishing		Pier Fishing		Water Skiing		Non-motorized Boating		Motorized Boat Launch		Non-motorized Boat Ramp		Hiking		Biking		Interpretive		Off Road Vehicles		Horse		Flush Toilets		Vault Toilets		Shower's		Drinking Water		Trash Disposal																																																																																																																																																																																																																																																																																																																																																																																																																																																																																																																																																																																																																																																																																																																																																																																																																																																																																																																																																																																																																																																																																																																																																																																																																																																																																																																																																																																																																																
Cloud Crossing Recreation Complex																																																																																																																																																																																																																																																																																																																																																																																																																																																																																																																																																																																																																																																																																																																																																																																																																																																																																																																																																																																																																																																																																																																																																																																																																																																																																																																																																																																																																																																																																				
Cloud Crossing Day-Use Site	Free	✓																✓					✓																																																																																																																																																																																																																																																																																																																																																																																																																																																																																																																																																																																																																																																																																																																																																																																																																																																																																																																																																																																																																																																																																																																																																																																																																																																																																																																																																																																																																																																													

(1) Recreational vehicles allowed but must be self-contained.

Saline Bayou National Wild and Scenic River Corridor

The Saline Bayou corridor is located west of Louisiana Hwy 1233. The northern boundary is north of Louisiana Hwy 126 and the southern border is Saline Lake.

There are various woods’ roads and highway entry points to the bayou, where a visitor can launch a canoe or take a pleasant hike within this healthy southern ecosystem. A visitor should watch for wood ducks, pileated woodpeckers, otters, and many other unusual wildlife species. This meandering bayou supports a wide variety of wildlife and plant species, and offers a rare opportunity to experience a range of ecosystems ranging from upland pine forest to cypress tupelo swamps.

Gum Springs Horse Trail

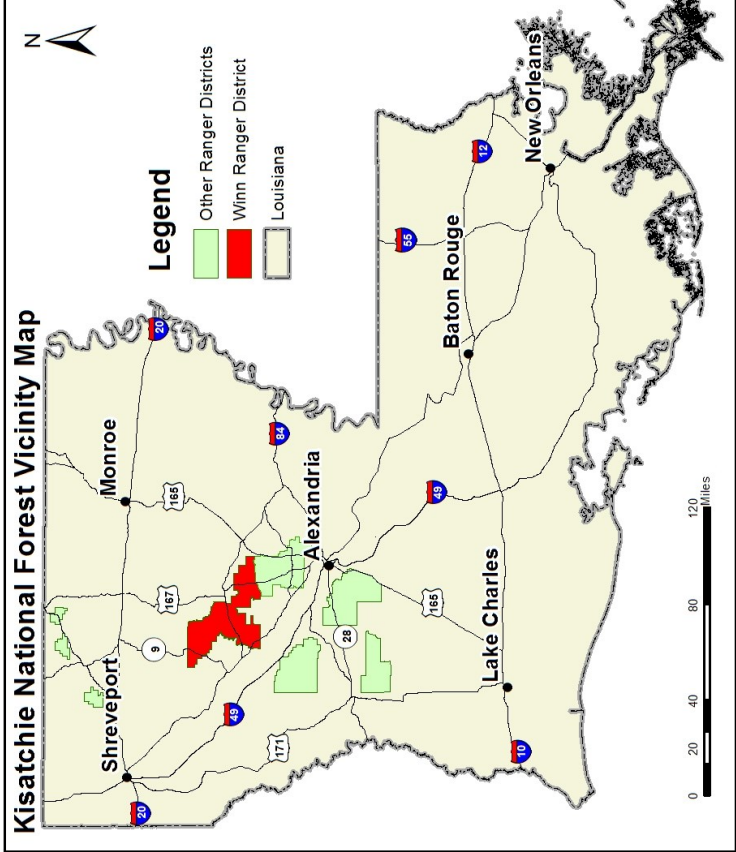
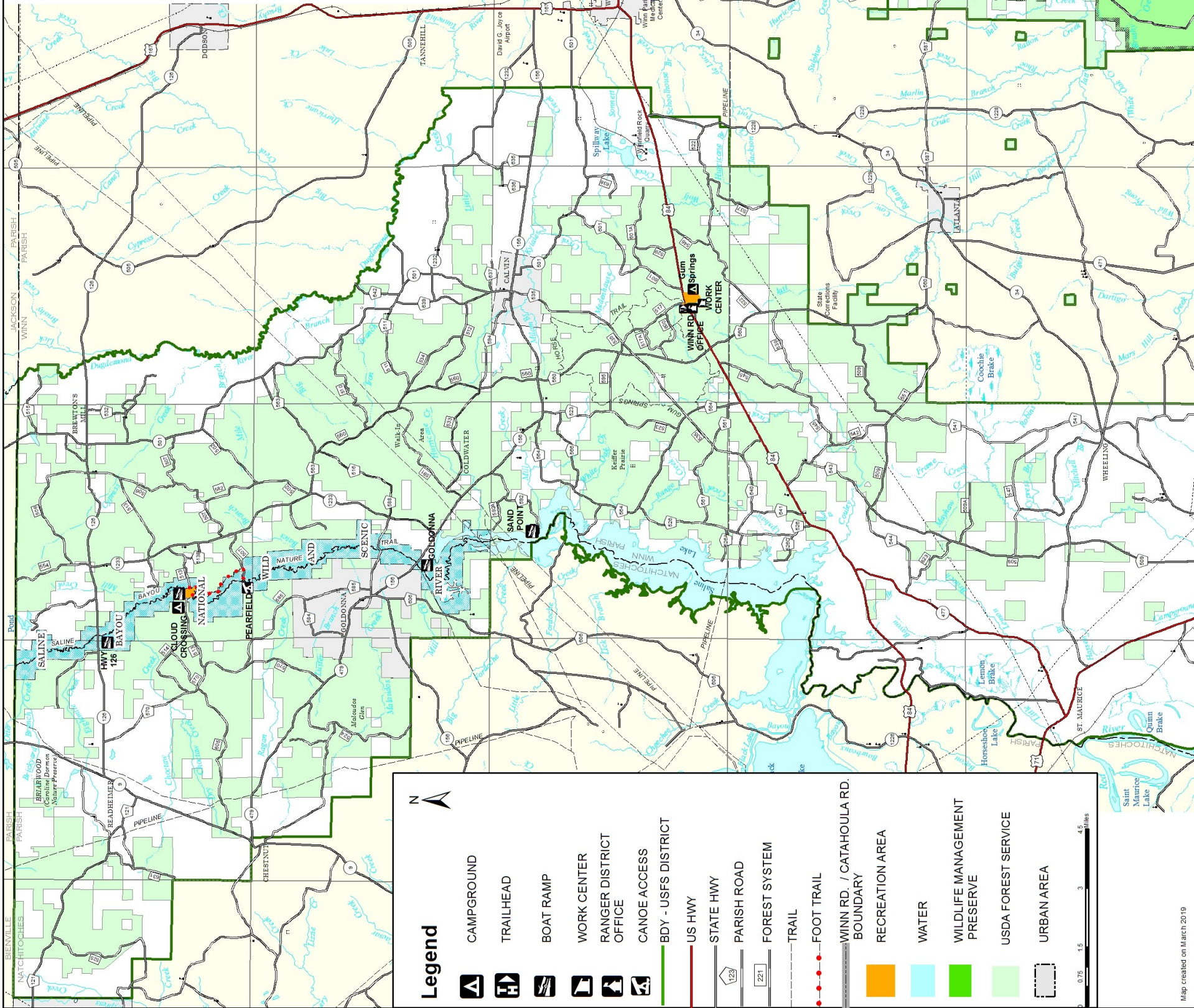
The Gum Springs Horse Trail is a tremendously popular destination not only for Louisianans, but for cowboys from Oklahoma, Nebraska, and other states. This is a great forest ride for cowboys and cowgirls and the trail is wide enough to accommodate wagons. Plan your next trail ride on the Gum Springs Horse Trail.

In accordance with Federal civil rights law and U.S. Department of Agriculture (USDA) civil rights regulations and policies, the USDA, its Agencies, offices, and employees, and institutions participating in or administering USDA programs are prohibited from discriminating based on race, color, national origin, religion, sex, disability, age, marital status, family/parental status, income derived from a public assistance program, political beliefs, or reprisal or retaliation for prior civil rights activity, in any program or activity conducted or funded by USDA (not all bases apply to all programs). Remedies and complaint filing deadlines vary by program or incident. Persons with disabilities who require alternative means of communication for program information (Braille, large print, audiotape, American Sign Language, etc.) should contact USDA's TARGET Center at (202) 720-2600 (voice and TTY) or contact USDA through the Federal Relay Service at (800)877-8339. Program information may be made available in languages other than English.





**Winn Ranger District**  
12319 U. S. Highway 84 West, Winnfield, Louisiana 71483  
Office Hours: 7:30 a.m. - 4:00 p.m. M-F  
Phone: (318) 628-4664 Fax: (318) 628-2971



**Kisatchie National Forest Supervisor Office**

2500 Shreveport Hwy., Pineville, LA 71360  
Office Hours: 8:00 a.m. - 4:30 p.m. M-F  
Phone (318) 473-7160 TTY (318) 473-7254  
OHV Hotline: (318) 473-7069  
<https://www.fs.usda.gov/r08/kisatchie>

This product is reproduced from information prepared by the U.S. Department of Agriculture, Forest Service. GIS data and product accuracy may vary. They may be developed from sources of differing accuracy, accurate only at certain scales, based on modeling or interpretation, incomplete, while being created or revised etc. The Forest Service reserves the right to correct, update, modify, or replace GIS products.