

Trail Description & Location

Welcome to the Calcasieu Ranger District! We hope you will enjoy your visit to the Kisatchie National Forest. Off-Highway Vehicle (OHV) use is one of the many recreation opportunities offered on the Evangeline Unit of the Calcasieu Ranger District. We have established approximately 70 miles of designated multiple-use trails which are available for an enjoyable experience for OHV riders as well as hikers, horseback riders and mountain bikers.

Fifteen miles south of Alexandria, Louisiana, lies the Claiborne Multiple-Use Trails. These trails loop through upland pine forest and the remains of an abandoned WWII military installation known as Camp Claiborne. The trail system consists of three separate loops that vary in distance and level of difficulty.

- North Loop

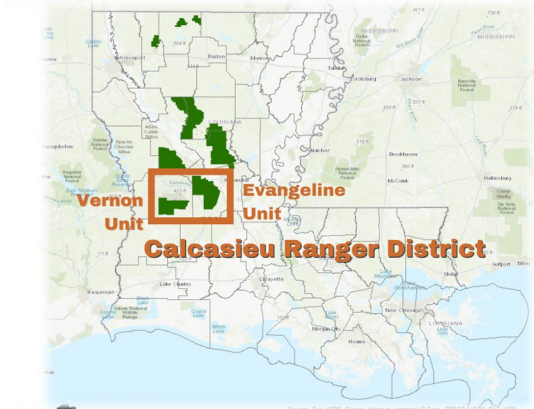
32 Miles
- Woodworth Loop

20 miles
- Boy Scout Loop (Single Track)

30 Miles

The trail loops are marked with orange markings and the primary trailhead/staging area is the Loran/Claiborne Trailhead Camp. From Alexandria, take US Hwy 165 south through Woodworth for 14 miles to LA Hwy 112. Turn right on LA Hwy 112 and go approximately 3 miles to FS Rd 258. Turn right on FS Rd 258 and proceed 1.5 miles to the Loran/Claiborne Recreation Area. Additional staging is available at Ahtus Melder Camp (Horses Only) and Boy Scout Camp. See the map for these locations.

CLAIBORNE
MULTIPLE-USE
TRAILS



For more information, please contact:

Calcasieu Ranger District
9912 Highway 28 West
Boyce, Louisiana 71409
Phone: (318) 793-9427 or (800) 225-9733
Website: www.fs.usda.gov/r08/kisatchie
OHV Hotline: (318) 473-7069

How to tread lightly!
LEAVING A GOOD IMPRESSION

- T

Travel and recreate with minimum impact

- Stay on designated routes.
 - Cross streams only at designated crossings.
 - Protect the soundscape by preventing unnecessary vehicle noise.
- R

Respect the environment and the rights of others

- Be considerate of others. Respect private land.
 - Yield the right of way to those passing you or traveling uphill. Yield to mountain bikers, hikers, and horses.
 - Keep the noise and dust down.
 - Pack out what you pack in.
- E

Educate yourself, plan and prepare before you go

- Obtain a map of your destination. Always tell someone of your travel plans.
 - Check the weather forecast.
 - Buddy up with two or three riders. Riding solo can leave you vulnerable if you have an accident or breakdown.
 - Know your limitations. Watch your time, your fuel, and your energy.
- A

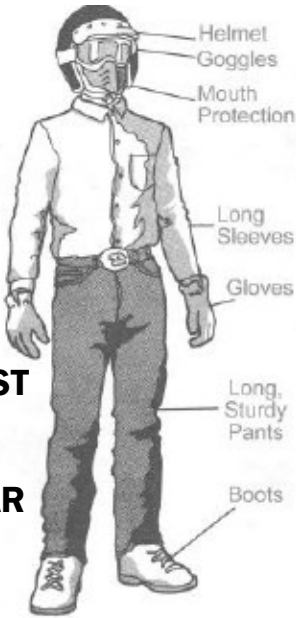
Allow for future use of the outdoors

- Leave it better than you found it
 - Carry a trash bag on your vehicle and pick up litter left by others.
 - Avoid spooking wildlife.
 - Following a ride, wash your ATV and support vehicle to reduce the spread of noxious weeds.
- D

Discover the rewards of responsible recreation

- OHV riding provides the opportunity to get away from the rush of everyday life and builds family tradition.
 - Careless operation of your vehicle can cause resource damage and may result in closing areas.
 - With common sense and common courtesy, what is available today will be here to enjoy tomorrow.

THINK!
SAFETY FIRST
WEAR YOUR
SAFETY GEAR



General Visitor Information

Visitors to the Kisatchie National Forest are asked to follow certain rules designated to protect the natural environment, ensure the health and safety of visitors and to promote pleasant and rewarding outdoor experiences for all. Please be familiar with the posted Code of Federal Regulations and Forest Supervisor's Orders governing the use of OHV's on National Forest lands. These regulations and orders are enforced and are punishable by law if violated.

Jeeps and 4-wheel drive vehicles are restricted to open roads and must be properly licensed for road use. Use of these vehicles on closed roads, in sensitive stream areas and certain utility rights-of-way is strictly prohibited.

Please remember to be careful! You are primarily responsible for your own safety. Look out for natural hazards and dangers when you are in the forest. Above all, think of yourself as an ambassador for trail riding. Your actions speak for all riders, so be sure that everyone you meet remembers trail riders as good citizens!

PLEASE NOTE THE FOLLOWING RULES

1. Stay on the "Designated Trail" only. No cross-country travel.
2. DO NOT ride OHV's on roads or the road rights-of-way.
3. Do NOT ride OHV's in the camping area or parking lot. Use the trail provided.
4. OHV's in excess of 50 inches in width are prohibited.
5. OHV tires with lug length in excess of 1 inch are prohibited.
6. ALL OHV's must have a spark arresting device (i.e. muffler).

7. OHV's in violation of applicable noise emission standards, in excess of 99 decibels at 20 inches from exhaust, are prohibited.
8. Careless or reckless operation without regard for safety of any person or property (i.e. wheelies, donuts, excessive speed) is prohibited.
9. Camp Area is 5 mph for all OHV's, motorcycles and vehicles.
10. Parking or leaving a vehicle in violation of posted instructions for "Day Use/Overnight Camping" is prohibited.
11. Riders under the age of 16 are the responsibility of legal guardians.
12. Day Use Hours are 6:00 a.m. to 8:00 p.m. or daylight to dark.
13. Quiet Hours are 10:00 p.m. to 6:00 a.m. in the camping areas.
14. Discharging any type of firearm, firework or explosive within 150 yards of the recreation area is prohibited.
15. Short cutting a switchback or any designated trail is prohibited.
16. Causing resource damage—operation of OHV's in ponds, creeks, powerline or water line rights-of-way is prohibited.
17. DO NOT damage or cause damage to the trail. No mudding or riding when soil conditions are wet.

Property and Sanitation

- ⇒ Preserve and protect your National Forests. Leave natural areas the way you find them. Don't carve, chop, cut or damage any living tree. Use tree-saver straps when tying down horses.
- ⇒ Throw all garbage and litter in containers provided for this purpose, or take it with you.

Property and Sanitation (Continued)

- ⇒ Indian sites, old cabins and other structures along with objects and associated artifacts have historic and/or archeological value. Damaging or removing any historic or archeological resource is strictly prohibited.
- Camping and Campfires**
- ⇒ Campgrounds and other recreation sites can be used for recreation purposes. In campgrounds, camp only in those places specifically marked or provided.
- ⇒ Obey restrictions on fires. Fires may be limited or prohibited at certain times. Within campgrounds and other recreation sites, build fires only in fire rings, stoves, grills or fireplaces provided for that purpose.
- ⇒ Remove all personal property and trash. Be sure your fire is completely extinguished before leaving. You are responsible for keeping fires under control.

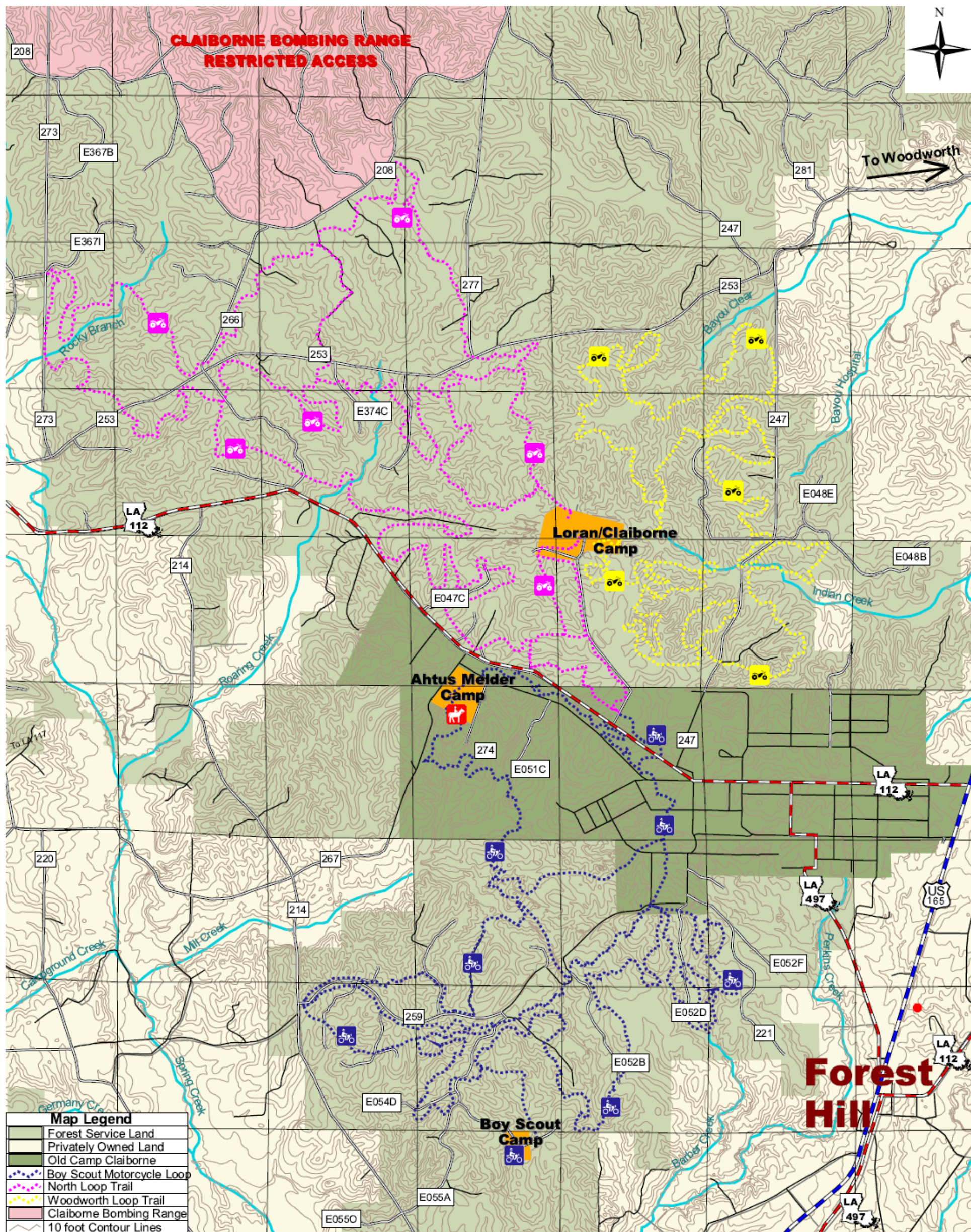
Public Behavior

- ⇒ Audio devices, such as a radio or musical instrument, must be operated at reasonable sound levels so as not to disturb other visitors.
- ⇒ Pets must always be restrained or on a leash while in developed recreation areas. Saddle or pack animals are allowed in recreation areas only where authorized by posted instructions.
- ⇒ No fighting or boisterous behavior.
- ⇒ Firing a gun is not allowed: (a) in or within 150 yards of a residence, building, campsite, developed recreation site or occupied area, (b) across or on a road or body of water and (c) in any circumstance whereby any person may be injured or property damaged.

CALCASIEU RANGER DISTRICT - EVANGELINE UNIT

9912 Highway 28 West, Boyce, Louisiana 71409 (318) 793-9427

CLAIBORNE MULTIPLE-USE TRAIL



Map Legend	
	Forest Service Land
	Privately Owned Land
	Old Camp Claiborne
	Boy Scout Motorcycle Loop
	North Loop Trail
	Woodworth Loop Trail
	Claiborne Bombing Range
	10 foot Contour Lines

Kisatchie National Forest

2500 Shreveport Highway, Pineville, LA 71360 Phone (318)473-7160
TTY (318)473-7254 OHV Hotline (318)473-7069



DATE: December 2025
Southern Region