

Welcome to the Manti-La Sal National Forest

Moab-Monticello District

The Manti-La Sal National Forest is a diverse landscape. Whether you enjoy deep sandstone canyons, mountaintops, meadows, lakes or streams, you can find a favorite get-away here. The Moab-Monticello District consists of two separate "forests," the La Sal Mountains near Moab and the Abajo Mountains/Elk Ridge and Dark Canyon Wilderness near Monticello and Blanding. These National Forest landscapes are easily recognized as the high peaks rising above the desert below. They are well known for stunning vistas and great recreational pursuits. Evidence of past peoples' lives is found throughout the Manti-La Sal National Forest, however the Moab-Monticello District contains a remarkable number of Ancestral Puebloan archeological sites.

Today the Forest offers people a retreat from the hurry of modern life. If you seek peace and quiet, an opportunity to see some of the most memorable views in Utah, or engage in driving, hiking, biking, hunting, fishing, camping or climbing, you can find it here.

Whether you visit the Forest for a day, a weekend, a week, or longer, we welcome you and hope this map helps you find your way through this incredible landscape.

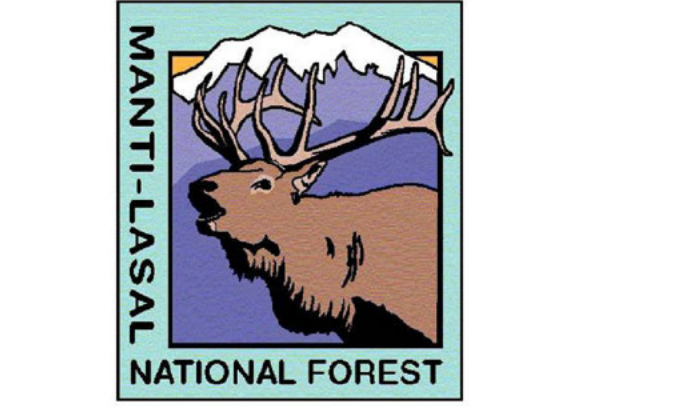


VICINITY MAP

Complete route numbers begin with the number 5 for the Manti-La Sal National Forest. Route numbers shown on the table include this prefix (ex. 50014).

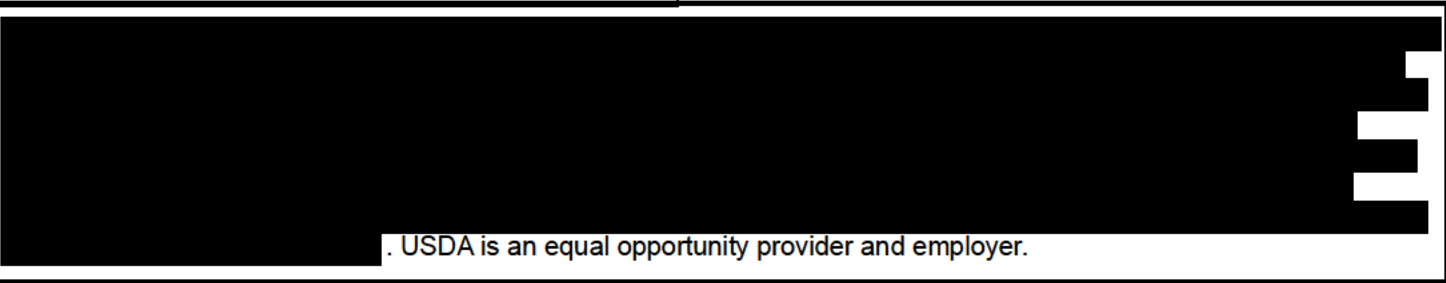
BLANKET STATEMENTS FOR TRAVEL MANAGEMENT

Motor vehicle use off of designated roads and trails for the purpose of dispersed camping is permitted for up to 150 feet from the centerline of the road or trail for the period 01/01 to 12/31.



HOW TO USE THIS MAP

This Travel Map is a companion map to the Forest Motor Vehicle Use Map (MVUM) and Forest Visitor Map. It is intended to give more information about the landscape where roads and motorized trails are located, and provide better wayfinding for the user than the MVUM. This Travel Map does not display non-motorized trails or detailed information regarding features and attractions that are found on the Forest Visitor Map. It should not be relied on as a legal depiction of designated roads and trails. The MVUM is published annually and identifies the roads, trails, and areas where motor vehicles are allowed. In general, motorized travel off designated roads and trails is prohibited. Please see the MVUM for information on this type of activity. This Travel map shows only long-term general rules; the Forest Supervisor may issue temporary orders that differ from this map. Temporary orders are available for public view at the District Offices and the Forest



USDA is an equal opportunity provider and employer.

Respect and Protect Archeological Sites

- The Moab-Monticello District is rich in archeological sites and artifacts. Many are thousands of years old. Archeological and historical sites give us a sense of place, of where we came from, and who we are. When sites are disturbed, much of our understanding of the past is lost forever. Most cultural sites have sacred meaning to native tribes. Please treat these sites with respect.
- View sites from a distance.
 - Watch where you step; avoid discolored soils and artifacts.
 - Stay off from walls and roofs.
 - Don't move or take artifacts, even if it is just a fragment among many.
 - Don't touch or alter rock art.
 - Never build fires in alcoves.
 - Don't camp in or near cultural sites.
 - Don't bring pets into cultural sites.

DARK CANYON WILDERNESS

In 1984 Dark Canyon became the first major Colorado Plateau Canyon terrain to be added to the National Wilderness Preservation System. Wilderness areas are places where you can find solitude and enjoy nature without the imprint of human activities.

All motorized and mechanized equipment are prohibited in Wilderness areas. This includes the use of motor vehicles, motorboats, motorized equipment, bicycles, hang gliders, wagons, and carts.

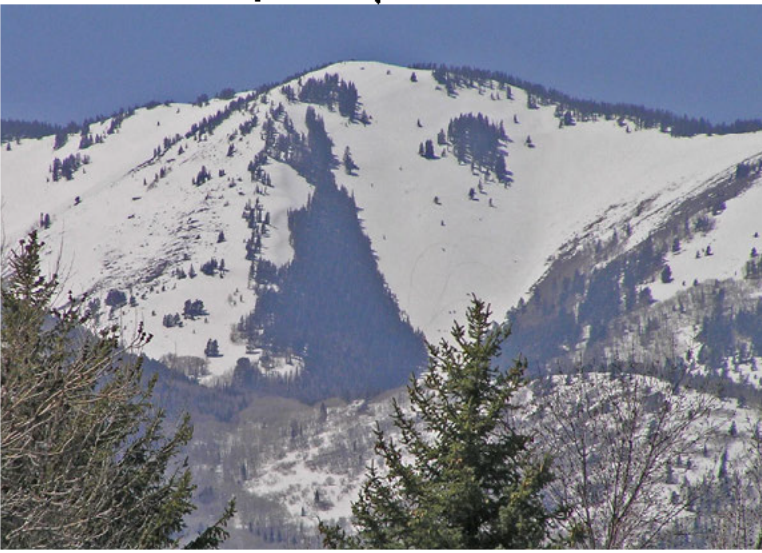
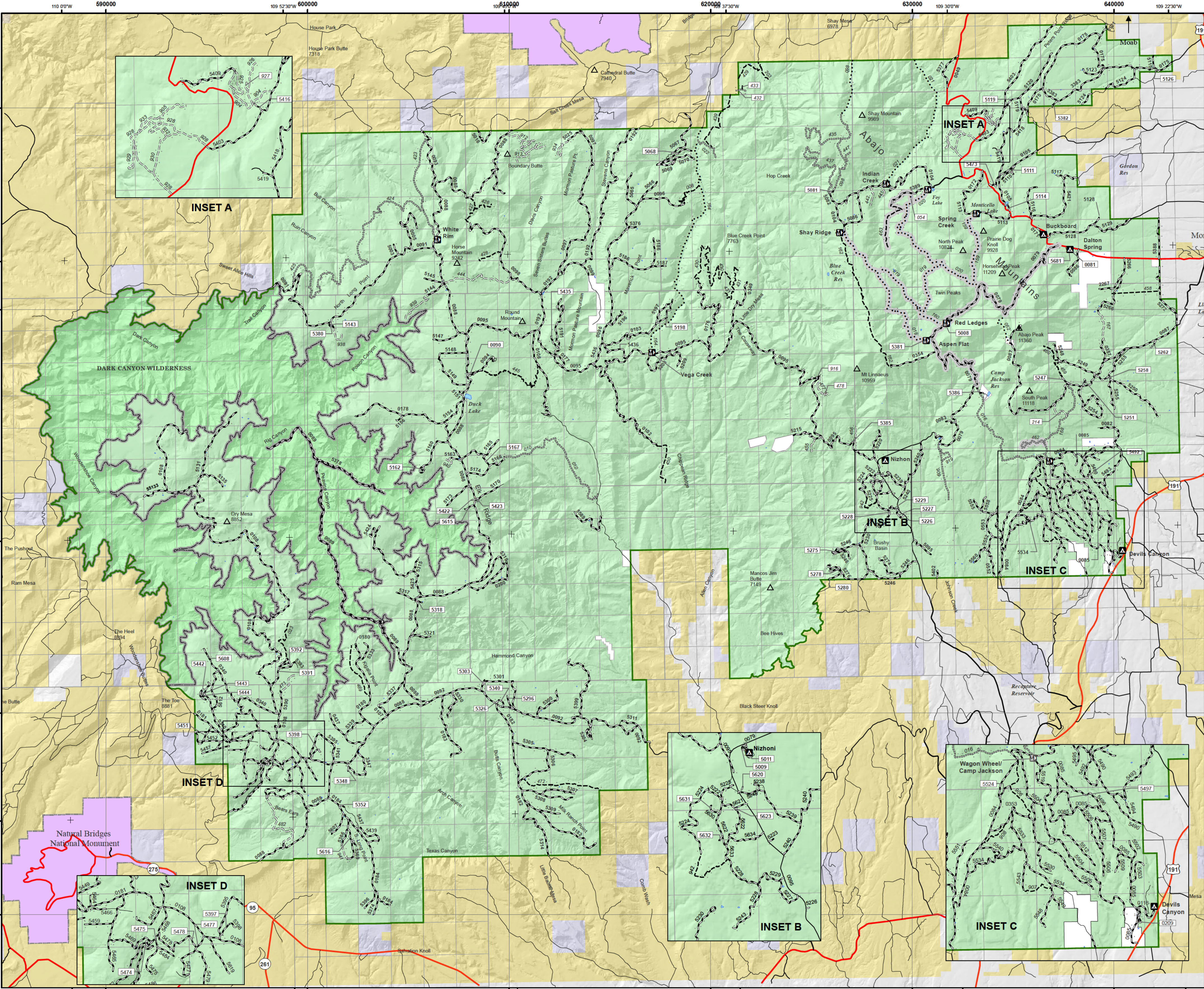
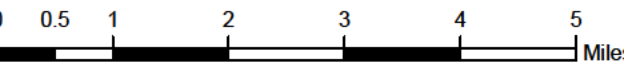
Careless use of these areas can cause trampled vegetation, damaged trees, soil erosion, polluted water, campfire scars, scattered waste and garbage. Please accept a PERSONAL CHALLENGE to preserve the pristine beauty and serenity of the backcountry and wilderness by LEAVING NO TRACE of your visit.

Cautions about water: When visiting Dark Canyon Wilderness plan to carry all the water you may need with you and or contact those with local knowledge for the location of the very few water sources. Call the Monticello District Office at 435-587-2041 or check Wilderness.net for updates on water and trail conditions.



Legend

- Roads Open to Highway Legal Vehicles
- Roads Open to all Vehicles
- Trails Open to all Vehicles
- Trails Open to Vehicles 50" or Less in Width
- - - Trails Open to Wheeled Vehicles 50" or Less in Width
- Trails Open to Motorcycles Only
- Special Vehicle Designation (See Table)
- Seasonal Designation (See Table)
- Interstate
- Highways, US, State
- County & Other Public Roads
- Other Public Trails
- Short Route Identifier
- Milepost Marker
- FS Campgrounds
- Picnic Area
- Motorized Trailhead
- Information Site
- Peaks
- Forest Boundary
- National Forest System Lands
- Non-National Forest System Lands within the National Forest
- Wilderness Areas
- Political Boundary
- Township and Range Lines
- Section Lines
- Large Lakes and Rivers
- BLM
- NPS / OTHER FED
- PRIVATE OR UNDESIGNATED
- STATE LAND - PUBLIC USE
- STATE LAND OTHER



Dispersed Camping			
Route Number	Distance/Side of Road	Vehicle Type	Dates Allowed
50089, 55378	33' either side	Same as permitted on road	Same as permitted on road
All other routes	150' either side	Same as permitted on road	Same as permitted on road

Monticello Ranger District

Seasonal and Special Vehicle Designations			
Route Number	Legend	Special Vehicle Designation	Dates Allowed
5010, 5036, 5108, 5423, 5424, 5425, 5435, 5437, 5447, 5509, 5519	Special Vehicle Designation	Trails open to vehicles 60" or less in width with 4 or more low pressure tires	Year-round
50079	Roads open to all Vehicles, with Seasonal Designation	Seasonal Designation	09/17-09/30
5018, 5019, 5020, 5054, 5159, 5160	Trails open to motorcycles, with Seasonal Designation	Seasonal Designation	05/16-09/30
5463	Trails open to vehicles 50" or less in width, with Seasonal Designation	Seasonal Designation	05/16-09/30

Routes Too Short to Be Seen Clearly on the Map	
Route Number	Legend
5054	Trails Open to Motorcycles Only, Seasonal
5214, 5478	Trails Open to All Vehicles, Yearlong
5432, 5433, 5916, 5927	Trails Open to Vehicles 50" or Less in Width, Yearlong
50081, 50090, 50209, 50208, 55009, 55011, 55068, 55081, 55111, 55114, 55119, 55126, 55143, 55162, 55167, 55198, 55226, 55227, 55228, 55229, 55247, 55251, 55262, 55275, 55278, 55280, 55296, 55303, 55318, 55326, 55340, 55348, 55352, 55380, 55381, 55382, 55385, 55386, 55391, 55392, 55397, 55398, 55416, 55422, 55423, 55435, 55442, 55443, 55444, 55451, 55473, 55474, 55475, 55477, 55478, 55497, 55524, 55608, 55615, 55616, 55620, 55623, 55631, 55632, 55681	Roads Open to All Vehicles, Yearlong