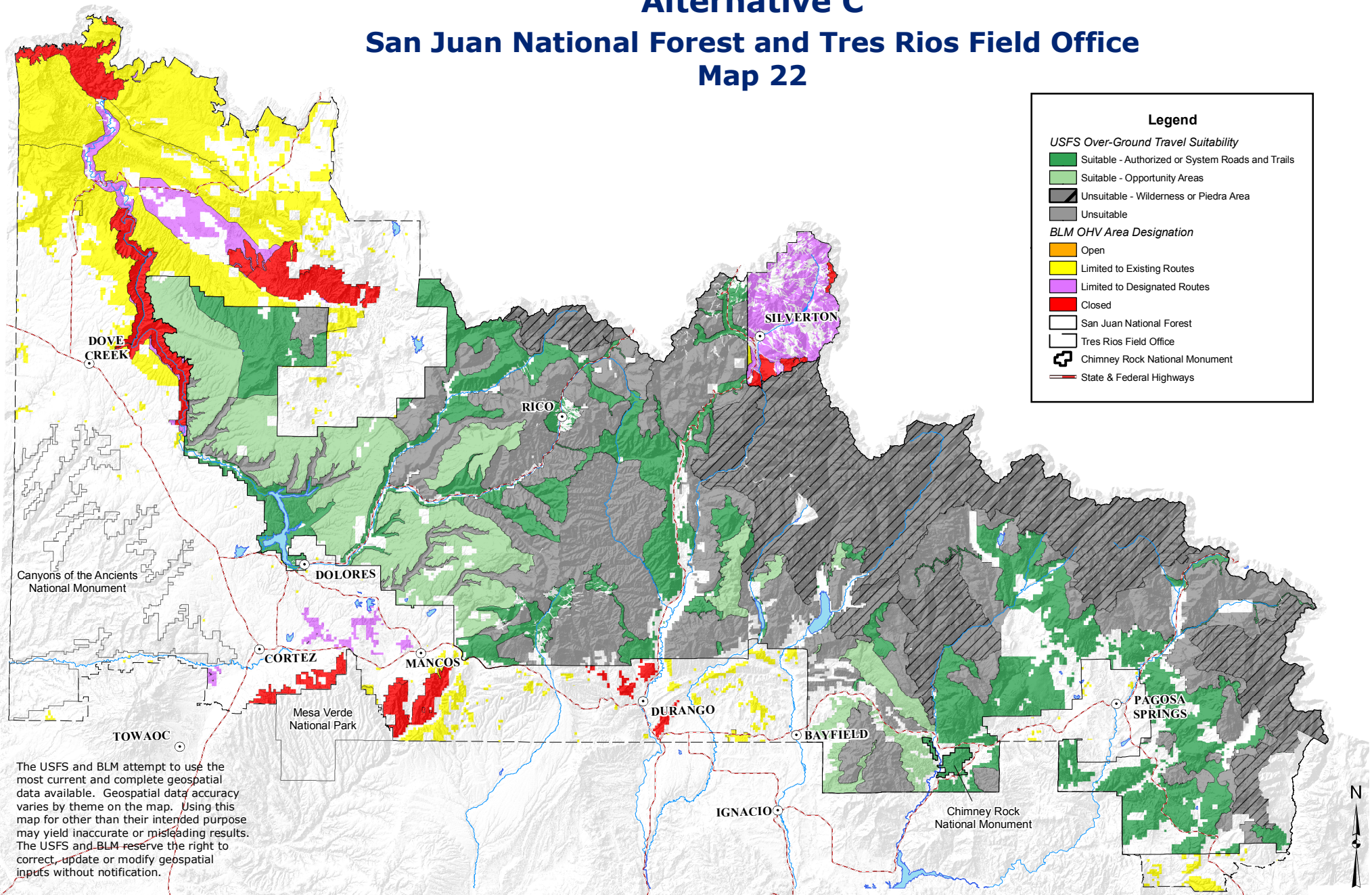


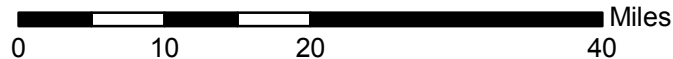
# Over-Ground Travel Suitability and OHV Area Designations Alternative C

## San Juan National Forest and Tres Rios Field Office Map 22



The USFS and BLM attempt to use the most current and complete geospatial data available. Geospatial data accuracy varies by theme on the map. Using this map for other than their intended purpose may yield inaccurate or misleading results. The USFS and BLM reserve the right to correct, update or modify geospatial inputs without notification.

MDR  
NAD 83, Polyconic Projection  
May 30, 2013



San Juan National Forest and Tres Rios Field Office  
Final Environmental Impact Statement