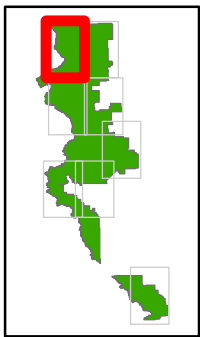
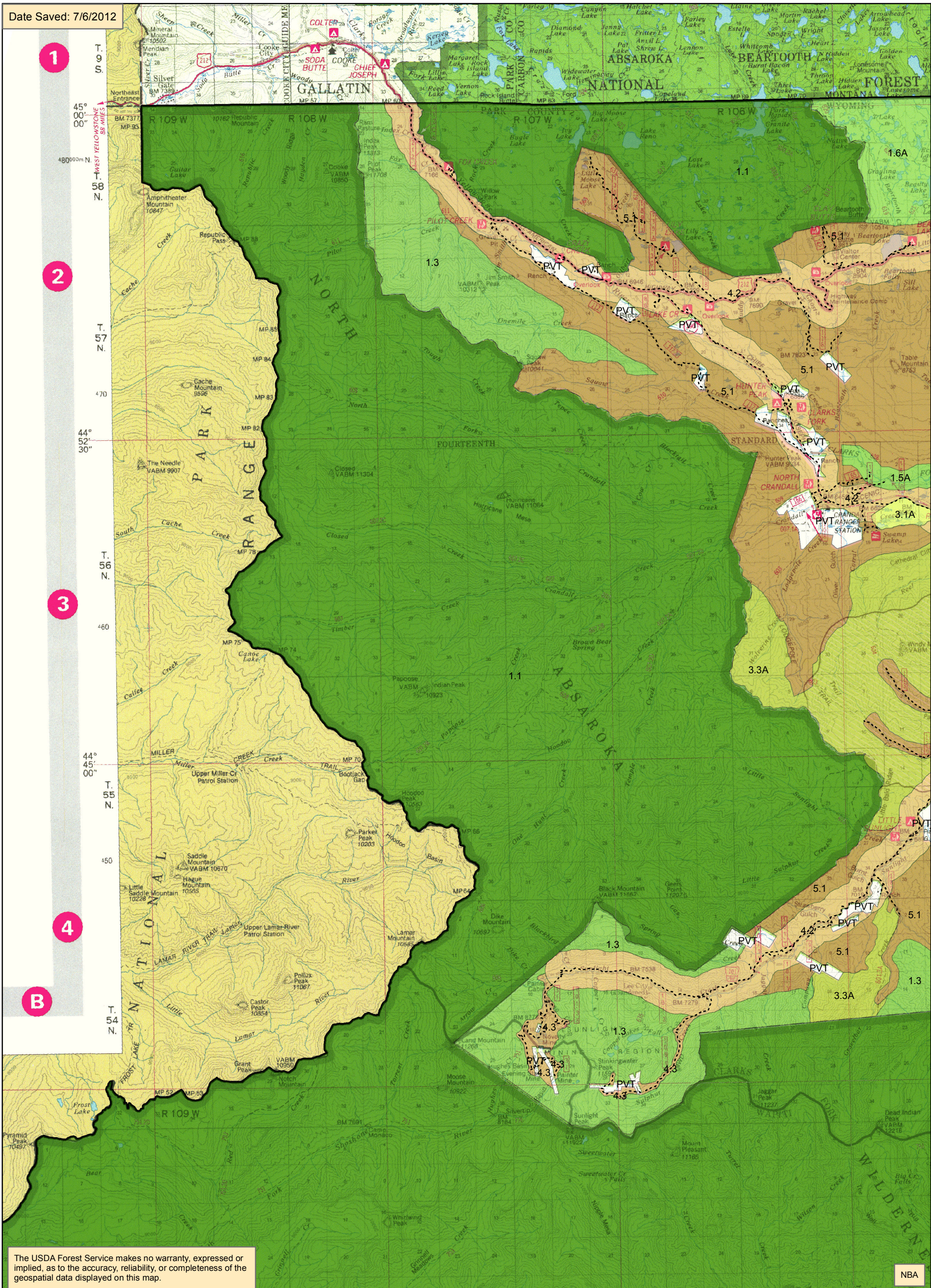
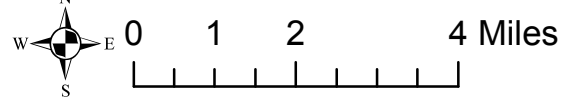


Map 6 (pg 1 of 8) alternative F management areas west Clarks Fork



Legend

- Existing Open Road
- Existing Motorized Trails
- Alt F management area**
- 1.1 Wilderness
- 1.1A Glacier Addition
- 1.3 Back Cntry NonMotorized
- 1.5A Clarks Fork Wild River
- 1.6A High Lakes WSA
- 1.6B Dunoir SMU
- 2.2A Line Creek RNA
- 3.1A Swamp Lake SIA
- 3.3A Back Cntry Motorized
- 3.3C Back Cntry Summer Motorized
- 4.2 Travel Corridor
- 4.3 Back Cntry Access Corridor
- 5.1 Mngd Forest & Rangelands
- 8.2 Ski-based Resort

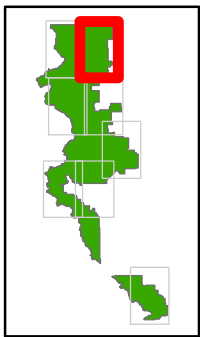


Date Saved: 7/6/2012

The USDA Forest Service makes no warranty, expressed or implied, as to the accuracy, reliability, or completeness of the geospatial data displayed on this map.

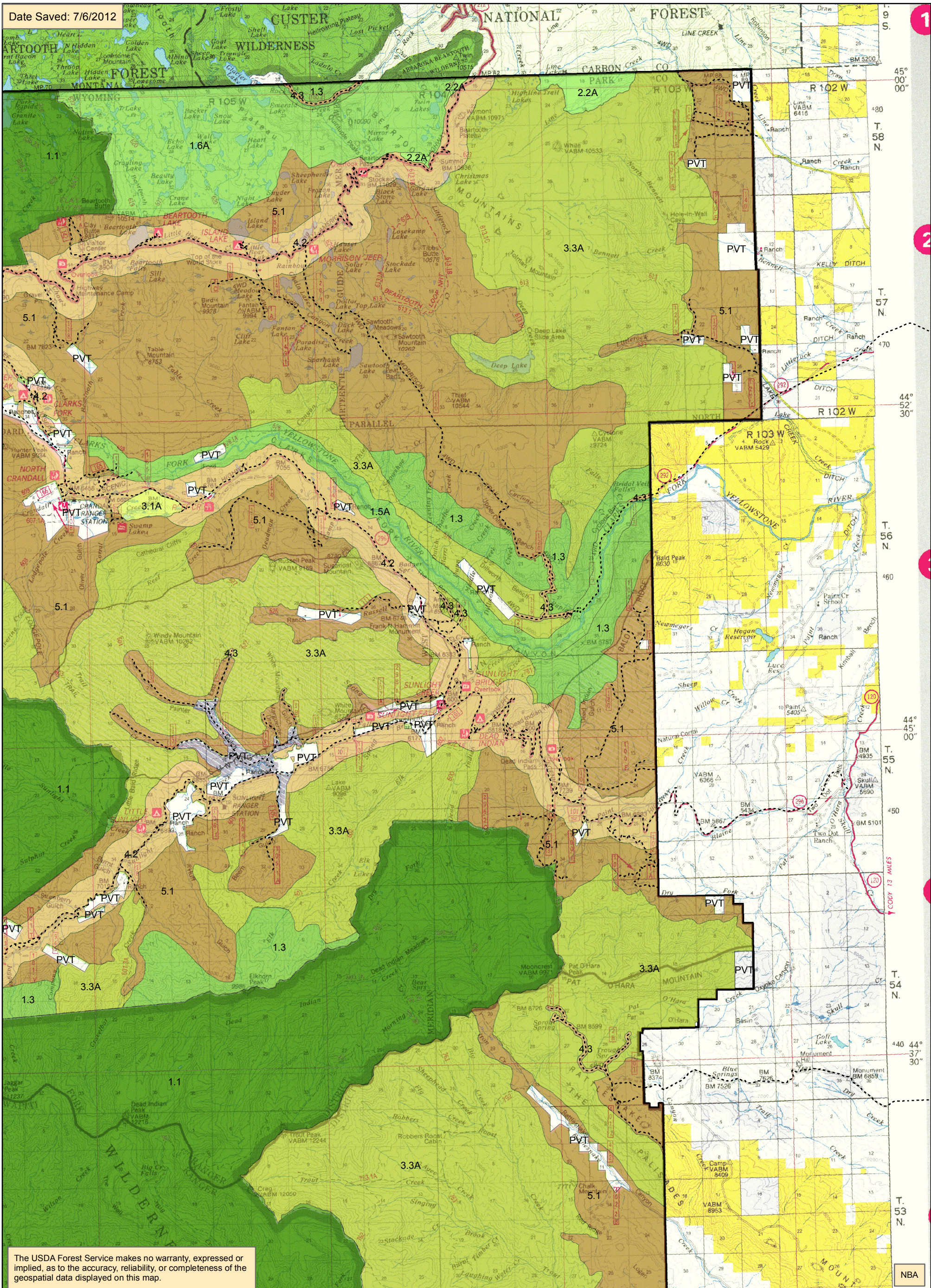
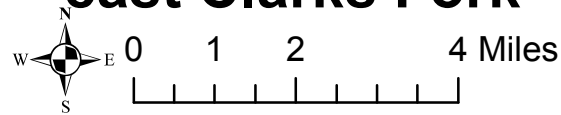
NBA

Map 6 (pg 2 of 8) alternative F management areas east Clarks Fork



Legend

- Existing Open Road
- Existing Motorized Trails
- Alt F management area**
- 1.1 Wilderness
- 1.1A Glacier Addition
- 1.3 Back Cntry NonMotorized
- 1.5A Clarks Fork Wild River
- 1.6A High Lakes WSA
- 1.6B Dunoir SMU
- 2.2A Line Creek RNA
- 3.1A Swamp Lake SIA
- 3.3A Back Cntry Motorized
- 3.3C Back Cntry Summer Motorized
- 4.2 Travel Corridor
- 4.3 Back Cntry Access Corridor
- 5.1 Mngd Forest & Rangelands
- 8.2 Ski-based Resort

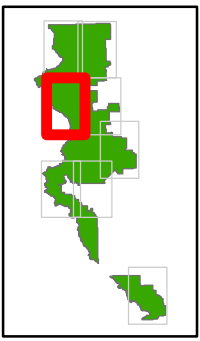


Date Saved: 7/6/2012

The USDA Forest Service makes no warranty, expressed or implied, as to the accuracy, reliability, or completeness of the geospatial data displayed on this map.

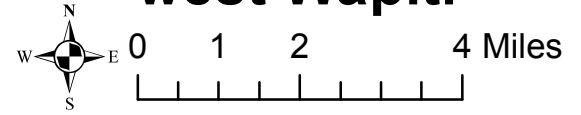
NBA

Map 6 (pg 3 of 8) alternative F management areas west Wapiti

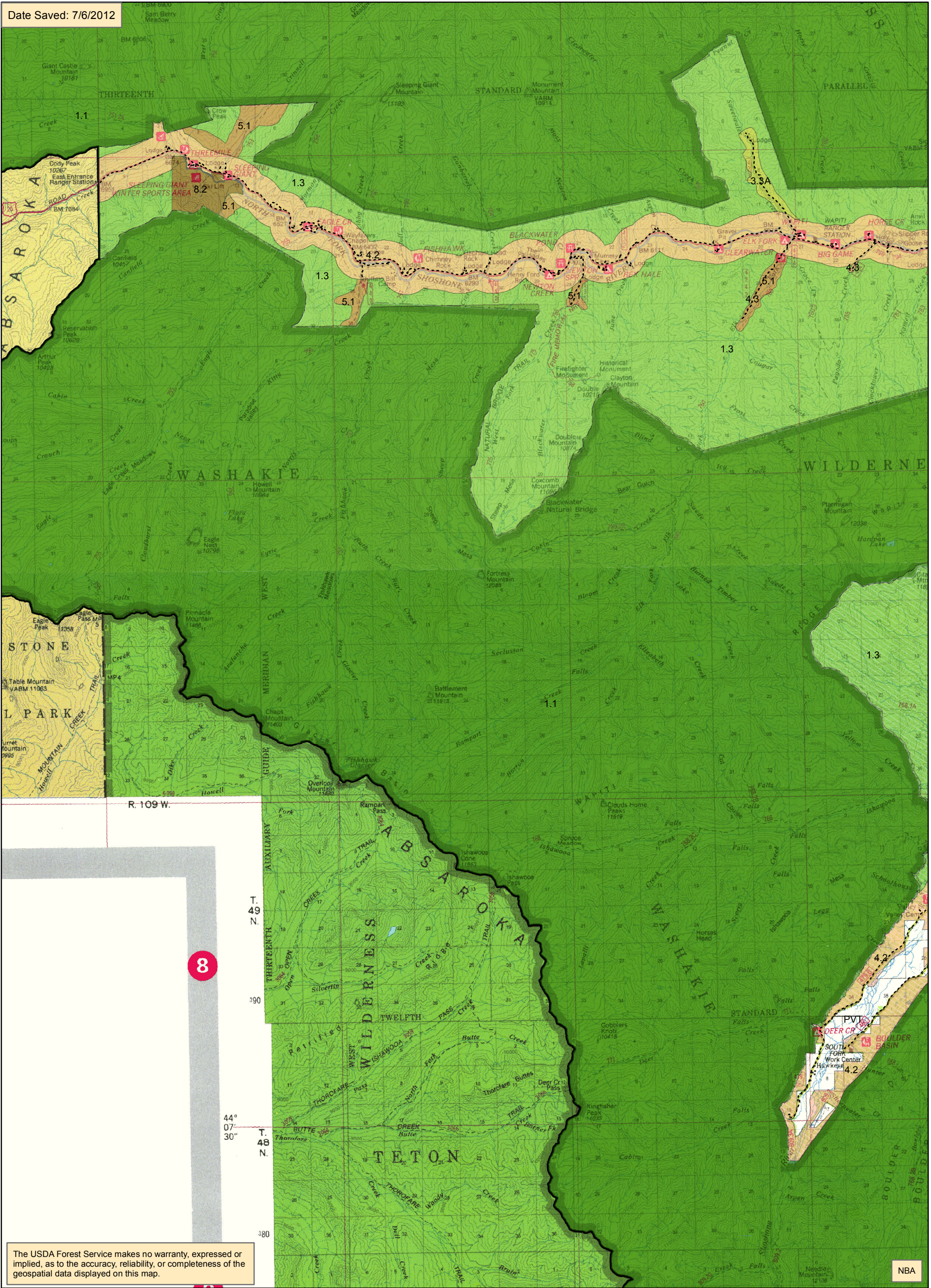


Legend

- | | | |
|-------------------------------|-----------------------------|----------------------------------|
| --- Existing Open Road | 1.3 Back Cntry NonMotorized | 3.3A Back Cntry Motorized |
| --- Existing Motorized Trails | 1.5A Clarks Fork Wild River | 3.3C Back Cntry Summer Motorized |
| Alt F management area | 1.6A High Lakes WSA | 4.2 Travel Corridor |
| 1.1 Wilderness | 1.6B Dunoir SMU | 4.3 Back Cntry Access Corridor |
| 1.1A Glacier Addition | 2.2A Line Creek RNA | 5.1 Mngd Forest & Rangelands |
| | 3.1A Swamp Lake SIA | 8.2 Ski-based Resort |



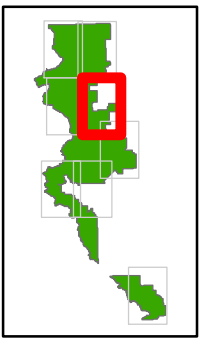
Date Saved: 7/6/2012



The USDA Forest Service makes no warranty, expressed or implied, as to the accuracy, reliability, or completeness of the geospatial data displayed on this map.

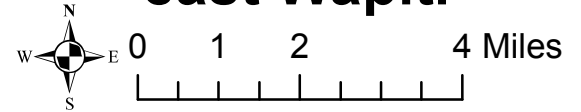
NBA

Map 6 (pg 4 of 8) alternative F management areas east Wapiti

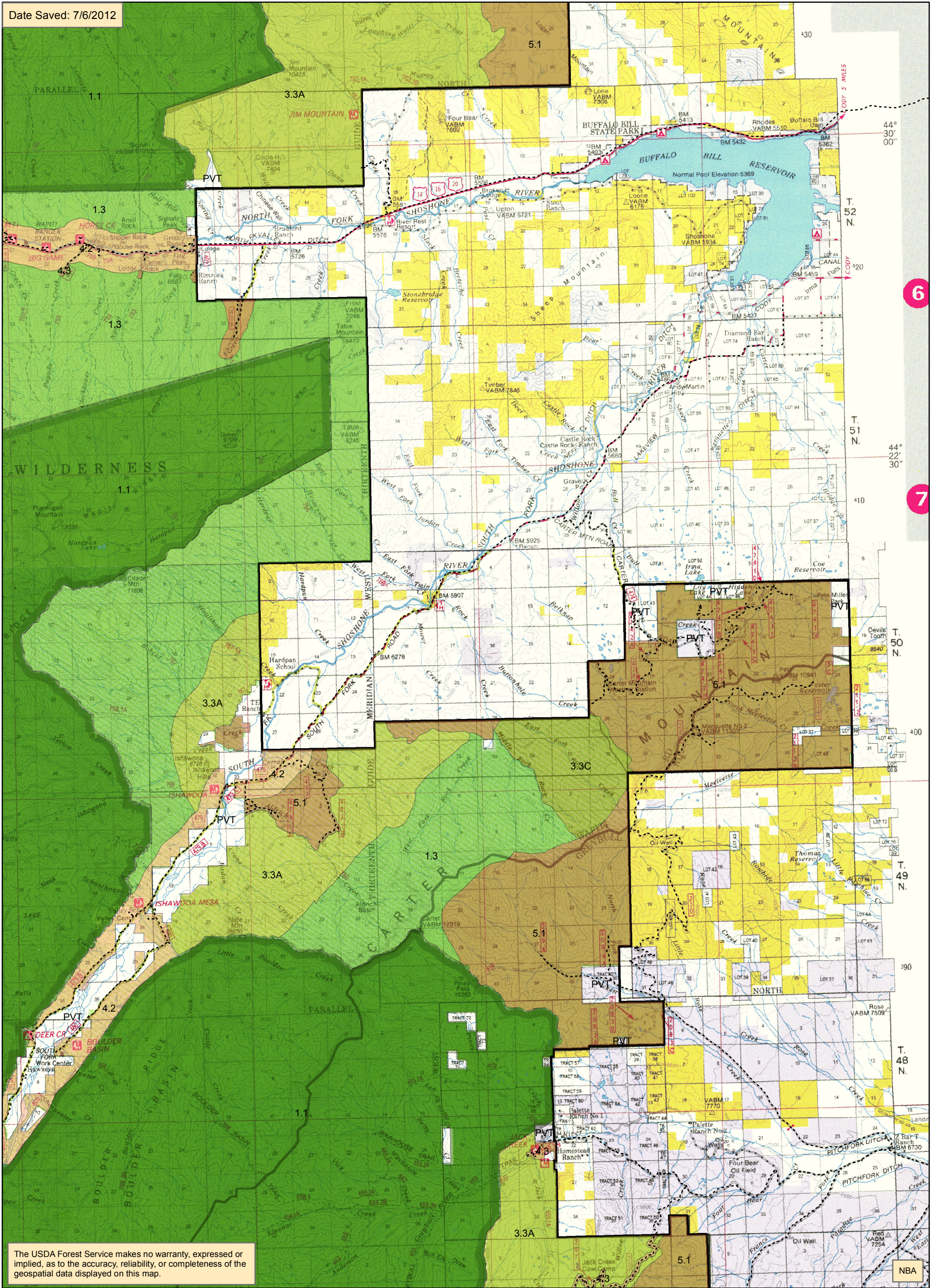


Legend

- Existing Open Road
- Existing Motorized Trails
- Alt F management area**
- 1.1 Wilderness
- 1.1A Glacier Addition
- 1.3 Back Cntry NonMotorized
- 1.5A Clarks Fork Wild River
- 1.6A High Lakes WSA
- 1.6B Dunoir SMU
- 2.2A Line Creek RNA
- 3.1A Swamp Lake SIA
- 3.3A Back Cntry Motorized
- 3.3C Back Cntry Summer Motorized
- 4.2 Travel Corridor
- 4.3 Back Cntry Access Corridor
- 5.1 Mngd Forest & Rangelands
- 8.2 Ski-based Resort



Date Saved: 7/6/2012



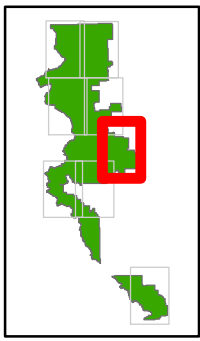
The USDA Forest Service makes no warranty, expressed or implied, as to the accuracy, reliability, or completeness of the geospatial data displayed on this map.

6

7

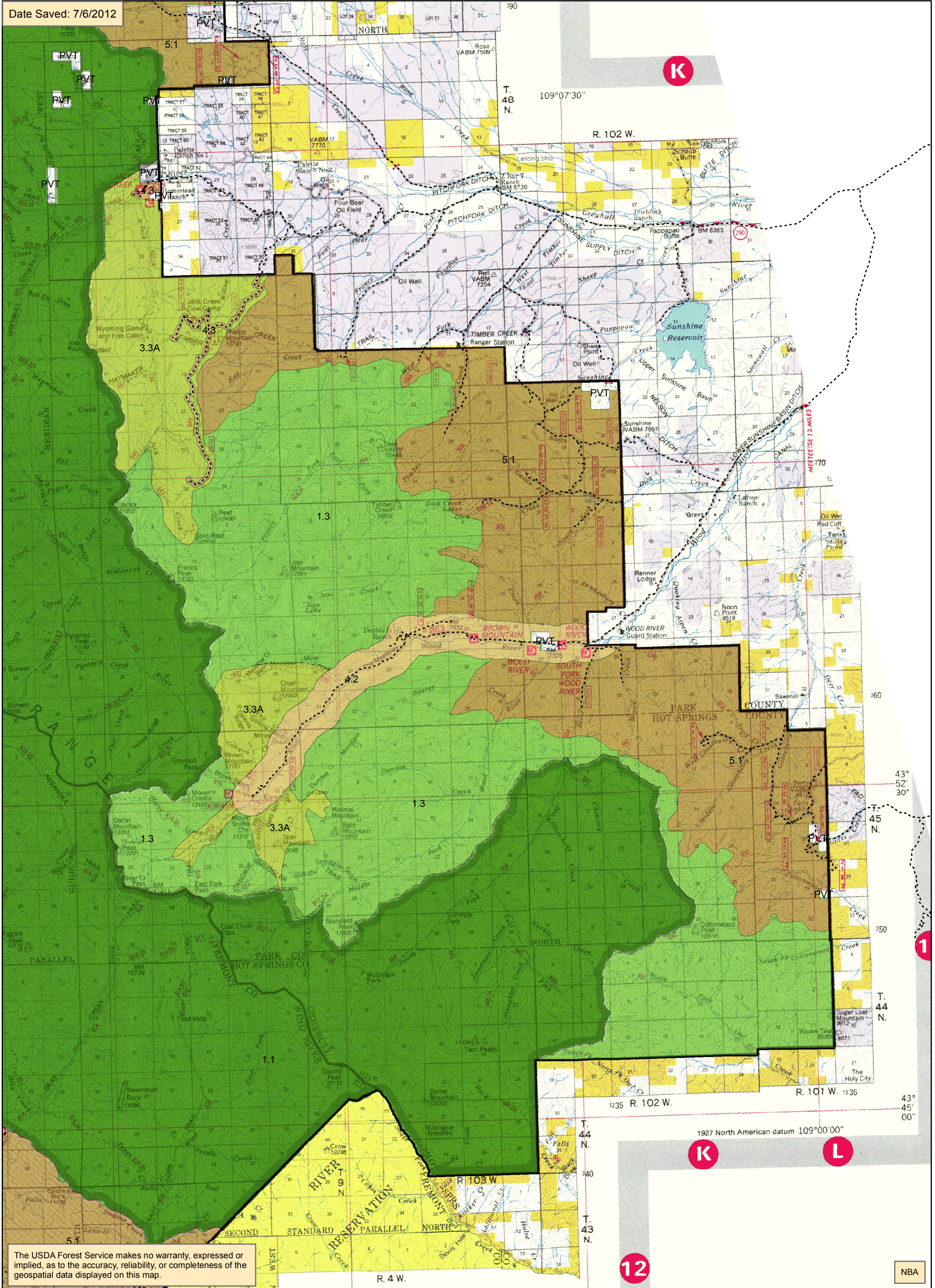
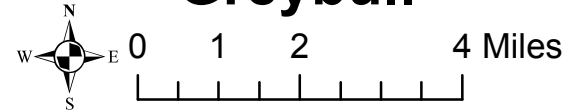
NBA

Map 6 (pg 5 of 8) alternative F management areas Greybull



Legend

- Existing Open Road
- Existing Motorized Trails
- Alt F management area**
- 1.1 Wilderness
- 1.1A Glacier Addition
- 1.3 Back Cntry NonMotorized
- 1.5A Clarks Fork Wild River
- 1.6A High Lakes WSA
- 1.6B Dunoir SMU
- 2.2A Line Creek RNA
- 3.1A Swamp Lake SIA
- 3.3A Back Cntry Motorized
- 3.3C Back Cntry Summer Motorized
- 4.2 Travel Corridor
- 4.3 Back Cntry Access Corridor
- 5.1 Mngd Forest & Rangelands
- 8.2 Ski-based Resort

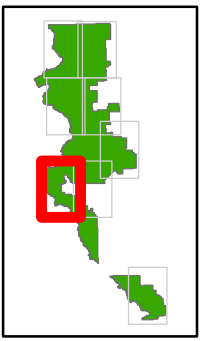


Date Saved: 7/6/2012

The USDA Forest Service makes no warranty, expressed or implied, as to the accuracy, reliability, or completeness of the geospatial data displayed on this map.

NBA

Map 6 (pg 6 of 8) alternative F management areas west Wind River

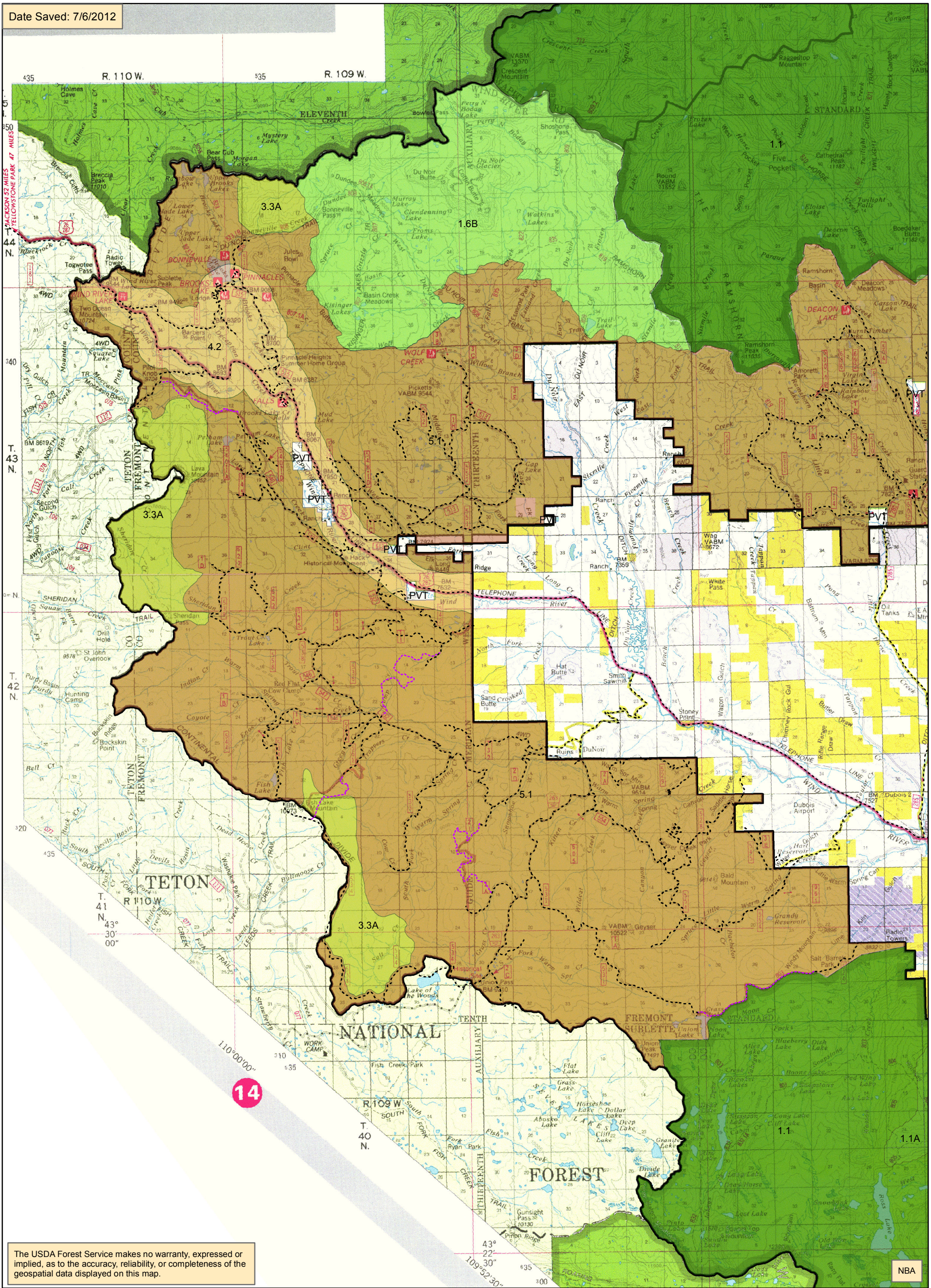


Legend

- Existing Open Road
- Existing Motorized Trails
- Alt F management area**
- 1.1 Wilderness
- 1.1A Glacier Addition
- 1.3 Back Cntry NonMotorized
- 1.5A Clarks Fork Wild River
- 1.6A High Lakes WSA
- 1.6B Dunoir SMU
- 2.2A Line Creek RNA
- 3.1A Swamp Lake SIA
- 3.3A Back Cntry Motorized
- 3.3C Back Cntry Summer Motorized
- 4.2 Travel Corridor
- 4.3 Back Cntry Access Corridor
- 5.1 Mngd Forest & Rangelands
- 8.2 Ski-based Resort



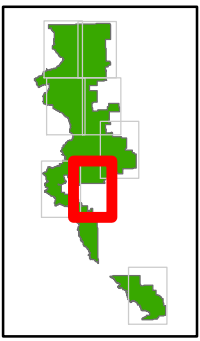
Date Saved: 7/6/2012



The USDA Forest Service makes no warranty, expressed or implied, as to the accuracy, reliability, or completeness of the geospatial data displayed on this map.

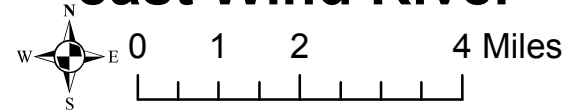
NBA

Map 6 (pg 7 of 8) alternative F management areas east Wind River

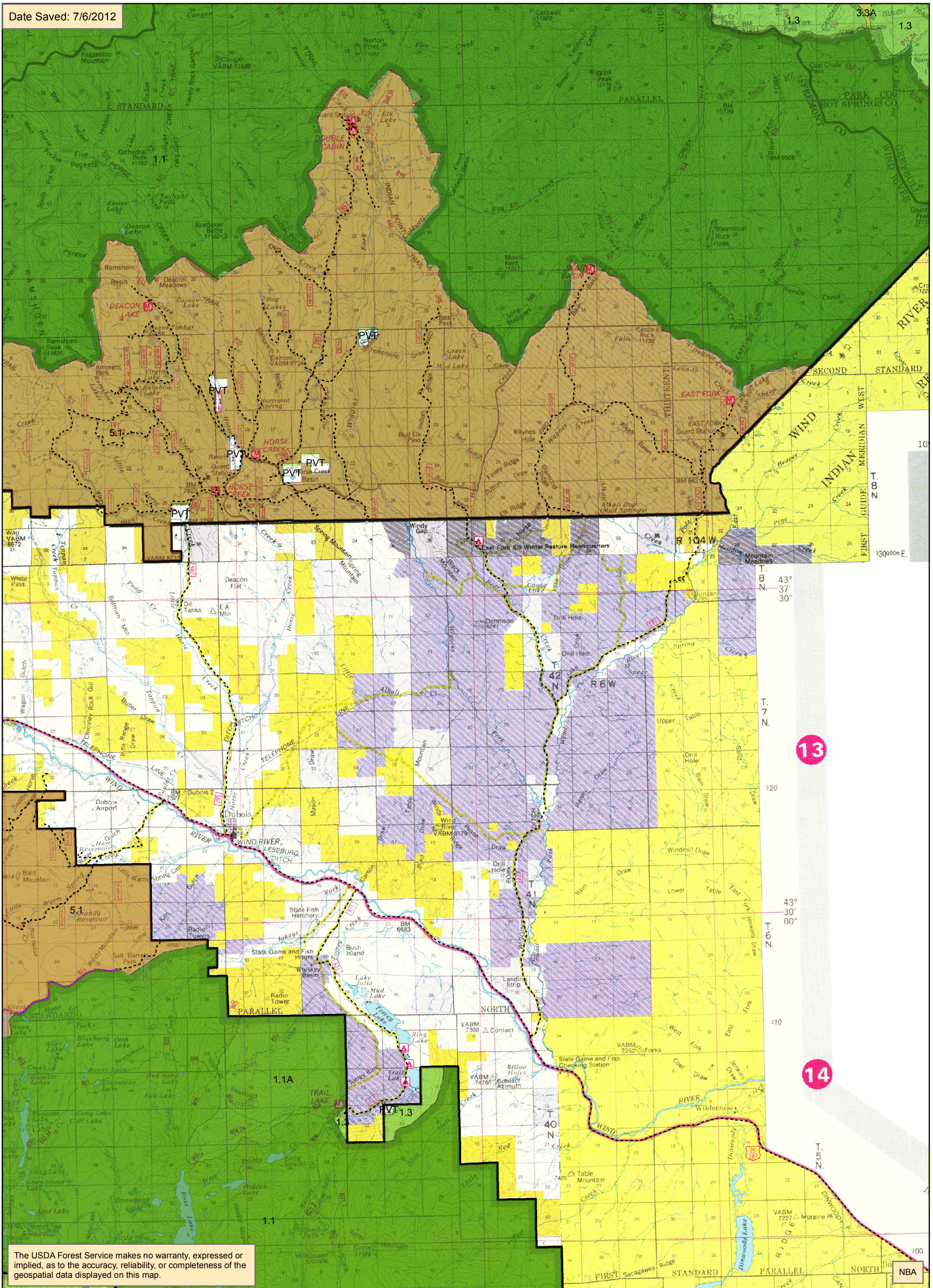


Legend

- Existing Open Road
- Existing Motorized Trails
- Alt F management area**
- 1.1 Wilderness
- 1.1A Glacier Addition
- 1.3 Back Cntry NonMotorized
- 1.5A Clarks Fork Wild River
- 1.6A High Lakes WSA
- 1.6B Dunoir SMU
- 2.2A Line Creek RNA
- 3.1A Swamp Lake SIA
- 3.3A Back Cntry Motorized
- 3.3C Back Cntry Summer Motorized
- 4.2 Travel Corridor
- 4.3 Back Cntry Access Corridor
- 5.1 Mngd Forest & Rangelands
- 8.2 Ski-based Resort

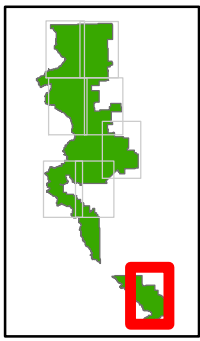


Date Saved: 7/6/2012



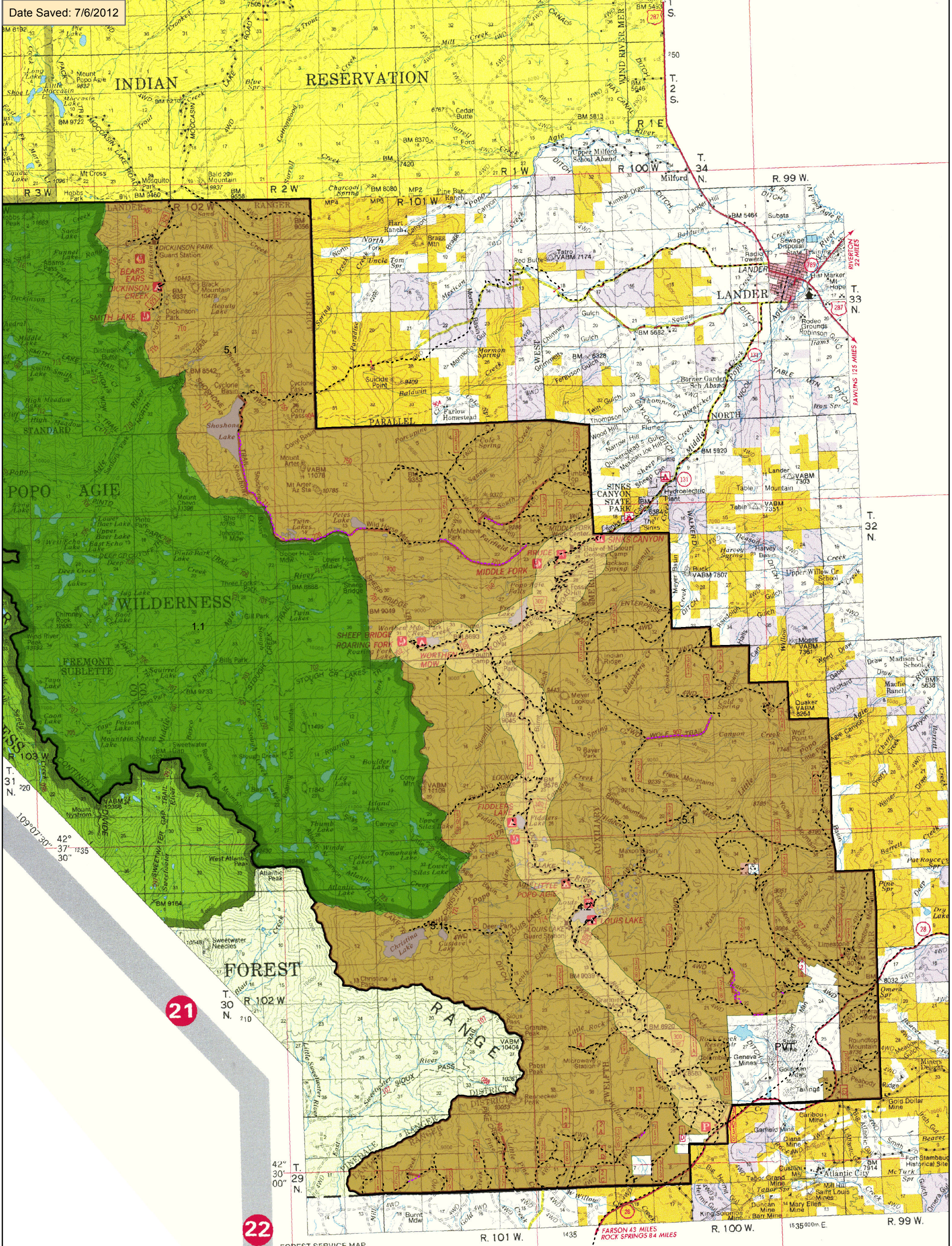
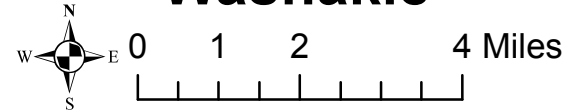
The USDA Forest Service makes no warranty, expressed or implied, as to the accuracy, reliability, or completeness of the geospatial data displayed on this map.

Map 6 (pg 8 of 8) alternative F management areas Washakie



Legend

- Existing Open Road
- Existing Motorized Trails
- Alt F management area**
- 1.1 Wilderness
- 1.1A Glacier Addition
- 1.3 Back Cntry NonMotorized
- 1.5A Clarks Fork Wild River
- 1.6A High Lakes WSA
- 1.6B Dunoir SMU
- 2.2A Line Creek RNA
- 3.1A Swamp Lake SIA
- 3.3A Back Cntry Motorized
- 3.3C Back Cntry Summer Motorized
- 4.2 Travel Corridor
- 4.3 Back Cntry Access Corridor
- 5.1 Mngd Forest & Rangelands
- 8.2 Ski-based Resort



Date Saved: 7/6/2012

42° 37' 12.35" 30"

42° 30' 00" 00"

The USDA Forest Service makes no warranty, expressed or implied, as to the accuracy, reliability, or completeness of the geospatial data displayed on this map.

FOREST SERVICE MAP
Drafted in 1988 by the Geometrics Service Center, Salt Lake City, Utah, from U.S. Forest Service Primary Base Series 7 1/2" quadrangles and U.S. Geological Survey quadrangles. Additional data and 1989 field review by the Rocky Mountain Region, Denver, Colorado.

109°00'00"

108°52'30"

Longitude west from Greenwich

108°45'00"

1927 North America

L

M

N

NBA