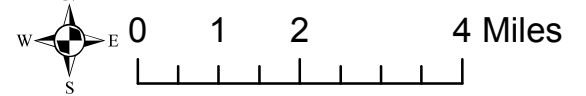


**Legend**

- Existing Open Road
- Existing Motorized Trails
- Alt C management area**
- 1.1 Wilderness
- 1.1A Glacier Addition
- 1.2 Recmnd Wilderness
- 1.2A Recmnd High Lakes Wldrns
- 1.2B Recmnd Dunoir Wldrns
- 1.3 Back Cntry NonMotorized
- 1.5A Clarks Fork Wild River
- 2.2A Line Creek RNA
- 2.3 Proposed RNA
- 3.1A Swamp Lake SIA
- 3.1B Prpsd Little Popo Agie SIA
- 3.3A Back Cntry Motorized
- 3.3B Back Cntry Winter Motorized
- 3.3C Back Cntry Summer Motorized
- 4.2 Travel Corridor
- 4.3 Back Cntry Access Corridor
- 4.5A Kirwin SIA
- 5.1 Mngd Forest & Rangelands
- 5.2 Public Water Supply
- 5.4 Mngd Big Game Crucial Winter Rng
- 8.2 Ski-based Resort

# Map 3 (pg 1 of 8) alternative C management areas west Clarks Fork



Date Saved: 7/6/2012

1

2

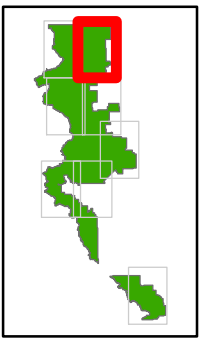
3

4

B

The USDA Forest Service makes no warranty, expressed or implied, as to the accuracy, reliability, or completeness of the geospatial data displayed on this map.

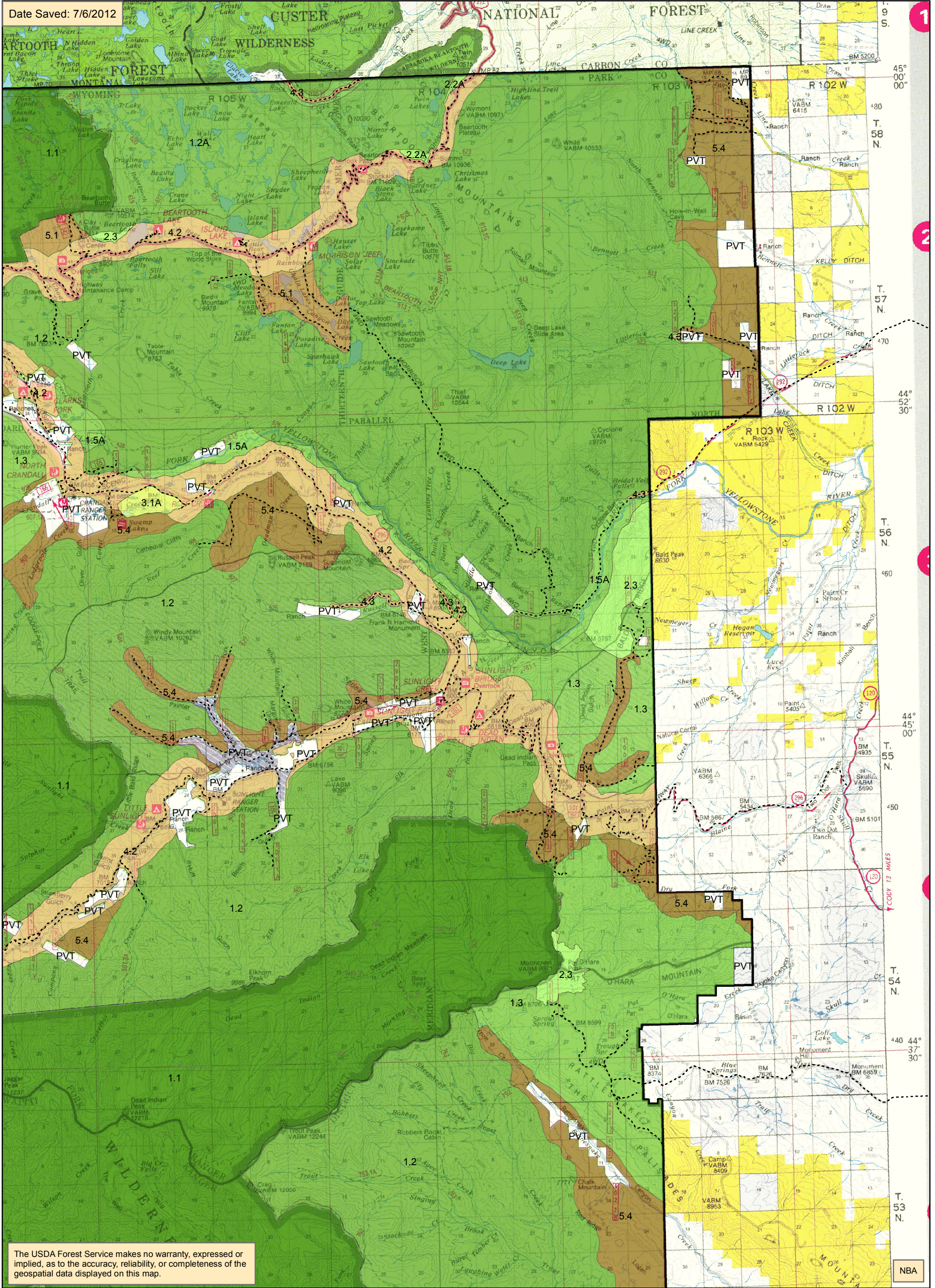
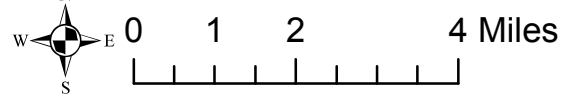
NBA



**Legend**

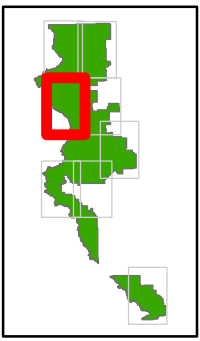
- Existing Open Road
- Existing Motorized Trails
- Alt C management area**
- 1.1 Wilderness
- 1.1A Glacier Addition
- 1.2 Recmnd Wilderness
- 1.2A Recmnd High Lakes Wldrns
- 1.2B Recmnd Dnuoir Wldrns
- 1.3 Back Cntry NonMotorized
- 1.5A Clarks Fork Wild River
- 2.2A Line Creek RNA
- 2.3 Proposed RNA
- 3.1A Swamp Lake SIA
- 3.1B Prpsd Little Popo Agie SIA
- 3.3A Back Cntry Motorized
- 3.3B Back Cntry Winter Motorized
- 3.3C Back Cntry Summer Motorized
- 4.2 Travel Corridor
- 4.3 Back Cntry Access Corridor
- 4.5A Kirwin SIA
- 5.1 Mngd Forest & Rangelands
- 5.2 Public Water Supply
- 5.4 Mngd Big Game Crucial Winter Rng
- 8.2 Ski-based Resort

# Map 3 (pg 2 of 8) alternative C management areas east Clarks Fork



The USDA Forest Service makes no warranty, expressed or implied, as to the accuracy, reliability, or completeness of the geospatial data displayed on this map.

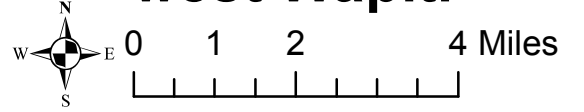
NBA



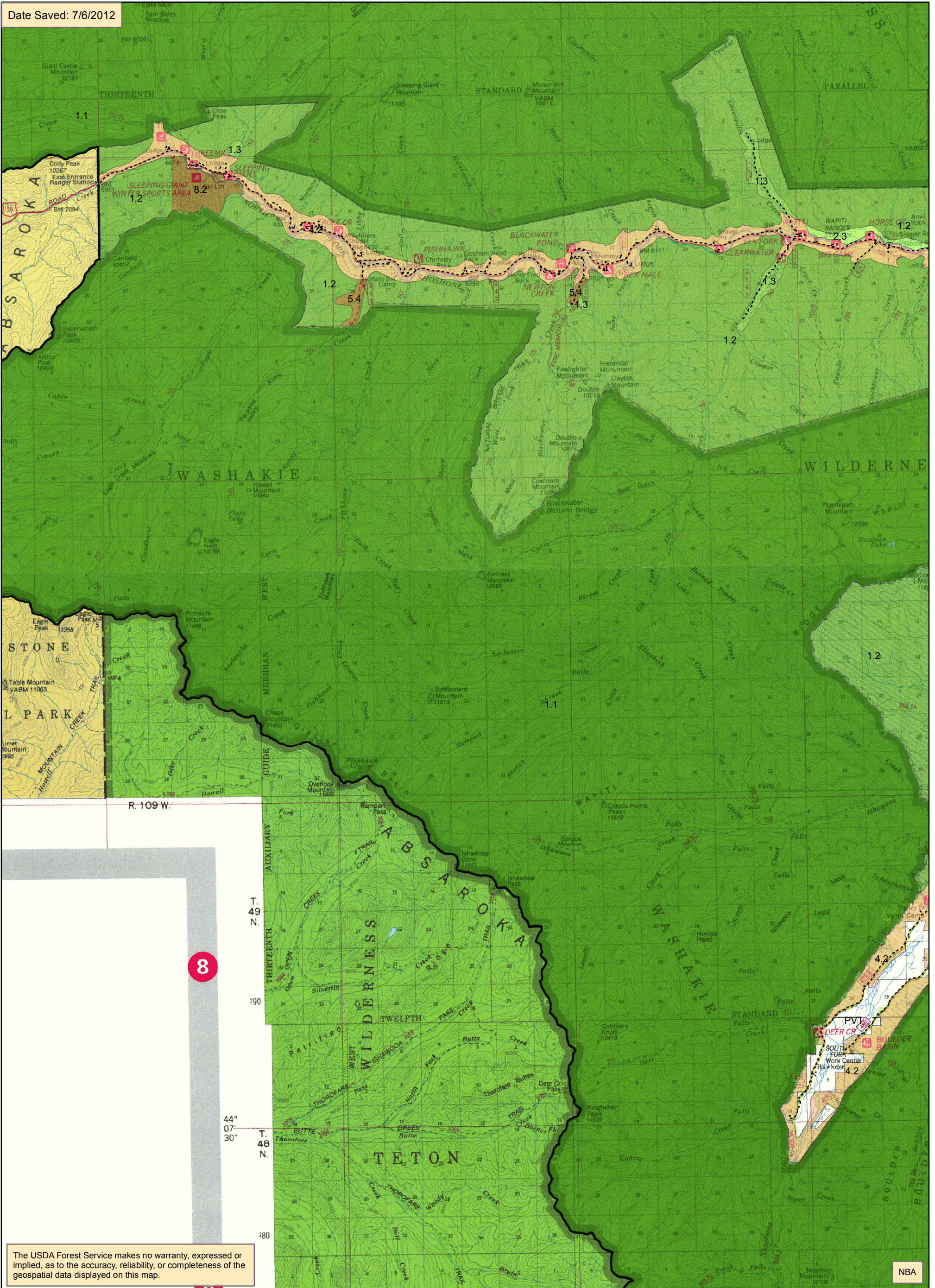
**Legend**

- Existing Open Road
- Existing Motorized Trails
- Alt C management area**
- 1.1 Wilderness
- 1.1A Glacier Addition
- 1.2 Recmnd Wilderness
- 1.2A Recmnd High Lakes Wldrns
- 1.2B Recmnd Dunoir Wldrns
- 1.3 Back Cntry NonMotorized
- 1.5A Clarks Fork Wild River
- 2.2A Line Creek RNA
- 2.3 Proposed RNA
- 3.1A Swamp Lake SIA
- 3.1B Prpsd Little Popo Agie SIA
- 3.3A Back Cntry Motorized
- 3.3B Back Cntry Winter Motorized
- 3.3C Back Cntry Summer Motorized
- 4.2 Travel Corridor
- 4.3 Back Cntry Access Corridor
- 4.5A Kirwin SIA
- 5.1 Mngd Forest & Rangelands
- 5.2 Public Water Supply
- 5.4 Mngd Big Game Crucial Winter Rng
- 8.2 Ski-based Resort

# Map 3 (pg 3 of 8) alternative C management areas west Wapiti

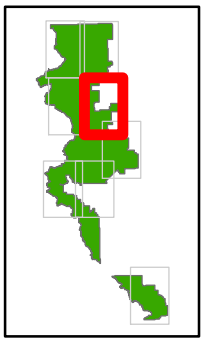


Date Saved: 7/6/2012



The USDA Forest Service makes no warranty, expressed or implied, as to the accuracy, reliability, or completeness of the geospatial data displayed on this map.

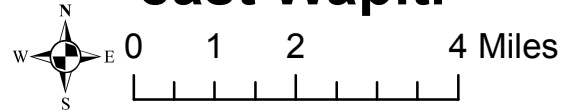
NBA



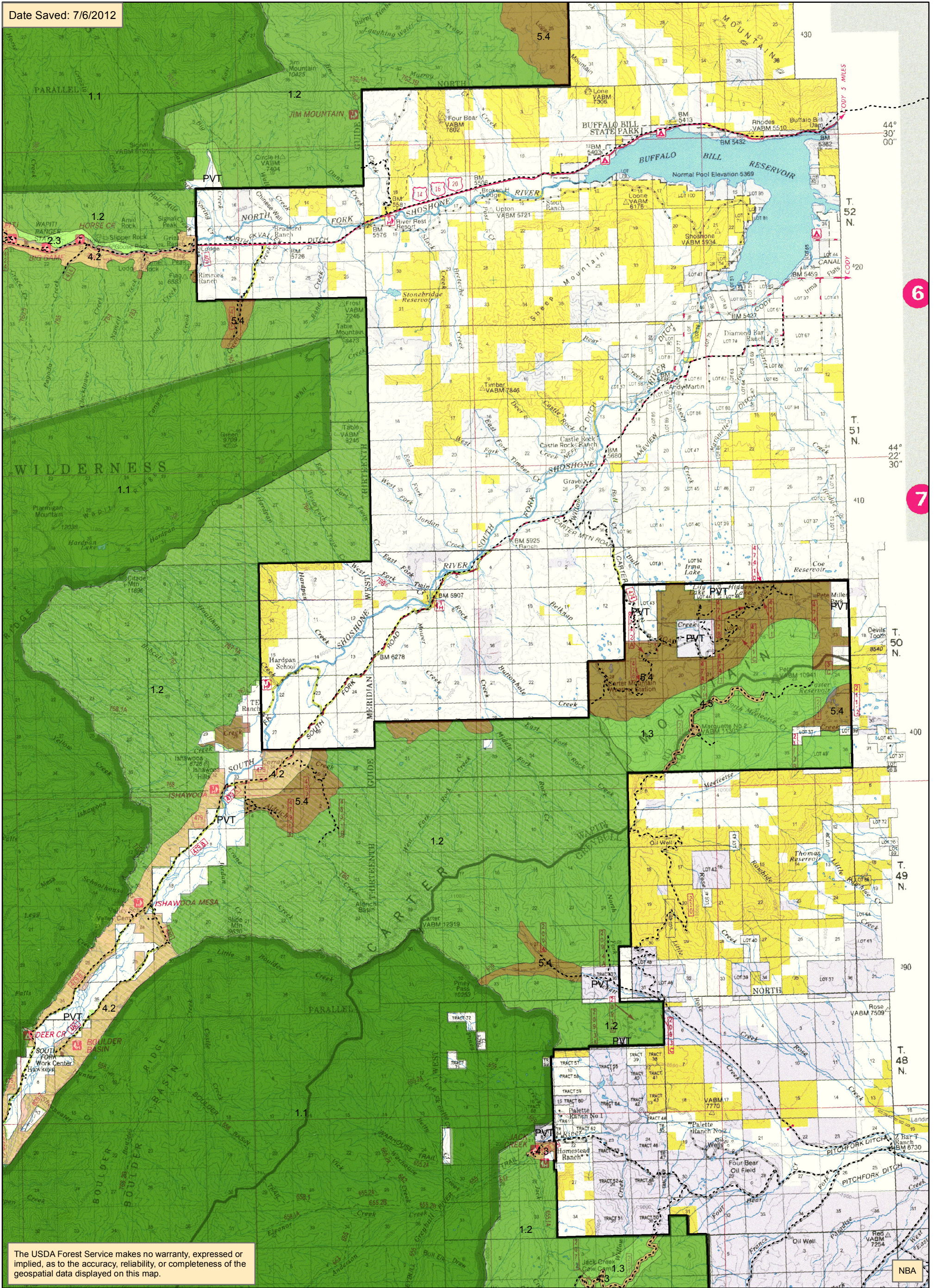
**Legend**

- Existing Open Road
- Existing Motorized Trails
- Alt C management area**
- 1.1 Wilderness
- 1.1A Glacier Addition
- 1.2 Recmnd Wilderness
- 1.2A Recmnd High Lakes Wldrns
- 1.2B Recmnd Dunoir Wldrns
- 1.3 Back Cntry NonMotorized
- 1.5A Clarks Fork Wild River
- 2.2A Line Creek RNA
- 2.3 Proposed RNA
- 3.1A Swamp Lake SIA
- 3.1B Prpsd Little Popo Agie SIA
- 3.3A Back Cntry Motorized
- 3.3B Back Cntry Winter Motorized
- 3.3C Back Cntry Summer Motorized
- 4.2 Travel Corridor
- 4.3 Back Cntry Access Corridor
- 4.5A Kirwin SIA
- 5.1 Mngd Forest & Rangelands
- 5.2 Public Water Supply
- 5.4 Mngd Big Game Crucial Winter Rng
- 8.2 Ski-based Resort

# Map 3 (pg 4 of 8) alternative C management areas east Wapiti



Date Saved: 7/6/2012

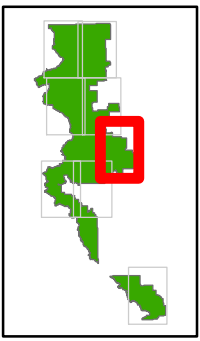


The USDA Forest Service makes no warranty, expressed or implied, as to the accuracy, reliability, or completeness of the geospatial data displayed on this map.

6

7

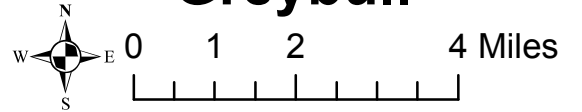
NBA



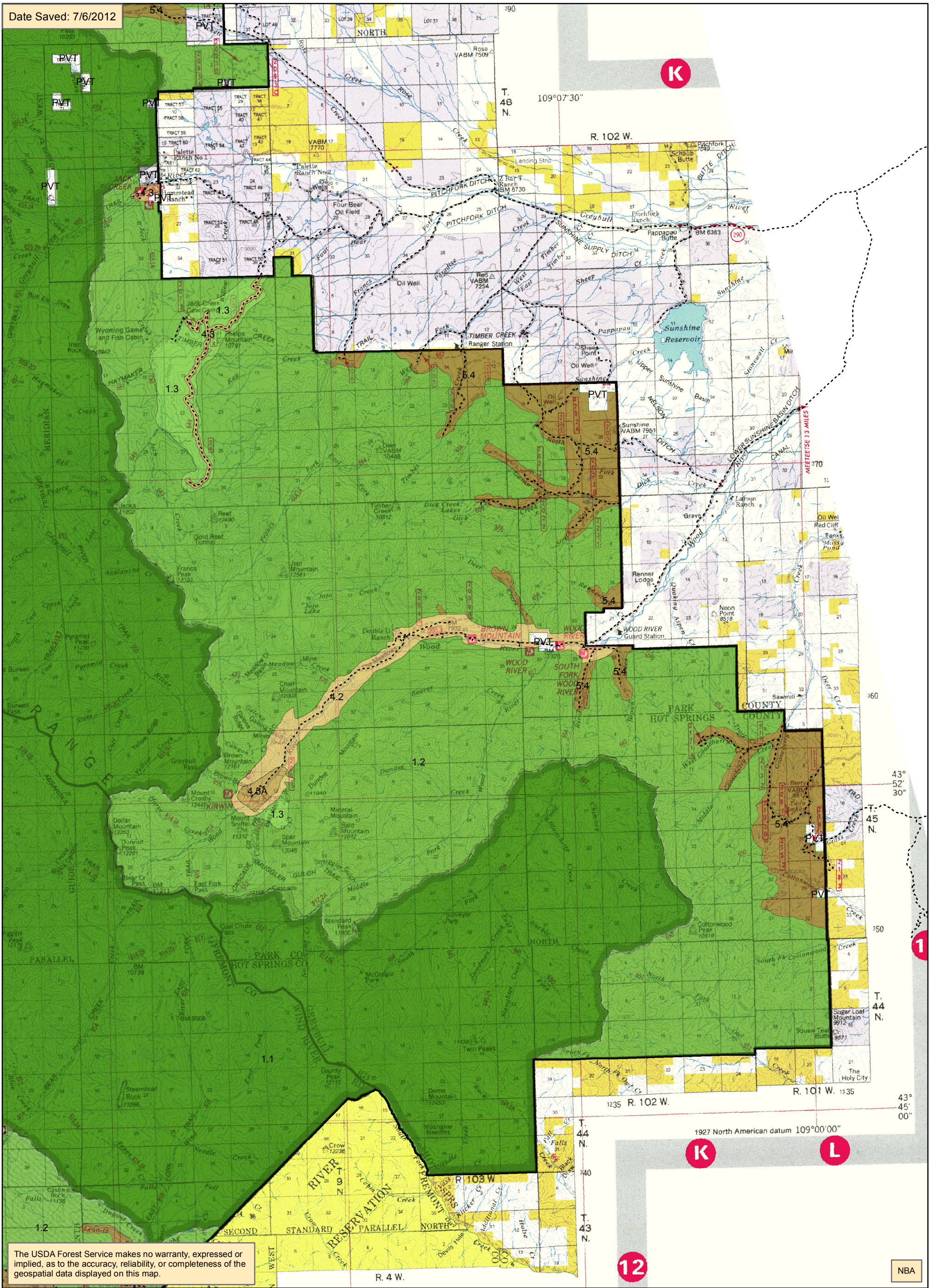
**Legend**

- Existing Open Road
- Existing Motorized Trails
- Alt C management area**
- 1.1 Wilderness
- 1.1A Glacier Addition
- 1.2 Recmnd Wilderness
- 1.2A Recmnd High Lakes Wldrns
- 1.2B Recmnd Dnuoir Wldrns
- 1.3 Back Cntry NonMotorized
- 1.5A Clarks Fork Wild River
- 2.2A Line Creek RNA
- 2.3 Proposed RNA
- 3.1A Swamp Lake SIA
- 3.1B Prpsd Little Popo Agie SIA
- 3.3A Back Cntry Motorized
- 3.3B Back Cntry Winter Motorized
- 3.3C Back Cntry Summer Motorized
- 4.2 Travel Corridor
- 4.3 Back Cntry Access Corridor
- 4.5A Kirwin SIA
- 5.1 Mngd Forest & Rangelands
- 5.2 Public Water Supply
- 5.4 Mngd Big Game Crucial Winter Rng
- 8.2 Ski-based Resort

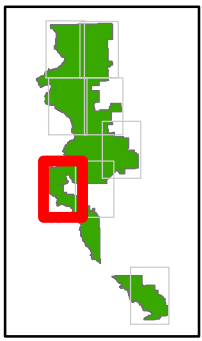
# Map 3 (pg 5 of 8) alternative C management areas Greybull



Date Saved: 7/6/2012



The USDA Forest Service makes no warranty, expressed or implied, as to the accuracy, reliability, or completeness of the geospatial data displayed on this map.



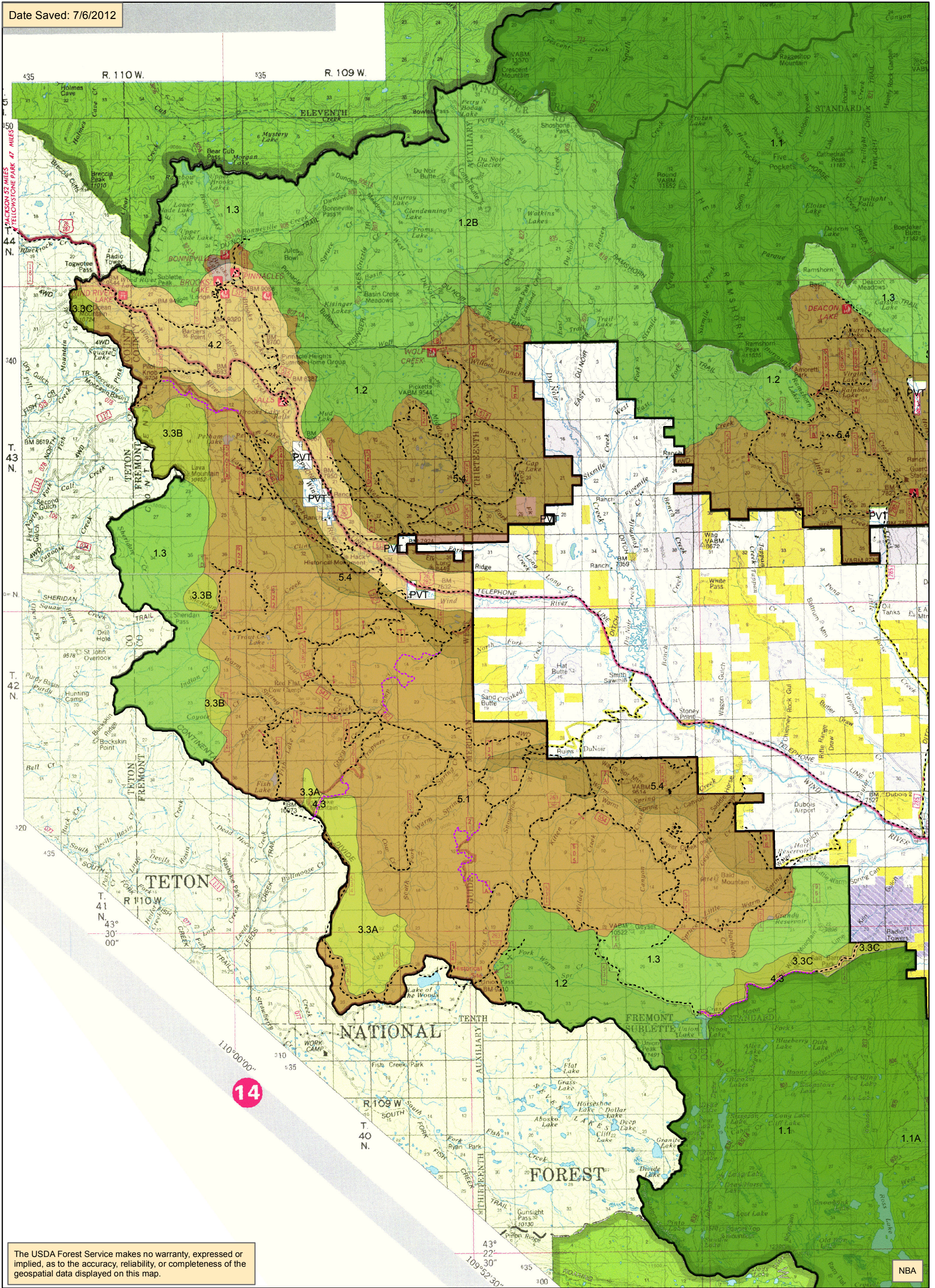
**Legend**

- Existing Open Road
- Existing Motorized Trails
- Alt C management area**
- 1.1 Wilderness
- 1.1A Glacier Addition
- 1.2 Recmnd Wilderness
- 1.2A Recmnd High Lakes Wldrns
- 1.2B Recmnd Dunoir Wldrns
- 1.3 Back Cntry NonMotorized
- 1.5A Clarks Fork Wild River
- 2.2A Line Creek RNA
- 2.3 Proposed RNA
- 3.1A Swamp Lake SIA
- 3.1B Prpsd Little Popo Agie SIA
- 3.3A Back Cntry Motorized
- 3.3B Back Cntry Winter Motorized
- 3.3C Back Cntry Summer Motorized
- 4.2 Travel Corridor
- 4.3 Back Cntry Access Corridor
- 4.5A Kirwin SIA
- 5.1 Mngd Forest & Rangelands
- 5.2 Public Water Supply
- 5.4 Mngd Big Game Crucial Winter Rng
- 8.2 Ski-based Resort

# Map 3 (pg 6 of 8) alternative C management areas west Wind River

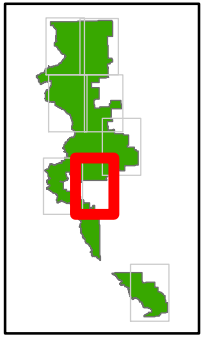


Date Saved: 7/6/2012



The USDA Forest Service makes no warranty, expressed or implied, as to the accuracy, reliability, or completeness of the geospatial data displayed on this map.

NBA



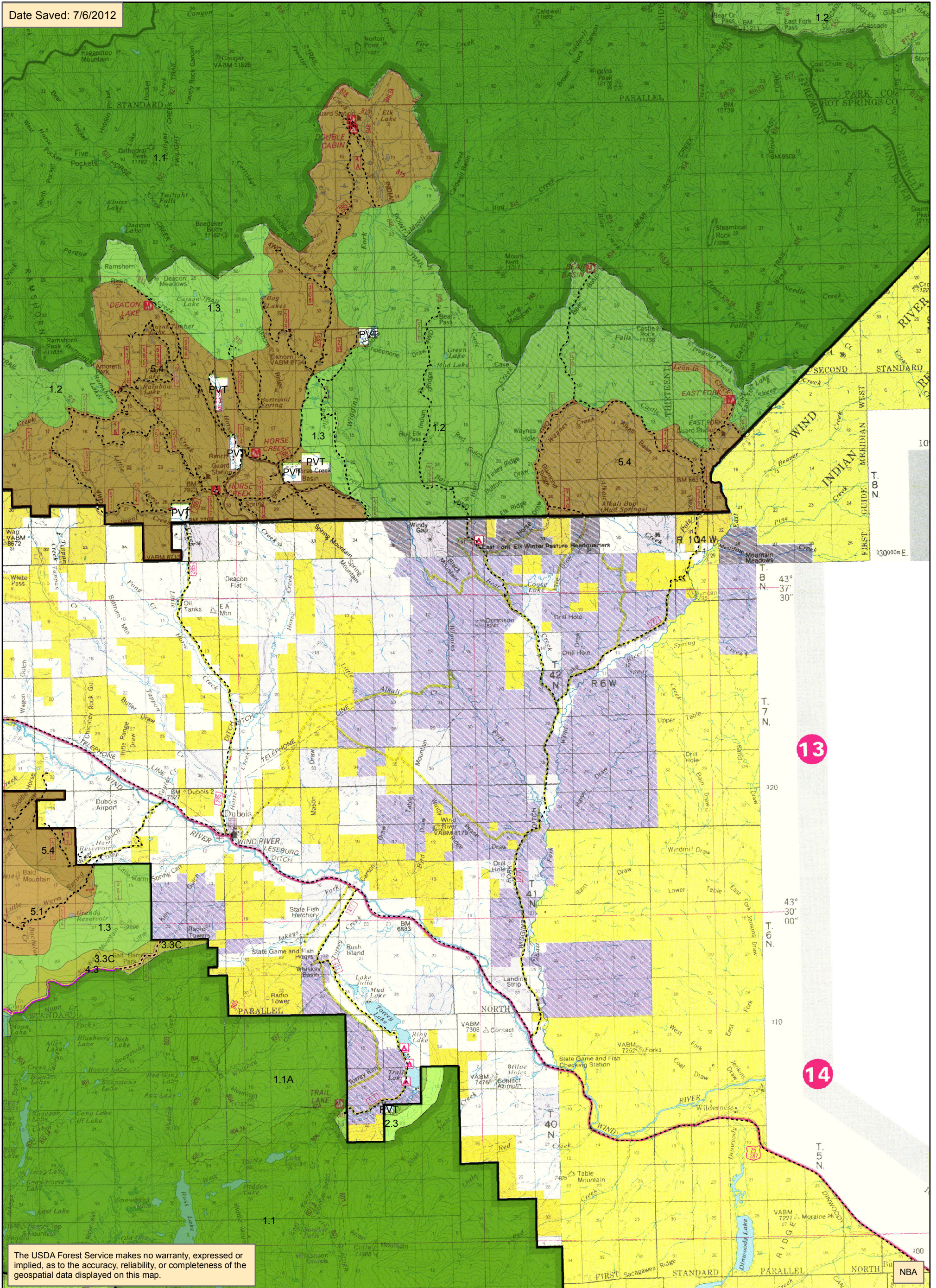
**Legend**

- Existing Open Road
- Existing Motorized Trails
- Alt C management area**
- 1.1 Wilderness
- 1.1A Glacier Addition
- 1.2 Recmnd Wilderness
- 1.2A Recmnd High Lakes Wldrns
- 1.2B Recmnd Dnuoir Wldrns
- 1.3 Back Cntry NonMotorized
- 1.5A Clarks Fork Wild River
- 2.2A Line Creek RNA
- 2.3 Proposed RNA
- 3.1A Swamp Lake SIA
- 3.1B Prpsd Little Popo Agie SIA
- 3.3A Back Cntry Motorized
- 3.3B Back Cntry Winter Motorized
- 3.3C Back Cntry Summer Motorized
- 4.2 Travel Corridor
- 4.3 Back Cntry Access Corridor
- 4.5A Kirwin SIA
- 5.1 Mngd Forest & Rangelands
- 5.2 Public Water Supply
- 5.4 Mngd Big Game Crucial Winter Rng
- 8.2 Ski-based Resort

# Map 3 (pg 7 of 8) alternative C management areas east Wind River

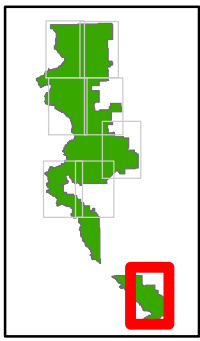


Date Saved: 7/6/2012



The USDA Forest Service makes no warranty, expressed or implied, as to the accuracy, reliability, or completeness of the geospatial data displayed on this map.

NBA



**Legend**

--- Existing Open Road

--- Existing Motorized Trails

**Alt C**

**management area**

1.1 Wilderness

1.1A Glacier Addition

1.2 Recmnd Wilderness

1.2A Recmnd High Lakes Wldrns

1.2B Recmnd Dnuoir Wldrns

1.3 Back Cntry NonMotorized

1.5A Clarks Fork Wild River

2.2A Line Creek RNA

2.3 Proposed RNA

3.1A Swamp Lake SIA

3.1B Prpsd Little Popo Agie SIA

3.3A Back Cntry Motorized

3.3B Back Cntry Winter Motorized

3.3C Back Cntry Summer Motorized

4.2 Travel Corridor

4.3 Back Cntry Access Corridor

4.5A Kirwin SIA

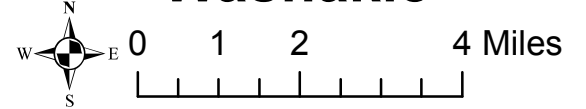
5.1 Mngd Forest & Rangelands

5.2 Public Water Supply

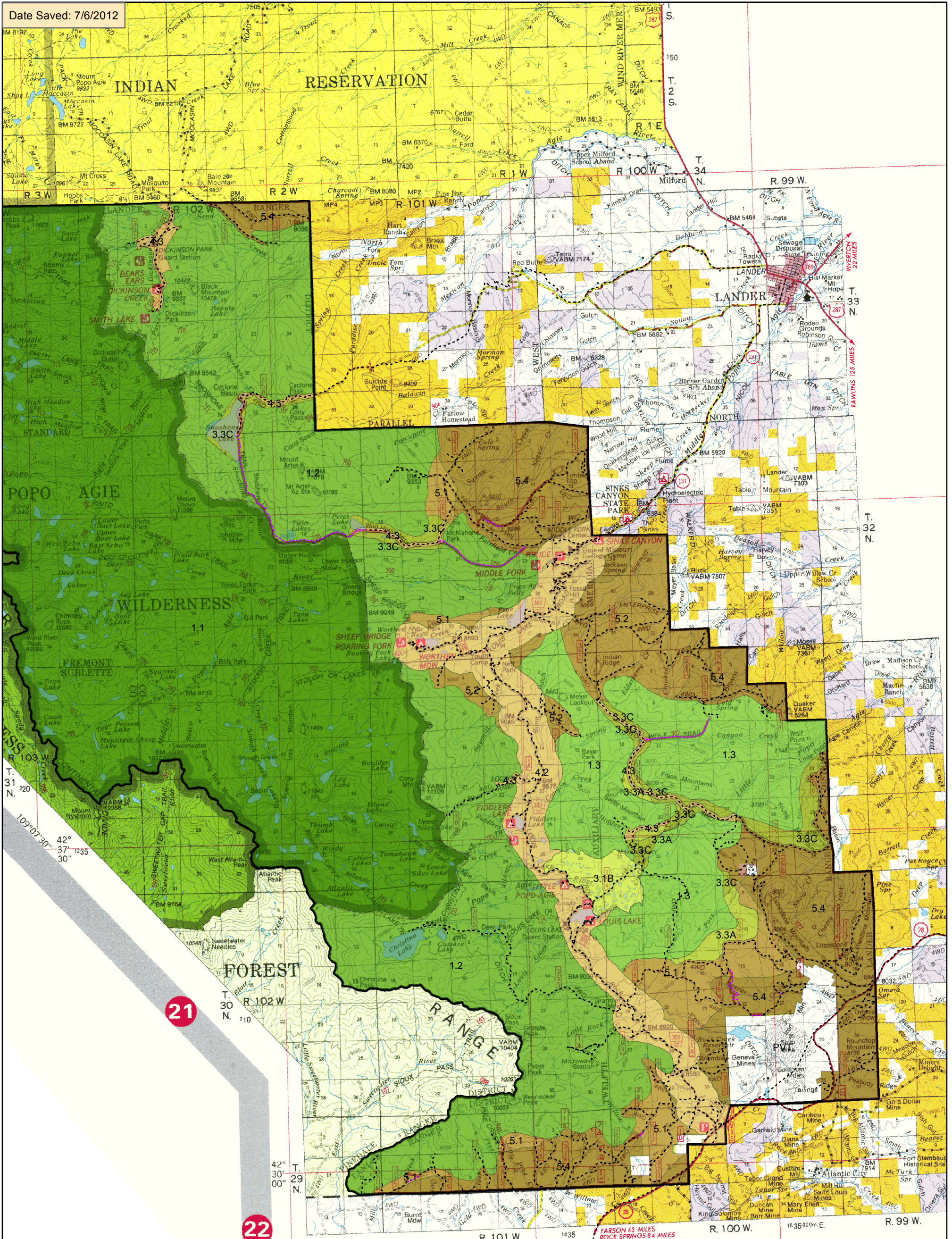
5.4 Mngd Big Game Crucial Winter Rng

8.2 Ski-based Resort

# Map 3 (pg 8 of 8) alternative C management areas Washakie



Date Saved: 7/6/2012



21

22

FOREST SERVICE MAP  
Drafted in 1988 by the Geometrics Service Center, Salt Lake City, Utah, from U.S. Forest Service Primary Base Series 7 1/2' quadrangles and U.S. Geological Survey quadrangles. Additional data and 1989 field review by the Rocky Mountain Region, Denver, Colorado.

The USDA Forest Service makes no warranty, expressed or implied, as to the accuracy, reliability, or completeness of the geospatial data displayed on this map.

109°00'00"

R. 101 W.

108°52'30"

Longitude west from Greenwich

108°45'00"

1927 North Am

L

M

N

NBA