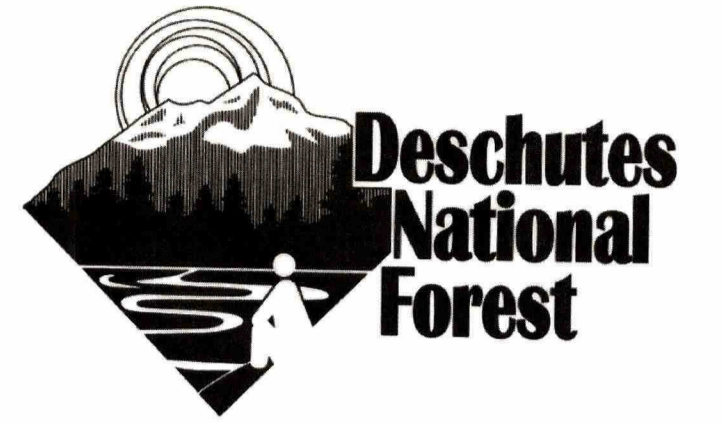


Areas of Concern and Opportunity

Newberry National Volcanic Monument
Final Environmental Impact Statement

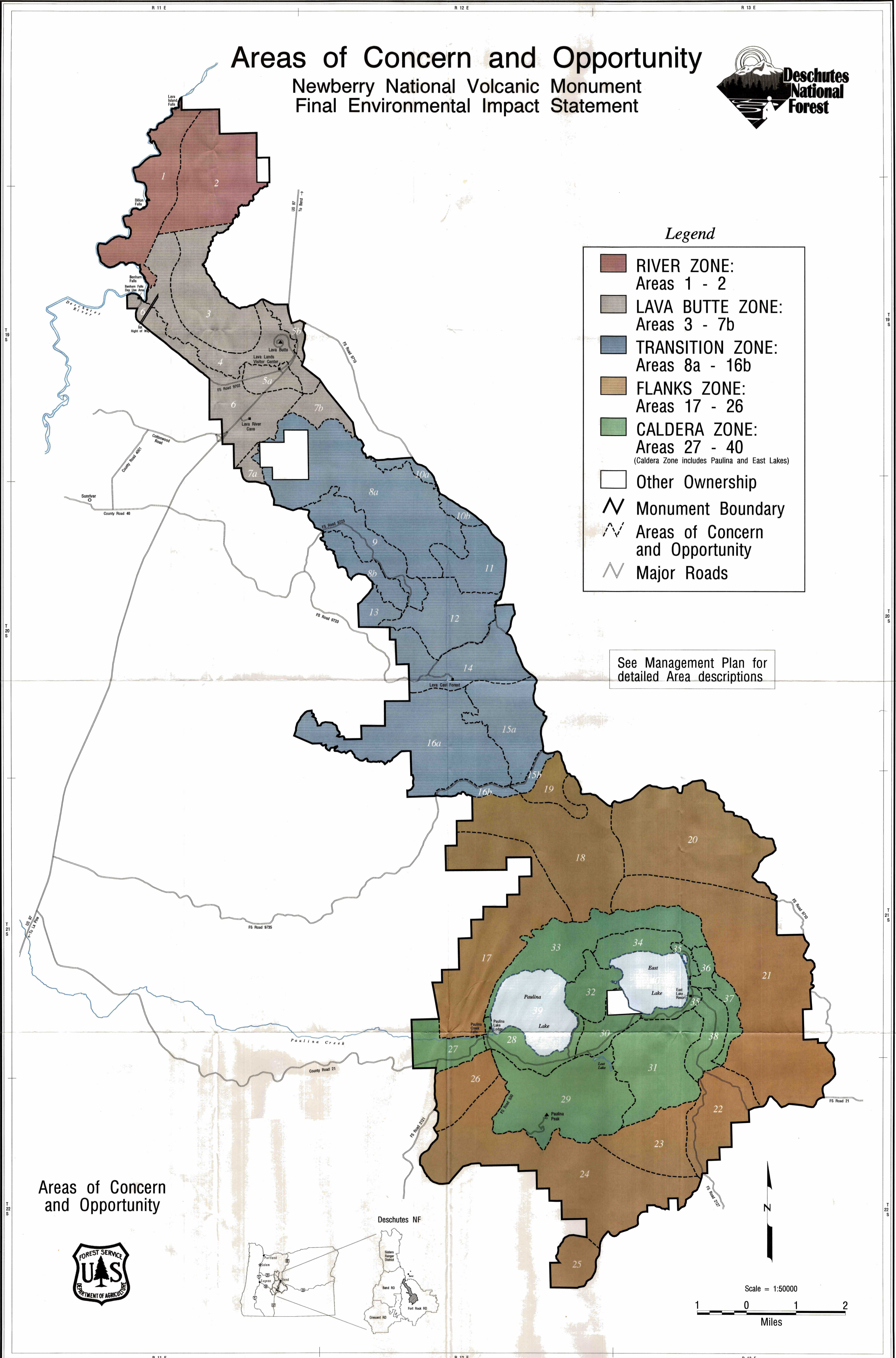
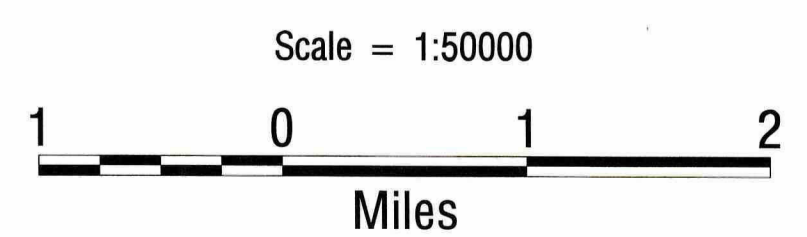
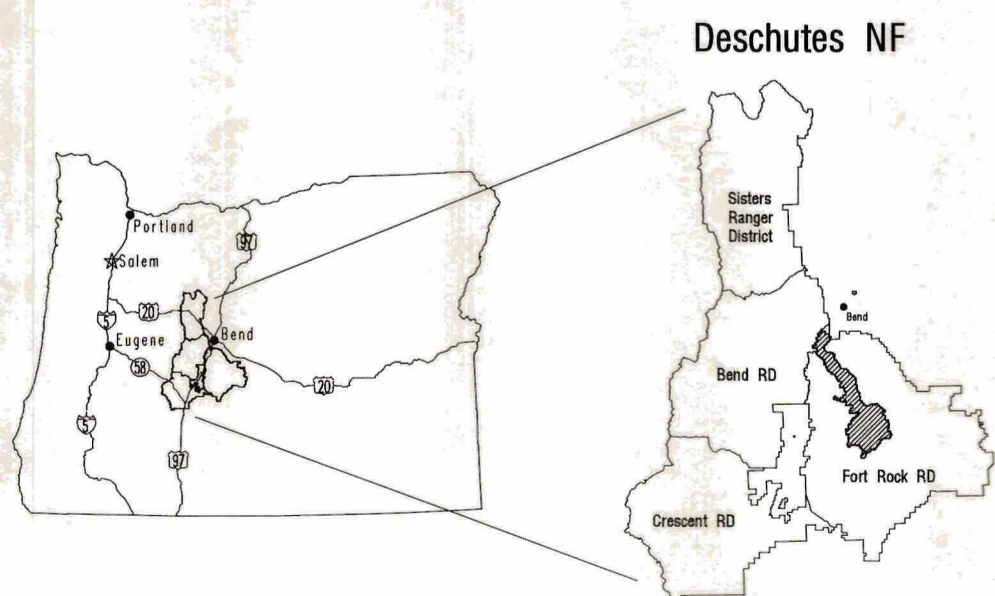


Legend

- RIVER ZONE:
Areas 1 - 2
- LAVA BUTTE ZONE:
Areas 3 - 7b
- TRANSITION ZONE:
Areas 8a - 16b
- FLANKS ZONE:
Areas 17 - 26
- CALDERA ZONE:
Areas 27 - 40
(Caldera Zone includes Paulina and East Lakes)
- Other Ownership
- Monument Boundary
- Areas of Concern and Opportunity
- Major Roads

See Management Plan for detailed Area descriptions

Areas of Concern and Opportunity

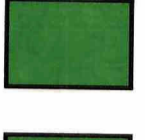
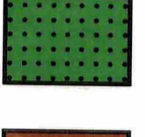

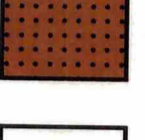



Forest Mortality

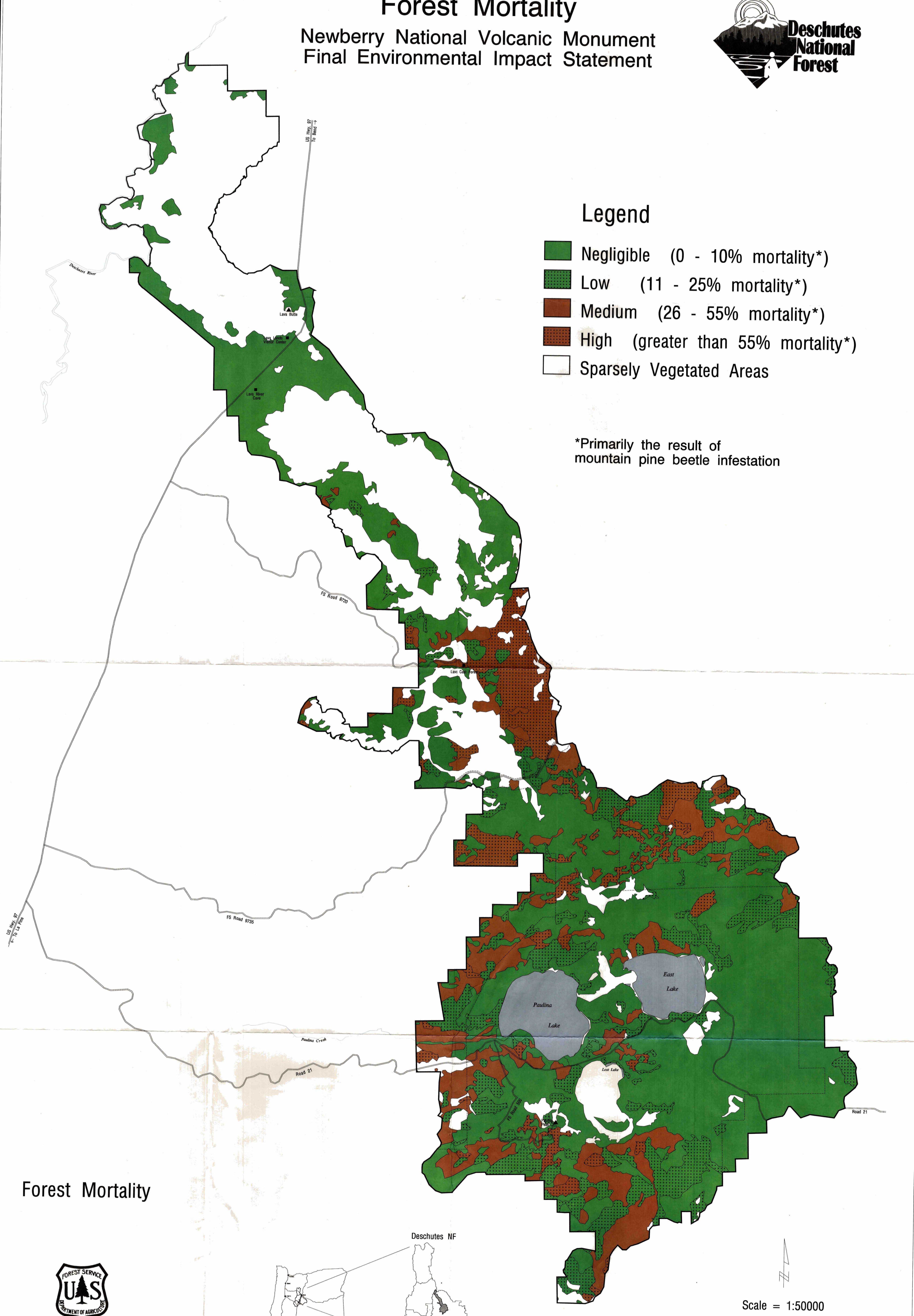
Newberry National Volcanic Monument Final Environmental Impact Statement



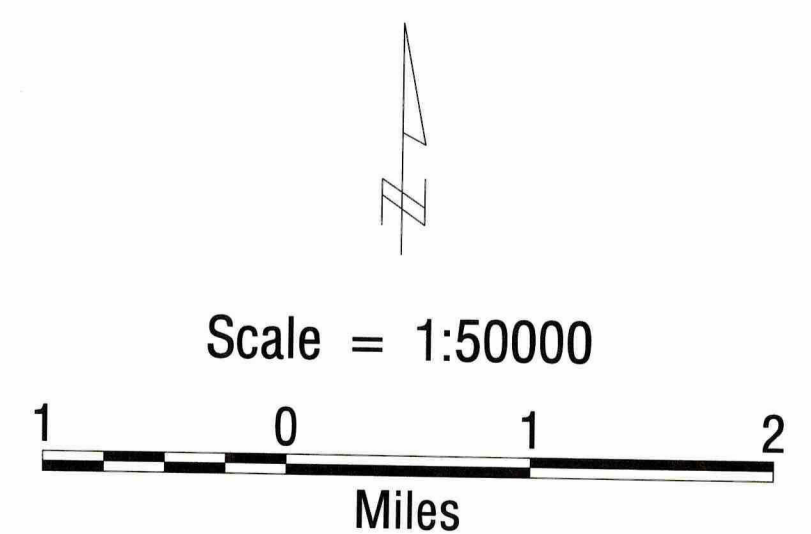
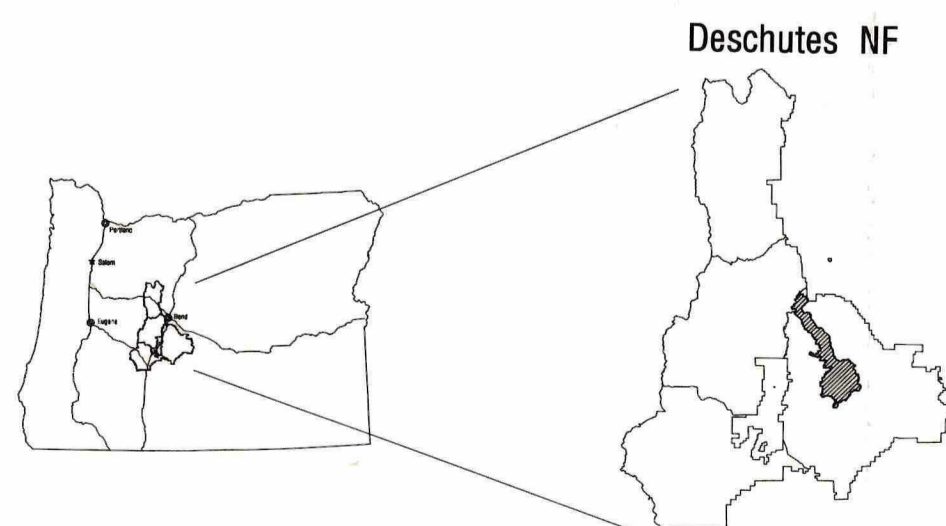
Legend

-  Negligible (0 - 10% mortality*)
-  Low (11 - 25% mortality*)
-  Medium (26 - 55% mortality*)
-  High (greater than 55% mortality*)
-  Sparsely Vegetated Areas

*Primarily the result of mountain pine beetle infestation



Forest Mortality



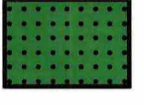

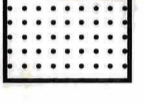



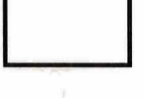


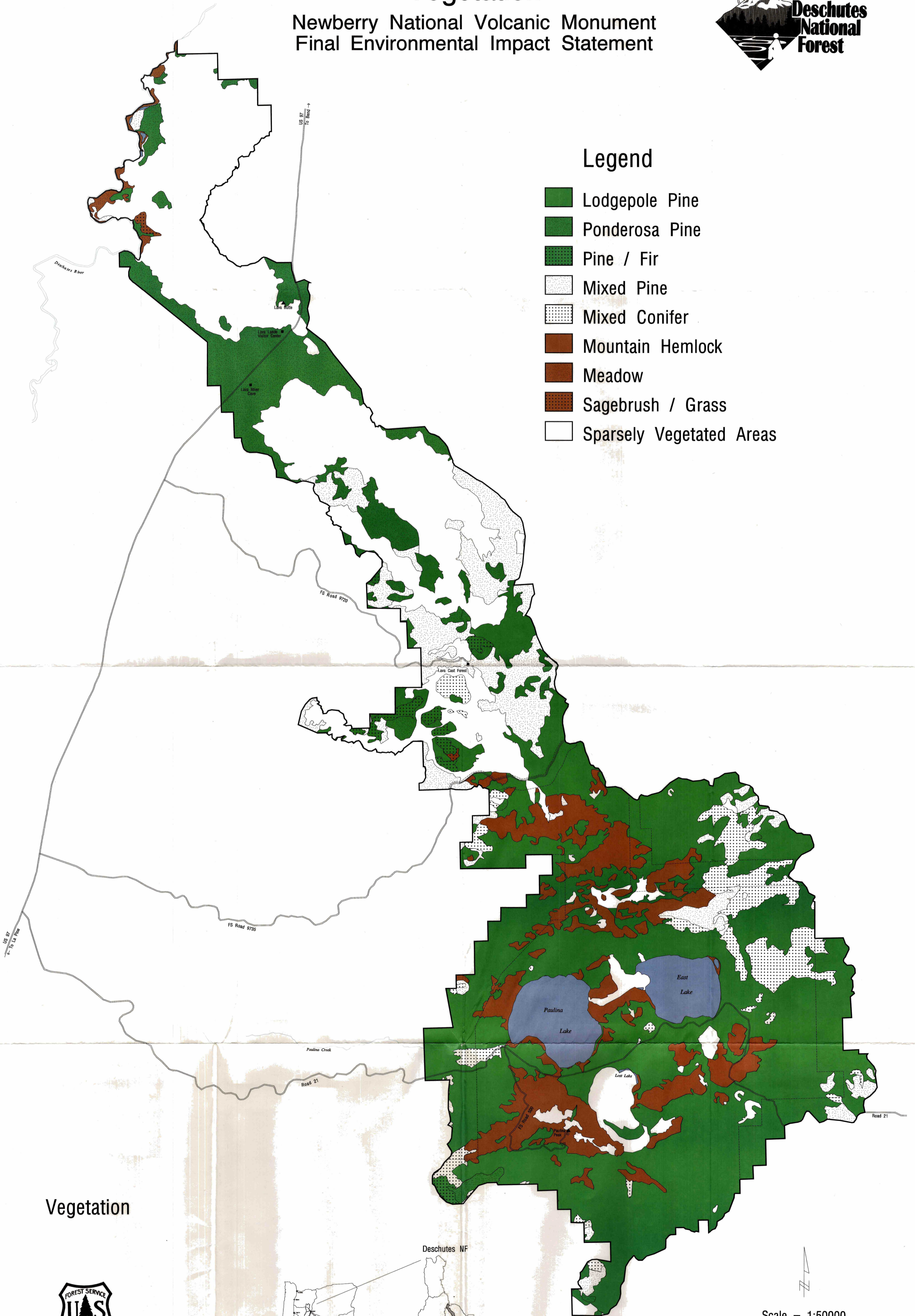
Vegetation

Newberry National Volcanic Monument Final Environmental Impact Statement



Legend

-  Lodgepole Pine
-  Ponderosa Pine
-  Pine / Fir
-  Mixed Pine
-  Mixed Conifer
-  Mountain Hemlock
-  Meadow
-  Sagebrush / Grass
-  Sparsely Vegetated Areas



Vegetation

