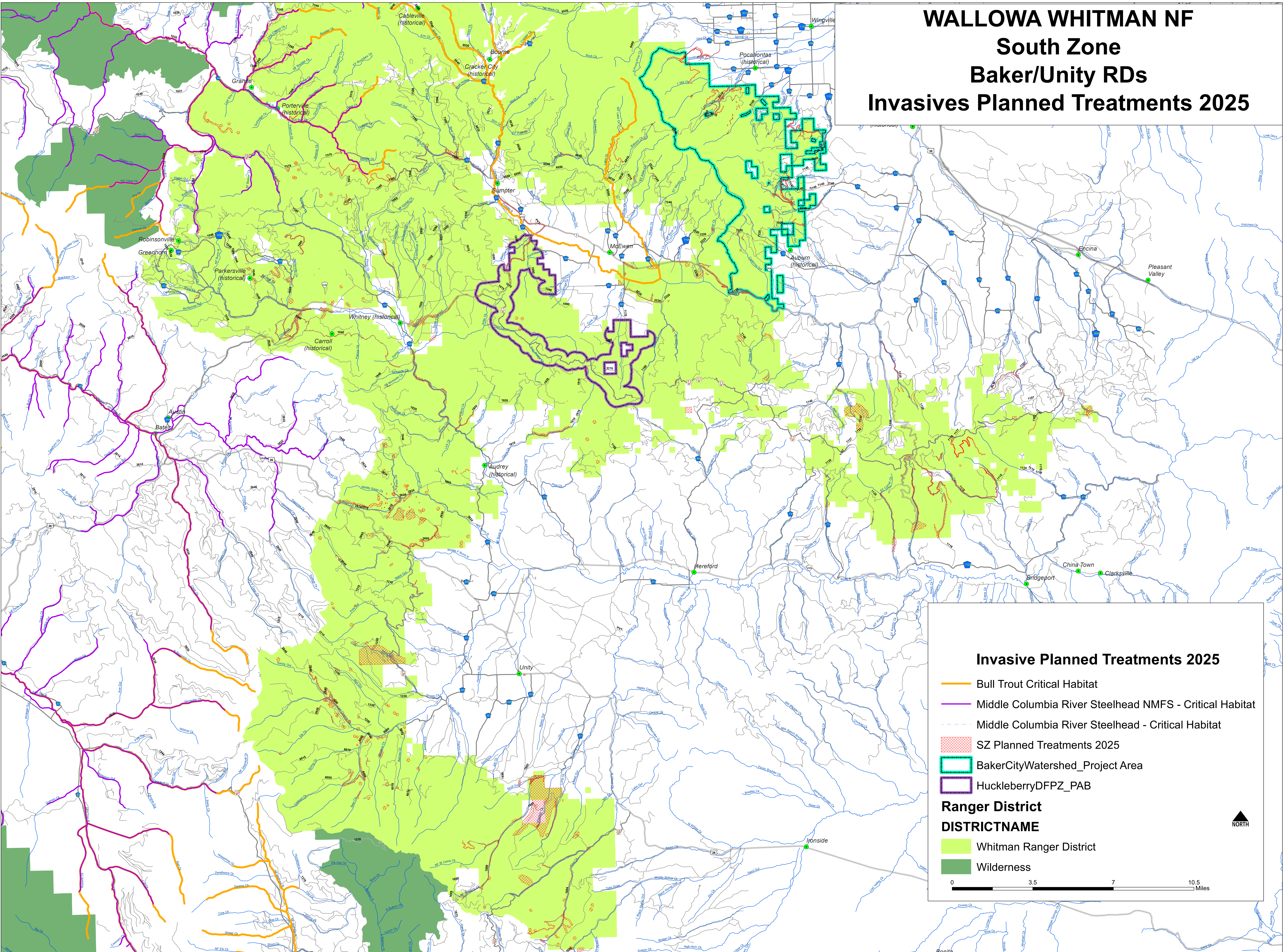


# WALLOWA WHITMAN NF

## South Zone

### Baker/Unity RDs

### Invasives Planned Treatments 2025



**Invasive Planned Treatments 2025**

- Bull Trout Critical Habitat
- Middle Columbia River Steelhead NMFS - Critical Habitat
- - - Middle Columbia River Steelhead - Critical Habitat
- SZ Planned Treatments 2025
- BakerCityWatershed\_Project Area
- HuckleberryDFPZ\_PAB

**Ranger District**

**DISTRICTNAME**

- Whitman Ranger District
- Wilderness

0 3.5 7 10.5 Miles

▲ NORTH