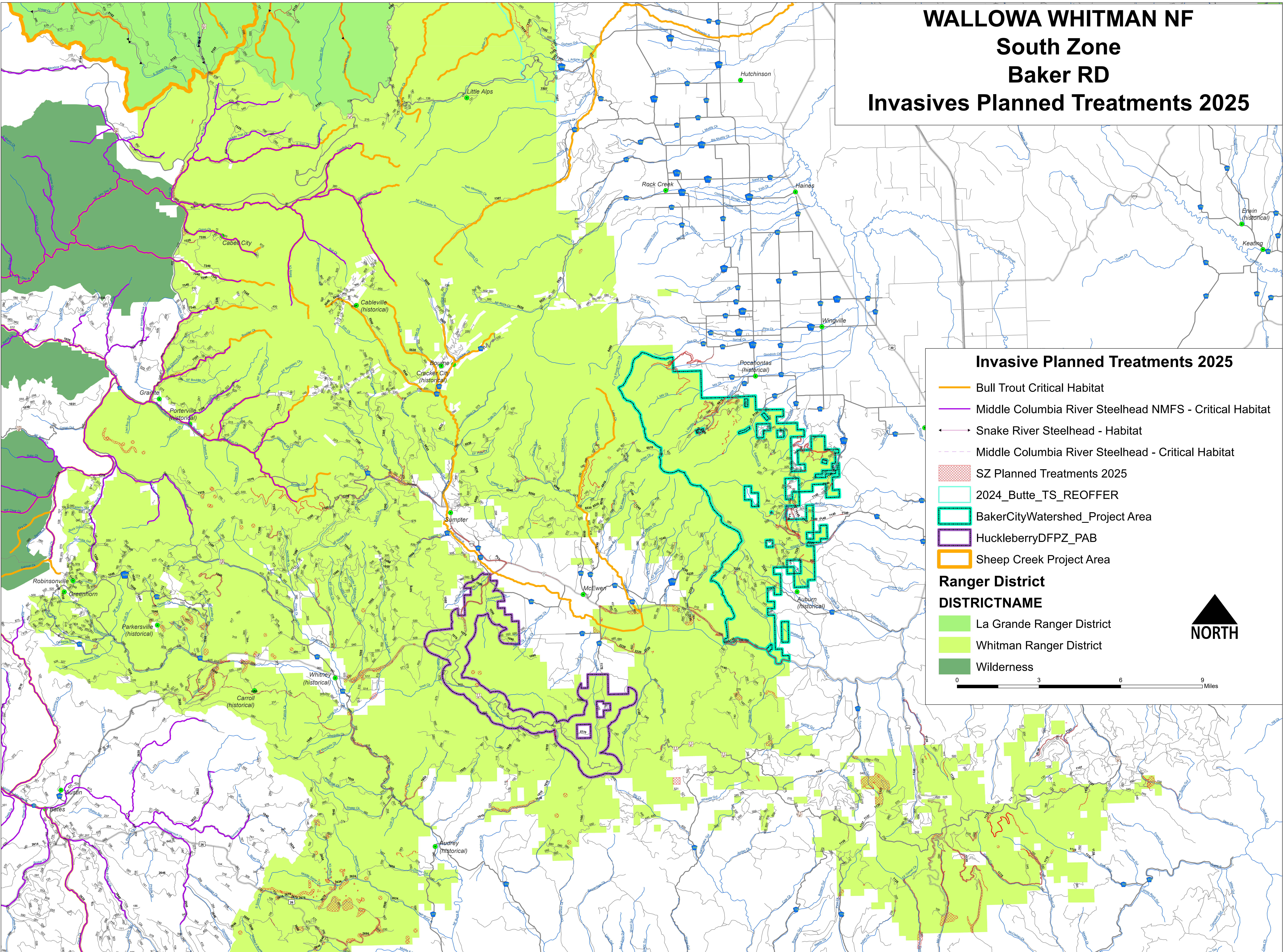


WALLOWA WHITMAN NF

South Zone

Baker RD

Invasives Planned Treatments 2025



Invasive Planned Treatments 2025

- Bull Trout Critical Habitat
- Middle Columbia River Steelhead NMFS - Critical Habitat
- Snake River Steelhead - Habitat
- Middle Columbia River Steelhead - Critical Habitat
- SZ Planned Treatments 2025
- 2024_Butte_TS_REOFFER
- BakerCityWatershed_Project Area
- HuckleberryDFPZ_PAB
- Sheep Creek Project Area

Ranger District

DISTRICTNAME

- La Grande Ranger District
- Whitman Ranger District
- Wilderness

NORTH

0 3 6 9 Miles