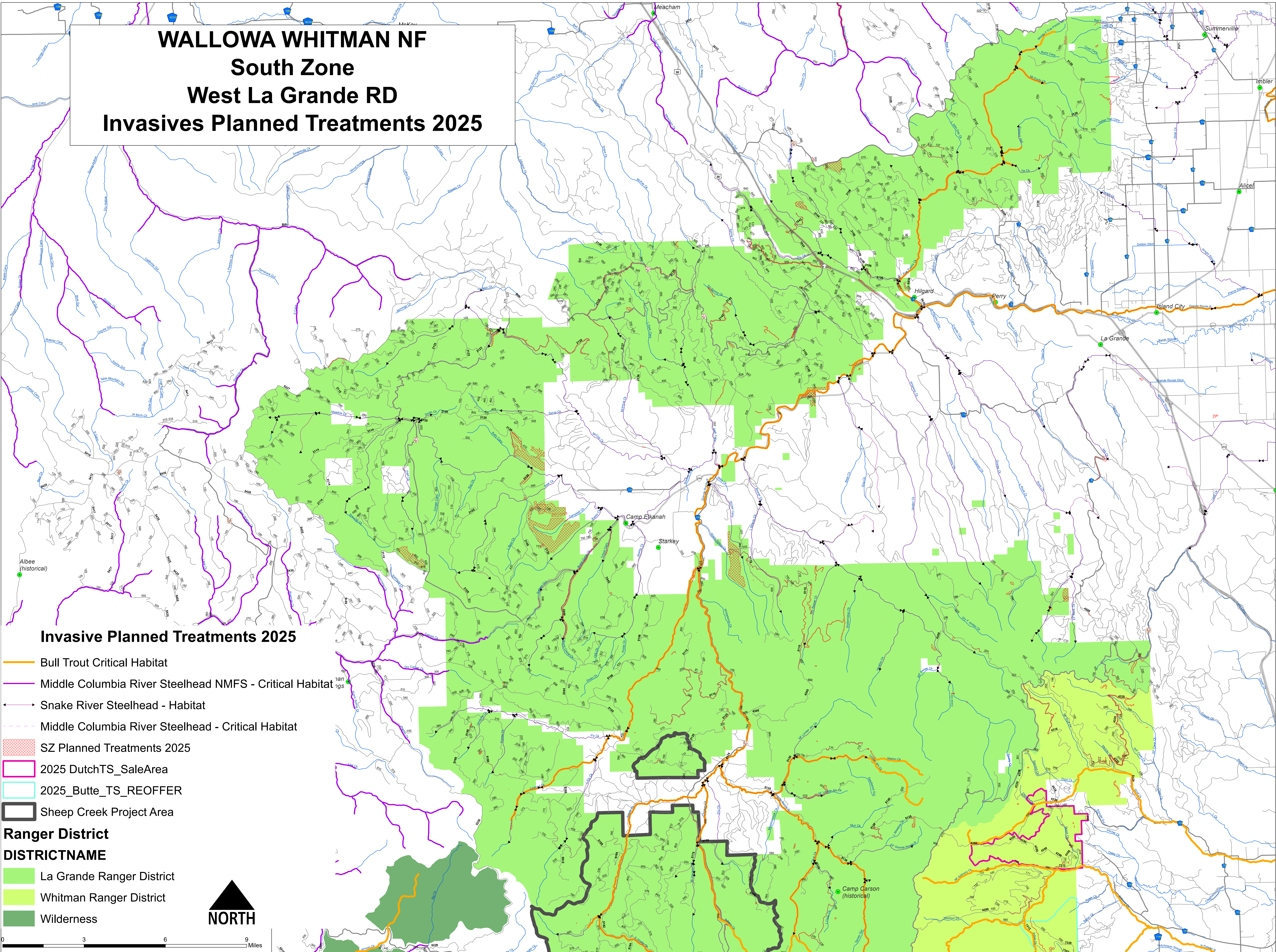


WALLOWA WHITMAN NF

South Zone

West La Grande RD

Invasives Planned Treatments 2025



Invasive Planned Treatments 2025

- Bull Trout Critical Habitat
- Middle Columbia River Steelhead NMFS - Critical Habitat
- Snake River Steelhead - Habitat
- Middle Columbia River Steelhead - Critical Habitat
- SZ Planned Treatments 2025
- 2025 DutchTS_SaleArea
- 2025_Butte_TS_REOFFER
- Sheep Creek Project Area

Ranger District

- DISTRICTNAME**
- La Grande Ranger District
 - Whitman Ranger District
 - Wilderness

