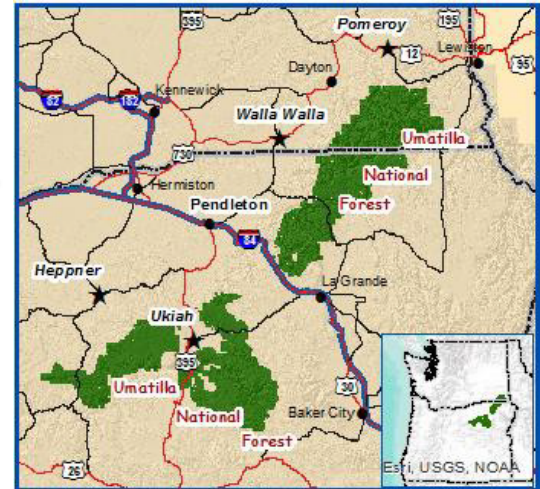


**USDA Forest Service
Pacific Northwest Region
Outreach Notice Phase 3**



**Umatilla National Forest
MULTIPLE Vacancy Announcements
Application Period is April 4th to April
24th, 2025**



Phase 3 Permanent Fire Positions

The **Umatilla National Forest** will soon be filling multiple positions (listed in the table below) with duty locations of **Heppner, Oregon; Ukiah, Oregon; Walla Walla, Washington; and Pomeroy, Washington**. This notification is being circulated to inform interested applicants of upcoming opportunities. Please see the following information on the positions that may be filled on the Umatilla National Forest. When applying to this announcement, please apply to the specific location(s) being offered and correct announcement number at <https://www.usajobs.gov/>.

*****APPLICATION PERIOD FOR THE FOLLOWING POSITIONS*****

The announcement period to apply for these positions is **April 4th – April 24th, 2025**. The table below provides more detailed information about each of these positions. Current vacancies within the Umatilla National Forest have been identified in this outreach; however, you are encouraged to review all positions and duty locations (either currently vacant or encumbered), and contact individuals listed for more information on any position you are interested in. This Fire Hire Event does not utilize a backfill process and as such vacancies created during the event will not be immediately filled. Relocation incentives, recruitment incentives, and Transfer of Station are not available for any of the positions in this phase.

Listing of positions the Umatilla National Forest may fill during PHASE 3 of permanent fire hire. Please reach out to the contacts listed below if you are interested in one of these positions:

Duty Location: Heppner, Oregon

Vacancies	Position	Announcement Number	Contact
	Fire Engine Operator (FEO) GS-0462-6 7	ISSUED AT A LATER DATE	Shaun Mullins 541-676-2148 shaun.mullins@usda.gov
	Lead Forestry Technician (AFEO) GS-0462-5 6	ISSUED AT A LATER DATE	Shaun Mullins 541-676-2148 shaun.mullins@usda.gov
	Lead Forestry Technician (Hotshot/ Handcrew)	ISSUED AT A LATER DATE	Shaun Mullins 541-676-2148

	GS-0462-5 6		shaun.mullins@usda.gov
--	-------------	--	--

Duty Location: Ukiah, Oregon

Vacancies	Position	Announcement Number	Contact
	Supervisory District Fuels AFMO GS – 8/9	ISSUED AT A LATER DATE	Kevin Bomberger 541-427-5399 kevin.bomberger@usda.gov
	Handcrew Supervisor (High Complexity) GS-0462-7 8	ISSUED AT A LATER DATE	Charles Meyer 541-427-5397 charles.meyer2@usda.gov
	Fire Engine Operator (FEO) GS-0462-6 7	ISSUED AT A LATER DATE	Charles Meyer 541-427-5397 charles.meyer2@usda.gov
	Lead Forestry Technician (AFEO) GS-0462-5 6	ISSUED AT A LATER DATE	Charles Meyer 541-427-5397 charles.meyer2@usda.gov
	Wildland Forestry Aid – Region 6 GS-0462-3 4 FPL 5	ISSUED AT A LATER DATE	Charles Meyer 541-427-5397 charles.meyer2@usda.gov

Duty Location: Pomeroy, Washington

Vacancies	Position	Announcement Number	Contact
	District Assistant Fire Management Officer (AFMO) – Operations GS – 8/9 (Position may become vacant.)	ISSUED AT A LATER DATE	Tara Mackleit 509-843-4630 tara.mackleit@usda.gov Mike Moore 509-522-6284 michael.moore2@usda.gov

Duty Location: Walla Walla, Washington

Vacancies	Position	Announcement Number	Contact
	Supervisory Fire Engine Operator (SFE0) GS-0462-7 8	ISSUED AT A LATER DATE	Derek Dietz 509-522-6287 derek.dietz@usda.gov

IFPM/FSFPM Requirements

Review the required documents section and selective placement factors for each job announcement applying to.

For questions on Interagency Fire Program Management/Forest Service Program Management (IFPM/FSFPM) qualifications for specific qualifications please visit: [IFPM/FSFPM Crosswalk](#). Verification that applicants meet selective placement factors can be provided by submitting a current Incident Qualification Certification System (IQCS) Master Record or a completed NWCG Taskbook with the front cover and Verification/Certification of Completed Task Book for the Position completely filled out (Legibility) and signed by the Final Evaluator and Certifying Official, if a master record is not available.

The Process and Timeline

April 3rd, 2025—Outreach begins. *Response to the outreach will ensure that you receive specific information about announcement numbers and official closing dates for each of these positions. Additionally, outreach response will determine the specific positions being filled in this phase.*

April 4th – April 24th, 2025 (11:59 Eastern Standard Time) – Application Period. Apply through USAJobs. Applicants are encouraged to apply for multiple locations (**where they would accept a position if offered**).

April 25th – May 09th, 2025 – Applicant Review and Selection. *Representatives from each forest will make recommendations for hiring. Applicants selected will be notified by a Forest Service representative by phone.*

June 1st, 2025 – First effective date (excluding drug testing, transfer of station).

About the Forest:

The Umatilla National Forest consists of four Ranger Districts spanning across northeast Oregon and southeast Washington. The forest is located in the Blue Mountains of NE Oregon and SE Washington; with elevation ranging 1800 to 8000 feet, the forest vegetation ranges from dry open grass/shrub ponderosa pine to cold moist conifer forest.

Each Ranger District is comprised of a District FMO; District AFMO-Operations; District AFMO-Fuels; 2 or 3 Type 6 Engines and 1-Handcrew (10 person). The North Fork John Day District also staffs a 20 person Veterans Crew which primary focus is vegetation management projects that foster resilient forest landscapes through projects such as hand thinning and prescribed fire. Annually, approximately 80 fires occur across the forest which predominately occur as a result of periodic thunderstorm events which can produce multiple ignitions. The forest commonly assists other agencies on mutual aid fires, including Oregon Dept. of Forestry, Washington DNR as well as BLM and other forests within the Blue Mountains. The Umatilla also has a proactive integrated vegetation management program which includes mechanical and hand thinning along with landscape scale prescribed fire.

Additional Information on the Umatilla National Forest can be found at: <http://www.fs.usda.gov/umatilla/>

Specific Duty Location Information:

Heppner (Heppner Ranger District)

During the winter months, Fire crews are located at the district office in Heppner. During fire season, fire crews utilize the Tupper Guard Station located approximately 1 hour from Heppner. Beyond in-season use of Tupper Guard Station, **No Government Housing is available.**

Heppner is a small community of approximately 1,200 people and is the county seat of Morrow County. It is located approximately 45 miles south of Hermiston (population 19,400) and 65 miles southwest of Pendleton (population 17,300) and is situated in the rolling wheatlands which are foothills to the Blue Mountains. Heppner has one elementary school, one junior high school and one high school. The housing selection is affordable (\$45,000-\$150,000) but can be limited. Rentals are limited but can be found. Local services include a hospital and medical clinic, approximately seven churches, a library, a bank, a drug store, as well as other locally owned businesses. Agriculture is the area's primary industry. County services have offices in Heppner. Heppner has a golf course, a swimming pool, soccer field, basketball and tennis courts, ball fields and a reservoir nearby. Approximately 40 miles south on the District is Bull Prairie Reservoir and the Morrow County OHV Park. Snowmobiling is popular in winter and there is a local Nordic club which uses the District for its cross-country skiing activities. Hunting and fishing opportunities are plentiful.

Additional Community Information: <https://heppnerchamber.com/>

Ukiah, Oregon (North Fork John Day Ranger District)

Fire crews are based out of the District Office all year. **Government Housing may be available.** The district has several housing options in Ukiah: multiple bunkhouses on the district compound, a separate housing annex with modular homes, and four RV spots. Availability is limited. Private housing options for purchase or rental are limited in Ukiah.

Ukiah is a small mountain community with a year-round population of 250. The district is considered remote, but the town offers a grocery store, motel, laundromat, cafe, two churches, tavern, fuel services, city park, post office, and a school with grades K-12. There are also two RV parks with full hookups, one offers cabin rentals.

Pendleton (population: 17,300), location of the Umatilla National Forest Supervisor's Office, is 52 miles north on US Highway 395; La Grande (population: 13,000) is 56 miles east on State Highway 244. Many employees live in Pendleton and La Grande and commute daily. **Remote Site Allowance may be available for commuters.** Both Pendleton and La Grande are full-service communities with a reasonable variety of shopping opportunities. There is no government housing available in either Pendleton or La Grande.

Pomeroy, Washington (Pomeroy Ranger District)

Fire Crews are based out of the District Office all year; **No Government Housing is Available.**

Pomeroy is the only town in Garfield County and is the County Seat. It is a full-service community of approximately 1,250 residents with a hospital/care center, medical doctor and practitioner, dentist, numerous churches, 1 grocery store, mini-mart, 3 banks, a motel, 2 Bed & Breakfasts, 3 eating establishments, 3 card operated gas stations (2 accept cash during regular business hours), pharmacy, hardware store, several small businesses, museum, and a library. Just 30 miles to the east is the Clarkston, Washington – Lewiston, Idaho hub that contains any medical and shopping items an individual might need. There are numerous other large towns within 2 hours or less driving distance such as Spokane, Walla Walla, and Pullman, Washington and Moscow, Idaho.

The public school system in Pomeroy has very good marks for the quality of education provided in grades K-12. There are numerous colleges and universities in the surrounding area such as Walla Walla Community College (with a branch at Clarkston), Walla Walla University and Whitman College in Walla Walla, Lewis and Clark State College in Lewiston, University of Idaho in Moscow, Washington State University in Pullman, and Gonzaga University, Whitworth, Eastern Washington University and Spokane Community College all surrounding Spokane.

Additional Community Information: <http://www.pomeroychamberofcommerce.com/>

Walla Walla, Washington (Walla Walla Ranger District)

During the winter months, the fire crews are located at the District Office in Walla Walla, WA. During fire season, it is common for fire units to be staffed at either Tollgate, Summit or Long Meadow Guard Stations. These locations are approximately 1 to 2 hours from Walla Walla. When staying at these guard stations, Field Per Diem is authorized.

No Government Housing is Available.

The Walla Walla Valley is nestled at the foot of the Blue Mountains, on the sunny side of Washington State. An “oasis in the desert,” the valley has an abundance of trees, many of them record trees for the State, and 300 days of sunshine a year. The average annual rainfall is less than 20” per year and there are four distinct seasons. Cultural and community events are more numerous than one would expect in an area of 55,000 people. Whitman College, a prestigious liberal arts and sciences college, maintains a beautiful campus near the downtown of Walla Walla. In nearby College Place, Walla Walla College, operated by the 7th Day Adventist Church is also highly regarded. Walla Walla Community College is an accredited public two-year college that also offers several degree programs in partnership with Washington State University. Together, these institutions offer many options for undergraduate or graduate degrees and contribute to the vitality of the community. Several wineries and vineyards have established in the area in recent years, and more continue to open. There is commercial air service from Walla Walla, and a new airport opened in 2001. Additional flights are available from Pasco, about a 55-minute drive from Walla Walla.

Walla Walla is a full-service community. There is excellent shopping, restaurants, theaters, parks, hospitals, and clinics. The town has a well-developed transit system and great schools.

Forest Service employees on the workforce reduction placement system list will receive priority consideration and CTAP/ICTAP candidates will receive the appropriate consideration.

The U.S. Department of Agriculture (USDA) prohibits discrimination on all its programs and activities on the basis of race, color, national origin, gender, religion, age, disability, political beliefs, sexual orientation, and marital or family status. (Not all prohibited bases apply to all programs.) Persons with disabilities who require alternative means for communication of program information (Braille, large print, audiotape, etc.) should contact USDA's TARGET Center at (202) 720-2600 (voice and TDD). To file a complaint of discrimination, write USDA, Director, Office of Civil Rights, Room 326-W, Whitten Building, 14th and Independence Avenue, SW, Washington, DC 20250-9410 or call (202) 720-5964 (voice and TDD). USDA is an equal opportunity provider and employer.