

2025



Central Oregon Personal Use Firewood Synopsis

Rules, Regulations and Maps for:
Deschutes & Ochoco National Forests
Crooked River National Grassland



In accordance with Federal civil rights law and U.S. Department of Agriculture (USDA) civil rights regulations and policies, the USDA, its Agencies, offices, and employees, and institutions participating in or administering USDA programs are prohibited from discriminating based on race, color, national origin, religion, sex, gender identity (including gender expression), sexual orientation, disability, age, marital status, family/parental status, income derived from a public assistance program, political beliefs, or reprisal or retaliation for prior civil rights activity, in any program or activity conducted or funded by the USDA (not all bases apply to all programs). Remedies and complaint filing deadlines vary by program or incident.

Persons with disabilities who require alternative means of communication for program information (e.g. Braille, large print, audiotope, American Sign Language, etc.) should contact the responsible Agency or USDA's TARGET Center at (202) 720-2600 (voice and TTY) or contact USDA through the Federal Relay Service at (800) 877-8339.

To file a program discrimination complaint, complete the USDA Program Discrimination Complaint Form, AD-3027, found online at http://www.ascr.usda.gov/complaint_filing_cust.html and at and USDA office or write a letter addressed to USDA and provide in the letter all of the information requested in the form. To request a copy of the complaint form, call (866) 632-9992. Submit your form or letter to USDA by: (1) mail: U.S. Department of Agriculture, Office of the Assistant Secretary for Civil Rights, 1400 Independence Avenue, SW, Washington, D.C. 20250-9410 (2) fax: (202) 690-7442; or (3) email: program.intake@usda.gov

General Rules and Regulations: These rules are in addition to the “General and Other Conditions” listed on your permit. See individual woodcutting maps for additional specifications for those areas.

1) Permittee must be present and have in their possession:

- ☐ Permit
- ☐ Synopsis - rules and regulations
- ☐ Firewood unit maps
- ☐ Load tags
- ☐ Required Fire equipment:
Spark arrester 0.023" or less on chain saw.
Shovel - long handled, round point, 8" blade (size 0).
Fire extinguisher with a pressurized chemical of no less than 8 ounce capacity by weight.

2) The current year's load tag must be validated by completely removing the month and day that you are removing the firewood. The validated tag must be highly visible at the back of the load, and displayed prior to moving the vehicle. Previous year's tags are not valid. One tag is required for every 1/2 cord of firewood, or any portion thereof.

3) Each household may obtain up to eight (8) cords of free personal-use firewood annually. Permit is for personal use only and cannot be sold, transferred or bartered.

4) Households interested in selling firewood may purchase personal-use charge permits for up to eight (8) cords of firewood annual.

5) Permittee shall complete the Product Quantity Removal Record in ink prior to transporting products.

6) Woodcutting is prohibited in all posted timber sales, contract areas, developed campgrounds, old growth areas, research natural areas, riparian areas, wilderness areas and all other areas posted closed to woodcutting. Riparian areas are defined as follows for each National Forest (NF):

Deschutes NF - riparian areas are defined as land within 300 feet of water such as springs, streams, wet meadows, floodplains and overflow channels.

Crooked River National Grassland (CRNG) and Ochoco NF – Riparian Habitat Conservation Areas (RHCAs) are NOT open to woodcutting. These areas are displayed on each map, in light gray under the legend category of “Closed to Woodcutting – Riparian”.

7) Do not cut trees (standing and/or down) marked with paint, signs, wildlife tags, blazes or with any evidence of wildlife habitation such as nests or cavities.

8) Open and closed dates, species authorized for removal, and other restrictions may vary by map, see each cutting area map for specific information about firewood cutting.

9) Woodcutting is authorized for dead trees only, or as specified on woodcutting maps. Some areas do not allow the cutting of standing dead trees. Be familiar with the map of your cutting area.

10) Where cutting of standing trees is allowed, stump heights may not exceed 12 inches. Maximum length of wood allowed to be transported is 6 feet. Remove all wood down to 3 inches in diameter for less waste.

11) Protect all green trees and other vegetation during falling and removal activities. Live trees and other vegetation may not be cut to create access to firewood.

12) The only power equipment authorized for use are: chain saws, winches and hydraulic splitters, unless otherwise prohibited in specific cutting areas.

13) Woodcutting activity is permitted only within designated firewood area boundaries as specified on woodcutting map.

14) Cut and scatter limbs and tops so they lie no more than 12" from the ground. This reduces potential for wildfire. Remove all slash from roads, ditches, and trails.

15) Woodcutters must comply with all road closures, seasonal road closures, and transport firewood in vehicles less than 26,000 lbs GVW.

16) No tree felling within 150 feet of utility lines.

17) No cutting (including pruning or clipping) of whitebark pine.

Know where you are and where you are cutting.

Watch for the following signs:

Entering



Firewood Cutting Area

Leaving



Firewood Cutting Area

Sensitive Forest Resource Area

Woodcutting is NOT Authorized Behind This sign



Timber Sale Area

NO Firewood Cutting Allowed



Entering Newberry National Volcanic Monument

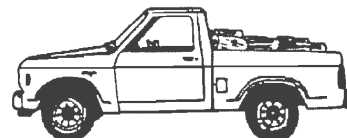
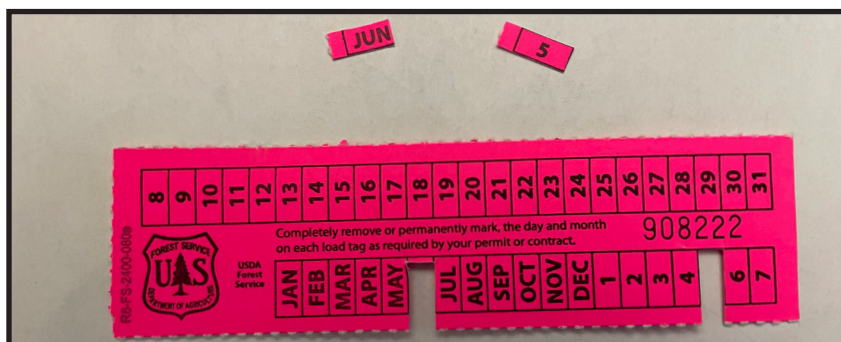
FOREST PRODUCT REMOVAL AND OHV/ATV USE IS PROHIBITED



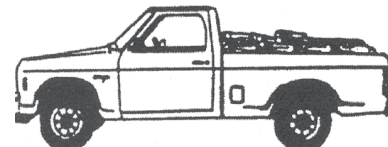
for the greatest good

Validate and Use Load Tags Correctly

- Measure your load of wood to determine how many tags are necessary.
- One cord = 4 feet by 4 feet by 8 feet, or 128 cubic feet.
- To validate your tags, completely remove the day and month tabs from each load tag needed.
- Securely attach all load tags to the back of your load in a highly visible location.
- Attach one tag for each 1/2 cord or portion thereof. (See Rule #2 above)



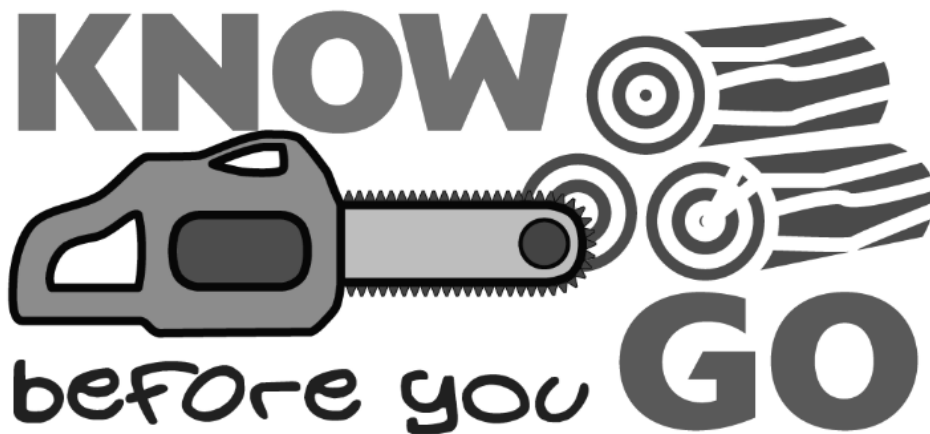
Short bed pickup truck
1/2 cord or less = 1 tag



Full size pickup truck
1/2 cord or less = 1 tag



Full size pickup with rails
1 cord = 2 tags



Know the current Fire Precaution Requirements

- Call the toll-free recorded fire information message line at 1-800-523-4737.
- Call one of the local offices listed on the back of this synopsis.

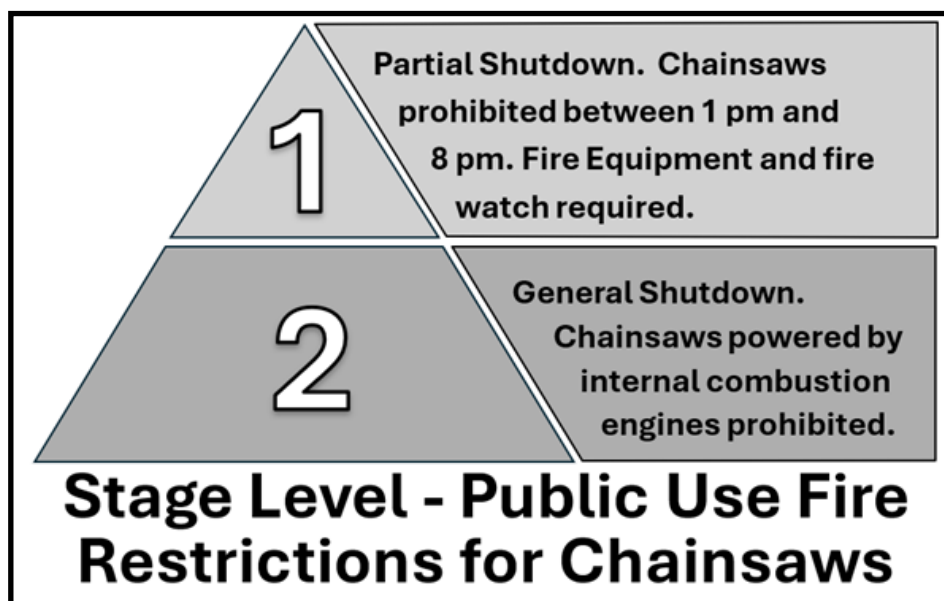
General Fire Information:

<http://www.centraloregonfire.org/>
or use the QR code shown here:



To Report a Wildfire:

Call 911 or the
Central Oregon Interagency Dispatch Center (541) 316-7700.



Prescribed burning is a forest restoration tool that is typically done in the spring and the fall. If you are out on the forest or grassland collecting firewood, keep up with these planned ignitions by visiting <https://www.centraloregonfire.org/prescribed-fire-smoke-plans/> or use the QR code shown here:



Fire Precaution Requirements

Required Equipment & Fire Watch

The following equipment and fire watch are required while using power equipment from **May 1st to November 30th**:

- Spark Arrester: Chainsaw exhaust system must be in good repair with a screen type spark arrester of 0.023" or less and qualified under USDA/USDI Federal Standards
- Shovel: Long handled round point with an 8" blade (size 0) in possession of the operator.
- Fire Extinguisher: Pressurized chemical of not less than 8 ounce capacity by weight.
- Fire Watch: 1-hour fire watch is required after power equipment is shut off.

Public Use Fire Restriction Stage Levels for Chainsaws

Stage 1:

Shut down all chainsaws powered by an internal combustion engine between the hours of 1 pm and 8 pm. A Fire Watch is required to stay in the area for one hour after power equipment has been shut off to watch for fire starts. Fire equipment is required.

Stage 2:

All woodcutting activity with chainsaws powered by an internal combustion engine are **PROHIBITED**.

**For more information on Public Use Fire Restrictions, please visit the Deschutes National Forest website or <https://centraloregonfire.org/fire-restrictions/> or use the QR code shown here:



Contents

(page #, firewood map)

Bend-Fort Rock RD

- 6 BFR Roadside 1
- 7 BFR Roadside 2
- 8 BFR Roadside 3
- 9 BFR Roadside 4
- 10 BFR Roadside 5

Crescent RD

See map insert

Sisters RD

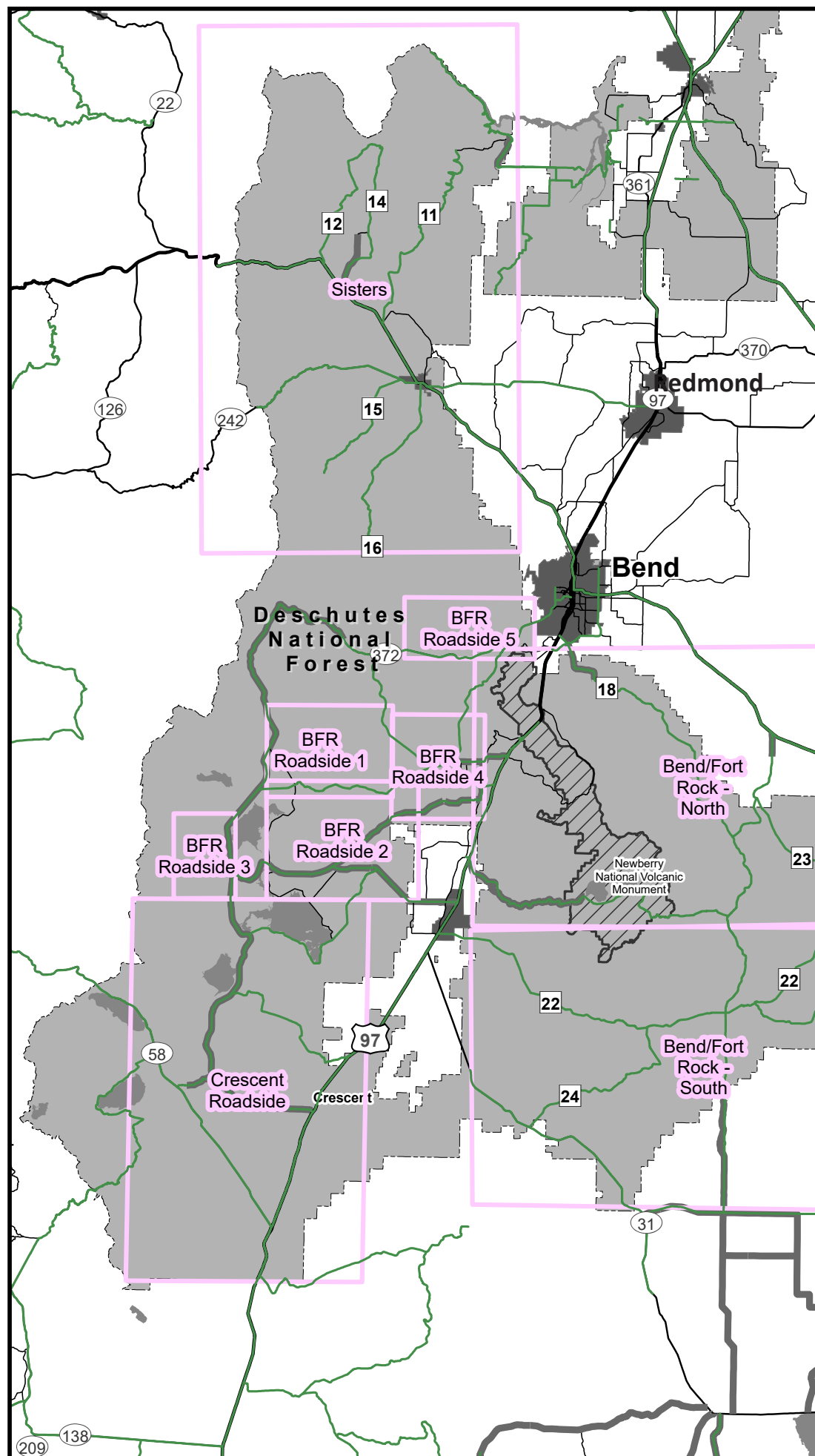
See map insert

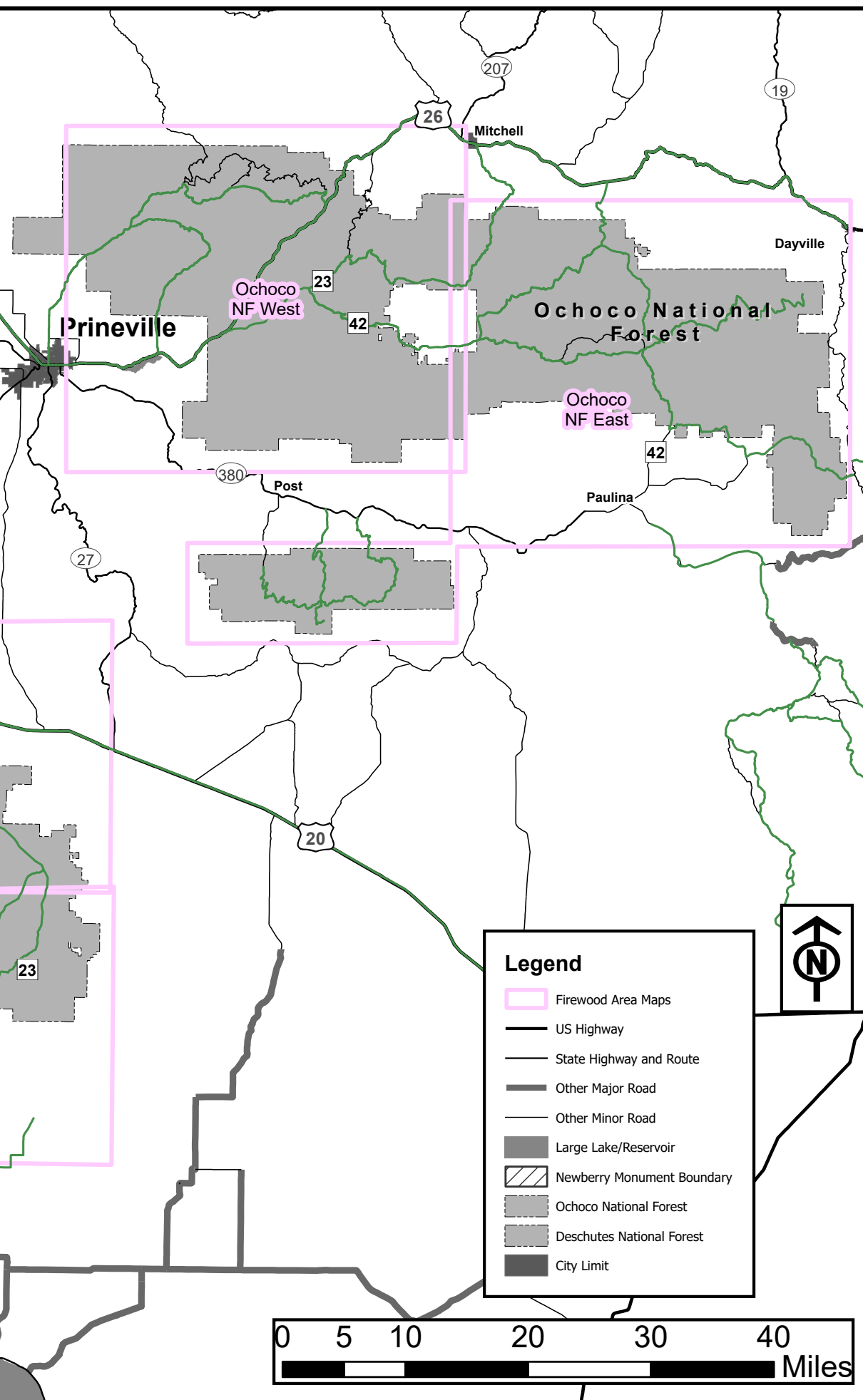
Ochoco NF East and West Maps

See map insert

Bend-Ft. Rock North and South Maps

See map insert





ADDITIONAL FIREWOOD CUTTING AREAS

may open after publication of the 2025 Synopsis. Contact a Ranger District office regarding the availability of new areas and to obtain a map of the new area.

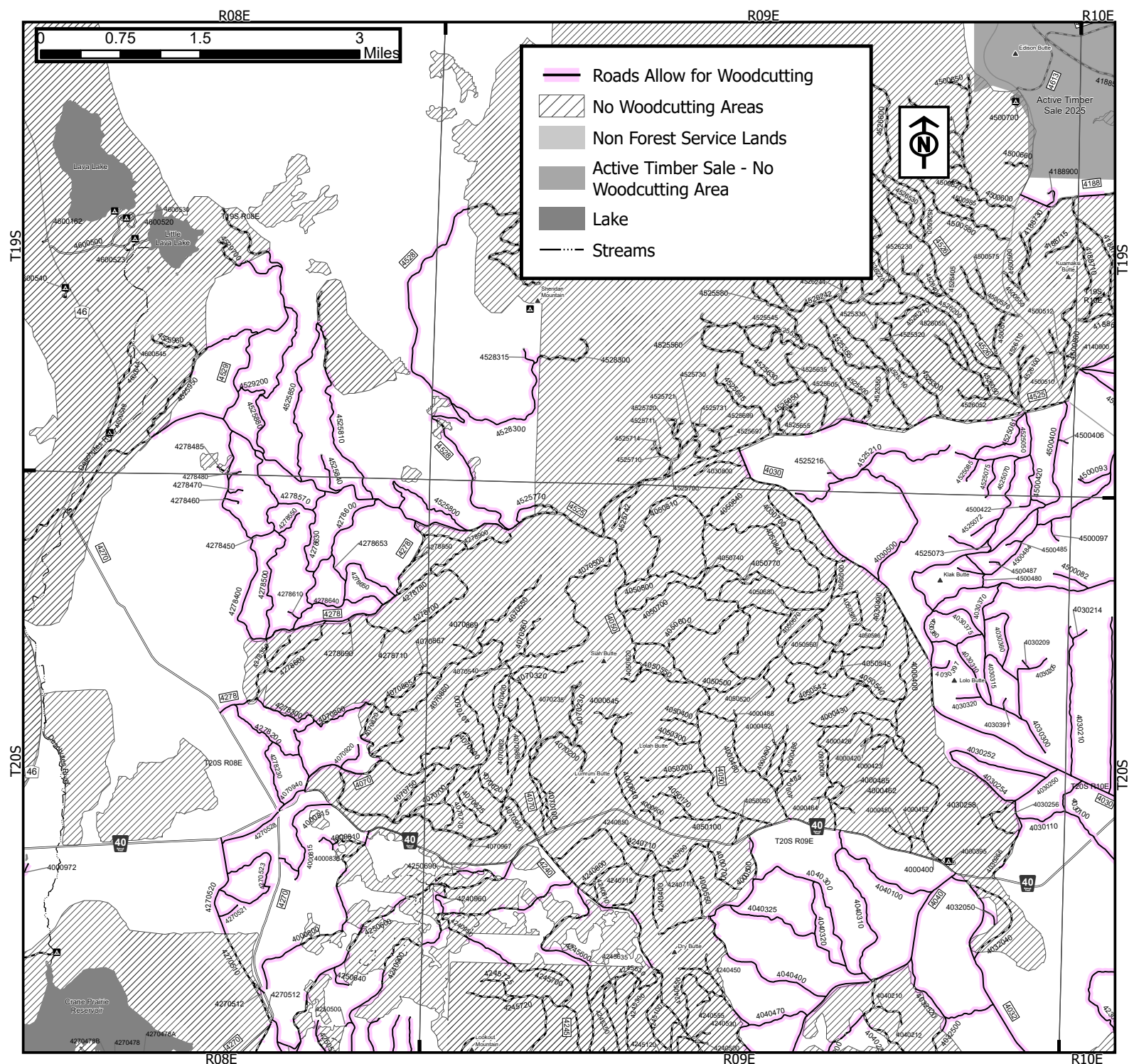
The specific USDA Forest Service map noting the location of new areas is required to be in your possession when cutting or removing wood.

THE FIREWOOD CUTTING SEASON IS LIMITED TO THE DATES SPECIFIED ON MAPS

This seasonal restriction is in place to protect roads that are more likely to be saturated with water outside of the specified dates, to protect soils that could be damaged due to high soil moisture, and for wildlife preservation and resource protection. Central Oregon Firewood Cutting is limited, see cutting area map(s) for local restrictions and/or closures.

BFR ROADSIDE UNIT 1 Bend-Ft. Rock Ranger District, Deschutes National Forest

Opens: May 1 Closes: November 30



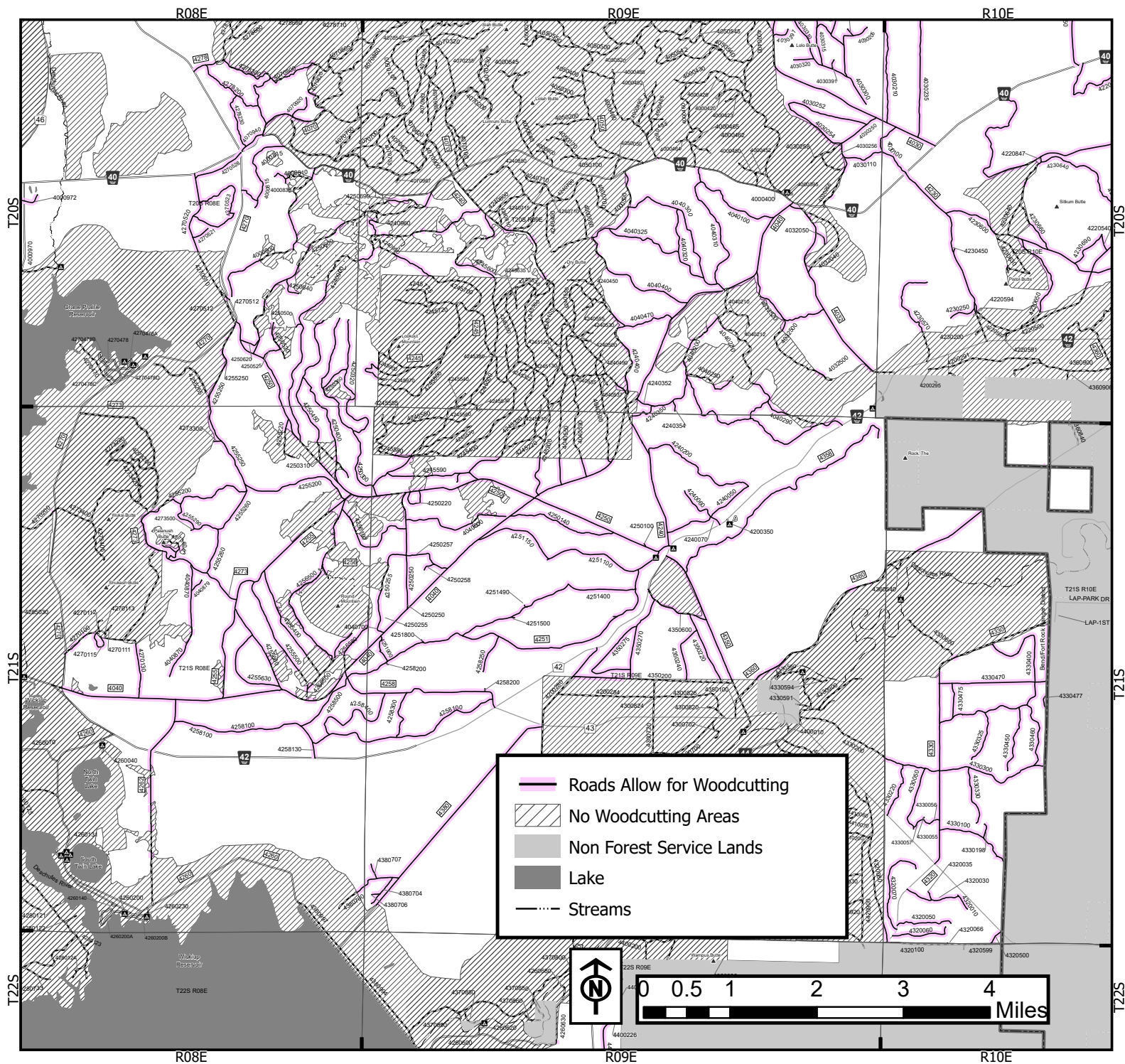
YOU CAN CUT AND REMOVE: All species of standing dead trees or down dead trees, less than 24" in diameter (75" circumference), measured 12 inches above the root collar, located within 150' of the road edge. Roads open to woodcutting are highlighted in pink on the map.

Special Regulations: Vehicles must stay on roads or road shoulders. (Road shoulder defined as within 20' of the road edge). Off road travel is not allowed. Motorized travel for the purpose of firewood harvest must comply with restrictions found on Forest Service Motor Vehicle Use Maps. No winching of material is allowed. Do not cut, remove, or disturb material that has been piled for burning. All slash must be kept clear of roads, ditches and trails. No felling within 150 feet of Road 40. Temporary emergency fire closures may be in effect. Check with local district for current conditions.

Directions: From Bend, travel south on US-97 for 14 miles. Take exit 153 for South Century Drive toward Sunriver. Turn right and continue for 1.5 Miles. At the traffic circle, take the 2nd exit and stay on South Century Drive. Continue on South Century Drive for 8.8 miles. Turn left on Forest Road 4525 to access the general cutting area.

BFR ROADSIDE UNIT 2 Bend-Ft.Rock Ranger District, Deschutes National Forest

Opens: May 1 Closes: November 30



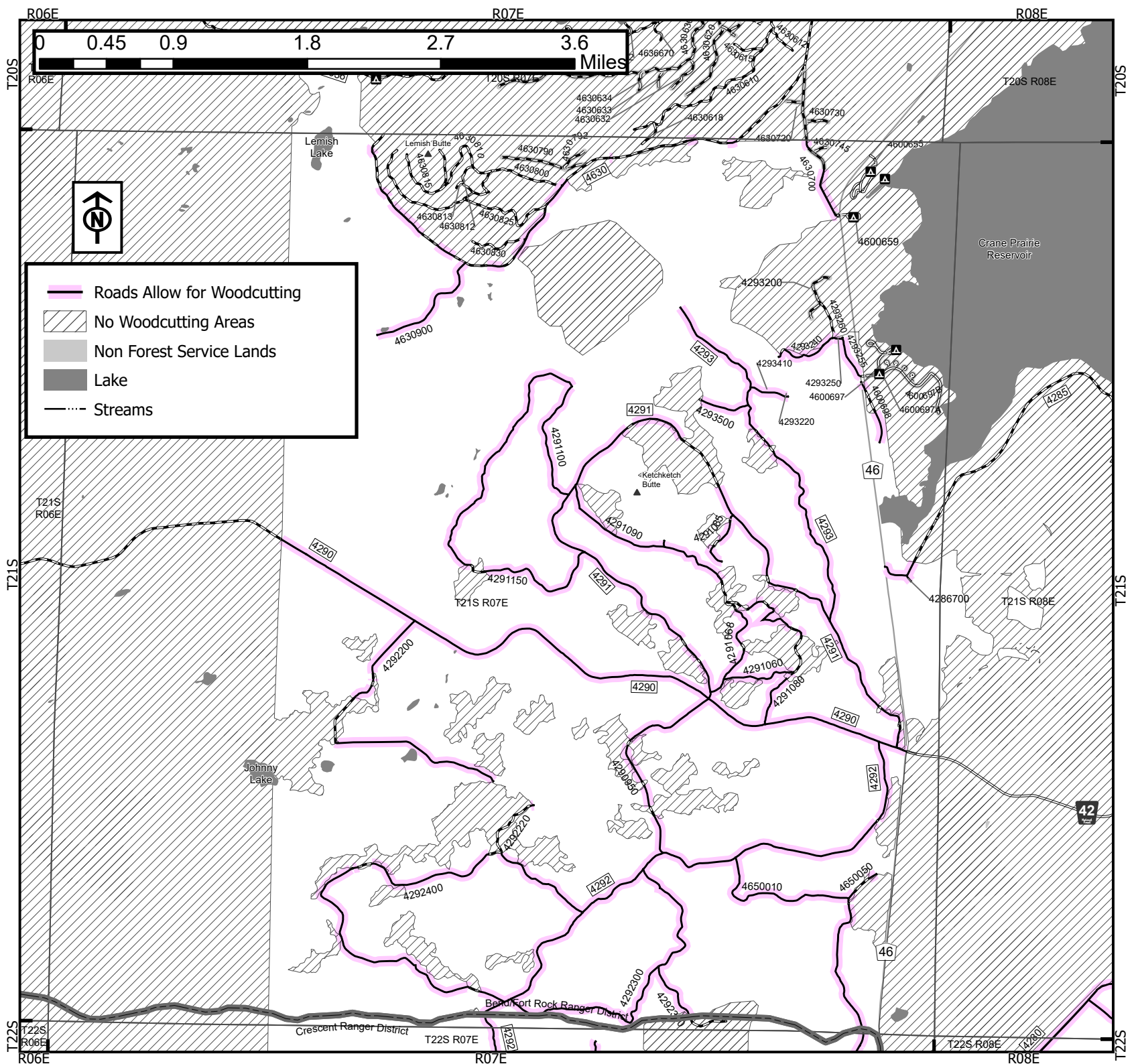
YOU CAN CUT AND REMOVE: All species of standing dead trees or down dead trees, less than 24" in diameter (75" circumference), measured 12 inches above the root collar, located within 150' of the road edge. Roads open to woodcutting are highlighted in pink on the map.

Special Regulations: Vehicles must stay on roads or road shoulders. (Road shoulder defined as within 20' of the road edge). Off road travel is not allowed. Motorized travel for the purpose of firewood harvest must comply with restrictions found on Forest Service Motor Vehicle Use Maps. No winching of material is allowed. Do not cut, remove, or disturb material that has been piled for burning. All slash must be kept clear of roads, ditches and trails. No felling within 150 feet of Roads 40 and 42.

Directions: From Bend, OR: Travel 17.3 miles south on Hwy 97, then 12.2 miles southwest on County Road 42 to arrive in the general area.

BFR ROADSIDE UNIT 3 Bend-Ft.Rock Ranger District, Deschutes National Forest

Opens: May 1 Closes: November 30



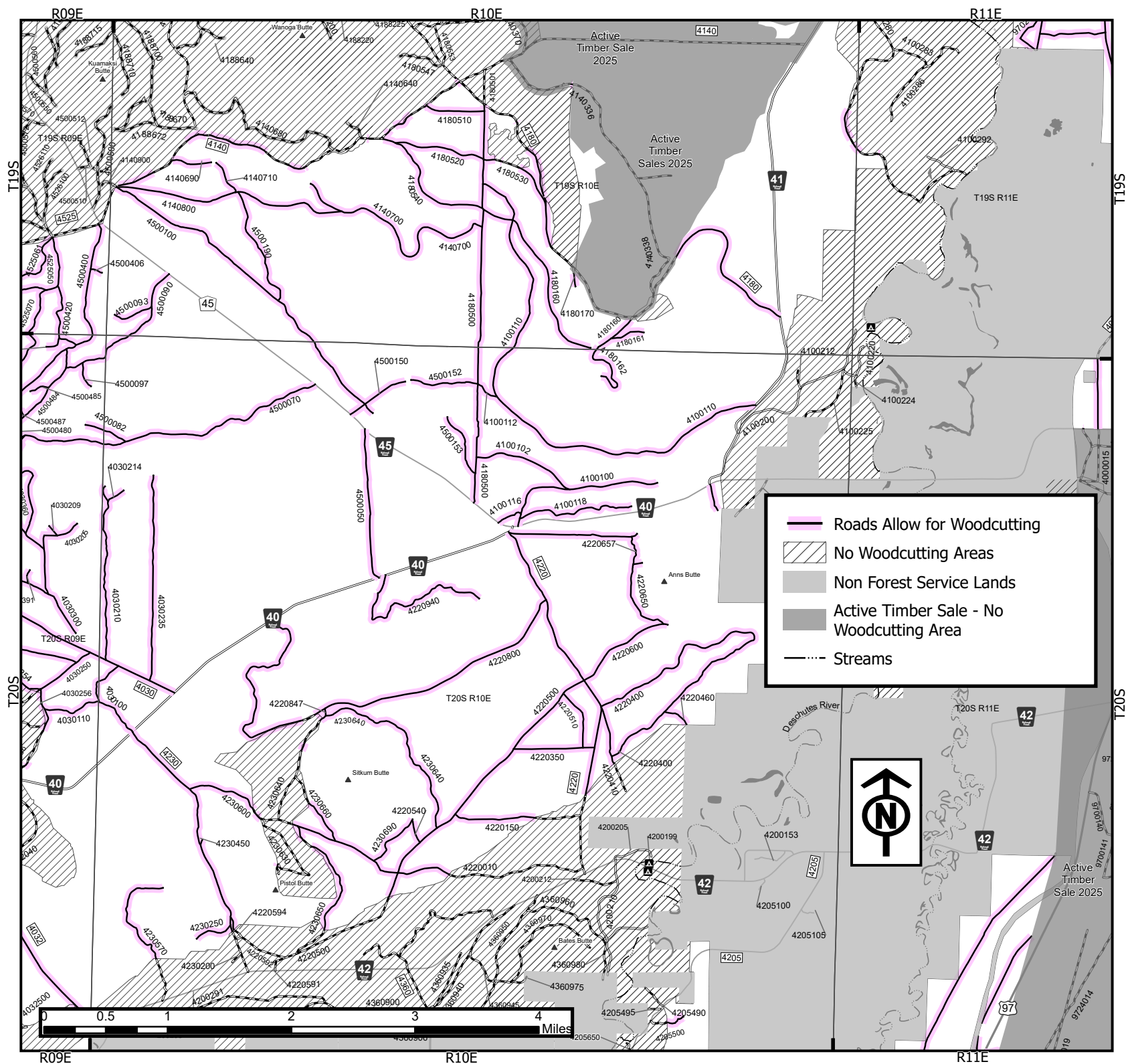
YOU CAN CUT AND REMOVE: All species of standing dead trees or down dead trees, less than 24" in diameter (75" circumference), measured 12 inches above the root collar, located within 150' of the road edge. Roads open to woodcutting are highlighted in pink on the map.

Special Regulations: Vehicles must stay on roads or road shoulders. (Road shoulder defined as within 20' of the road edge). Off road travel is not allowed. Motorized travel for the purpose of firewood harvest must comply with restrictions found on Forest Service Motor Vehicle Use Maps. No winching of material is allowed. Do not cut, remove, or disturb material that has been piled for burning. All slash must be kept clear of roads, ditches and trails. No felling within 150 feet of Road 46.

Directions: From Bend, OR: Travel about 50 miles southwest on Cascade Lakes Hwy (Road 46) to arrive in the general area.

BFR ROADSIDE UNIT 4 Bend-Ft.Rock Ranger District, Deschutes National Forest

Opens: May 1 Closes: November 30



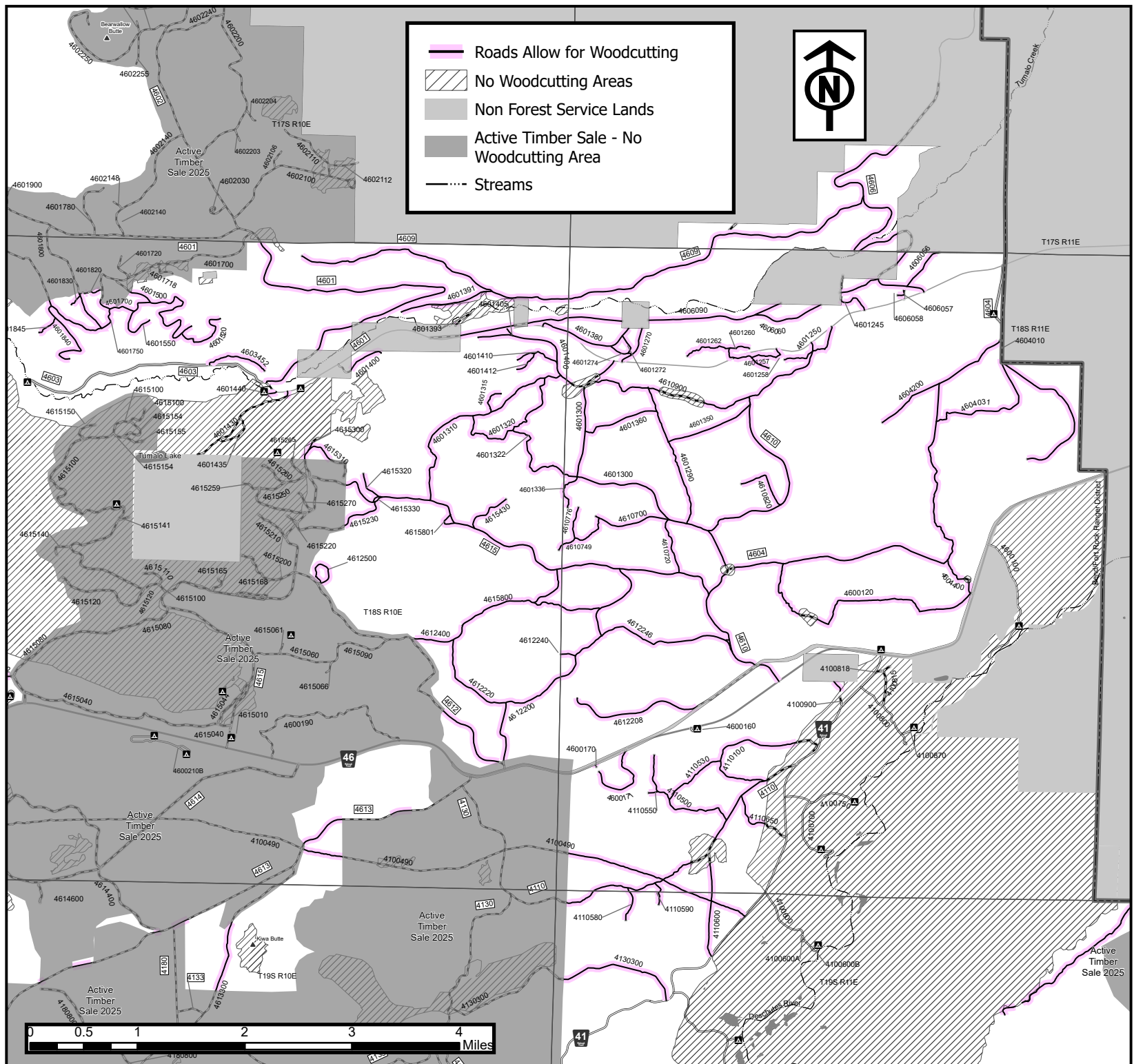
YOU CAN CUT AND REMOVE: All species of standing dead trees or down dead trees, less than 24" in diameter (75" circumference), measured 12 inches above the root collar, located within 150' of the road edge. Roads open to woodcutting are highlighted in pink on the map.

Special Regulations: Vehicles must stay on roads or road shoulders. (Road shoulder defined as within 20' of the road edge). Off road travel is not allowed. Motorized travel for the purpose of firewood harvest must comply with restrictions found on Forest Service Motor Vehicle Use Maps. No winching of material is allowed. Do not cut, remove, or disturb material that has been piled for burning. All slash must be kept clear of roads, ditches and trails. No felling within 150 feet of Roads 40 and 45. Temporary emergency fire closures may be in effect. Check with local district for current conditions

Directions: From Sunriver, OR travel approximately 5 miles west on Spring River Road to the cutting area.

BFR ROADSIDE UNIT 5 Bend-Ft.Rock Ranger District, Deschutes National Forest

Opens: May 1 Closes: November 30



YOU CAN CUT AND REMOVE: All species of standing dead trees or down dead trees, less than 24" in diameter (75" circumference), measured 12 inches above the root collar, located within 150' of the road edge. Roads open to woodcutting are highlighted in pink on the map.

Special Regulations: Vehicles must stay on roads or road shoulders. (Road shoulder defined as within 20' of the road edge). Off road travel is not allowed. Motorized travel for the purpose of firewood harvest must comply with restrictions found on Forest Service Motor Vehicle Use Maps. No winching of material is allowed. Do not cut, remove, or disturb material that has been piled for burning. All slash must be kept clear of roads, ditches, and trails. No felling within 150 feet of Road 46 and 4601 (Skyliners Road).

Directions: From Bend, OR take the roundabout on Mt. Washington drive and travel west on Skyliner Road for approximately 3 miles to forest road 4601. The cutting area is located to the south.

Central Oregon Tree Descriptions

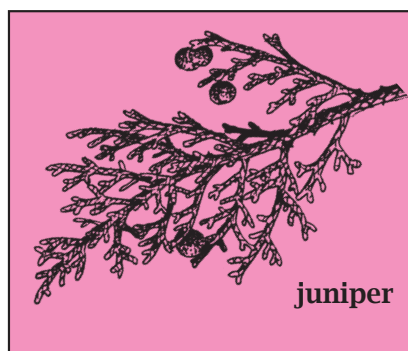
Lodgepole pine bark is thin, flaky and gray with no crevices, except near the base of the tree. Prickly, egg-shaped cones, seldom longer than 2 inches, may remain closed on the tree for years.

Ponderosa pine egg-shaped cones are 3-6 inches long and each scale is tipped with a short, straight prickly, hence the nickname "prickly ponderosa." The bark is much thicker than lodgepole pine bark and sheds jigsaw puzzle flakes. The bark on young trees is nearly black, while mature trees are yellow or orange in color. Bark crevices of older trees and cut branches have a pitchy smell similar to turpentine.

Lodgepole pine-two needle bundles 1-3" long, thin gray bark with no crevices.



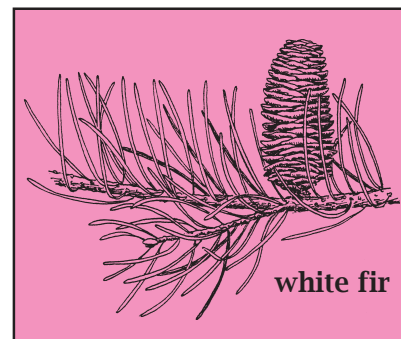
Ponderosa pine-three needle bundles 5-10" long. Bark is much thicker than lodgepole and has crevices.



juniper

Juniper needles are tiny, scalelike and scratchy to the touch. Juniper trees have bluish-white coated berries instead of cones. The bark is thin, reddish-brown and fibrous.

White fir horizontal branches form a pointed, narrow crown. Flat, flexible needles extend in rows perpendicular to the stem. Needles are light bluish green with white lines above and are 1 to 2.5 inches long. Light gray bark is much thicker than lodgepole pine bark. Cones are greenish-yellow or purplish, 3-5 inches long, and cylindrical, growing upright from the topmost twigs. Cone scales have fine hairs and short concealed bracts. White fir produces a fragrant resin which rises in small blisters on the trunk.



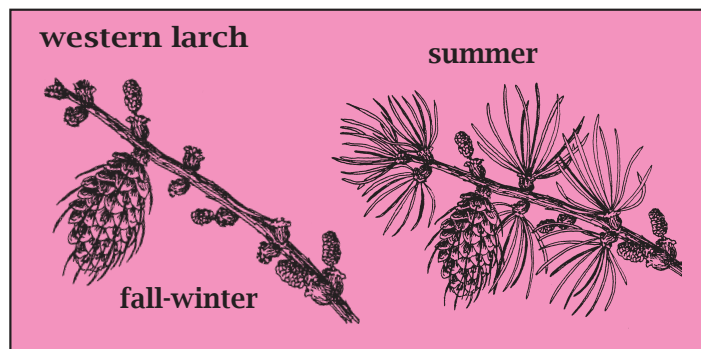
white fir



Douglas-fir

Douglas-fir needles are 1 inch long with a blunt tip. They surround the twig like the bristles of a bottle brush and are soft to touch. Cones are 3-4 inches long. Pitchfork shaped bracts are longer than the scales and hang down. The bark has resin blisters when young and is reddish-brown with deep furrows when mature.

Western larch also called Tamarack is Oregon's only native conifer that sheds its needles after they turn yellow in the late fall or winter. Spring needles are very light green and darken over the summer. Needles cluster on stout woody pegs. Whiskery cones are small and woody, 1-2 inches long with papery bracts that are longer than the scales. Bark is reddish-orange, furrowed and flakes off in irregular shaped pieces.



western larch

summer

fall-winter

Want to learn more about trees? Contact your local Ranger District.

Digital/Electronic Versions of the Firewood Synopsis and Maps

To download PDF versions of the Firewood synopsis and map inserts, please visit the Forest Service website at:
<https://go.usa.gov/xtwef>

Have an Apple (IOS) or Android device?

Try the mobile PDF Maps app available from Avenza to use geospatial information to find your exact location on firewood maps. The PDF Maps app can read thousands of professionally made maps available through the Avenza map store. Spatially referenced PDFs allow you to view your location, record GPS movements, save locations and find specific places.

For more information, please visit Avenza's website at <http://www.avenza.com/pdf-maps>

To download available maps, please visit Avenza's website at <http://www.pdf-maps.com/get-maps>

Use the PDF Maps App to search for the primary location of the firewood cutting area you are interested in. For example, you can enter "Deschutes National Forest", or "Ochoco National Forest" or "Crooked River National Grassland". Once the primary location is found, look for the name of the firewood cutting area you want to download under the heading of the primary location.

DISCLAIMER: Digital/Electronic maps on the Avenza and Forest Service websites are provided for your convenience only; they do not replace the paper maps that accompany your Firewood Synopsis. Pursuant to the terms and conditions of your firewood cutting permit, it is required for you to have the firewood permit and firewood synopsis in your possession while cutting or removing firewood.

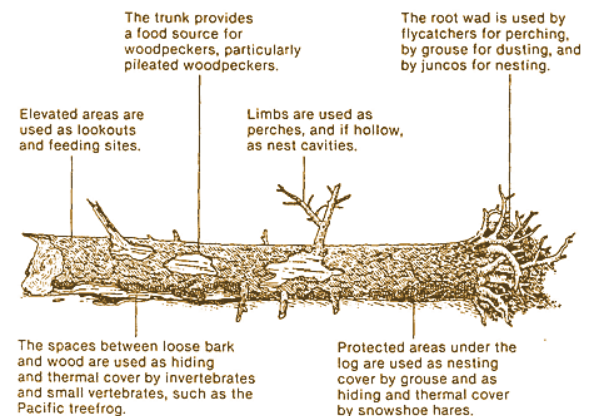
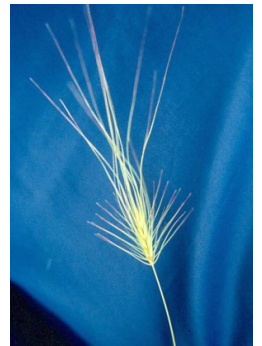
Noxious Weeds

Noxious weeds devour 4,600 acres of public land doing millions of dollars worth of damage in the west each year. Also known as exotics and invasive plants, noxious weeds: REDUCE forage diversity and quality for wildlife and livestock REDUCE nesting for animals CHOKe OUT native plant life and CAN INCREASE wildfire frequency. YOU Can Help By... Washing your vehicle prior to entering Public Lands - especially the tires, undercarriage, muffler, etc to remove any noxious weed seeds that you may have picked up along roadways. Properly disposing of garden waste. (No dumping on Public Lands!). Be aware and don't transport loose soil and plant parts. Toadflax and Spotted Knapweed are just two of many noxious weeds threatening healthy plant communities in Central Oregon. For an extensive weed list and additional information go to the Oregon Noxious Weed Profiles site at: <https://go.usa.gov/xdgWD>

With the help of many volunteers, public land managers organize weed pulls, clip seed heads, put biocontrol agents (natural insect enemies) onto weed populations, arrange for herbicide spraying on certain sites, and participate in local weed boards and partnerships.

Contact the Invasive Plant Program Manager for the Deschutes National Forest, Ochoco National Forest and the Crooked River National Grassland for more information at 541-416-6588

Medusahead is an invasive annual grass that is difficult to contain and easily dispersed through vehicle travel and other ground-disturbing activity. Identifying and avoiding medusahead can help prevent its spread.



Wildlife and Snags

Dead and dying trees provide food and shelter for many wild animals. As a tree dies, each stage of decomposition plays a vital role in the feeding, breeding, or housing of wildlife. Before taking a standing dead tree for firewood, please examine the tree for wildlife use, and if there is significant use, please consider leaving it for wildlife.

Woodcutting Permits and more information are available at the following locations:

Crescent Ranger District
136471 Hwy 97 North
Crescent, OR 97733
(541) 433-3200

Redmond Air Center
1740 SE Ochoco Way,
Redmond, OR 97756
(541) 504-7200

Sisters Ranger District
US-20 & S Pine St
Sisters, OR 97759
(541) 549-7700

Bend/Fort Rock Ranger District
Deschutes NF Supervisor's Office
63095 Deschutes Market Rd.
Bend, OR 97701
(541) 383-5300

Ochoco National Forest
Lookout Mt. Ranger District
Paulina Ranger District
3160 NE 3rd St.
Prineville, OR 97754
(541) 416-6500

Crooked River National Grassland
274 SW 4th St
Madras, OR 97741
(541) 416-6640

For a list of vendors who also sell firewood permits, please visit the Forest Service website at:

https://www.fs.usda.gov/Internet/FSE_DOCUMENTS/fseprd1016272.pdf