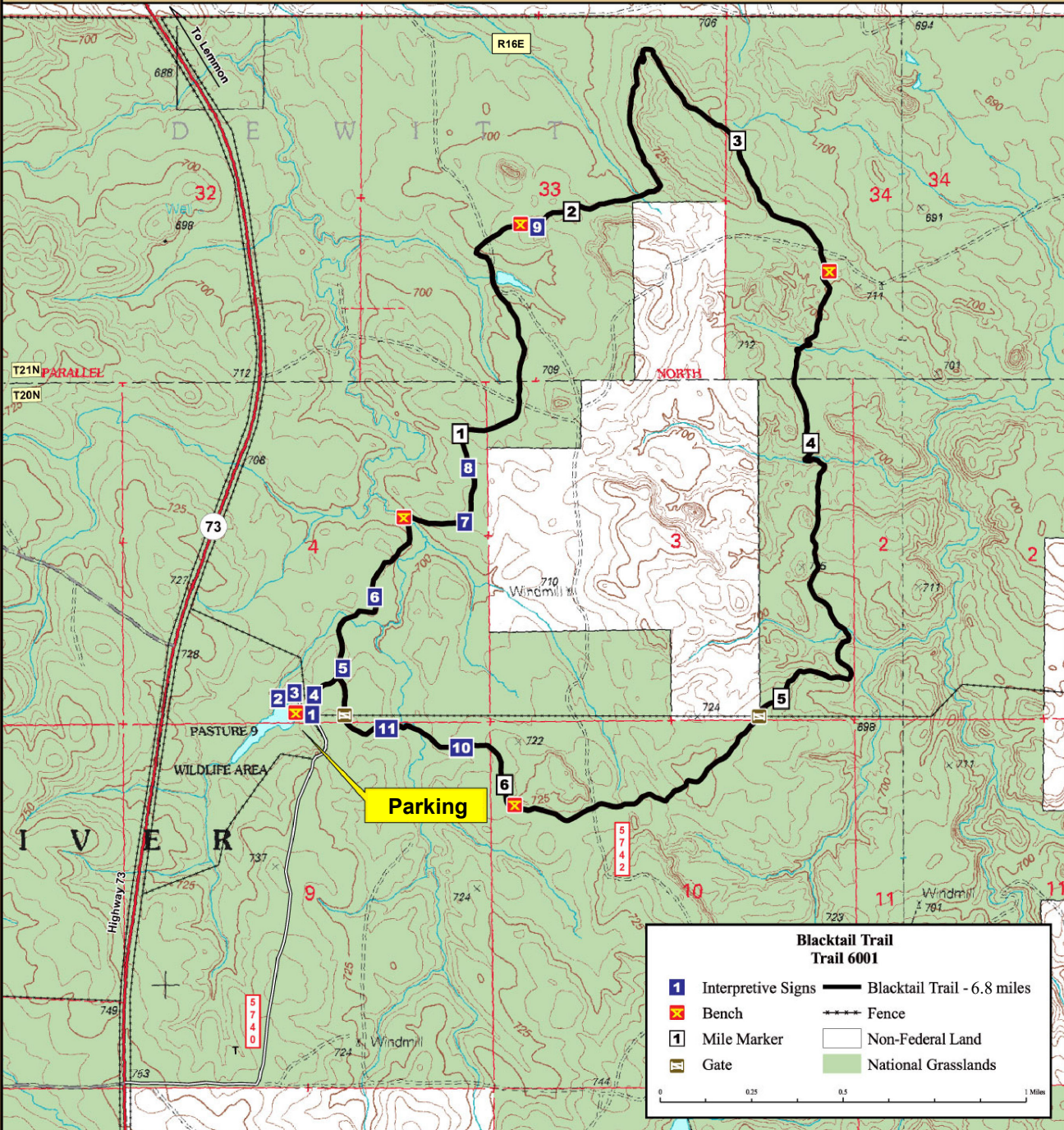




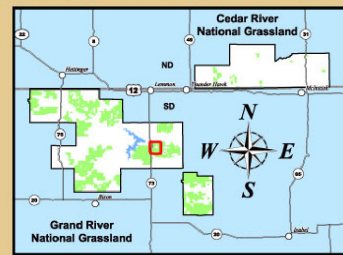
BLACKTAIL TRAIL

GRAND RIVER NATIONAL GRASSLAND
DAKOTA PRAIRIE GRASSLANDS



- ### Interpretive Signs
- | | |
|----------------------------|------------------------------|
| 1 Public Land Surveying | 7 Windmills |
| 2 Aquatic Life | 8 Wildflowers of the Prairie |
| 3 Waterfowl | 9 The Earliest Settlers |
| 4 Welcome | 10 Grassland Birds |
| 5 Great Plains Weather | 11 From Bison to Cattle |
| 6 Native Versus Introduced | |

For More Information Contact:
 Grand River Ranger District
 PO Box 390
 Lemmon, SD 57638
 605-374-3592



BLACKTAIL TRAIL

The Blacktail Trail is a 6.84 mile loop trail that traverses the rolling hills, buttes, and badland outcrops of this area. It is located in Pasture 9 on the Grand River National Grassland, approximately 16 miles south of Lemmon, South Dakota.

The Blacktail Trail is a non-motorized trail for hiking, biking, and horseback riding. Motorized vehicles are prohibited on the trail.

To ensure a safe and enjoyable trek on the Grassland, there are a few rules visitors should follow when visiting the Blacktail Trail.

- Wood posts branded with deer antlers are located along the trail to mark its location. From each post you should be able to see the next in either direction.
- Always tell someone where you are going and when you expect to return.
- Make sure you have adequate water to drink. No water facilities are provided along the trail.
- “Pack It In, Pack It Out.” Please carry out your garbage.
- Leave the gates as you find them.
- Prairie rattlesnakes are common throughout the grasslands.
- Do not harass or chase livestock.
- Weather in the Dakotas can change very quickly. Be prepared!

For more information about the Blacktail Trail, contact the Grand River Ranger District at 605-374-3592.

