



Deer Creek Lake TR. NO. 015 & 048

Escalante Ranger District, Dixie National Forest

General Description: A nice day hike to Deer Creek Lake and access to other lakes in the area. Can be made into a multi-day trip by combining other trails in the area.

Mileage: 3.0 miles

Difficulty: Foot: easy/moderate
Bike: easy/moderate
Horse: easy
OHV: not permitted, including E-bikes

Trailhead access: Graded dirt road

Elevation loss / gain: 690 feet

Water availability: Water is available at Deer Creek Lake and other nearby lakes and streams. Filter or treat all water.

Hazards / obstacles: Sections of the trail can be difficult to follow. Look for cairns and blazes marking the trail. Mosquitoes are prevalent in spring and early summer. Wear a long sleeve shirt and pants and use insect repellent. Weather can change quickly. Be prepared for cold weather year-round. Ridges, saddles, viewpoints and open meadows are dangerous during thunderstorms.

Topo maps: USGS 7.5 minute quads: Deer Creek Lake, Lower Bowns Reservoir

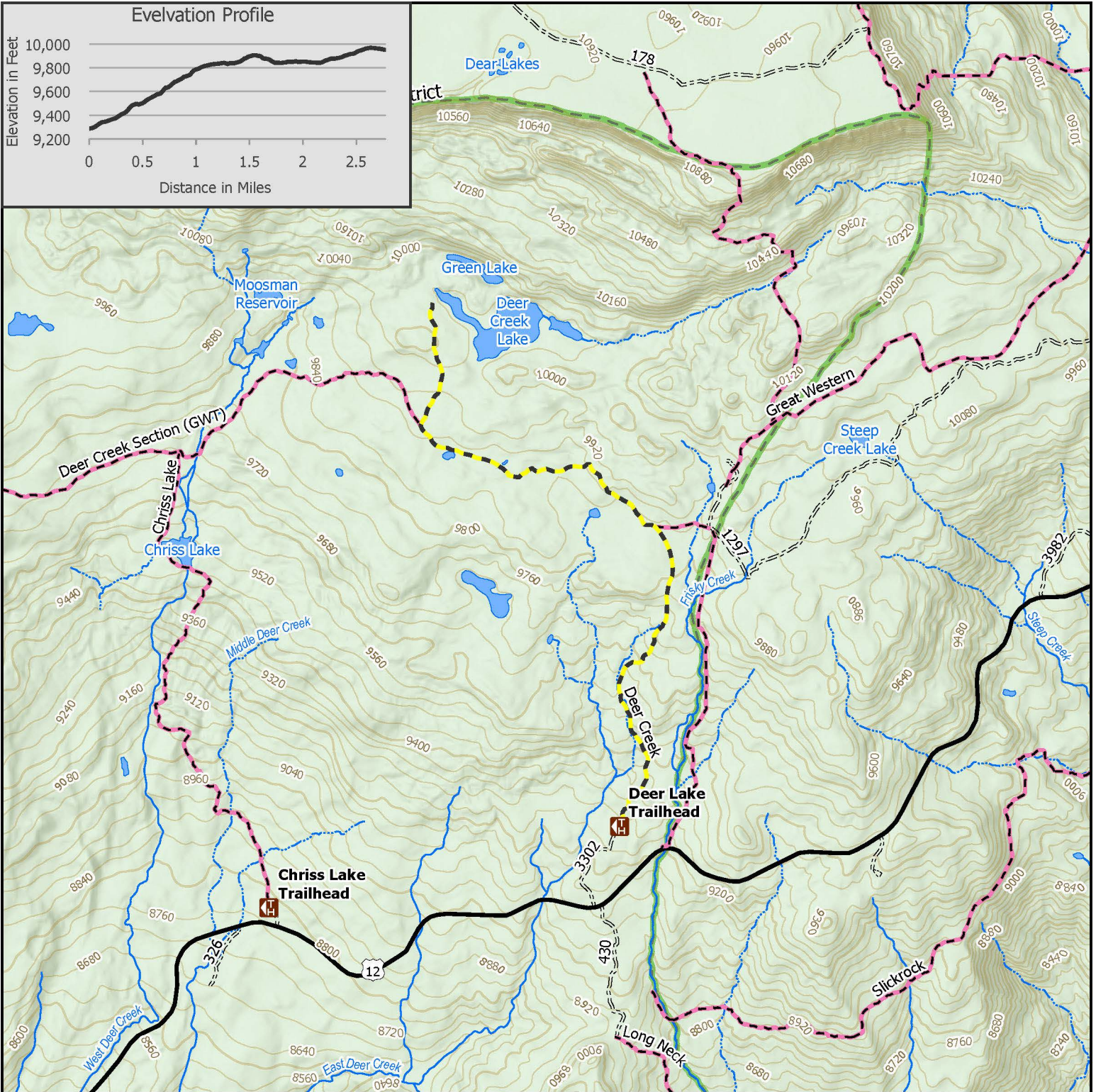
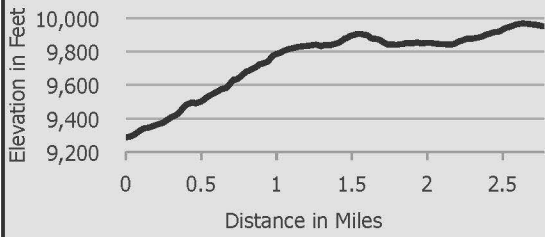
The Trailhead: The trailhead is north of Hwy 12 at approximately milepost 96.8 north of Boulder. There is a sign along the highway. Drive 0.4 miles to the parking area and trailhead register.

The Trail: The Deer Creek Lake area is a diverse ecosystem where pine forest, aspen stands, rock fields, meadows, wetlands and water all converge in a beautiful setting.

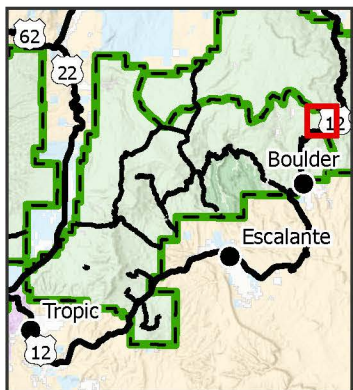
The trail threads through a few rock berms and a post fence then becomes well-defined. The trail climbs gradually until it intersects the Great Western Trail at 1.4 miles. Turn left (west) then at 2.5 miles a short trail leads north to Deer Creek Lake.

There are other small lakes in the vicinity. Hidden by a ridge just north of Deer Creek Lake is Green Lake - a long, narrow and deep lake in a boulder filled valley. The easiest access to Green Lake is from the northwest inlet to Deer Creek Lake. Circumvent the marshy inlet on the west, then go east over a small rise to the lake.

Elevation Profile



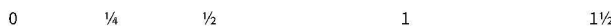
Vicinity Map



Deer Creek Lake

Escalante Ranger District, Dixie National Forest

- Trailhead
- Deer Creek Lake Trail
- Highway
- Forest Road (All Vehicles)
- Trail Non-Motorized
- Perennial Stream
- Intermittent Stream
- National Forest
- Forest Boundary



Scale: 1:31,000

The USDA Forest Service makes no warranty, expressed or implied, for the data displayed on this map, and reserves the right to correct, update, modify, or replace this information without notification.



Date 2/3/2025