

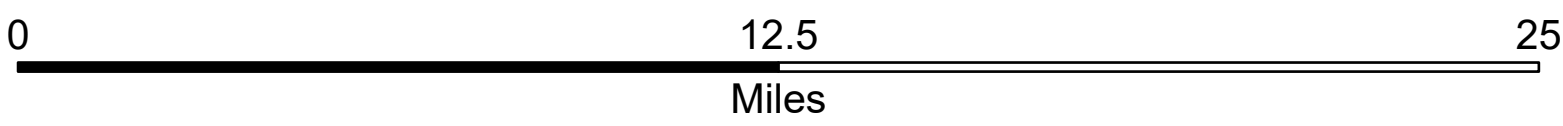
San Juan National Forest

FY24 Acquisitions and Conveyances

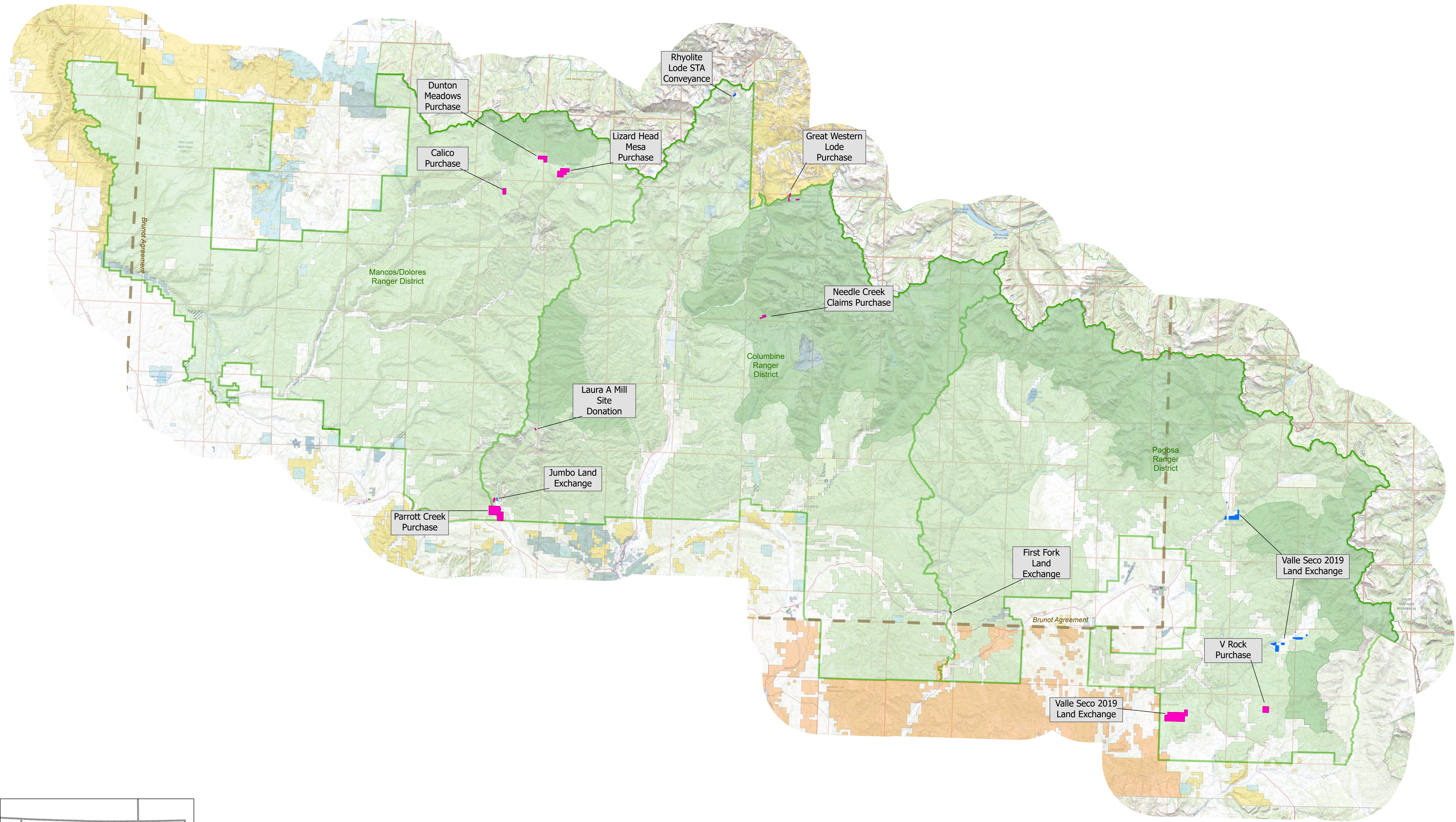
Map 1 - Overview

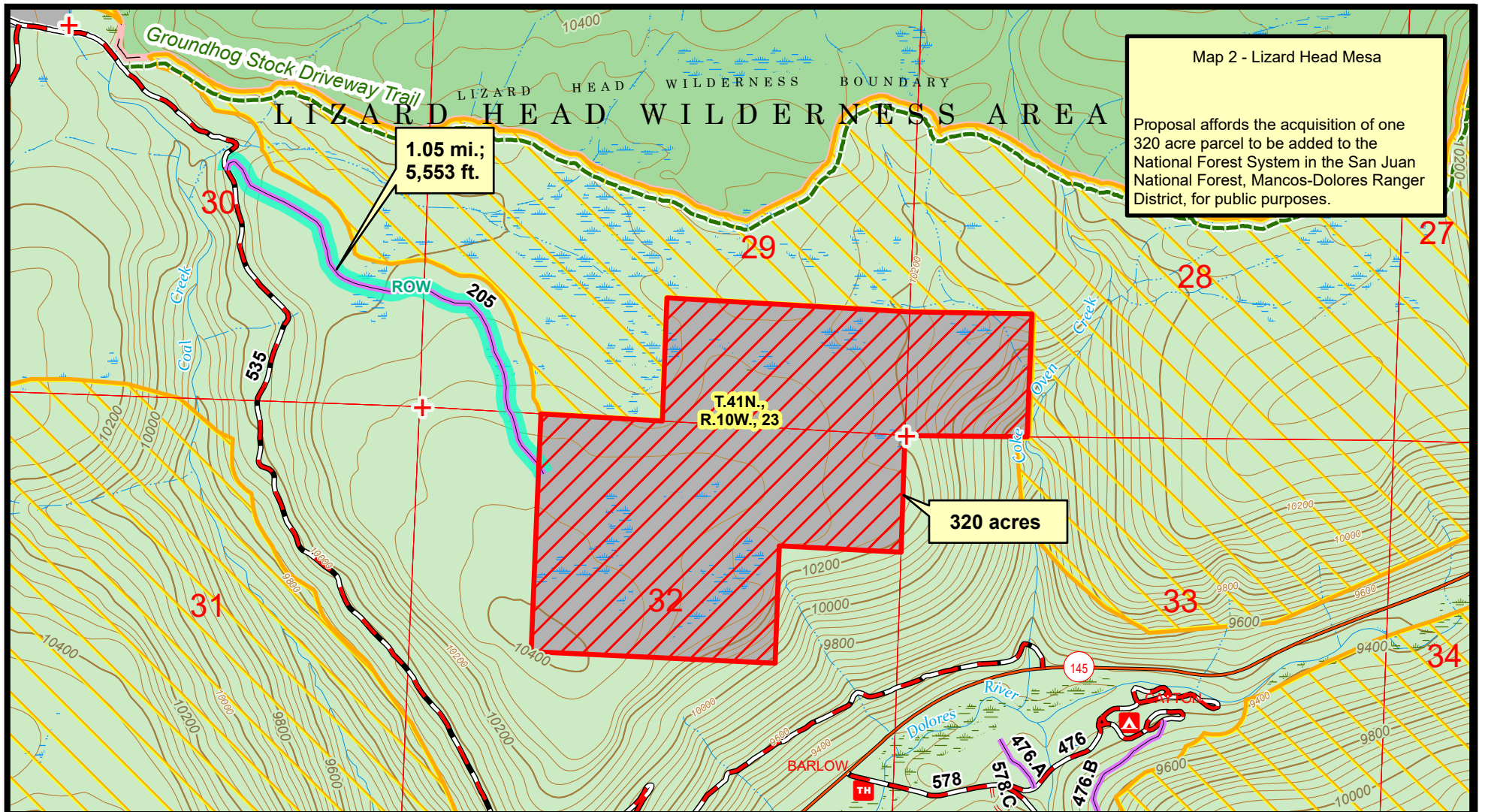
- Brunot Agreement Boundary
- Proposed Acquisition
- Proposed Conveyance

USDA Forest Service
San Juan National Forest



The USFS attempts to use the most current and complete geospatial data available. Geospatial data accuracy varies by theme on the map. Using this map for other than its intended purpose may yield inaccurate or misleading results. The USFS reserves the right to correct, update or modify geospatial inputs without notification.





Map 2 - Lizard Head Mesa

Proposal affords the acquisition of one 320 acre parcel to be added to the National Forest System in the San Juan National Forest, Mancos-Dolores Ranger District, for public purposes.

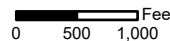


References

Map prepared by the U.S. Forest Service, Region 2, San Juan Forest Resource Information staff. Proposed parcel boundaries are general representations and do not represent legal boundary descriptions. Boundary Source: USFS Staff. Additional data sources: Forest ownership, roads and trails - USFS. Map Scale is 1:19,000 when printed at 8.5x11. Map coordinates in NAD83, UTM Zone 13 north.

Disclaimer

The USDA Forest Service makes no warranty, expressed or implied regarding the data displayed on this map, and reserves the right to correct, update, modify, or replace this information without notification.



Map Creation Date - 07-23-2024, NMW
Map Revision Date - 08-13-2024, NMW

- 6 Section
- Lizard Head Mesa - approx. 320-acre Acquisition Parcel
- Roadless Area
- Non - National Forest System Lands
- National Forest System Lands
- Wilderness Lands
- National Forest System Road
- National Forest System Road - Administrative Use Only
- National Forest System Trail
- + Survey Monument
- ROW Right-of-Way

Sheet 2 of 2

Lizard Head Mesa - 2024.07.23

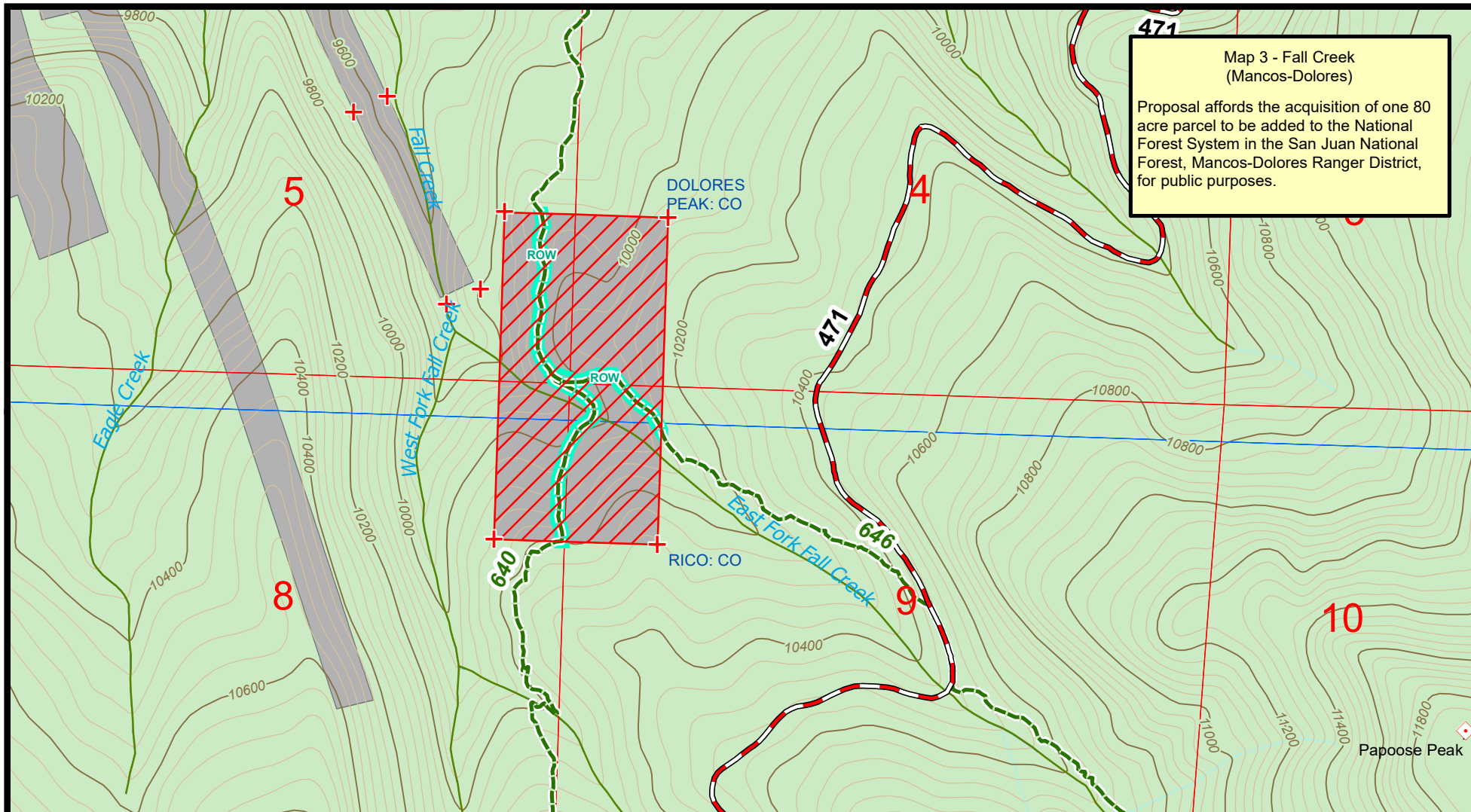
Map for Proposed Lizard Head Mesa Parcel Acquisition - Mancos-Dolores District

Parcel in Sections 28, 29 & 32, T.41N., R.10W., N.M.P.M. Dolores County, Colorado - Dolores Peak & Mount Wilson, CO, 7.5 min. Quadrangles



U.S. Forest Service - Rocky Mountain Region (R2)
San Juan National Forest
U.S. Congressional District 3, Colorado

Map prepared by staff at the San Juan National Forest Mancos-Dolores District in Dolores, CO. Copies of this map are available for public inspection in the Office of the Regional Forester, Rocky Mountain Region, Golden, Colorado.



**Map 3 - Fall Creek
(Mancos-Dolores)**

Proposal affords the acquisition of one 80 acre parcel to be added to the National Forest System in the San Juan National Forest, Mancos-Dolores Ranger District, for public purposes.



References

Map prepared by the U.S. Forest Service, Region 2, San Juan Forest Resource Information staff.
Proposed parcel boundaries are general representations and do not represent legal boundary descriptions.
Boundary Source: USFS Staff.
Additional data sources: Forest ownership, roads and trails - USFS.
Map Scale is 1:14,000 when printed at 8.5x11).
Map coordinates in NAD83, UTM Zone 13 north.

Disclaimer

The USDA Forest Service makes no warranty, expressed or implied regarding the data displayed on this map, and reserves the right to correct, update, modify, or replace this information without notification.

0 500 1,000 Feet

- 6 Section
- Fall Creek - approx. 80 acre Acquisition Parcel
- Non - National Forest System Lands
- National Forest System Lands
- 7.5 minute Topo Quadrangle
- + Survey Monument
- US-held Right-of-Way
- National Forest System Road
- National Forest System Trail

Map Creation Date - 05-01-2024, MDR
Map Revision Date - 05-01-2024, MDR

Sheet 2 of 2

Fall Creek - 2024.05.01

Map for Proposed Fall Creek Parcel Acquisition - Mancos-Dolores District

Parcel in Sections 4, 5, 8 & 9, T.40N., R.11W., N.M.P.M.
Dolores County, Colorado -- Dolores Peak and Rico, CO, 7.5 min. Quadrangles







U.S. Forest Service - Rocky Mountain Region (R2)
San Juan National Forest
U.S. Congressional District 3, Colorado

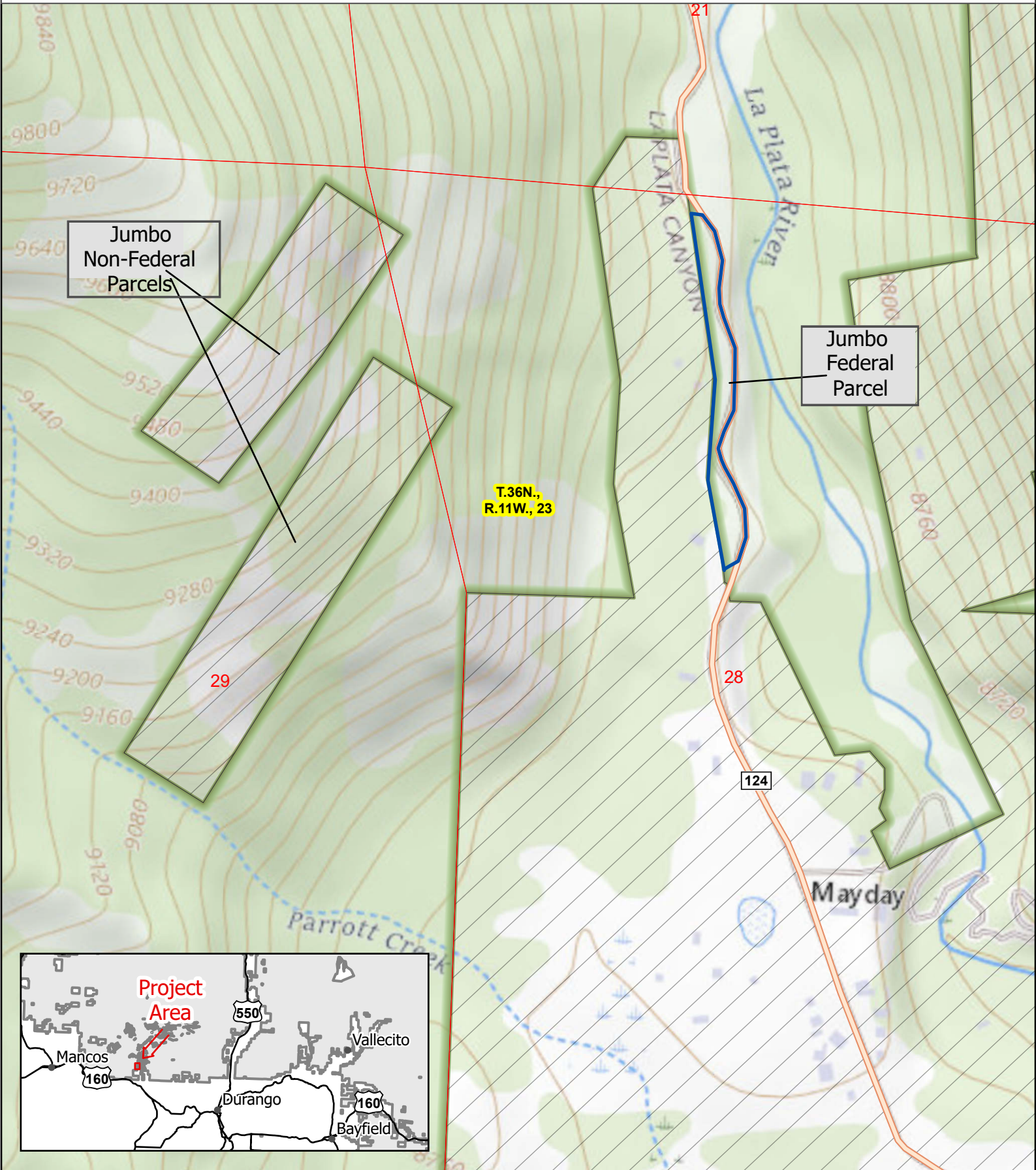
Map prepared by staff at the San Juan National Forest Headquarters in Durango, CO. Copies of this map are available for public inspection in the Office of the Regional Forester, Rocky Mountain Region, Golden, Colorado.

Map 4 *Jumbo Land Exchange*



-  National Forest
-  Private Land
-  Roads Open to All Vehicles, Yearlong
-  Other Public Roads

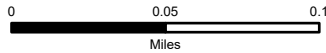
The USFS attempts to use the most current and complete geospatial data available. Geospatial data accuracy varies by theme on the map. Using this map for other than its intended purpose may yield inaccurate or misleading results. The USFS reserves the right to correct, update or modify geospatial inputs without notification.







Columbine Ranger District

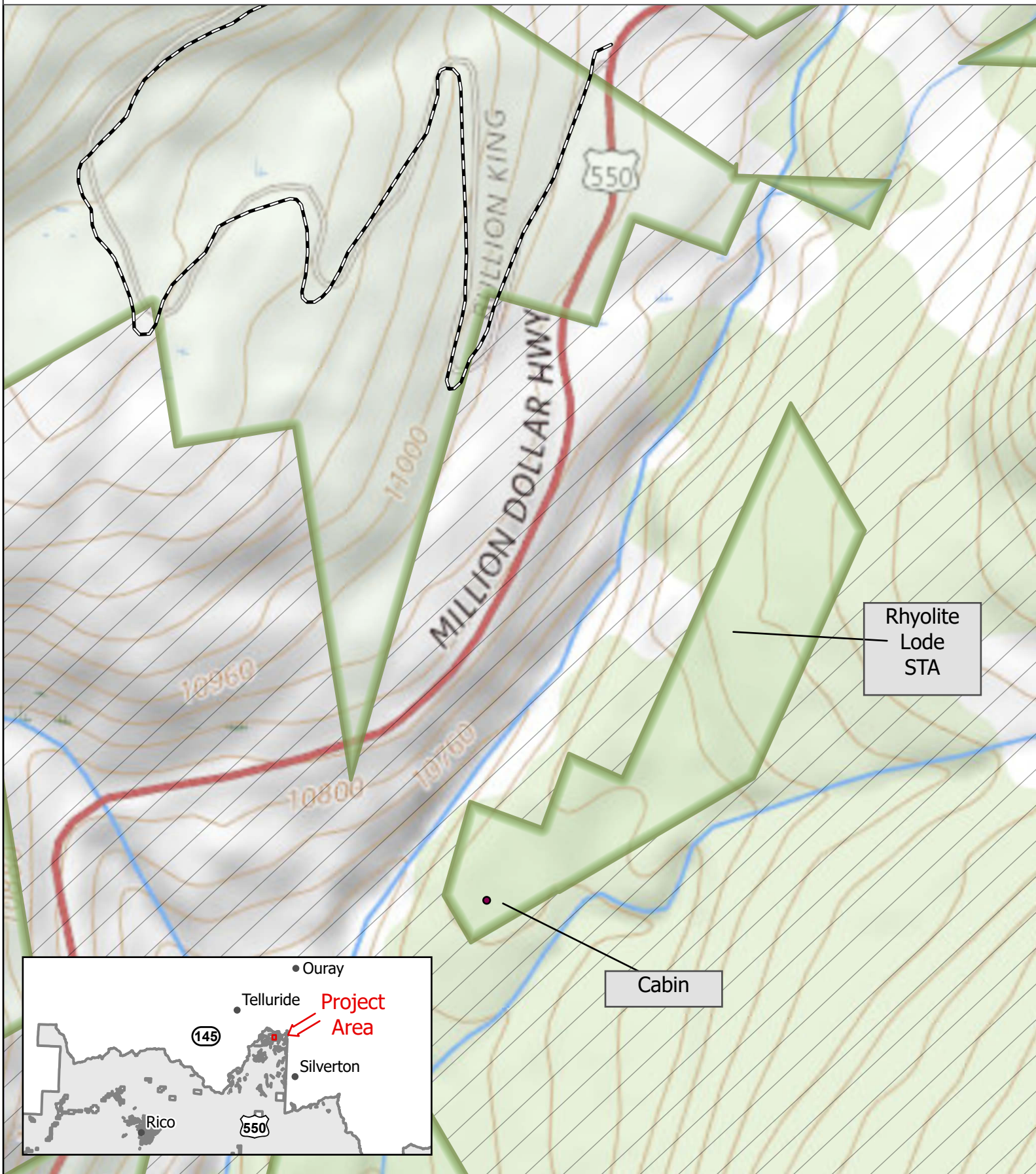
Map 5 *Rhyolite Lode*
STA

USDA Forest Service
San Juan National Forest
Columbine Ranger District

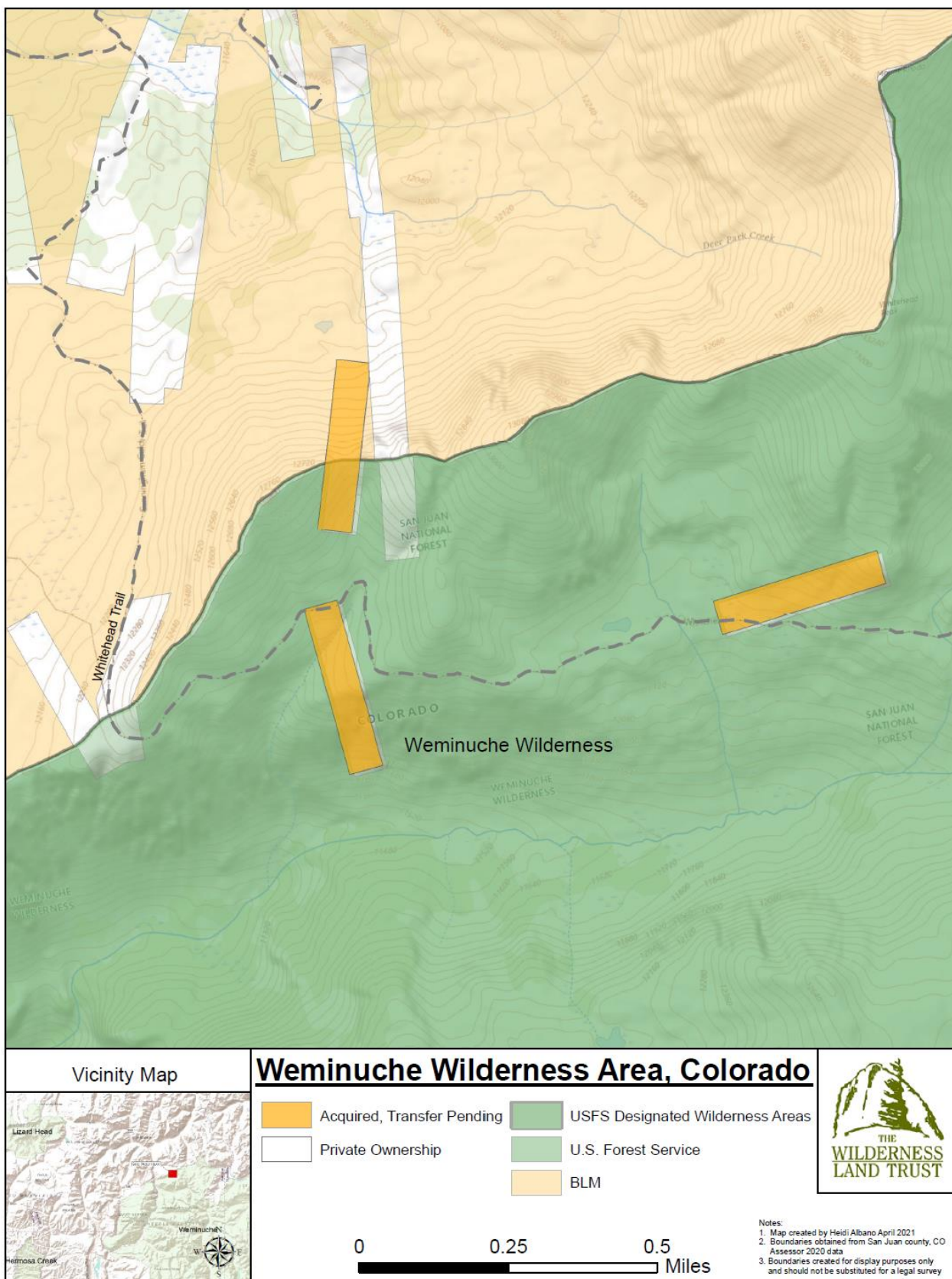


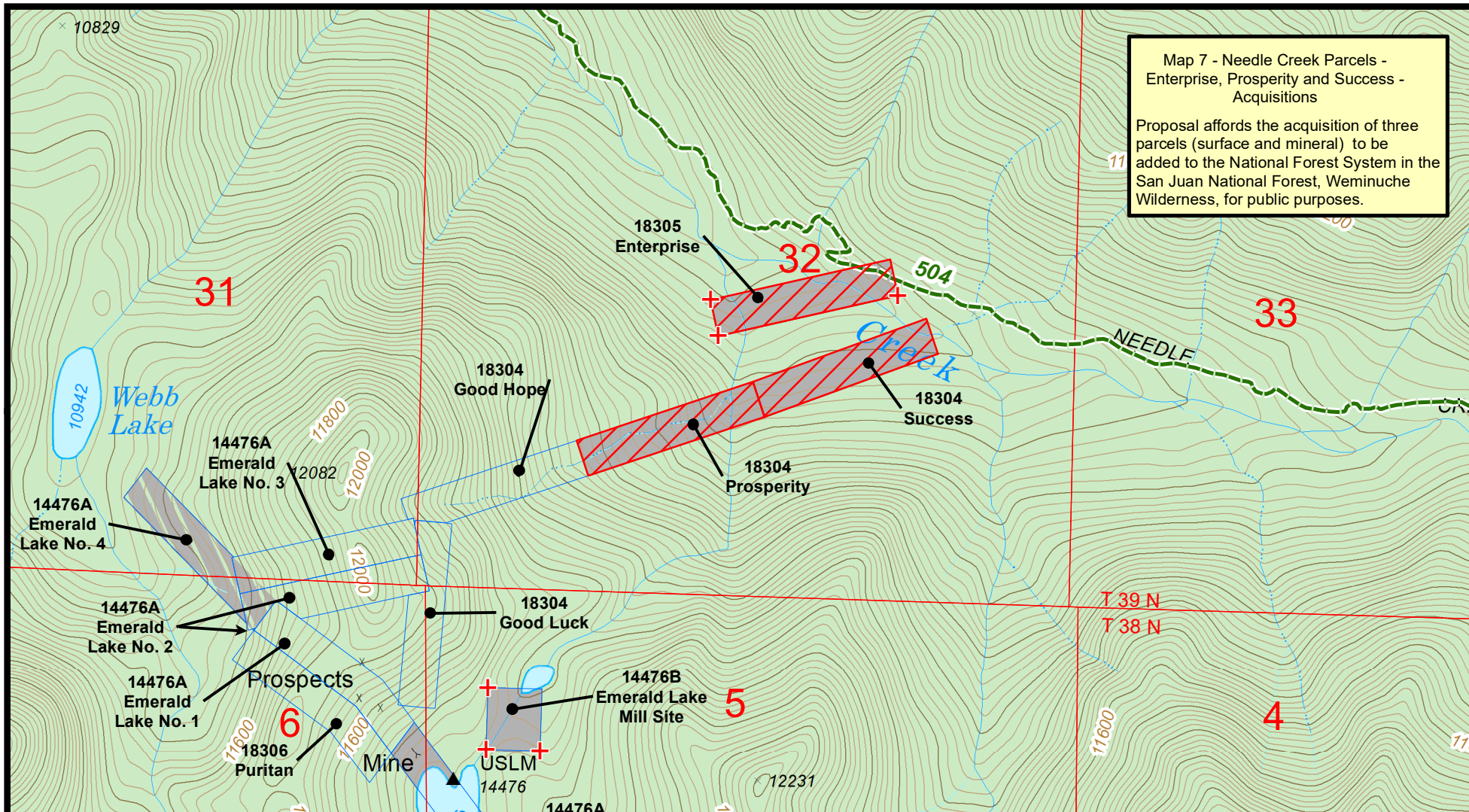
-  NF
-  PRIVATE
-  Roads Open to All Vehicles, Yearlong
-  Other Public Roads

The USFS attempts to use the most current and complete geospatial data available. Geospatial data accuracy varies by theme on the map. Using this map for other than its intended purpose may yield inaccurate or misleading results. The USFS reserves the right to correct, update or modify geospatial inputs without notification.



Map 6 - Great Western Lode





References

Map prepared by the U.S. Forest Service, Region 2, San Juan Forest Resource Information staff.
Proposed parcel boundaries are general representations and do not represent legal boundary descriptions.
Boundary Source: La Plata County and USFS Staff.
Additional data sources: Forest ownership, roads and trails - USFS.
Map Scale is 1:14,000 when printed at 8.5x11).
Map coordinates in NAD83, UTM Zone 13 north.

Disclaimer

The USDA Forest Service makes no warranty, expressed or implied regarding the data displayed on this map, and reserves the right to correct, update, modify, or replace this information without notification.

0 500 1,000 Feet

- Section
- Needle Creek Claims - Acquisition Parcels
- Non - National Forest System Lands
- National Forest System Lands
- Federal Mineral Estate Only
- Mineral Survey
- + Survey Monument
- National Forest System Trail
- ▲ Monument - Mineral/Location

Map Creation Date - 01-21-2024, MDR
Map Revision Date - 01-21-2024, MDR

Sheet 2 of 2

Needle Creek Claims - 2024.01.21

Map for Proposed Needle Creek Claims Parcel Acquisition - Enterprise, Prosperity, Success

Parcels in T.39.N. R.7.W. S1/2 Sec. 32, N.M.P.M.
La Plata County, Colorado -- Mountain View Crest Quadrangle



U.S. Forest Service - Rocky Mountain Region (R2)
San Juan National Forest
U.S. Congressional District 3, Colorado

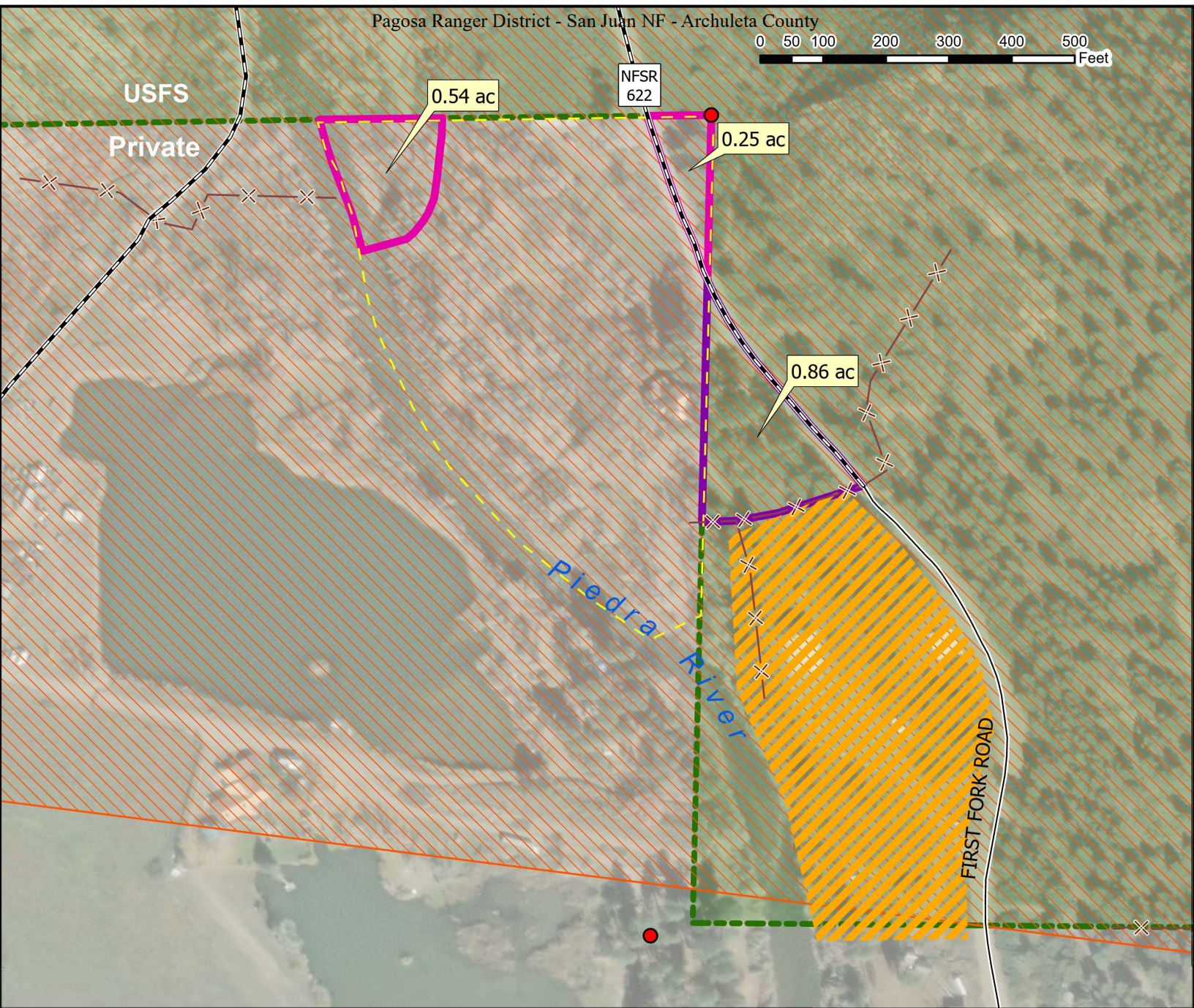
Map prepared by staff at the San Juan National Forest Headquarters in Durango, CO. Copies of this map are available for public inspection in the Office of the Regional Forester, Rocky Mountain Region, Golden, Colorado.



Map 8 - Proposed First Fork Land Exchange

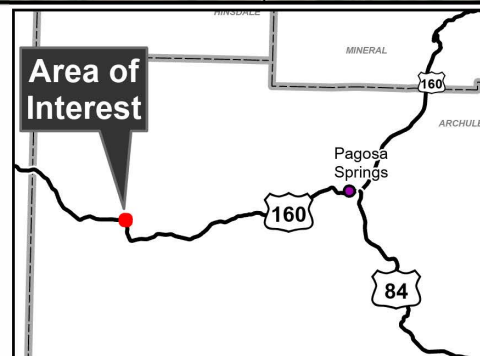
T34N, R4W, Sec 8
NMPM

KDT 11/9/2023



Legend

- | | | |
|-----------------------------|--|--|
| Proposed Federal Parcel | Associated Private Parcel | |
| Proposed Non-Federal Parcel | Suitable Wild & Scenic River Corridor | |
| Survey Monument | National Forest Service Boundary | |
| Fence | Surface Ownership (transparent overlay) | |
| National Forest System Road | Private Lands | |
| County Road | National Forest | |
| Special Use - CDOT | | |



DISCLAIMER: GIS data and product accuracy may vary. The Forest Service reserves the right to correct, update, modify, or replace GIS products without notification. For more information, contact the San Juan NF, Durango, CO. (970) 247-4874