

PURPOSE AND CONTENTS OF THIS MAP

The designations shown on this over snow vehicle use map (OSVUM) were made by the responsible official pursuant to 36 CFR 212.80, Subpart C, are effective as of the date on the front cover of this OSVUM, and will remain in effect until superseded by the next OSVUM update.

Steve Juelser
Forest Supervisor, Caribou-Targhee National Forests

It is the responsibility of the user to acquire the current OSVUM. This OSVUM shows the National Forest System roads, National Forest System snow trails, and the areas on National Forest System lands in the Westside Ranger District and Curlew National Grassland that are open to over snow vehicles pursuant to 36 CFR 212.80. It also shows designated routes and groomed snowmachine trails.

Designation of a road, trail, or area for over snow use by a particular class of vehicle under 36 CFR 212.80 should not be interpreted as encouraging or inviting use or implying that the road, trail, or area is passable, actively maintained, or safe for travel. Motor vehicle designations include parking along designated routes and at facilities associated with designated routes when it is safe to do so and when not causing damage to National Forest System resources. Seasonal weather conditions and natural events may change rapidly and render designated roads and snow trails impassable for extended periods. Designated areas may contain dangerous or impassable terrain. Designated roads and snow trails may receive little or no maintenance.

This motor vehicle use map identifies those roads, snow trails, and areas designated for motor vehicle use under 36 CFR 212.80 for the purpose of enforcing the prohibition at 36 CFR 261.14. This is a limited purpose. The other public roads are shown for information and navigation purposes only and are not subject to designation under the Forest Service travel management regulation.

These designations apply only to National Forest System roads, National Forest System trails, and areas on National Forest System lands.

PROHIBITIONS

It is prohibited to possess or operate a motor vehicle on National Forest System lands on the Westside Ranger District and Curlew National Grassland other than in accordance with these designations (36 CFR 261.14).

Violators of 36 CFR 261.14 are subject to a fine of up to \$5,000, imprisonment for up to 6 months or both (18 U.S.C. 3571(e)). This prohibition applies regardless of the presence or absence of signs.

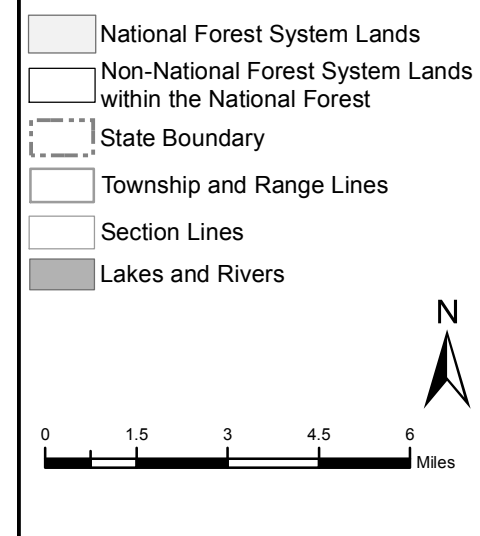
This map does not display nonmotorized uses or other facilities and attractions on the Westside Ranger District and Curlew National Grassland. Obtain forest visitor information from the local national forest office.

Designated roads, snow trails, and areas may also be subject to temporary, emergency closures. As a visitor, you must comply with signs notifying you of such restrictions. A national forest may issue an order to close a road, snow trail, or area on a temporary basis to protect the life, health, or safety of forest visitors or the natural or cultural resources in these areas. Such temporary and/or emergency closures are consistent with the Travel Management Rule (36 CFR 212.51 (b), 36 CFR 261 subpart B).

The designation "road or trail open to all motor vehicles" does not supersede State traffic law.

Legend

- Groomed Snowmobile Trails
- Trails Open to Over Snow Vehicles, Trails Not Maintained
- Areas Closed to Over Snow Use
- Warming Hut
- Winter Parking Area
- Winter Trailhead
- Information Site
- Forest or Unit Boundary
- Interstate
- Highways, US, State
- Other Public Roads
- Other Public Trails
- Information Site
- National Forest System Lands
- Non-National Forest System Lands within the National Forest
- State Boundary
- Township and Range Lines
- Section Lines
- Lakes and Rivers



WEBSITE

This map and other Caribou-Targhee National Forest maps are available for download at the website:

www.fs.usda.gov/detail/ctnfm/maps-pubs



Scan the QR code to download Over Snow Vehicle Use Maps for Avenza

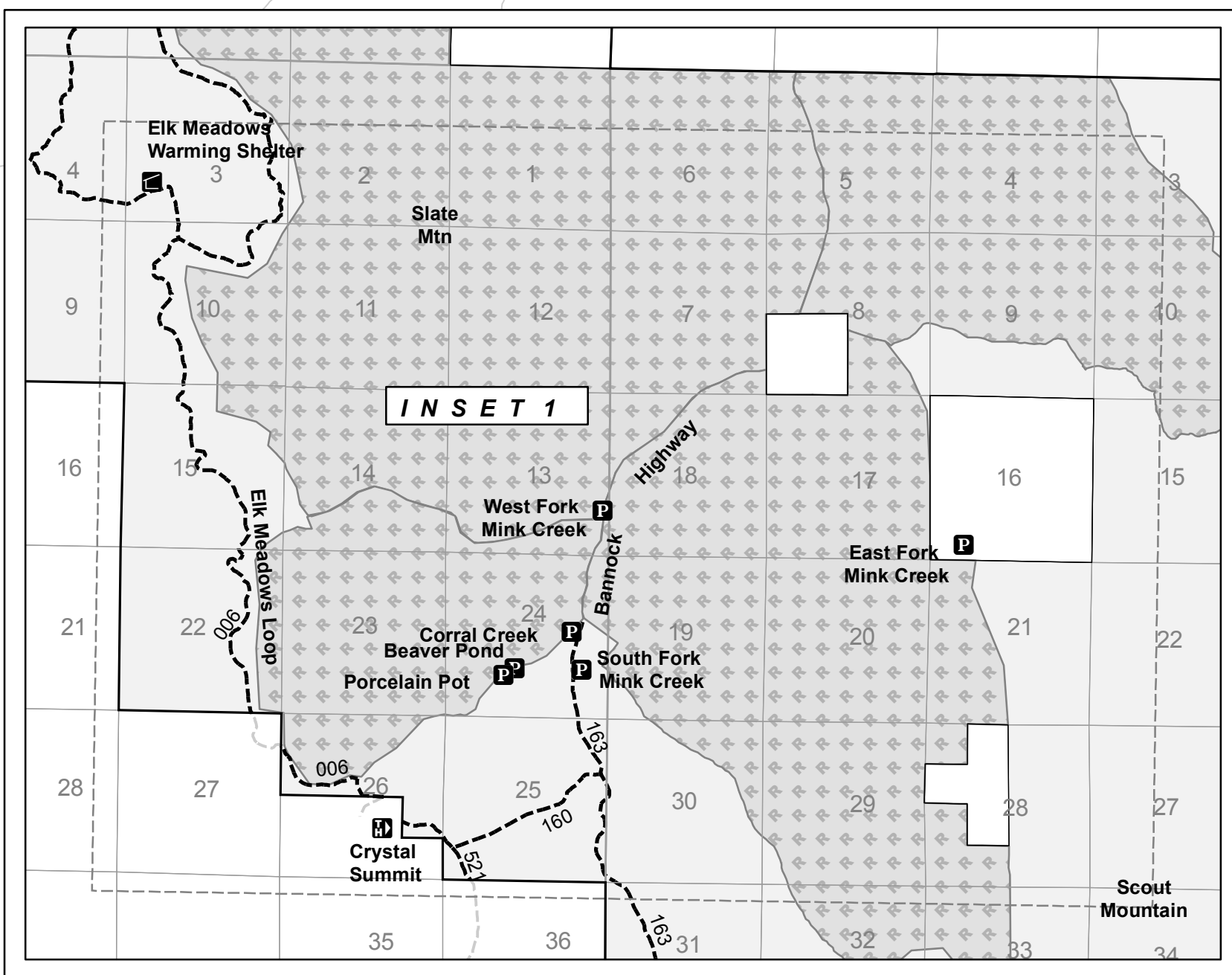
EXPLANATION OF LEGEND ITEMS

Trails Open to Over Snow Vehicles, Trails Not Maintained:

These trails are open to over snow vehicles. These trails are not plowed or groomed for snowmobile use. You must stay on trails through restricted areas.

Disclaimer: This Winter Over Snow Map is intended to show winter motorized opportunities on the Westside Ranger District and Curlew National Grassland. In general, the Forest is open to motorized use except in Restricted Areas. Roads are shown on this snow season map for reference information only.

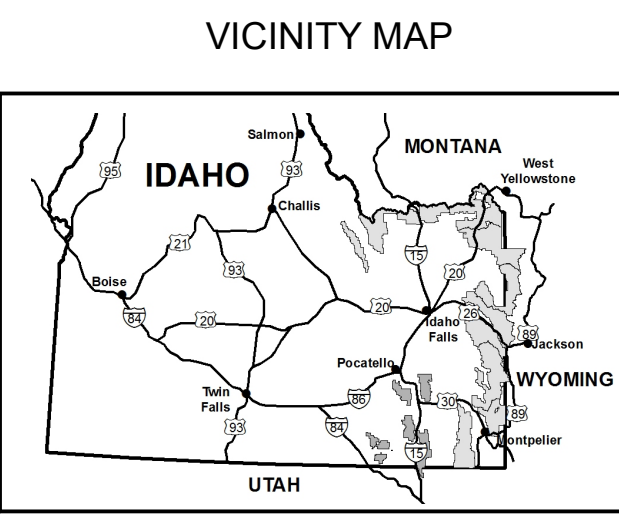
Only oversnow decisions should be made based on this map. This winter map should not be used to make wheeled motorized decisions.



America's Great Outdoors
Idaho, Utah
Forest Service
2016/17

Westside Ranger District & Curlew National Grassland

National Forests
Caribou-Targhee
Vehicle Use Map
Over Snow



Information Sources:

Important Phone Numbers

Emergency Services911
Idaho State Police208-392-4411 or *ISP

Bannock County Sheriff208-236-7111
Caribou County Sheriff208-547-2561
Power County Sheriff208-285-2319
Franklin County Sheriff208-852-1234
Oneida County Sheriff208-766-2251

Report a Fish or Game Violation 1-800-632-5999
Report a Snowmachine Violation 208-236-7500

Westside Ranger District
Pocatello Office
4350 South Cliffs Drive
Pocatello, Idaho 83204
(208) 236-7500

Caribou - Targhee National Forest
1405 Hollipark Drive
Idaho Falls, Idaho 83401
(208) 524-7500
www.fs.usda.gov/ctnfm

OPERATOR RESPONSIBILITIES

Operating a motor vehicle on National Forest System roads, National Forest System snow trails, and in areas on National Forest System lands carries a greater responsibility than operating that vehicle in a city or other developed setting. Not only must you know and follow all applicable traffic laws, you need to show concern for the environment as well as other forest users. The misuse of motor vehicles can lead to the temporary or permanent closure of any designated road, snow trail, or area. As a motor vehicle operator, you are subject to State traffic law, including State requirements for licensing, registration, and operation of the vehicle in question.

Motor vehicle use, especially over snow vehicle use, involves inherent risks that may cause property damage, serious injury, and possibly death to participants. Drive cautiously and anticipate rough surfaces and features, such as snow, mud, vegetation, and water crossings common to remote driving conditions. By your participation, you voluntarily assume full responsibility for these damages, risks, and dangers. Take care at all times to protect yourself and those under your responsibility.

Much of the Westside Ranger District and Curlew National Grassland is remote. Medical assistance may not be readily available. Cellular telephones do not work in many areas of the Westside Ranger District and Curlew National Grassland. Take adequate food, water, first-aid supplies, and other equipment appropriate for the conditions and expected weather.

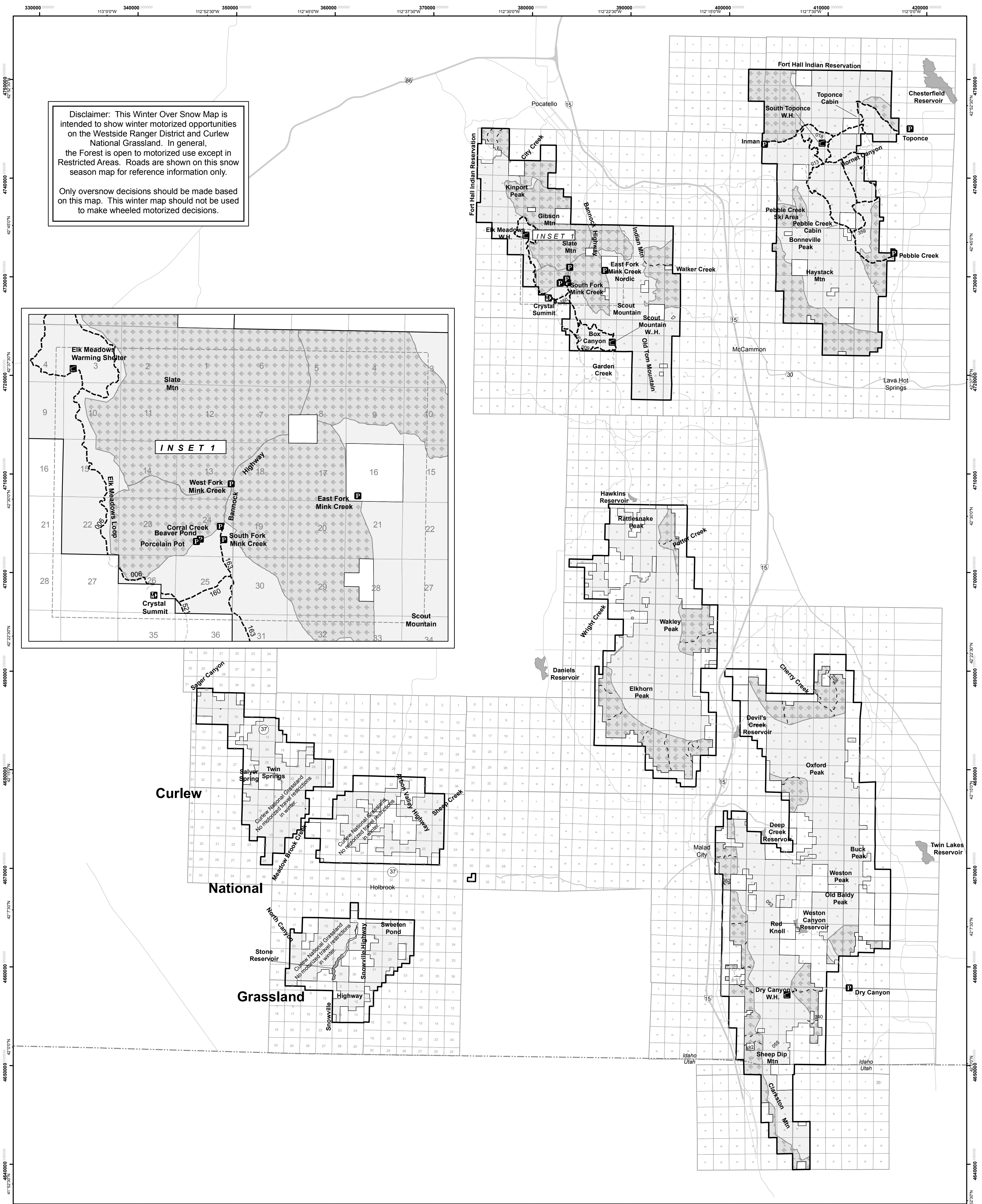
ALWAYS REMEMBER TO RESPECT PRIVATE LAND! PROTECT YOUR PRIVILEGE. STAY ON DESIGNATED ROADS, TRAILS AND IN DESIGNATED AREAS.

Read and understand this map in its entirety. If you have questions, please contact the Westside Ranger District for clarification.

As a motor vehicle operator on a National Forest System road, snow trail, or area, you must comply with this map, as well as all Federal, State, and local laws and regulations. Compliance with these rules is your responsibility.



USDA is an equal opportunity provider, employer, and lender.



Trails Groomed for Snowmobile Use:
These trails are open to over snow vehicles. These trails are groomed for snowmobile use. You must stay on trails through restricted areas.

Areas With Oversnow Restrictions
These are areas on National Forest System land that do not allow passage of motorized vehicles except on designated routes.

Other Public Roads and Trails:
These symbols are used to show routes that the Forest Service does have not jurisdiction over and has not designated for motorized use. These symbols are part of the reference layers showing connections to towns and cities outside the forest boundary.

Winter Trailhead:
This symbol indicates a trailhead for access to a motorized route. Not all motorized routes have trailheads and those that do may have minimum amenities (i.e. toilets).

Parking Area:
This symbol indicates a parking area for access to a motorized route. Parking areas generally provide for limited parking with no amenities.

Warming Shelter:
This symbol indicates a facility where winter recreationists may choose to rest and/or get warm.