


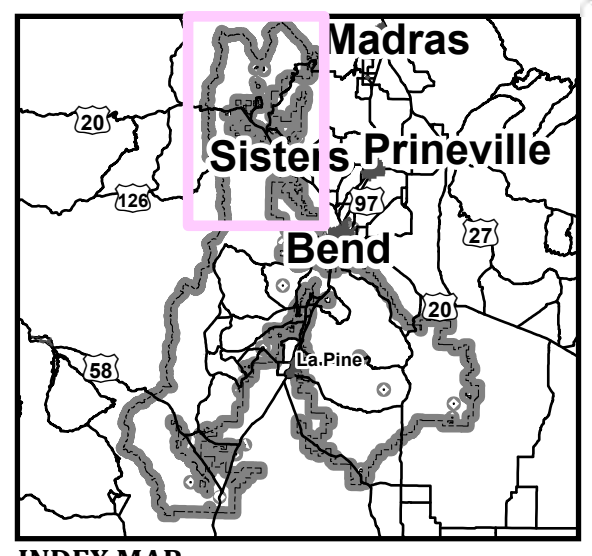
Deschutes National Forest Sisters Ranger District Woodcutting Map

May 1, 2025 **2025** November 30, 2025
OPENS: **CLOSES:**

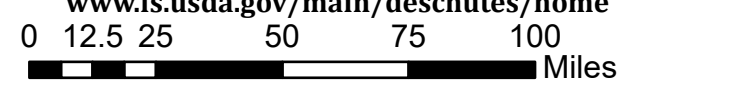
This product is reproduced from information prepared by the USDA, Forest Service. The Forest Service cannot assure the reliability or suitability of this information for a particular purpose. The data and product accuracy may vary due to compilation from various sources, including modeling and interpretation, and may not meet National Map Accuracy Standards. This information may be updated, corrected or otherwise modified without notification.

Neither the Forest Service, nor any of its employees, makes any warranty expressed or implied, including the warranties of merchantability and fitness for a particular purpose, or assumes any legal liability or responsibility for the accuracy, completeness, or usefulness of any information, apparatus, product or process disclosed, or represents that its use would not infringe privately owned rights.

USDA 

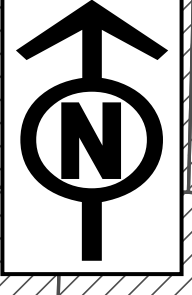


INDEX MAP
FOR MORE INFORMATION, CONTACT:
Deschutes National Forest/Sisters Ranger District
Hwy 20 and Pine St.
Sisters, OR 97759
(541) 549-7700
www.fs.usda.gov/main/deschutes/home

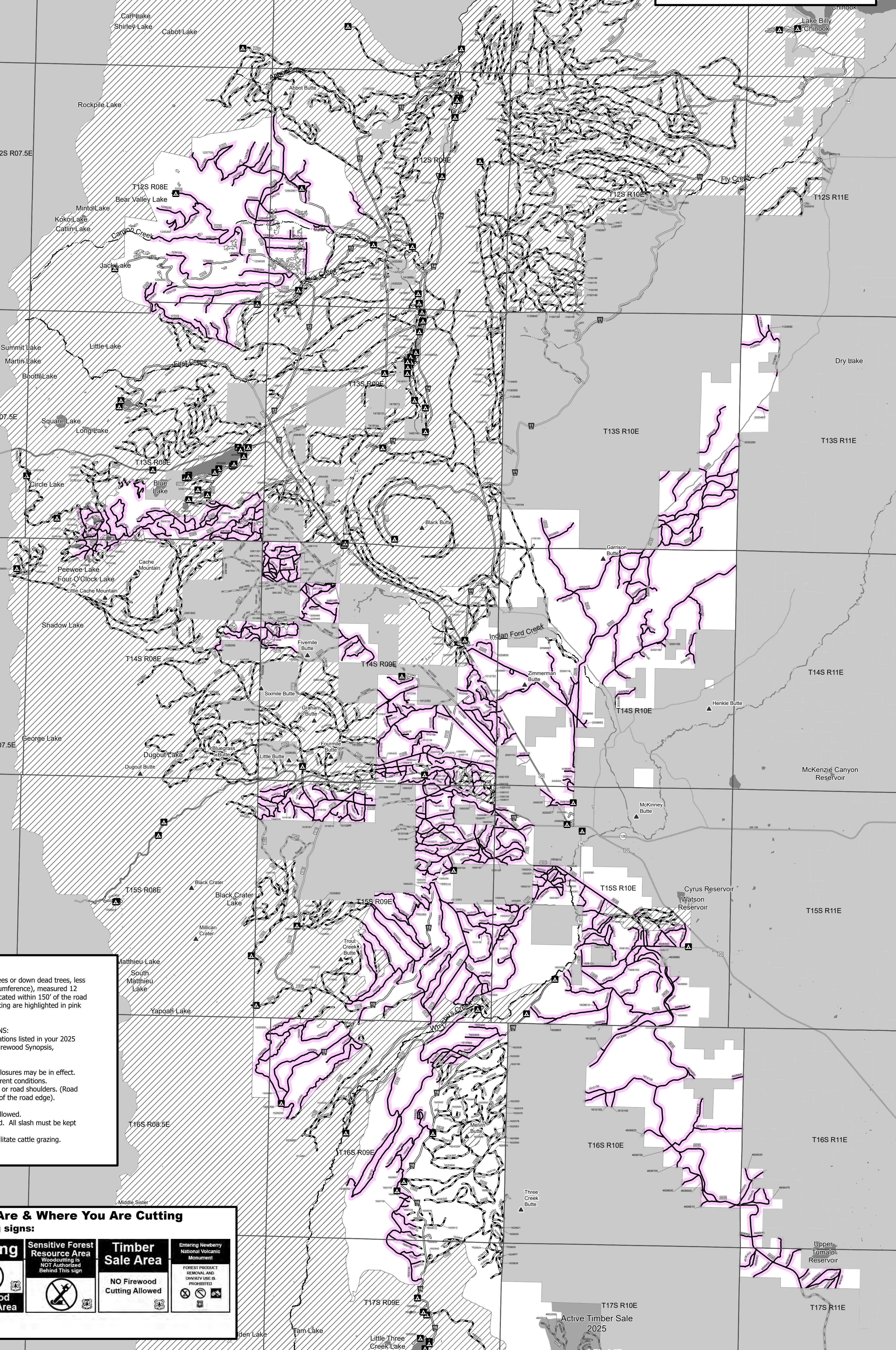


Legend

Roads Allow for Woodcutting	Motor Vehicle Use Roads
No Woodcutting Areas	1 Roads Open to All Vehicles, Yearlong
Active Timber Sale - No Woodcutting Area	2 Roads Open to All Vehicles, Seasonal
Non Forest Service Lands	3 Roads Open to Highway Legal Vehicles Only, Yearlong
Lake	4 Roads Open to Highway Legal Vehicles Only, Seasonal
Streams	14 State or US Highway
Developed Recreation Site	15 Other Public Roads
Mountain Peak	



T10S R07E
T11S R07E
T12S R07E
T13S R07E
T14S R07E
T15S R07E
T16S R07E
T17S R07E



YOU CAN CUT AND REMOVE:
All species of standing dead trees or down dead trees, less than 24" in diameter (75" circumference), measured 12 inches above the root collar, located within 150' of the road edge. Roads open to woodcutting are highlighted in pink on map.

AREA RULES AND REGULATIONS:
In addition to Rules and Regulations listed in your 2025 Central Oregon Personal Use Firewood Synopsis, the following rules apply:

- Temporary emergency fire closures may be in effect. Check with local district for current conditions.
- Vehicles must stay on roads or road shoulders. (Road shoulder defined as within 20' of the road edge). Off-road travel is not allowed.
- No winching of material is allowed. All slash must be kept clear of roads and ditches.
- Leave gates as found to facilitate cattle grazing.

Know Where You Are & Where You Are Cutting
Watch for the following signs:

Entering Firewood Cutting Area	Leaving Firewood Cutting Area	Sensitive Forest Resource Area Woodcutting is NOT Authorized Behind This Sign	Timber Sale Area NO Firewood Cutting Allowed	Entering Newberry National Volcanic Monument FOREST PRODUCT REMOVAL AND OFF-ROAD USE IS PROHIBITED
---------------------------------------	--------------------------------------	---	--	--