

2025

New Mexico

America's Great Outdoors



Cibola National Forest

Ranger District

Magdalena

Use Map

Motor Vehicle

U.S. DEPARTMENT OF AGRICULTURE

FOREST SERVICE

USDA

VICINITY MAP



INFORMATION SOURCES

For National Forest Information Contact:

Cibola National Forest Supervisor's Office  
2113 Osuna Road NE  
Albuquerque, NM 87113-4650  
(505) 346-3900  
<http://www.fs.usda.gov/cibola>

Magdalena Ranger Station  
203 First St.  
Magdalena, NM 87825  
(575) 854-2281

Emergency Assistance:  
In the event of emergency call 911

For Mountain Search and Rescue:  
New Mexico State Police  
(575) 835-0741

For County Law Enforcement:  
Socorro County Sheriff's Office  
(575) 835-0941

Catron County Sheriff's Office  
(575) 533-6222

Sierra County Sheriff's Office  
(575) 984-0150

FOREST SERVICE

U.S.

DEPARTMENT OF AGRICULTURE

treadlightly!

TRAVEL & ECOLOGICAL RESPONSIBILITY

Travel Responsibility on land by staying on designated roads, trails, and areas.

Respect the Rights of Others including private property owners, all recreational trail users, campers, and others so they can enjoy their recreational activities undisturbed

Educate Yourself prior to your trip by obtaining travel maps and regulations from public agencies.

Avoid Sensitive Areas on land such as meadows, lake shores, wetlands, and streams.

Do Your Part by modeling appropriate behavior, leaving the area better than you found it properly disposing of waste, minimizing the use of fire, avoiding the spread of invasive species, and repairing degraded areas.

For more information on Tread Lightly!, go to [www.treadlightly.org](http://www.treadlightly.org) or call 1-800-966-9900.


In accordance with Federal civil rights law and U.S. Department of Agriculture (USDA) civil rights regulations and policies, the USDA, its Agencies, offices, and employees, and institutions participating in or administering USDA programs are prohibited from discriminating based on race, color, national origin, religion, sex, disability, age, marital status, family/parental status, income derived from a public assistance program, political beliefs, or reprisal or retaliation for prior civil rights activity, in any program or activity conducted or funded by USDA (not all bases apply to all programs). Remedies and complaint filing deadlines vary by program or incident.

Persons with disabilities who require alternative means of communication for program information (e.g., Braille, large print, audiotape, American Sign Language, etc.) should contact the State or local Agency that administers the program or contact USDA through the Telecommunications Relay Service at 711 (voice and TTY). Additionally, program information may be made available in languages other than English.

To file a program discrimination complaint, complete the USDA Program Discrimination Complaint Form, AD-3027, found online at [How to File a Program Discrimination Complaint](https://www.usda.gov/about-usda/general-information/staff-offices/office-assistant-secretary-civil-rights/how-to-file-a-program-discrimination-complaint) (<https://www.usda.gov/about-usda/general-information/staff-offices/office-assistant-secretary-civil-rights/how-to-file-a-program-discrimination-complaint>) and at any USDA office or write a letter addressed to USDA and provide in the letter all of the information requested in the form. To request a copy of the complaint form, call (866) 632-9992. Submit your completed form or letter to USDA by: (1) mail: U.S. Department of Agriculture, Office of the Assistant Secretary for Civil Rights, 1400 Independence Avenue, SW, Mail Stop 9410, Washington, D.C. 20250-9410; (2) fax: (202) 690-7442; or (3) email: [program.intake@usda.gov](mailto:program.intake@usda.gov). USDA is an equal opportunity provider, employer, and lender.

POURPOSE AND CONTENTS OF THIS MAP

The designations shown on this motor vehicle use map (MVUM) were made by the responsible official pursuant to 36 CFR 212.51, are effective as of the date on the front cover of this MVUM and will remain in effect until superseded by next year's MVUM.



Forest Supervisor, Cibola National Forest

It is the responsibility of the user to acquire the current MVUM. This MVUM shows the National Forest System roads, National Forest System trails, and the areas on National Forest System lands on the Magdalena Ranger District of the Cibola National Forest that are designated for motor vehicle use pursuant to 36 CFR 212.51. This MVUM also identifies the vehicle classes allowed on each route and in each area; and any seasonal restrictions that apply on those routes and in those areas.

Designation of a road, trail, or area for motor vehicle use by a particular class of vehicle under 36 CFR 212.51 should not be interpreted as encouraging or inviting use or implying that the road, trail, or area is passable, actively maintained, or safe for travel. Motor vehicle designations include parking along designated routes and at facilities associated with designated routes when it is safe to do so and when not causing damage to National Forest System resources. Seasonal weather conditions and natural events may render designated roads and trails impassable for extended periods. Designated areas may contain dangerous or impassable terrain. Many designated roads and trails may be passable only by high-clearance vehicles or four-wheel-drive vehicles. Maintenance of designated roads and trails will depend on available resources, and many may receive little maintenance.

This motor vehicle use map identifies those roads, trails, and areas designated for the motor vehicle use under 36 CFR 212.51 for the purpose of enforcing the prohibition at 36 CFR 261.13. This is a limited purpose. The other public roads are shown for information and navigation purposes only and are not subject to designation under the Forest Service travel management regulation.

These designations apply only to National Forest System roads, National Forest System trails, and areas on National Forest System lands.

PROHIBITIONS

It is prohibited to possess or operate a motor vehicle on National Forest System lands on the Magdalena Ranger District of the Cibola National Forest other than in accordance with these designations (36 CFR 261.13).

Violators of 36 CFR 261.13 are subject to a fine of up to \$5,000, imprisonment for up to 6 months, or both (18 U.S.C. 3371e). This prohibition applies regardless of the presence or absence of signs.

This map does not display nonmotorized uses, over-snow vehicle uses, or other facilities and attractions on the Magdalena Ranger District of the Cibola National Forest. Obtain forest visitor information from the local national forest office.

Designated roads, trails and areas may also be subject to temporary emergency closures. As a visitor, you must comply with signs notifying you of such restrictions. A national forest may issue an order to close a road, trail or area on a temporary basis to protect the life, health, or safety of forest visitors or the natural or cultural resources in these areas. Such a temporary and/or emergency closure are consistent with the Travel Management Rule (36 CFR 212.52 (b), 36 CFR 261 subpart B).

The designation "road or trail open to all motor vehicles" does not supersede State traffic law.

Legend

Roads Open to All Vehicles

Dispersed Camping/Game Retrieval, Both Sides (See table for DCGR information)

Interstate

Highways, U.S. State

Other Public Roads

Short Route Identifier

FS Campground

Picnic Area

Motorized Trailhead

Information Site

Peaks

Forest or Unit Boundary

National Forest System Lands

Non-National Forest System Lands within the National Forest

Wilderness Areas

Political Boundary

Township and Range Lines

Section Lines

0 0.5 1 2 3 Miles

N

EXPLANATION OF LEGEND ITEMS

Roads Open to All Vehicles:

These roads are open to all motor vehicles, including smaller off-highway vehicles that may not be licensed for highway use (but not to oversize or overweight vehicles under State traffic law).

Dispersed Camping/Game Retrieval:

Dispersed Camping/Game Retrieval, Both Sides

This symbol is used along with a designated road or trail to indicate limited cross-country motor vehicle use within a specific distance of that route, solely for the purpose of dispersed camping and/or game retrieval. The dots indicate where this activity is permitted. They may be on the left, right, or both sides of the route. Refer to the Dispersed Camping/ Game Retrieval Table for specifics.

Other Public Roads and Trails:

Interstate

Highways, U.S., State, County

Other Public Roads

These symbols are used to show routes the Forest Service does not have jurisdiction over and has not designated for motorized use. These symbols are part of the reference layers showing connections to towns and cities outside the forest boundary.

Short Route Identifier:

70333

This symbol is used for roads that are too short to show a symbol type on the map. The symbol contains the number of the road or trail. Users should refer to the corresponding number in the Short Route Table for designation information.

OPERATOR RESPONSIBILITIES

Operating a motor vehicle on National Forest System roads, National Forest System trails, and in areas on National Forest System lands carries a greater responsibility than operating that vehicle in a city or other developed setting. Not only must you know and follow all applicable traffic laws, you need to show concern for the environment as well as other forest users. The misuse of motor vehicles can lead to the temporary or permanent closure of any designated road, trail, or area. As a motor vehicle operator, you are also subject to State traffic law, including State requirements for licensing, registration, and operation of the vehicle in question.

Motor vehicle use, especially off-highway vehicle use, involves inherent risks that may cause property damage, serious injury, and possibly death to participants. Drive cautiously and anticipate rough surfaces and features, such as snow, mud, vegetation, and water crossings common to remote driving conditions. By your participation, you voluntarily assume full responsibility for these damages, risks, and dangers. Take care at all times to protect yourself and those under your responsibility.

Much of the Magdalena Ranger District is remote. Medical assistance may not be readily available. Cellular telephones do not work in many areas of the Magdalena Ranger District. Take adequate food, water, first-aid supplies, and other equipment appropriate for the conditions and expected weather.

ALWAYS REMEMBER TO RESPECT PRIVATE LAND! PROTECT YOUR PRIVILEGE. STAY ON DESIGNATED ROADS AND TRAILS AND IN DESIGNATED AREAS.

Read and understand this map in its entirety. If you have questions, please contact the Magdalena Ranger District of the Cibola National Forest for clarification.

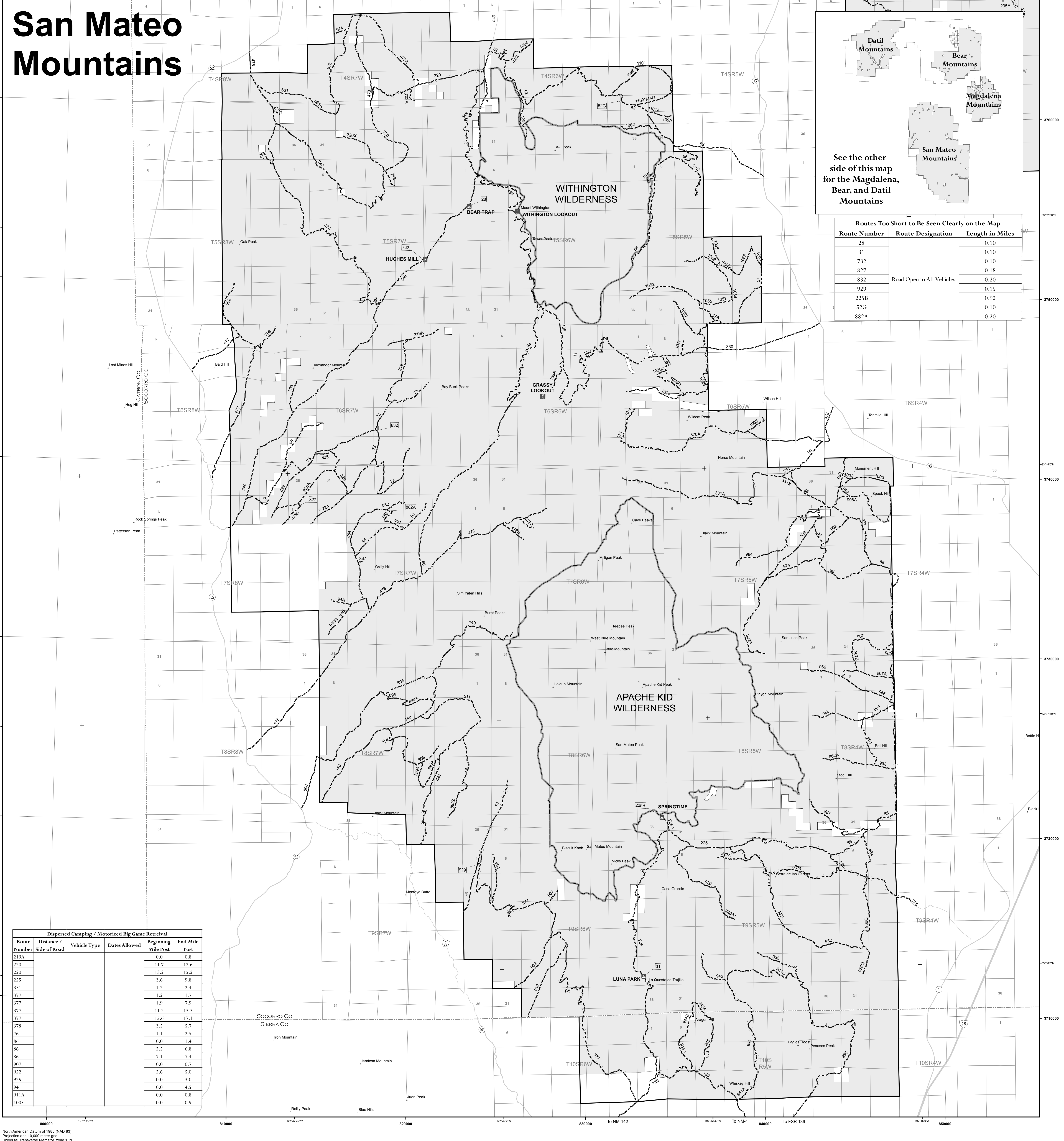
As a motor vehicle operator on a National Forest System road, trail, or area you must comply with this map, as well as all Federal, State, and local laws and regulations. Compliance with these rules is your responsibility.



Motor vehicle use off of forest roads and trails for the purpose of dispersed camping and big game retrieval is permitted on National Forest System lands for up to 300 feet from each side of the road where designated on the Magdalena Ranger District.

There are no routes with a seasonal designation on the Magdalena Ranger District.

There are no areas open to cross country motorized uses on the Magdalena Ranger District.



Dispersed Camping / Motorized Big Game Retrieval					
Route Number	Distance / Side of Road	Vehicle Type	Dates Allowed	Beginning Mile Post	End Mile Post
219A				0.0	0.8
220				11.7	12.6
220				13.2	15.2
225				3.6	9.8
331				1.2	2.4
377				1.2	1.7
377				1.9	7.9
377				11.2	13.3
377				15.6	17.1
378				3.5	5.7
76				1.1	2.5
86				0.0	1.4
86				2.5	6.8
86				7.1	7.4
907				0.0	0.7
922				2.6	5.0
925				0.0	3.0
941				0.0	4.5
941A				0.0	0.8
1005				0.0	0.9

See the other side of this map for the Magdalena, Bear, and Datil Mountains

Routes Too Short to Be Seen Clearly on the Map		
Route Number	Route Designation	Length in Miles
28	Road Open to All Vehicles	0.10
31		0.10
732		0.10
827		0.18
832		0.20
929		0.15
225B		0.92
52G		0.10
882A		0.20