



Campground Guide

Southwestern Colorado Public Lands



This guide provides information on National Forest and Bureau of Land Management campgrounds and day-use areas in southwestern Colorado. The map, table, and descriptions inside will help you learn more about these facilities and the amenities they offer.

Facilities

Most of the campgrounds and picnic areas in this guide have tables, fire grates, and centrally located toilets. Some offer a more primitive experience, while others have modern conveniences.

Campground roads and parking areas are usually gravel; a few are paved. Most, but not all, offer drinking water. At some, you must remove your own trash; others offer trash service. A few provide electrical hookups for recreational vehicles. Many offer universally accessible (barrier-free) picnic tables, fire grates, and restrooms.

Fee campgrounds have campground hosts on site or self-serve registration and fee-payment stations at entrances, where regulations and information are posted. Prices range from \$18 – \$82 for individual sites (double sites and sites with electricity cost more), and \$75 – \$280 for group sites. USFS fee campgrounds are run by private concessionaires under permit.

Camping

Campgrounds open when sites are snow free and National Forest Roads are open, with full operation from about Memorial Day to after Labor Day. Some stay open longer, with reduced services and fees. The most popular campgrounds tend to be near larger lakes, major highways and communities; these are often full on summer weekends and holidays. Campgrounds are intended to be temporary sites for vacationers, with a time limit on stays. Most permit 14 days. A few National Forest sites allow up to 28 days.

Individual campsites can accommodate up to eight people and two vehicles. Some campgrounds allow you to pay extra for an additional vehicle. Group campsites vary in how many people they can accommodate, as do group picnic sites. Check with campground hosts as some campgrounds offer campfire programs in summer.

Contact the San Juan National Forest Headquarters at 970-247-4874 or fs.usda.gov/r02/sanjuan for more information.

Advance Reservations

Advance reservations for many of the facilities described in this guide are available through the National Recreation Reservation System. Information on which campsites and picnic sites may be reserved can be found inside, but please check the **Rules & Cancellations** section for more specific information.

Reservations can be made up to 6 months in advance for individual sites, and up to 12 months in advance for group sites. You may pay by credit card over the phone or on-line. In addition to a camping fee, a non-refundable reservation fee is charged. Changes, no-shows and cancellations are subject to service fees.

TO BOOK RESERVATIONS:
Call toll-free 877-444-6777;
TDD 877-833-6777,
or go to www.recreation.gov



Dispersed Camping

Camping outside of campgrounds is usually allowed, but you'll find some areas posted as closed. In popular areas, dispersed sites may have toilets or fire grates. To avoid damaging vegetation, camp in already used areas. Never level a site or dig trenches; instead pick a level site with good drainage.

- Refer to the appropriate Motorized Vehicle Use Map (MVUM) for more specific dispersed camping requirements, including where it is allowed and what motor vehicle use is legal to access the camp area. MVUMs are available FREE from most San Juan National Forest offices.
- Keep vehicles within 300 feet of any Forest system roads, but only do so without causing resource damage.
- Locate your site at least 100' from water.
- Camping is limited to 14 days in any one spot at campgrounds and in dispersed areas.
- Pack out ALL trash.

Recycling

We are working on getting recycling at all our campgrounds. Until then, please pack out & recycle in local communities.



Concessionaire partner with the San Juan National Forest

Advenco is a family-owned company with almost 30 years of experience providing management services to campgrounds, marinas, day use areas, national, state, and local park concessions along with other federal agencies. Over the years we have worked to enhance, elevate, and complement the visitor's experience at each park, campground, landmark, and property we operate.

Our mission at Advenco is to safeguard our natural, historic, and cultural resources while making every moment matter for our associates and our guests.

Our employees are empowered to act and create lasting memories. With a primary focus on hospitality and quality, each Advenco associate is trained and motivated to create welcoming and treasured experiences for every guest in an effort to create lasting relationships. From our headquarters in Overland Park, Kansas, our goal is to provide a clean, safe, and enjoyable place for you to enjoy the outdoors.

Call, email or visit us at:
913-361-0171
info@goexplorus.com
<https://www.goexplorus.com/>

Special thanks to Advenco for funding the printing of this guide!

This Publication is created for you by the San Juan Mountains Association.

The San Juan Mountains Association is a nonprofit partner of the USFS, our mission is to provide education, interpretation, and information, while promoting the conservation of cultural and natural resources. Programs and volunteer opportunities include:

EXPLORE

- Visitor Information
- Purchase Books &
- Maps Trip Planning

LEARN

- Workshop and Field Seminars
- Guided Nature Walks
- Youth Camps

PROTECT

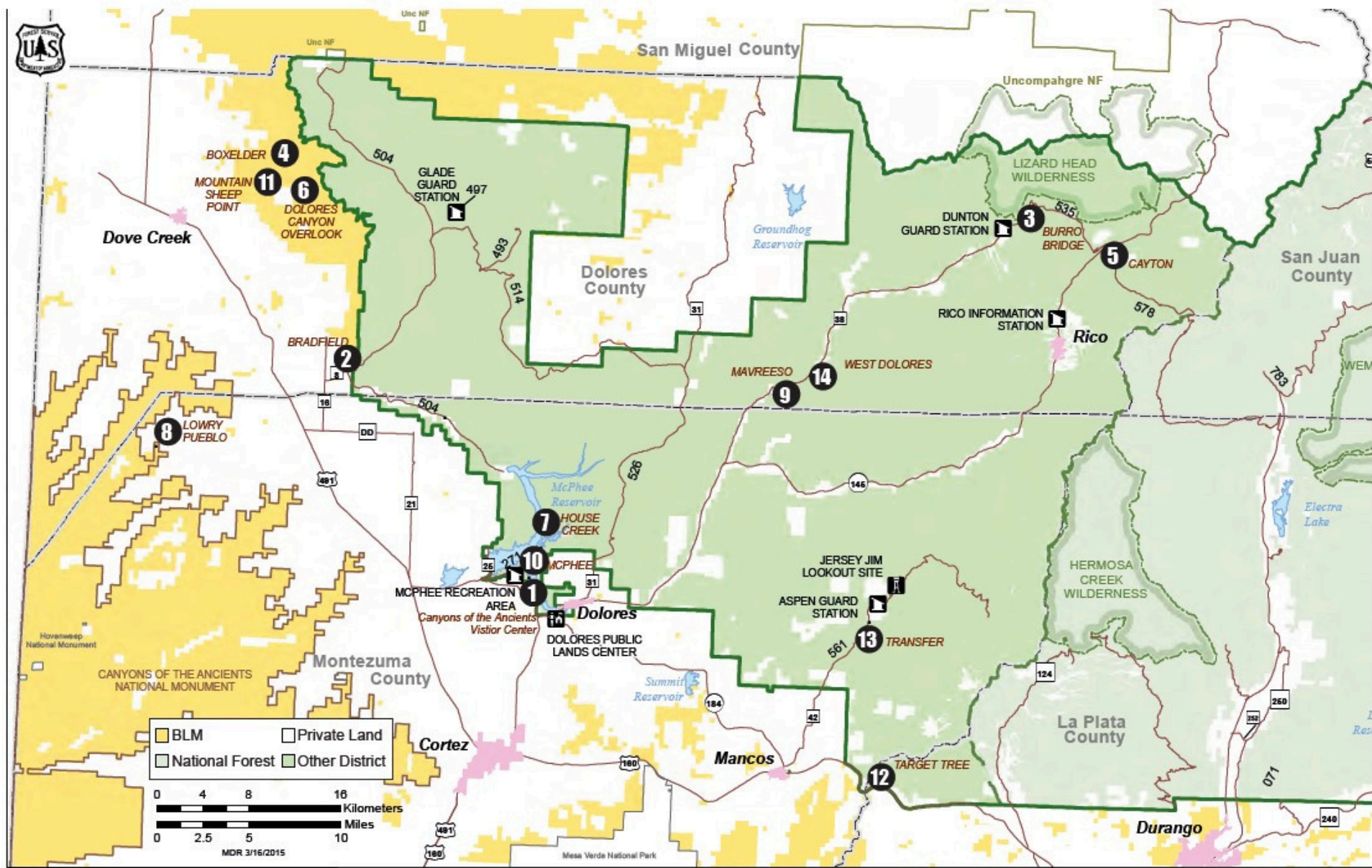
- Volunteer Opportunities
- Conservation and Stewardship Programs



The San Juan Mountains Association is a nonprofit 501 (c)3 equal opportunity service provider. For more information on membership or to purchase area maps and books, please call 970-247-4874 or **visit our website at: www.sjma.org**

Public Lands Campgrounds + Day Use Areas

Questions? Call the Dolores Ranger District: Forest Service: 970-882-7296



Key Map	Name	Location	Elev.	Camp Sites	Group Sites	Picnic Sites	Reserve Sites	RV Size	Services
1	Canyons of the Ancients Vistor Center	10 mi. N of Cortez	7000'			5			\$ ♿ ♻️ TH 🚰 🗑️ 🚶 🚽
2	Bradfield- BLM	37 mi. N or Cortez	6500'	22		3 group		45'	\$ ⬆️ ♿ ♻️ 🚰 🗑️ 🛖 🚶 🚽
3	Burro Bridge	37 mi. NE of Dolores	9100'	14				35'	\$ ⬆️ ♿ ♻️ 🚰 🗑️ TH 🛖 🐎 🚶 🚽
4	Box Elder-BLM	6 mi. E of Dove Creek	6000'	11				Not Advisable	⬆️ ♿ 🚰 🛖 🚶 🚽
5	Cayton	6 mi. N of Rico	9400'	27			16	50'	\$ ⬆️ ♿ ♻️ ♻️ 🚰 🗑️ 🛖 🚰 🚶 🚽
6	Dolores Overlook-BLM	7 mi. East of Dove Creek	8000'	3		5		0'	⬆️ ♿ 🚶 🚽
7	House Creek	12 mi. NW of Dolores	7000'	22	1	2	12	50'	\$ ⬆️ ♿ ⬆️ ♻️ ♻️ 🚰 🗑️ 🛖 🚰 🗑️ 🚶 🚽
8	Lowery Pueblo Picnic Area- BLM	9 mi. W of Pleasant View	6700'			7			♻️ ♿ TH 🚰 🚽
9	Mavreeso	20 mi. NE of Dolores	7700'	19		1 group	12	35'	\$ ⬆️ ♿ ♻️ ♻️ 🚰 🚰 🚰 ⬆️ 🗑️ 🚶 🚽
10	McPhee	8 mi. W of Dolores	7400'	76	3	2 group	50	50'	\$ ⬆️ ♿ ♻️ ♻️ 🚰 🗑️ 🚰 🚰 ⬆️ 🗑️ 🚶 🚽
11	Mtn. Sheep Point-BLM	5 mi. N of Dove Creek	6500'			2			♿ ♻️ 🛖 🚶 🚽
12	Target Tree	7 mi. E of Mancos	7800'	28			19	45'	\$ ⬆️ ♿ ♻️ ♻️ TH 🐎 🛖 🚶 🚽
13	Transfer	11 mi. NE of Mancos	8900'	16	1	1 group	7	45'	\$ ⬆️ ♿ ♻️ ♻️ TH 🛖 🚶 🚽
14	West Dolores	21 mi. NE of Dolores	7700'	18		2	10	35'	\$ ⬆️ ♿ ♻️ ♻️ 🚰 🗑️ 🚰 🚶 🚽

Please note that Jersey Jim Lookout Tower, Aspen Guard Station, and Glade Guard Station may be rented. For information, go to <https://jerseyjimfoundation.org/>

Campground Rules

OBEY “QUIET TIME”

Please be a good neighbor in campgrounds. Don't make loud noises, especially at night. Posted quiet hours are typically from 10 p.m. – 6 a.m. At other hours during the day, limit the use of generators to no more than one hour at a time. Drive slowly through campground loops and watch closely for pedestrians.

OFF HIGHWAY VEHICLES

Motorcycles, ATVs, UTVs, etc. cannot be used inside campgrounds, except to travel between your campsite and locations outside the campground; however, their use may not be allowed on county roads.

HORSES AND PACK STOCK

Most campgrounds do not allow horses or pack stock. Those camping with horses should seek out campgrounds with facilities listed in this guide that specifically accommodate pack stock.

DOGS ON LEASH

Dogs must be leashed or otherwise physically restrained in campgrounds. Do not allow pets to harass other visitors, dogs, or wildlife. Do not leave pets unattended. Control barking. Must be under voice command. Be sure to clean up and dispose of your pet's waste properly.

CAMPFIRES

Campfires are only allowed in fire grates at campsites, and firewood must fit inside the metal ring. When no one is physically attending a campfire, it must be put out completely. Pour water on the fire and stir ashes until they are cool with no smoke. Be aware of any fire restrictions in effect. These should be posted at the campground entrance. Never leave your fire unattended.

TRASH

Use trash receptacles in campgrounds. Some primitive campgrounds require you to pack out your own trash. Do not burn trash - many materials will not burn to ash. Leave a clean campsite when you depart. Follow bear-safety regulations under “Store Food Properly.”

PROTECT VEGETATION

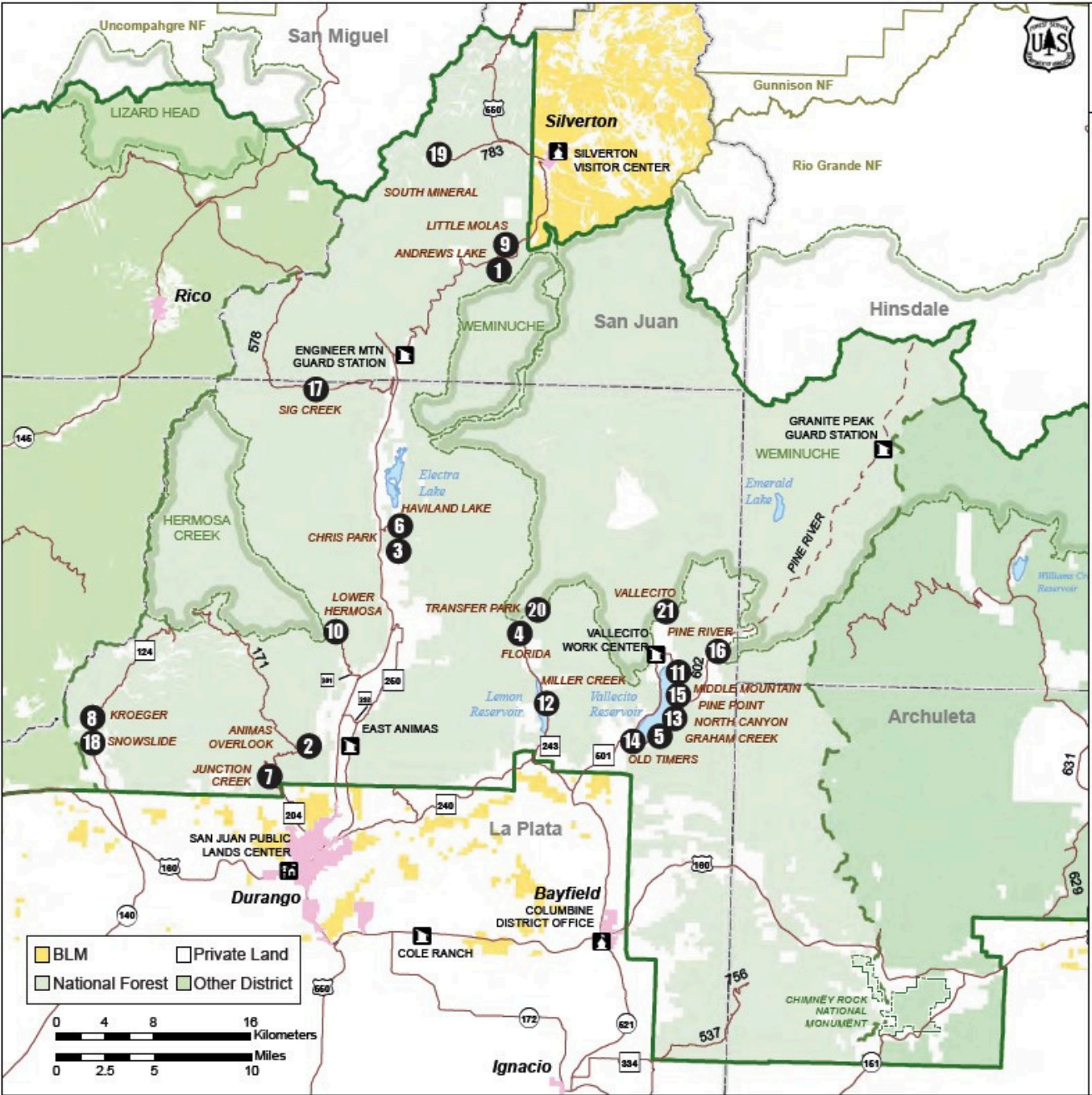
Do not break limbs, drive nails or carve into bark of trees or shrubs. This allows insects and disease to enter and can weaken or kill trees. Walk on paths and roads to keep grass and plants alive. Leave wildflowers for others to enjoy. Bring firewood with you or check with campground hosts. Collect only dead wood lying on the ground.

SHOOTING FIREARMS in campgrounds is prohibited.

Columbine

Public Lands Campgrounds + Day Use Areas

Questions? Call the Columbine Ranger District: 970-884-1401 or 970-247-4874



Be Careful with Fire

- Southwestern Colorado may look lush and green, but this is arid country that can be dangerously dry in summer or fall. Be careful with fire – a spark, a puff of wind and nearby flammable materials can combine to cause disaster before you know it.
- If there are current fire restrictions, as a public notice, they will be posted at campground entrances, Forest entrance signs and trailheads. Check with campground hosts or with district offices.
 - In campgrounds, campfires are allowed only within a fire grate, and firewood must fit inside the metal ring.
 - If camping in the backcountry, don't build new fire rings/fire pits - use a camp stove or an existing fire ring/ fire pit. Fire rings/fire pits scar the scenery and sterilize the soil beneath. Don't build a fire beneath overhanging branches.
 - Regulations require fires be put out completely every time you leave camp or go to bed. Pour water over ashes and stir until cold. Stir wet ashes until there is no smoke or heat.
 - Do not burn trash. Some items are harmful to the environment. Plastics and tin will not burn to ash, and the resulting debris is messy and difficult to clean up.
 - Do not park hot vehicles over dry grass.
 - Never toss cigarette butts - extinguish and dispose of safely.

Key Map	Name	Location	Elev.	Camp Sites	Group Sites	Picnic Sites	Reserve Sites	RV Size	Services
1	Andrews Lake	37 mi. N of Durango	10,800'			4			
2	Animas Overlook	11 mi. N of Durango	9000'			4			
3	Chris Park	18 mi. N of Durango	7900'		3		3	50'	
4	Florida	22 mi. NE of Durango	8300'	20	1		1	25'	
5	Graham Creek	18 mi. N of Bayfield	7700'	25			15	35'	
6	Haviland Lake	18 mi. N of Durango	8100'	43		5	26	45'	
7	Junction Creek	5 mi. NW of Durango	7300'	46	2 (1 day use + 1 overnight)	1 group + indiv.	29	60'	
8	Kroeger	18 mi. NW of Durango	8900'	10				25'	
9	Little Molas	4 mi. SW of Silverton	10,900'	10				35'	
10	Lower Hermosa	14 mi. NW of Durango	7700'	19				30'	
11	Middle Mountain	23 mi. N of Bayfield	7700'	24				35'	
12	Miller Creek	18 mi. NE of Durango	8200'	12		4		45'	
13	North Canyon	19 mi. NW of Bayfield	7700'	21			12	40'	
14	Old Timers	16 mi. N of Bayfield	7700'			10			
15	Pine Point	20 mi. N of Bayfield	7700'	28			15	40'	
16	Pine River	27 mi. N of Bayfield	8100'	6				16'	
17	Sig Creek	32 mi. N of Durango	9200'	9				25'	
18	Snowslide	18 mi. NW of Durango	8800'	13				35'	
19	South Mineral	7 mi. W of Silverton	9800'	26				35'	
20	Transfer Park	23 mi. NE of Durango	8500'	25				35'	
21	Vallecito	22 mi. N of Bayfield	7900'	80		7	36	45'	

Symbols Used in this Guide:

Campground

Picnic Area

Group Camping

Barrier-Free

Fees Charged

Drinking Water

Fishing

Boat Launch

Electricity

Rafting

Trailhead

Horse Staging Area

Horse Corral

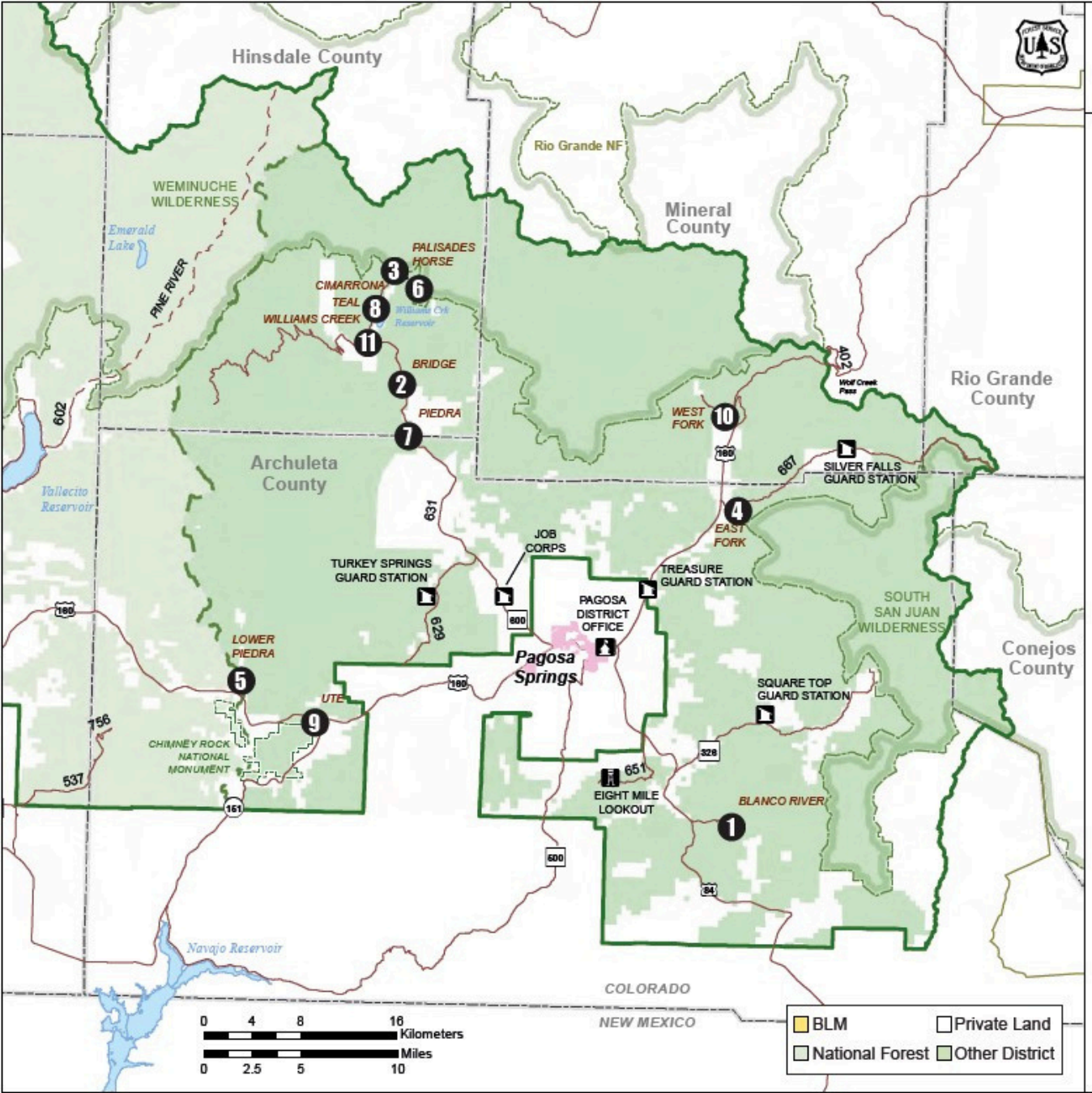
RV Dump Station

Restrooms

Pagosa

Public Lands Campgrounds + Day Use Areas

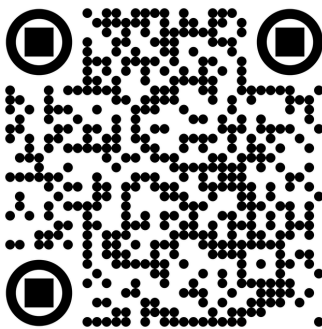
Questions? Call the Pagosa District: 970-264-2268



Additional Info:



For more general information about the San Juan National Forest



For current Fire Restrictions and Fire Safety Information

Key Map	Name	Location	Elev.	Camp Sites	Group Sites	Picnic Sites	Reserve Sites	RV Size	Services
1	Blanco River Group	15 mi. SE of Pagosa	7300'		1		1	35'	\$ ^ ♀ ♂ ♀ ♂
2	Bridge	19 mi. NW of Pagosa	7800'	19				35'	\$ ^ ♀ ♂ ♀ ♂
3	Cimarrona	27 mi. NW of Pagosa	8400'	21				35'	\$ ^ ♀ ♂ ♀ ♂ TH ♀ ♂
4	East Fork	11 mi. NE of Pagosa	7700'	26			17	35'	\$ ^ ♀ ♂ ♀ ♂ TH ♀ ♂
5	Lower Piedra	18 mi. E of Bayfield	6600'	17				35'	\$ ^ ♀ ♂ ♀ ♂
6	Palisades	28 mi. NW of Pagosa	8400'	12			12	45'	\$ ^ ♀ ♂ ♀ ♂ TH ♀ ♂ ♀ ♂
7	Piedra Picnic Area	16 mi. NW of Pagosa	7600'			4			^ ♀ ♂ TH ♀ ♂
8	Teal	25 mi. NW of Pagosa	8300'	16				35'	\$ ^ ♀ ♂ ♀ ♂
9	Ute	17 mi. W of Pagosa	6800'	26	1		22	35'	\$ ^ ♀ ♂ ♀ ♂
10	West Fork	15 mi. NE of Pagosa	7900'	28			18	35'	\$ ^ ♀ ♂ ♀ ♂ TH ♀ ♂
11	Williams Creek	23 mi. NW of Pagosa	8200'	61			35	45'	\$ ^ ♀ ♂ ♀ ♂

Avoid Conflict with Wildlife

Wild animals are residents of this diverse terrain. Campground visitors are likely to see squirrels, chipmunks, marmots, deer, elk, skunks, porcupines, racoons, and many of the some 300 species of birds. Backcountry visitors may catch a glimpse of bighorn sheep, mountain goats, black bear, beaver, river otters, or even mountain lions. View wildlife from a safe distance and treat wild animals with respect – for your safety as well as theirs.

UNWANTED VISITORS Don't attract unwanted visitors to your campsite. Critters have an acute sense of smell and are easily lured by the aroma of food or trash. Some rodents have a taste for leather and anything sweaty or salty; store these items carefully. Never feed wildlife or encourage them to become unafraid of humans - this endangers you and them.

RATTLESNAKES Rattlesnakes are seldom seen at high elevations but may be found in lower areas. Snakebites are serious, but less than 2% are fatal. Don't put your hands and feet in places without looking first. Snakes fill an important niche in the animal community, including eating rodents. If you see a snake, please treat it as any other forest animal – as a subject to observe but not to disturb or injure.

DOGS AND WILDLIFE DON'T MIX!

Dogs must be on a leash in campgrounds and must be leashed or under voice control at all times in the backcountry. One of the most negative effects you can have on wildlife is to allow your dog to roam free. Dogs stress and endanger wild animals by chasing them. Even if the animal appears to have escaped unharmed, it may not survive as a result. In addition, many wild creatures pose dangers to dogs. Your pet can be attacked by predators, or suffer when a skunk or porcupine must defend itself against curiosity or attack.

STORE FOOD PROPERLY

Black bears can cause a lot of damage to your belongings, and if a bear is desensitized to humans by your behavior, it may have to be destroyed. Bear-safety regulations are in effect for campgrounds. Food, containers, packaging, cooking utensils, garbage, pet food, and bird feeders must be stored in a bear-resistant manner (i.e. inside a hard-sided vehicle or camper; hung at least 10 feet above ground and 4 feet away from a tree or other support; inside an approved bear resistant container; or within an electrified enclosure.