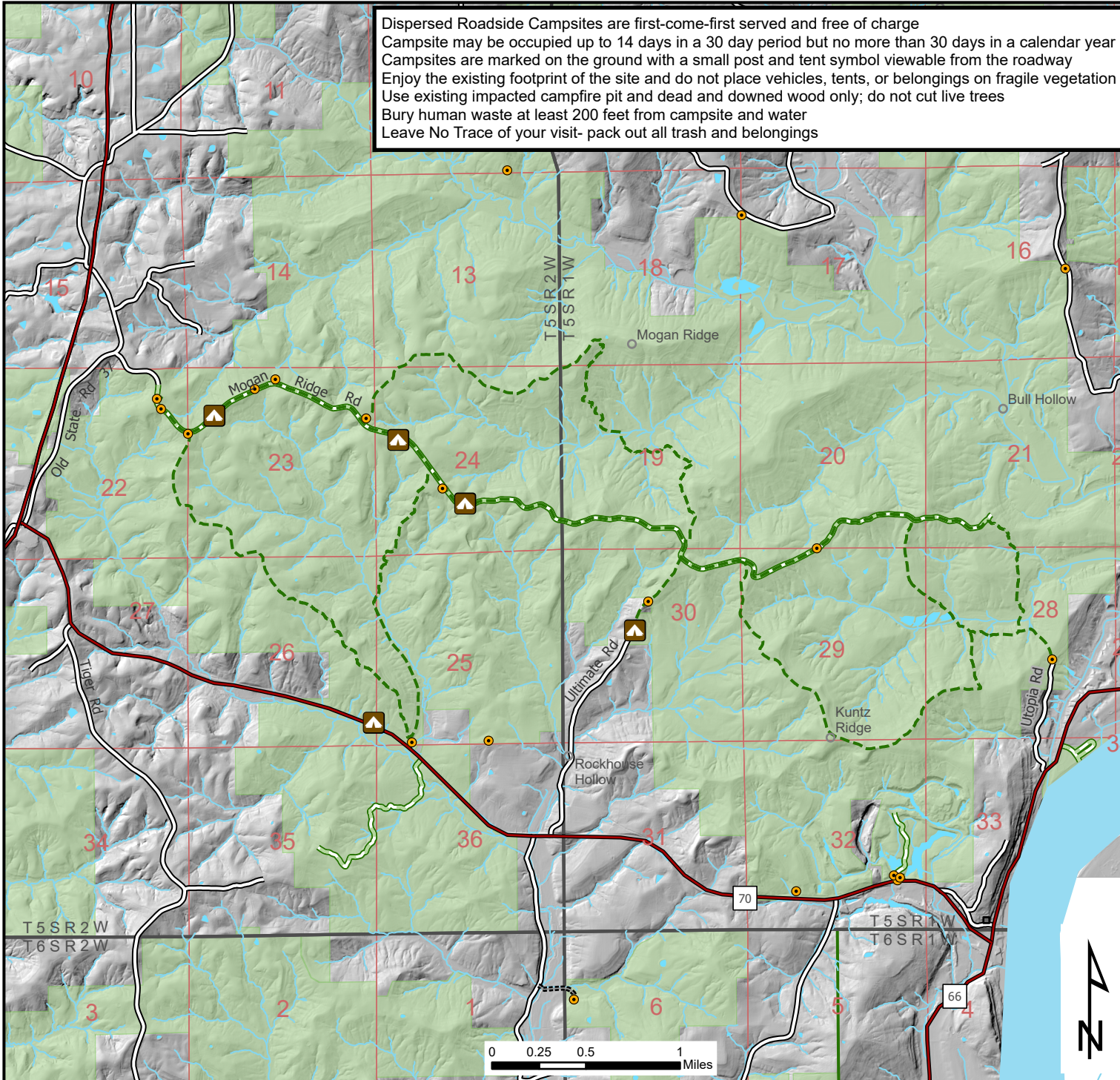


Dispersed Roadside Campsites are first-come-first served and free of charge
 Campsite may be occupied up to 14 days in a 30 day period but no more than 30 days in a calendar year
 Campsites are marked on the ground with a small post and tent symbol viewable from the roadway
 Enjoy the existing footprint of the site and do not place vehicles, tents, or belongings on fragile vegetation
 Use existing impacted campfire pit and dead and downed wood only; do not cut live trees
 Bury human waste at least 200 feet from campsite and water
 Leave No Trace of your visit- pack out all trash and belongings



Hoosier National Forest

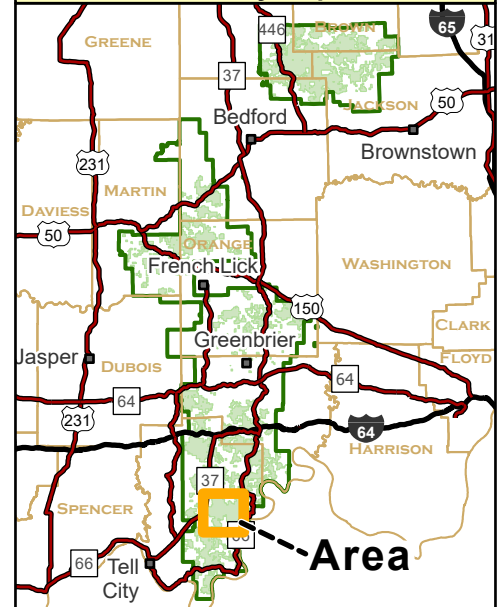
Tell City Ranger District

Designated Roadside Campsites Map (Tell City Unit)

Legend

- Dispersed Campsite
- Gate
- Interstate
- Highway
- Trail
- Stream
- Waterbody
- National Forest Land
- Non-National Forest Land
- Forest Boundary

Vicinity Map



Date: 9/5/2024

Use Limitations
 The Forest Service uses the most current and complete data available. GIS data and product accuracy may vary. They may be developed from sources of differing accuracy; accurate only at certain scales; based on modeling or interpretation; incomplete while being created or revised; etc. Using GIS products for purposes other than those for which they were created, may yield inaccurate or misleading results. The Forest Service reserves the right to correct, update, modify or replace GIS products without notification. USDA is an equal opportunity provider and employer.

