

Ross-Adams Site Characterization Report and EE/CA - Update

Hydaburg Meeting
December 14, 2010

Presentation Overview

- ❑ Why we are here
- ❑ USFS and Newmont/Dawn Settlement Agreement and Consent Order
- ❑ EE/CA process overview
- ❑ Why we need POW Island opinions and input
- ❑ Open house process
- ❑ Site Introduction

Why We Are Here

- ❑ Newmont/Dawn voluntarily entered into Administrative Settlement and Order on Consent
- ❑ POW Island residents are stakeholders in the Ross-Adams removal action process
- ❑ Last update was Sept. 2009
- ❑ New information to share:
 - Results of Site Characterization
 - Schedule for completion of draft EE/CA
- ❑ Provide details on future activities

The Agreement

- ❑ April 2009, Newmont/Dawn entered into an Administrative Order on Consent with the USDA Forest Service for Ross-Adams
 - To complete:
 - Planning documents
 - Site Investigation
 - Site Characterization Report
 - Engineering Evaluation / Cost Analysis (EE/CA)
 - Human Health and Ecological Risk Assessment
 - Objectives are:
 - Work with the USFS to develop an appropriate remedy with stakeholder input
 - Complete the EE/CA and Risk Assessment process in a timely manner
- ❑ Agreement does not include clean up

The Tasks Completed So Far

- ❑ Planning documents (SAP, QAPP & SSHP) completed and approved June 5, 2009
- ❑ Field Investigation – Completed 3 Phases in 2009
 - #1 June 8 - 12
 - #2 July 18 - August 2
 - #3 September 20 - 26
- ❑ Site Characterization Report
 - Draft Report submitted for agency review March 18, 2010
 - Final Report approved by USFS December 2010

EE/CA Process

- ❑ EE/CA = Engineering Evaluation and Cost Analysis
- ❑ EE/CA is a process under CERCLA (Superfund) to develop and evaluate potential removal actions
- ❑ The Ross-Adams EE/CA will develop and evaluate removal actions designed to reduce human health and environmental radiologic and chemical hazards
- ❑ Steps completed so far by USFS and Newmont / Dawn provide the information needed to design and evaluate removal alternatives
- ❑ EE/CA process will consist of a Draft EE/CA for public review and another community meeting

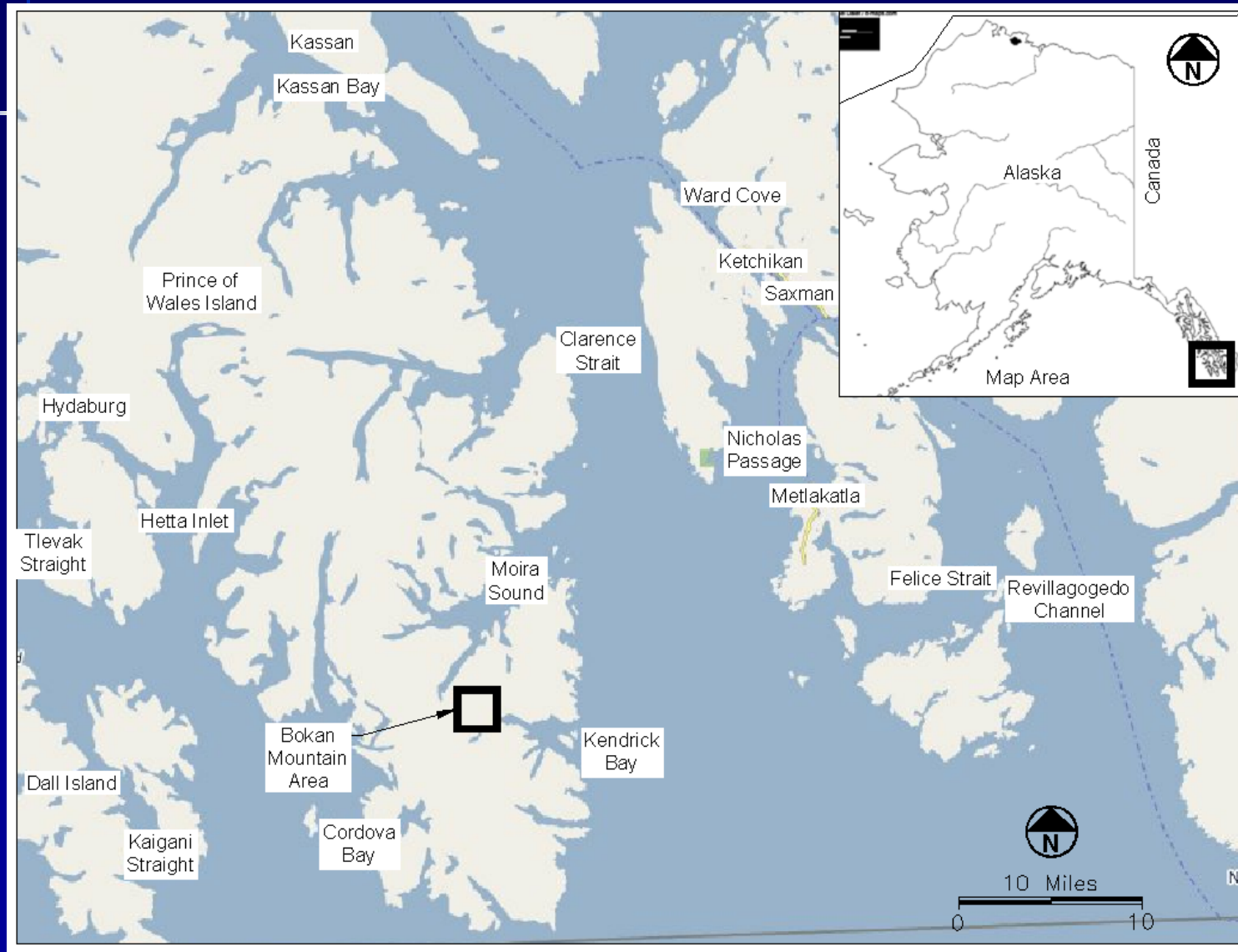
Why we need Community opinions and input

- ❑ Evaluation of removal actions (clean up) for the site will consider community land use and food gathering practices
- ❑ Future risk assessment modeling will develop specific exposure scenarios to represent community land use and food consumption

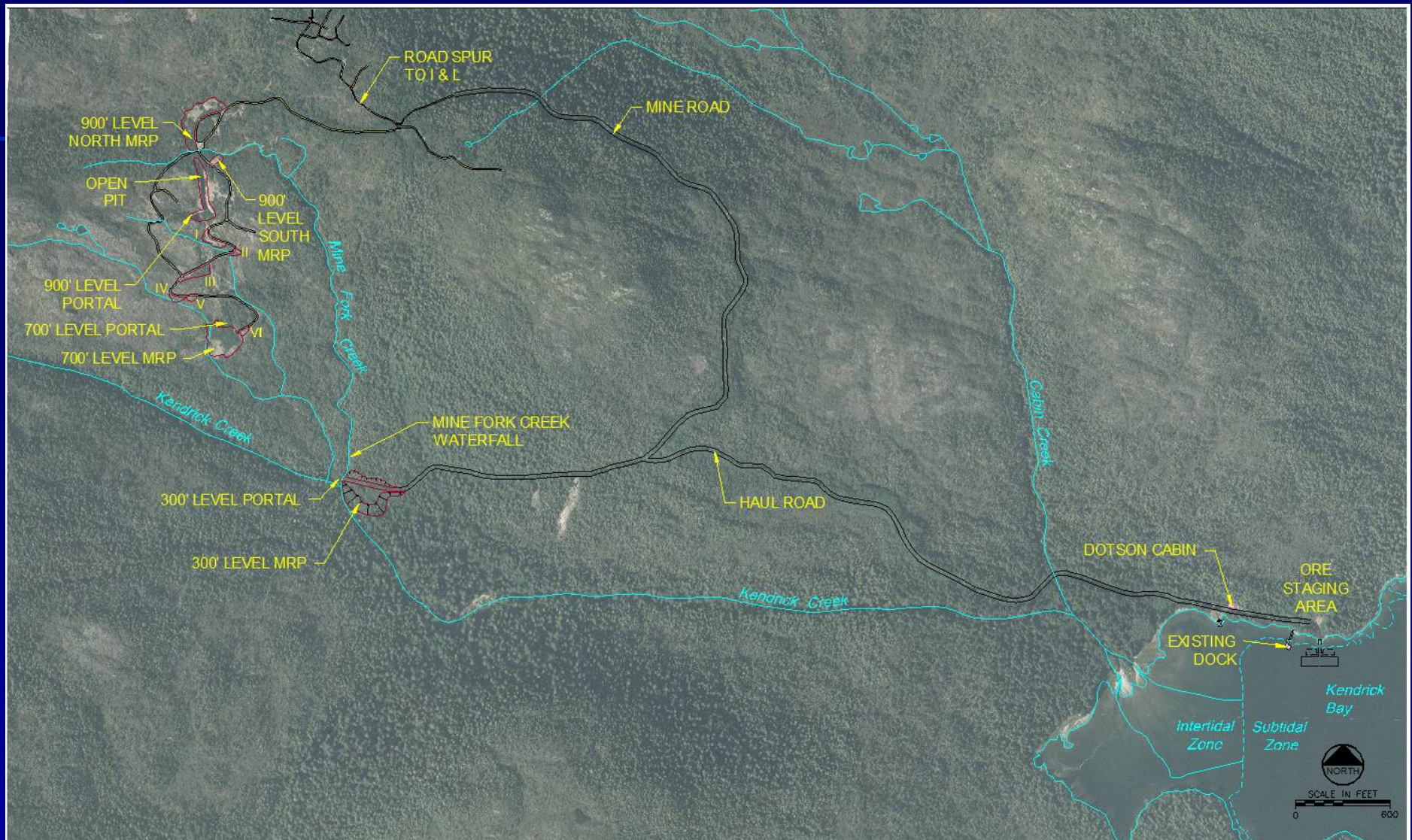
Open house process

- ❑ Information on the Site Characterization and future steps for the process are presented on the posters positioned throughout the room
- ❑ Project experts from the USFS, Newmont / Dawn and consulting team are here to talk you through the information and answer questions
- ❑ Comment cards and comment recorders are available to document your opinions and comments
- ❑ Take your time and ask as many questions as you would like

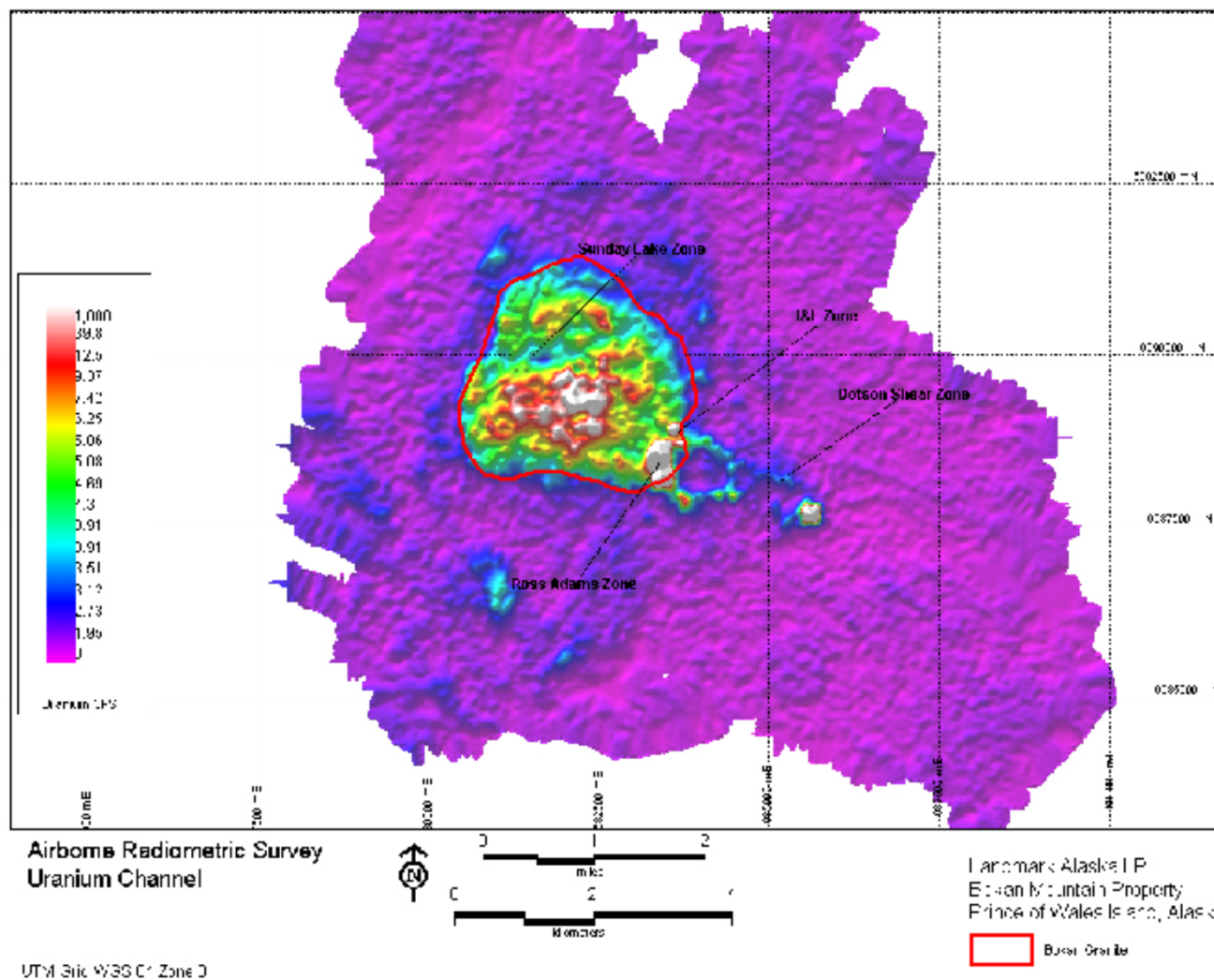
Ross-Adams Site Location



Ross-Adams Site



Bokan Mountain Radiometrics



Ross-Adams Site





