

Snake River Fees

Required May 1- November 1

Day Use:

A day use fee of \$5 per vehicle is required in the Snake River Recreation Area. Until electronic kiosks are installed, users must pay via Scan & Pay through the Recreation.gov app. **It's essential to download the app before your arrival due to limited cell service in the canyon**, as payments can be made offline once installed. A QR code is provided for downloading the app if needed.

QR CODE FOR DAY
USE/REC.GOV APP



Season Passes

Season passes cost \$40 for 1 pass or \$60 for 2 passes and can be purchased on Recreation.gov. After purchasing, bring proof of purchase (a PDF on your phone is acceptable) to the Jackson Ranger District front desk at 340 N. Cache, Jackson, WY 83001 or the West Table kiosk for a durable hangtag. If the kiosk is unattended or the office is closed on weekends, displaying a printed receipt on your dashboard is valid for up to 3 days post-purchase.

QR CODE FOR SEASON
PASSES



Large Groups (16 people or more):

Since 1998, groups consisting of 16 to 30 individuals have been required to acquire a non-commercial group use permit. Now, these groups can secure both the permit and a launch time through Recreation.gov: <https://www.recreation.gov/timed-entry/10112505>.

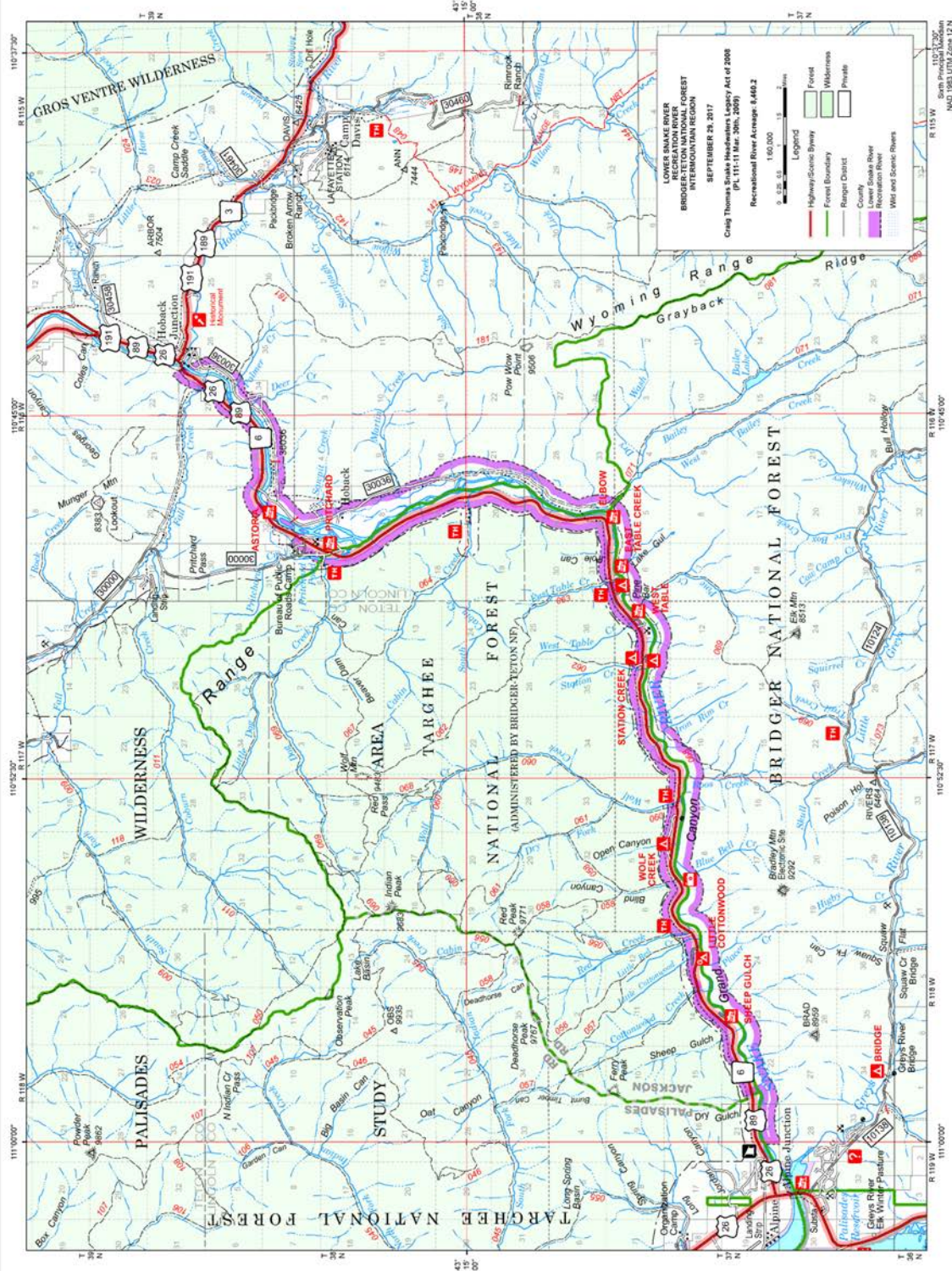
QR CODE FOR LARGE
GROUPS



Please note that day use fees will be charged at the time of obtaining your permit and launch time, so there is no need to pay day use vehicle fees upon arrival. Day use fees are charged via Recreation.gov when you obtain your permit and launch time, **so do not pay vehicle fees when you arrive.**

When did we get fees and why?

In September 2024, fees for recreation in the Snake River Canyon were approved. There were two rounds of public comment for the fee proposal in 2023 and 2024. Collected fees will improve visitor safety and experience, support necessary services, and fund facility and ramp changes.



LOWER SNAKE RIVER RECREATION RIVER
BRIDGER NATIONAL FOREST
TARGHEE NATIONAL FOREST

SEPTEMBER 29, 2017
 Craig Thomas Snake Headwaters Legacy Act of 2008
 (PL 111-11 Mar. 20th, 2009)
 Recreational River Average 4,469.2

Legend:
 Forest (Green)
 Wilderness (Light Green)
 Private (White)
 Highway/Scenic Bypass (Red)
 Forest Boundary (Green line)
 Range District (Black line)
 County Snake River (Purple)
 Recreation River (Blue line)
 Well and Scenic Rivers (Blue line)

Scale: 0 0.5 1 1.5 2 Miles
 0 0.5 1 1.5 2 Kilometers

111°00'00" W
 111°15'00" W
 111°30'00" W
 111°45'00" W
 111°55'00" W
 111°59'00" W
 111°00'00" W
 111°15'00" W
 111°30'00" W
 111°45'00" W
 111°55'00" W
 111°59'00" W

T 37 N
 T 38 N
 T 39 N
 T 40 N

TARGHEE NATIONAL FOREST

NATIONAL FOREST
(ADMINISTERED BY BRIDGER-TETON NF)

BRIDGER NATIONAL FOREST

WILDERNESS

GROS VENTRE WILDERNESS

PALISADES

JACKSON PALISADES

Range

Wyoming Grayback Ridge

TARGHEE AREA

LOTTE CANYON

GRAND CANYON

WOLF CREEK

STATION CREEK

TABLE CREEK

ASTOR

HOBACK

POWELL

POWELL

POWELL

POWELL

POWELL

POWELL

POWELL

POWELL

POWELL

POWELL

POWELL

POWELL

POWELL

POWELL

POWELL

POWELL

POWELL

POWELL

POWELL

POWELL

POWELL

POWELL

POWELL

POWELL

POWELL

POWELL

POWELL

POWELL

POWELL

POWELL

POWELL

POWELL

POWELL

POWELL

POWELL

POWELL

POWELL

POWELL

POWELL

POWELL

POWELL

POWELL

POWELL

POWELL

POWELL

POWELL

POWELL

POWELL

POWELL

POWELL

POWELL

POWELL

POWELL

POWELL

POWELL

POWELL

POWELL

POWELL

POWELL

POWELL

POWELL

POWELL

POWELL

POWELL

POWELL

POWELL

POWELL

POWELL

POWELL

POWELL

POWELL

POWELL

POWELL

POWELL

POWELL

POWELL

POWELL

POWELL

POWELL

POWELL

POWELL

POWELL

POWELL

POWELL

POWELL

POWELL

POWELL

POWELL

POWELL

POWELL

POWELL

POWELL

POWELL

POWELL

POWELL

POWELL

POWELL

POWELL

POWELL

POWELL

POWELL

POWELL

POWELL

POWELL

POWELL

POWELL

POWELL

POWELL

POWELL

POWELL

POWELL

POWELL

POWELL

POWELL

POWELL

POWELL

POWELL

POWELL

POWELL

POWELL

POWELL

POWELL

POWELL

POWELL

POWELL

POWELL

POWELL

POWELL

POWELL

POWELL

POWELL

POWELL

POWELL

POWELL

POWELL

POWELL

POWELL

POWELL

POWELL

POWELL

POWELL

POWELL

POWELL

POWELL

POWELL

POWELL

POWELL

POWELL

POWELL

POWELL

POWELL

POWELL

POWELL

POWELL

POWELL

POWELL

POWELL

POWELL

POWELL

POWELL

POWELL

POWELL

POWELL

POWELL

POWELL

POWELL

POWELL

POWELL

POWELL

POWELL

POWELL

POWELL

POWELL

POWELL

POWELL

POWELL

POWELL

POWELL

POWELL

POWELL

POWELL

POWELL

POWELL

POWELL

POWELL

POWELL

POWELL

POWELL

POWELL

POWELL

POWELL

POWELL

POWELL

POWELL

POWELL

POWELL

POWELL

POWELL

POWELL

POWELL

POWELL

POWELL

POWELL

POWELL

POWELL

POWELL

POWELL

POWELL

POWELL

POWELL

POWELL

POWELL

POWELL

POWELL

POWELL

POWELL

POWELL

POWELL

POWELL

POWELL

POWELL

POWELL

POWELL

POWELL

POWELL

POWELL

POWELL

POWELL

POWELL

POWELL

POWELL

POWELL

POWELL

POWELL

POWELL

POWELL

POWELL

POWELL

POWELL

POWELL

POWELL

POWELL

POWELL

POWELL

POWELL

POWELL

POWELL

POWELL

POWELL

POWELL

POWELL

POWELL

POWELL

POWELL

POWELL

POWELL