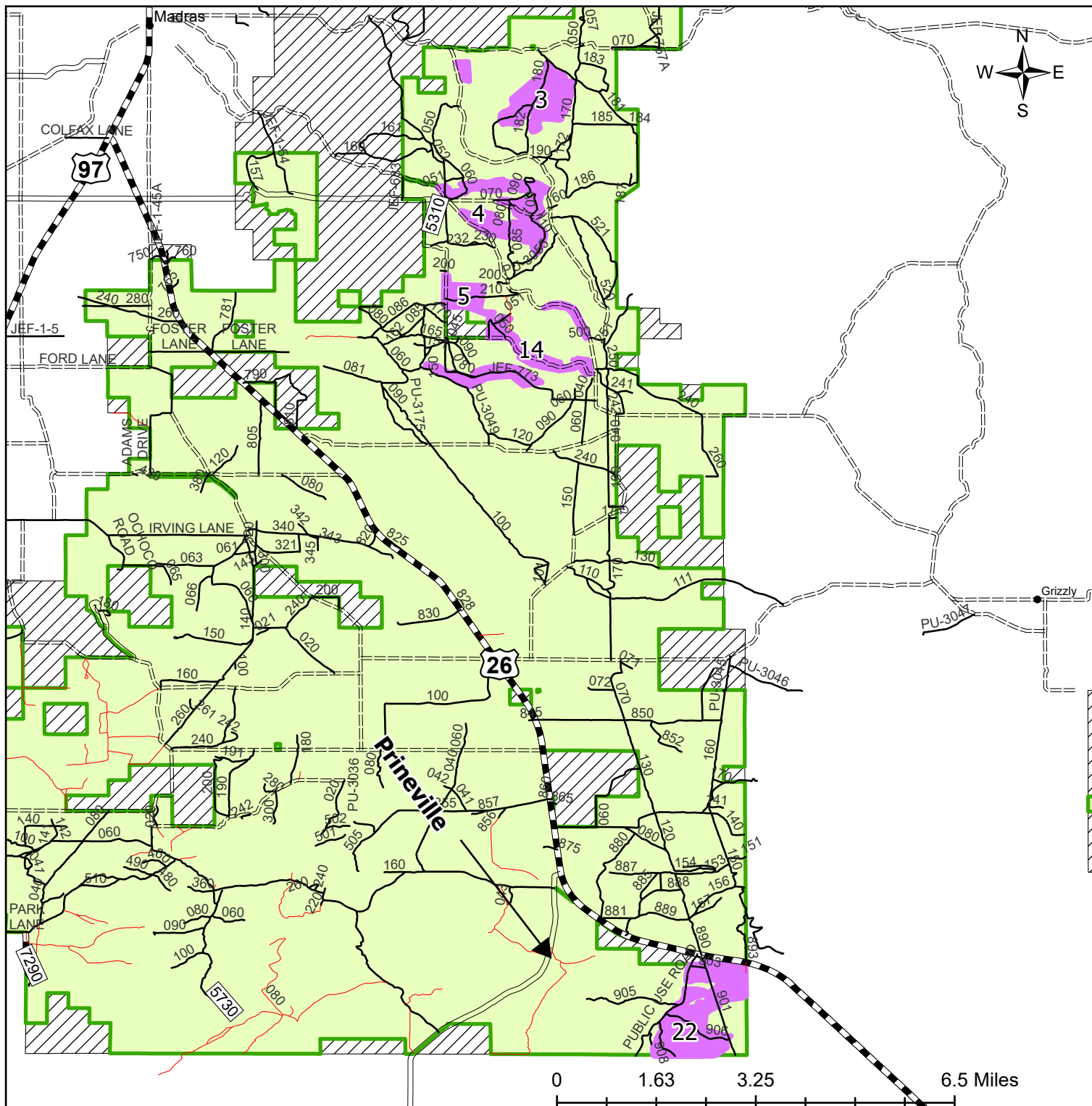


2025 Grassland Firewood Units Vicinity Map



Crooked River National Grassland Firewood Unit Rules

See Ochoco Firewood Synopsis for additional rules and regulations

1. No off-roading is permitted. Vehicles remain within 20 feet of the road.
2. Do not disassemble or remove material from constructed slash piles.

Legend

Ochoco Road System

- 5 - HIGH DEGREE OF USER COMFORT
- 4 - MODERATE DEGREE OF USER COMFORT
- 3 - SUITABLE FOR PASSENGER CARS

- 2 - HIGH CLEARANCE VEHICLES
- 1 - BASIC CUSTODIAL CARE (CLOSED)

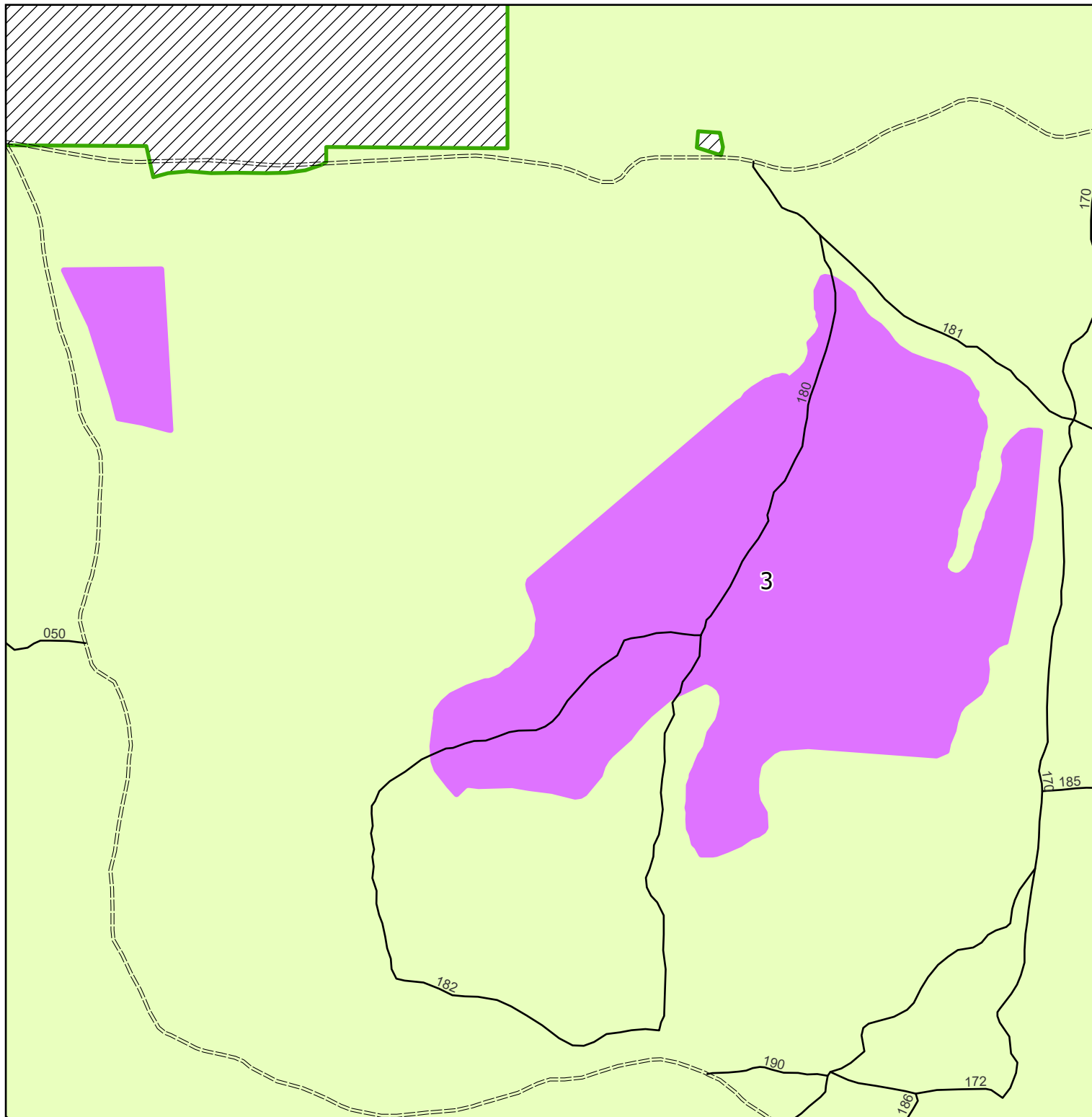
Ochoco National Forest Boundary

- NON FOREST SERVICE LANDS

- FOREST SERVICE LANDS
- Firewood Units



2025 Grassland Firewood Unit Maps



Crooked River National Grassland Firewood Unit Rules

See Ochoco Firewood Synopsis for additional rules and regulations

1. No off-roading is permitted. Vehicles remain within 20 feet of the road.
2. Do not disassemble or remove material from constructed slash piles.



Legend

Ochoco Road System

- 5 - HIGH DEGREE OF USER COMFORT
- 4 - MODERATE DEGREE OF USER COMFORT
- 3 - SUITABLE FOR PASSENGER CARS

- 2 - HIGH CLEARANCE VEHICLES
- 1 - BASIC CUSTODIAL CARE (CLOSED)



Ochoco National Forest Boundary

- ▨ NON FOREST SERVICE LANDS

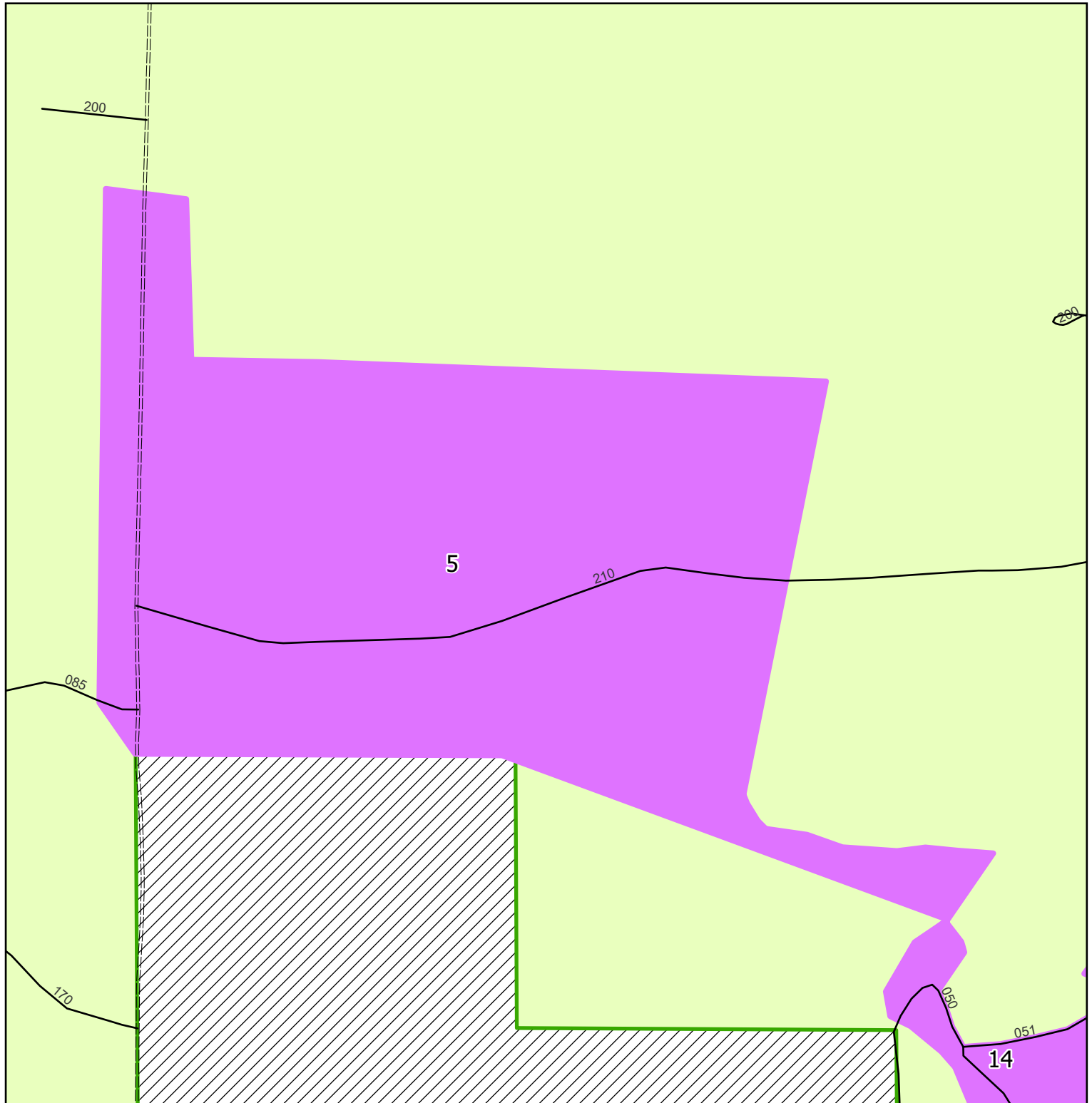
- ▭ FOREST SERVICE LANDS
- ▭ Firewood Units

The map displays the 4th and 5th wards of the City of Chicago. The 4th ward is shaded in light blue and is represented by Councilmember Scott W. Johnson. The 5th ward is shaded in light orange and is represented by Councilmember Brandon S. Johnson. The map includes the names of the council members, their districts, and the names of the streets they represent. The 4th ward is bounded by the Chicago River to the north, the city limits to the east, and the city limits to the south. The 5th ward is bounded by the city limits to the north, the city limits to the east, and the city limits to the south. The map also shows the names of the streets that run through the wards, including North Dearborn Street, North Halsted Street, North La Salle Street, North Madison Street, North Michigan Avenue, North State Street, North Wells Street, and North Wabash Avenue. The map also shows the names of the streets that run through the wards, including North Dearborn Street, North Halsted Street, North La Salle Street, North Madison Street, North Michigan Avenue, North State Street, North Wells Street, and North Wabash Avenue.

- 

-  FOREST SERVICE LANDS
-  Firewood Units

2025 Grassland Firewood Unit Maps



Crooked River National Grassland Firewood Unit Rules

See Ochoco Firewood Synopsis for additional rules and regulations

1. No off-roading is permitted. Vehicles remain within 20 feet of the road.
2. Do not disassemble or remove material from constructed slash piles.



Legend

Ochoco Road System

- 5 - HIGH DEGREE OF USER COMFORT
- 4 - MODERATE DEGREE OF USER COMFORT
- 3 - SUITABLE FOR PASSENGER CARS

- 2 - HIGH CLEARANCE VEHICLES
- 1 - BASIC CUSTODIAL CARE (CLOSED)

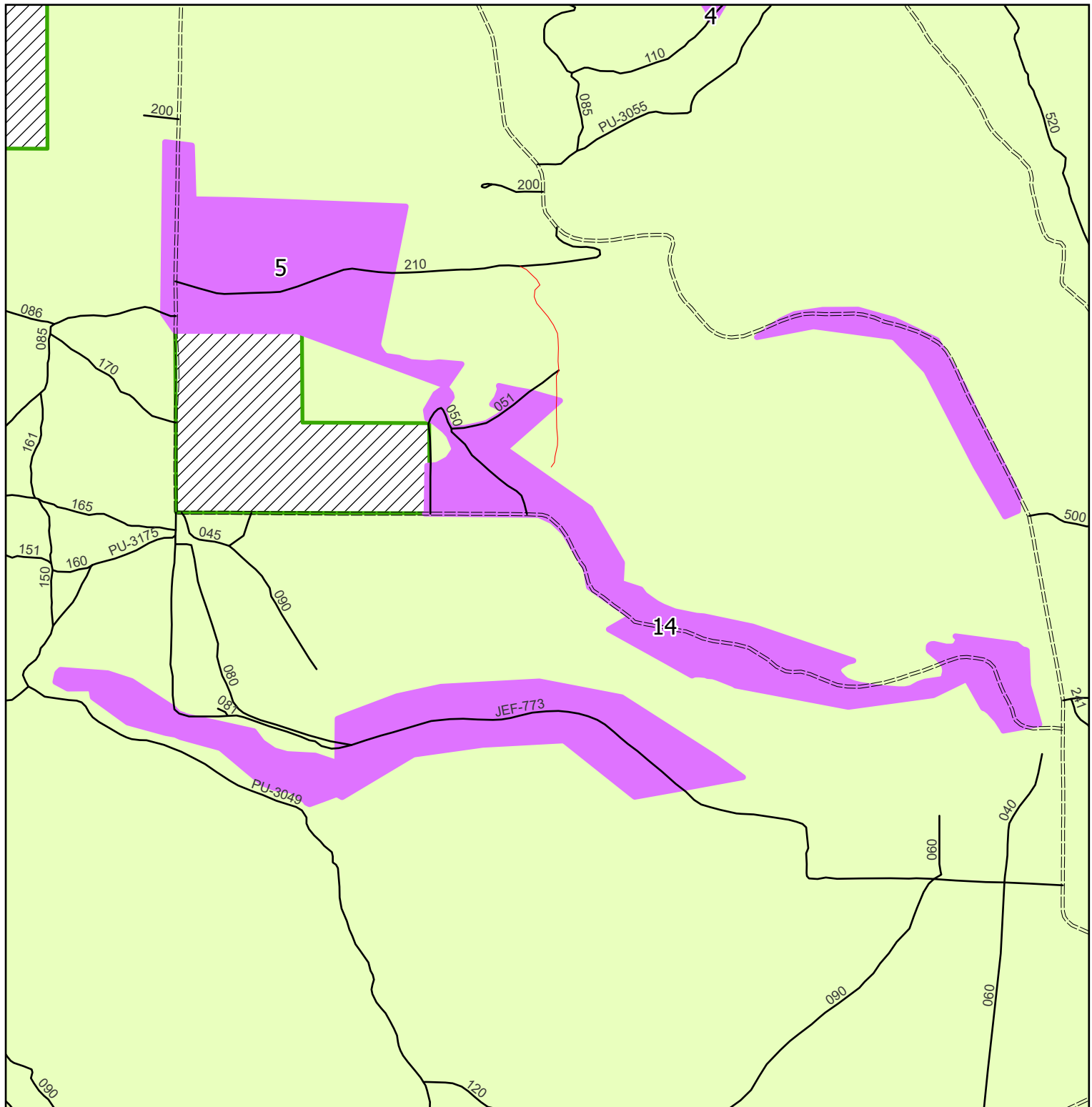
Ochoco National Forest Boundary

- NON FOREST SERVICE LANDS

FOREST SERVICE LANDS

Firewood Units

2025 Grassland Firewood Unit Maps



Crooked River National Grassland Firewood Unit Rules

See Ochoco Firewood Synopsis for additional rules and regulations

1. No off-roading is permitted. Vehicles remain within 20 feet of the road.
2. Do not disassemble or remove material from constructed slash piles.



Legend

Ochoco Road System

- 5 - HIGH DEGREE OF USER COMFORT
- 4 - MODERATE DEGREE OF USER COMFORT
- 3 - SUITABLE FOR PASSENGER CARS

- 2 - HIGH CLEARANCE VEHICLES
- 1 - BASIC CUSTODIAL CARE (CLOSED)

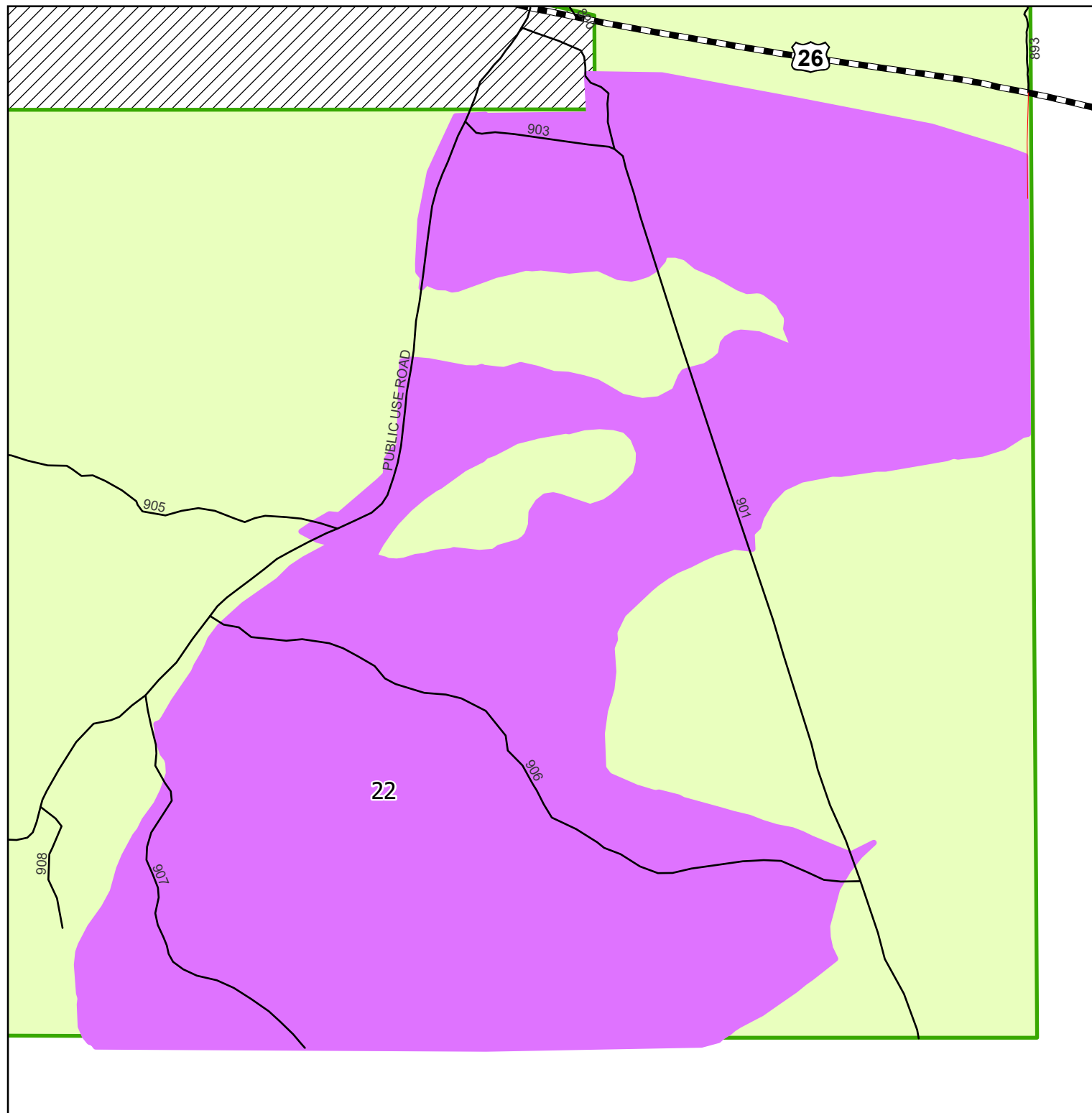
Ochoco National Forest Boundary

- NON FOREST SERVICE LANDS

FOREST SERVICE LANDS

Firewood Units

2025 Grassland Firewood Unit Maps



Crooked River National Grassland Firewood Unit Rules

See Ochoco Firewood Synopsis for additional rules and regulations

1. No off-roading is permitted. Vehicles remain within 20 feet of the road.
2. Do not disassemble or remove material from constructed slash piles.



Legend

Ochoco Road System

- 5 - HIGH DEGREE OF USER COMFORT
- 4 - MODERATE DEGREE OF USER COMFORT
- 3 - SUITABLE FOR PASSENGER CARS

- 2 - HIGH CLEARANCE VEHICLES
- 1 - BASIC CUSTODIAL CARE (CLOSED)

Ochoco National Forest Boundary

- ▨ NON FOREST SERVICE LANDS

- ▭ FOREST SERVICE LANDS
- ▭ Firewood Units