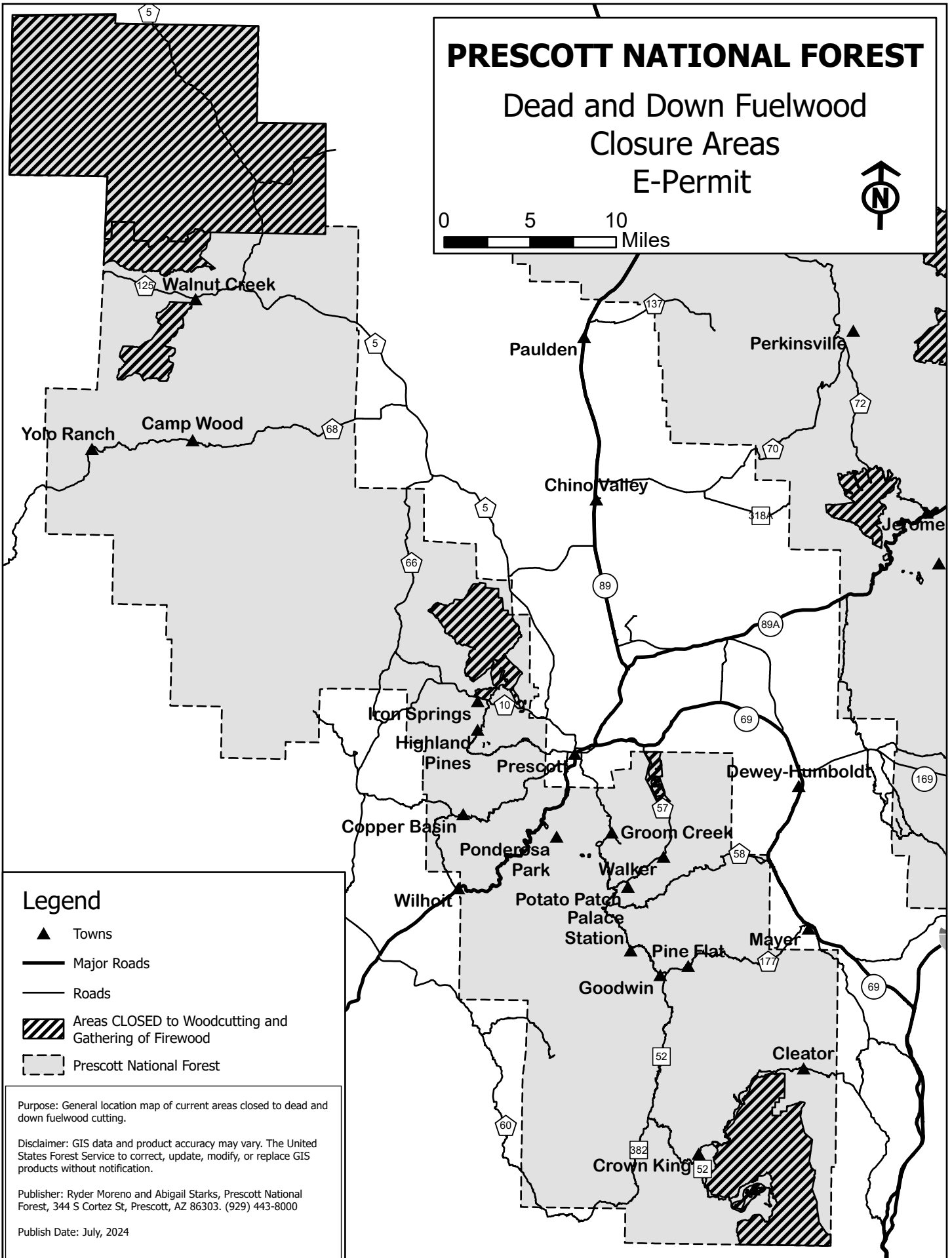


PRESCOTT NATIONAL FOREST

Dead and Down Fuelwood Closure Areas E-Permit

0 5 10
Miles



Legend

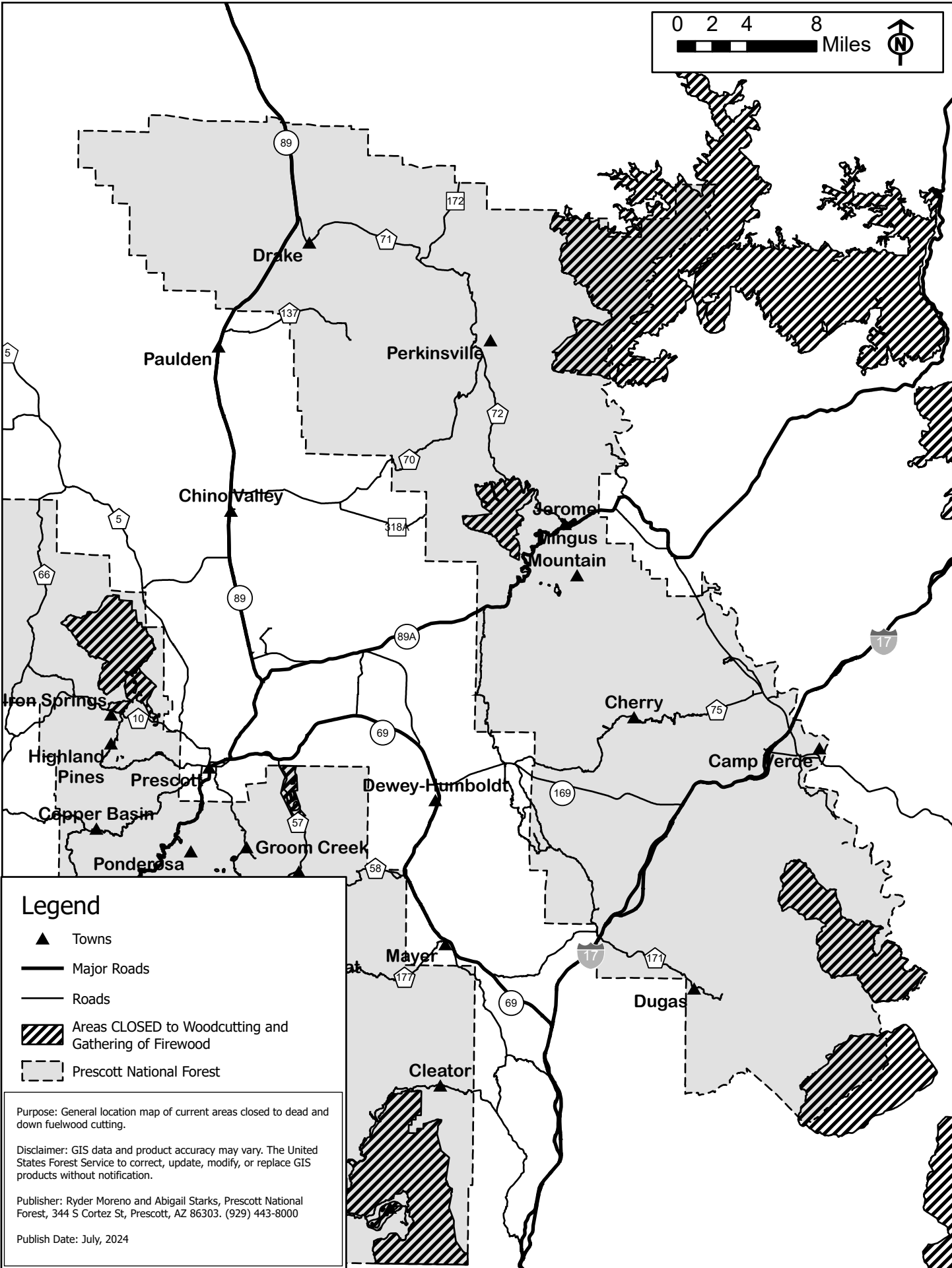
- ▲ Towns
- Major Roads
- Roads
- ▨ Areas CLOSED to Woodcutting and Gathering of Firewood
- - - Prescott National Forest

Purpose: General location map of current areas closed to dead and down fuelwood cutting.

Disclaimer: GIS data and product accuracy may vary. The United States Forest Service to correct, update, modify, or replace GIS products without notification.

Publisher: Ryder Moreno and Abigail Starks, Prescott National Forest, 344 S Cortez St, Prescott, AZ 86303. (929) 443-8000

Publish Date: July, 2024



Legend

- ▲ Towns
- Major Roads
- Roads
- ▨ Areas CLOSED to Woodcutting and Gathering of Firewood
- - - Prescott National Forest

Purpose: General location map of current areas closed to dead and down fuelwood cutting.

Disclaimer: GIS data and product accuracy may vary. The United States Forest Service to correct, update, modify, or replace GIS products without notification.

Publisher: Ryder Moreno and Abigail Starks, Prescott National Forest, 344 S Cortez St, Prescott, AZ 86303. (929) 443-8000

Publish Date: July, 2024