

**Note: This map is not the official Motor Vehicle Use Map (MVUM).** This map is a travel aid designed for use on mobile devices, such as smartphones or tablets. The roads depicted on this Travel Map are the same as the road system displayed on the MVUM. It is intended to supplement, not replace, the MVUM.

The MVUM is the legal document and final authority for displaying where it is legal to drive a motor vehicle on National Forest System lands. The MVUM is republished every year; be sure that you have the most current version. MVUMs are available at the local Forest Service offices or may be downloaded from our website.

**Map Limitations**  
This travel map and its underlying geospatial data are aids to motorized travel and should not be used for determining ownership, legal boundaries, jurisdictions, or restricted areas. This map does not display non-motorized or over-snow routes.

Designation of a road as "open" does not guarantee that it is passable. Weather conditions and natural events sometimes render designated roads impassable for extended periods. Many open roads receive little to no maintenance and may only be passable with high-clearance, all-wheel drive vehicles, or not at all.

The U.S. Forest Service makes no warranty, expressed or implied, nor assumes any liability or responsibility for the accuracy, reliability, completeness, or utility of these geospatial data, or for the improper or incorrect use of those data.

#### Operator Responsibilities

Operating a motor vehicle involves inherent risk and is a natural hazard. Drivers should exercise caution, anticipate hazards, and make adjustments as needed for current conditions (rough and rocky surfaces, snow, mud, and sand). Roads are not plowed during winter. Drivers should be aware of their vehicle's limitations, and be prepared to turn around. Use extreme caution at low water crossings, especially downstream of recent wildfires where flashfloods are possible. You are responsible for damages, injury or death caused by your actions. Take care to protect yourself and those around you.

Much of the Kaibab National Forest is remote and cellular telephone service is poor or not available in many areas. Medical and emergency services may have long response times or not be readily available. Motor vehicle operators should be prepared with adequate food, water, warm clothing, first aid supplies, and other needed equipment. Be prepared and check the weather forecast <http://www.weather.gov/lgz/>.

#### Prohibitions

**Driving Off of a Designated Open Road:** Only the routes that are displayed on the current MVUM are open to public motor vehicle use (36 CFR 261.13). Travel off of designated roads on National Forest System lands is prohibited. This prohibition applies regardless of the presence or absence of signs displaying designations for motor vehicle use. Many routes are signed with a numbered route marker, but only the routes displayed on the current MVUM are "open" for motor vehicle use.

**Resource Damage:** It is prohibited to operate a motor vehicle on National Forest System lands in a manner that damages or unreasonably disturbs the land, wildlife, or resources (36 CFR 261.12 (h)). It is illegal to collect, damage, or displace items of archeological or historical nature (43 CFR Part 10 - Native American Graves Protection and Repatriation Regulations).

**Closures:** Designated roads, trails, and areas may be subject to temporary or emergency closures to protect life, health, and safety, or natural or cultural resources. You must comply with notification signs of such restrictions (36 CFR 232.52 (b), 36 CFR 261.12 (b)). Violations of 36 CFR 261.13 are subject to a fine of up to \$5,000, or imprisonment for up to 6 months, or both (18 U.S.C. 3571(e)). Motor vehicle operators are responsible for compliance with all applicable federal, state, and local laws.

#### Off-Highway Vehicle Regulations

In Arizona, OHVs must be titled, licensed and insured. The Arizona Department of Transportation, Motor Vehicle Division (MVD) is the agency that issues certificates of title, registration, license plates, and OHV decals. Out-of-state residents may use an out-of-state OHV for up to 30 days while in Arizona if the vehicle displays a current decal or registration from the person's home state.

**OHV Decal:** The annual purchase of an Arizona OHV decal is required to operate OHVs on public and state lands.

**Street Legal OHVs:** Arizona state law permits OHVs to be driven legally on public roads and highways when they meet registration, license, and equipment requirements. Street legal OHVs must display Arizona license plates bearing the letters "M/C".

In the context of this Travel Map, "street legal" OHVs may be operated on any open road. Decal only (in on-street legal OHVs may only be driven on roads designated for "all vehicles." They are not authorized for roads designated as "high way legal vehicles only." Unauthorized drivers may only operate OHVs on routes designated "all vehicles" regardless of vehicle licensing. For more information about OHV regulations, go to <https://www.azgld.com/ohv>.

#### INFORMATION SOURCES

North Kaibab Ranger District  
(928) 643-7395  
430 S Main St, Fredonia AZ 86022

Kaibab Plateau Visitor Center  
(928) 643-7208  
Hwy 67 and 89A Jacob Lake, AZ 86022

Kaibab National Forest Supervisors Office  
(928) 635-8200  
800 S 6th St Williams, AZ 86046

Grand Canyon National Park  
(928) 638-7888  
(Visitor Info)

Grand Canyon National Park North Rim  
(928) 638-7864  
AZ-67 North Rim, AZ 86023

BLM Arizona Strip Field Office  
(435) 688-8200  
345 E Riverside Dr St. George, UT 84790

BLM Kanab Field Office  
(435) 644-1272  
669 S Hwy 89A Kanab, UT 84741

Arizona Game and Fish  
(928) 774-5227  
3500 S Lake Mary Rd Flagstaff, AZ 86001

Kane County Hospital  
(435) 644-5811  
355 Main St Kanab, UT 84741

Motorized Dispersed Camping Corridors				
Route Number	Distance From Side of Road	Vehicle Type	Dates Allowed	
206E, 225, 225A, 225F, 246, 246T, 247, 248F, 252B, 257, 257E, 257G, 258, 258A, 258B, 258C, 258K, 260, 260C, 265, 272D, 279, 415F, 417, 417B, 418R, 422P, 461G, 461H, 482, 487, 522, 626, 630D, 640, 640C, 640I, 641U, 757, 761, 800, 800K, 4169, 417J, 4188	300 feet either side	Same as permitted on road	Same as permitted on road	
208B, 209, 205B, 207, 209, 218, 218A, 225, 225H, 228, 255, 272A, 272C, 274, 274A, 274B, 274C, 274D, 274E, 274F, 275, 416, 425A, 425B, 429F, 454, 462A, 753, 769, 769A, 773, 4189	100 feet either side	Same as permitted on road	Same as permitted on road	



**tread lightly!**  
LEAVING A GOOD IMPRESSION

**Get Dirty**  
Go straight through mud puddles while maintaining a steady speed. Don't get stuck.

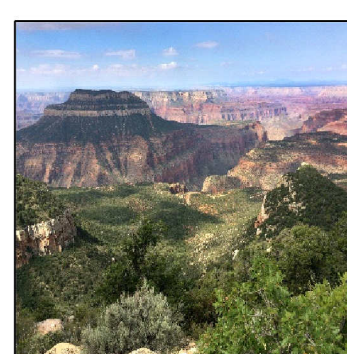
**No Shortcuts**  
Switchbacks are designed to maintain the stability of a trail, cutting them destroys their integrity.

**Be Sensitive**  
Wetlands are important and sensitive areas for wildlife and people. Please avoid them.

USDA is an equal opportunity provider, employer, and lender.

#### Feature Destinations:

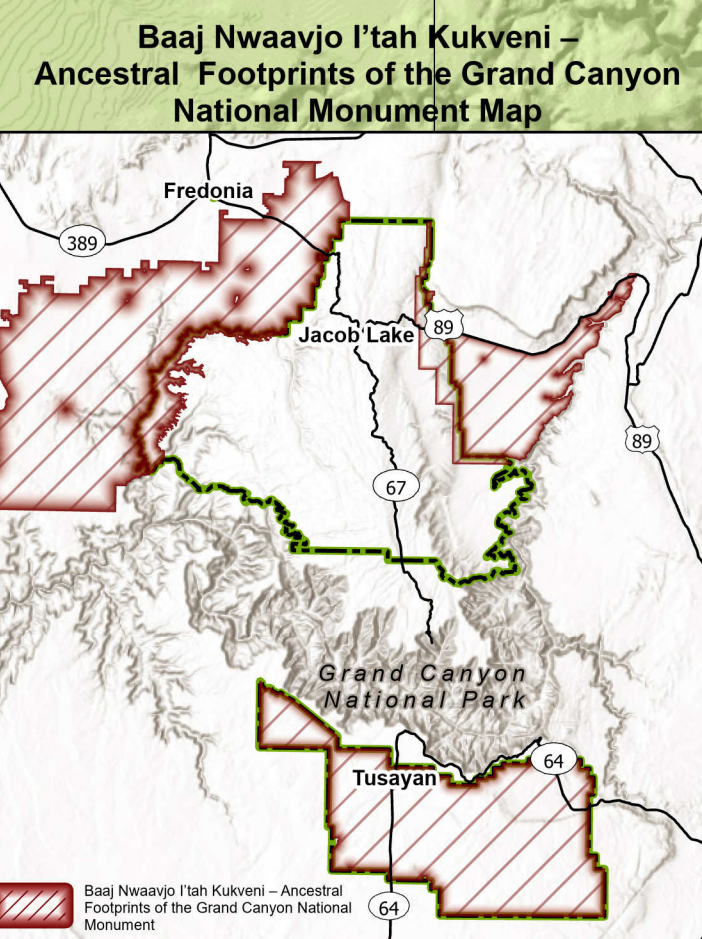
**Big Springs Cabins:** Big Springs Administrative Site is on the National Register of Historic Places and has been used by homesteaders, and later the Forest Service, since the 1800s. The area is a working Forest Service governmental location, but the 7 rentals cabins are located discretely at the far end of the site. Nestled among lush vegetation and several ponds, the space is surrounded by ponderosa pine and rolling hills. Big Springs has the most abundant water source on the Kaibab Plateau running down a limestone cliff and pooling near these cabins. The site is located on Forest Road 22, which provides easy access to scenic overlooks of the Grand Canyon and other points of interest on the forest. The cabins are open seasonally from May to November, reservations are available on [nccreation.gov](http://nccreation.gov).



**Rainbow Rim Trail:** Located along the rim of the Grand Canyon and connecting six scenic 'points' of land which are linked by a 27-mile spectacular hike, bike, and ride non-motorized trail. Each 'point' offers a different view and perspective of the Grand Canyon. The six 'points' are: Parissawampits, Fence, Locust, Rainbow Rim East, North Timp and Timp. Grand Canyon features such as Powell Plateau, Steamboat Mountain, Tapeats Amphitheater and Great Thumb Mesa can be seen from the Rim of the trail. In addition to the areas along the rim the trail passes through a forest of Ponderosa pine and drops into a number of steep side canyons filled with groves of Aspens and small meadows.



**Arizona Trail:** 91 miles of this National Scenic trail winds through a forest of mixed conifer, Ponderosa Pine, Pinyon and Juniper woodlands, sagebrush, and grassland within the North Kaibab Ranger District. There are four developed trail heads to access the Arizona Trail: Orderville, Murray Lake, East Rim and Boundary. Hike, trail run, bike, or ride this non-motorized 800 mile cross-state trail. At East Rim viewpoint, there are dramatic views of Saddle Mountain Wilderness, House Rock Valley, Marble Canyon and the Navajo Indian Reservation. For more information on the Arizona Trail, please visit [NorthKaibabVisitorCenter.com](http://NorthKaibabVisitorCenter.com) or [www.aztrail.org](http://www.aztrail.org)



- When possible, camp on previously impacted campsites and durable surfaces and place tents on a non-vegetated area.
- Dispose of waste properly, pack out all trash, and toilet paper.
- Minimize campfire impacts: do not burn trash, use existing campfire rings or fire pans.
- Keep pets leashed and under control at all times.
- Store food in your vehicle or a bear-proof container.
- Be considerate of other visitors. Many people camp on National Forest System lands to enjoy the peace and quiet.

#### Campfires

Campfires are generally permitted, EXCEPT:

- At developed trailheads, day use sites, and where posted.
- When fire restrictions are in effect. For current fire restrictions, visit <http://www.fs.usda.gov/Kaibab>

Only have a campfire when and where it is safe!

- Never leave a campfire unattended!
- Do not have a campfire when it is dry and windy.
- Dig a pit away from overhanging branches and circle it with rocks.
- Clear the area around the pit, remove combustible material.
- Have a shovel and water nearby.
- Use existing campfire rings where they occur.

Put your campfire completely out!

- If possible, allow the wood to burn completely to ash.
- Scrape embers and smoldering material from remaining wood.
- Pour LOTS of water over the entire pit and drown all embers.
- Stir ash and coals. Add water and stir 5-10 until the hissing sound stops.
- Make sure it is cool to the touch. If it's too hot to touch, it's too hot to leave!

**Report Wildfires or Illegal Activity**  
Emergency, call 911.

To report a wildfire or an illegal activity, call the Williams Dispatch Center at (928)635-2601.

- Provide as much information as possible, including:
- Your specific location
  - Your contact information
  - Any risks you observe

#### Adjacent Lands

**Tribal Lands** - The Tusayan Ranger District shares boundaries with the Navajo and Hopi Indian reservations. Permits may be required to enter these areas. Contact tribal offices for questions about access and permits.

**National Park Service** - The Grand Canyon National Park is to the north of the Tusayan Ranger District. Rules and regulations differ between National Park Service and National Forest System lands. Permits are required for camping. Contact the park for additional information about access and permits.

#### Multiple Uses

**Livestock Grazing** is a current and traditional use. Please slow down around cattle and ranching operations. Leave gates and wire fences as you find them.

**Logging and Quarry Operations:** Haul trucks carrying wood and rock materials are big and cannot slow down or change direction easily. If you are on a narrow road, pull to the side to let them pass.

**Firewood Cutting:** A permit is required for cutting firewood on the Kaibab National Forest. Personal use firewood permits generally cost \$20 each and are good for four cords of wood. Terms and restrictions apply. More information is available at [www.fs.usda.gov/gdp/kaibab/fire\\_comment](http://www.fs.usda.gov/gdp/kaibab/fire_comment).

**Traditional and Cultural Use:** Several area tribes have cultural and traditional ties to the land within the Kaibab National Forest. Be respectful of those seeking privacy for prayer or ceremonial activities.

If you discover errors on this travel aid or the Motor Vehicle Use Map, notice problems with road signs, or have comments about Travel Management implementation on Kaibab National Forest, please let us know by filling out a comment form on our Travel Management implementation web page at [www.fs.usda.gov/gdp/kaibab/fire\\_comment](http://www.fs.usda.gov/gdp/kaibab/fire_comment).

#### Outdoor Safety Best Practices:

- Know the weather forecast and check it frequently as conditions can change in a very short timeframe.
- Let someone outside of the area know exactly where you are and where you will be going daily.
- Do not park vehicles or camp in areas with snags (dead, standing trees) or where potential flood waters would prevent escape. Know where you are in relation to drainages.
- During windy conditions, remain in open areas that are free of trees (both live and burned) and snags as much as possible.
- If an area seems unsafe for any reason, leave.
- Have good maps and know where you are at all times.
- Keep a well-charged cell phone with you and check it frequently so you know when you're in an area where there is no coverage.
- Understand that there are many areas on public lands that are remote. It can take a very long time before responders can arrive if a rescue is required.

## North Kaibab Ranger District Kaibab National Forest

**Legend**

- Roads Open to All Vehicles
- Roads Open to Highway Legal Vehicles
- Highways, US, State
- Other Public Roads
- Motorized Dispersed Camping, Both Sides
- Motorized Dispersed Camping, One Side
- Trail
- FS Campground
- FS Cabin
- Gate Location
- Forest or Unit Boundary
- Non-National Forest System Lands within the National Forest
- Wilderness / Recommended Wilderness
- Political Boundary
- Not Open to Motorized Game Retrieval
- Game Management Units
- Tribal Lands
- Short Route Identifier

0 1 2 4 Miles

N

## Grand Canyon National Park