

Travel Map Purpose and Use

Note: This map is not the official Motor Vehicle Use Map (MVUM). This map is a travel aid designed for use on mobile devices, such as smartphones or tablets. The roads depicted on this Travel Map are the same as the road system displayed on the MVUM. It is intended to supplement, not replace, the MVUM.

The MVUM is the legal document and final authority for displaying where it is legal to drive a motor vehicle on National Forest System lands. The MVUM is republished every year to be sure that you have the most current version. MVUMs are available at the local Forest Service offices or may be downloaded from our website.

Map Limitations

This travel map and its underlying geospatial data are an aid to motorized travel and should not be used for determining ownership, legal boundaries, jurisdictions, or restricted areas. This map does not display non-motorized or over-snow uses.

Designation of a road as "open" does not guarantee that it is passable. Weather conditions and natural events sometimes render designated roads impassable for extended periods. Many open roads receive little to no maintenance and may only be passable with high-clearance, all-wheel drive vehicles, or not at all.

The U.S. Forest Service makes no warranty, expressed or implied, nor assumes any liability or responsibility for the accuracy, reliability, completeness, or utility of these geospatial data, or for the improper or incorrect use of those data.

Operator Responsibilities

Operating a motor vehicle involves inherent risk and natural hazards are common. Drivers should exercise caution, anticipate hazards, and make adjustments as needed for current conditions (rough and rocky surfaces, snow, mud, and sand). Roads are not plowed during winter. Drivers should be aware of their vehicle's limitations, and be prepared to turn around. Use extreme caution at low water crossings, especially downstream of recent wildfires where flashfloods are possible. You are responsible for damages, injury or death caused by your actions. Take care to protect yourself and those around you.

Much of the Kaibab National Forest is remote, and cellular telephone service is poor or not available in many areas. Medical and other emergency services may have long response times or not be readily available. Motor vehicle operators should be prepared with adequate food, water, warm clothing, first aid supplies, and other needed equipment. Be prepared and check the weather forecast at <http://www.weather.gov/lgtz/>.

Prohibitions

Driving Off of a Designated Open Road: Only the routes that are displayed on the current MVUM are open to public motor vehicle use (36 CFR 261.13). Travel off of designated roads on National Forest System lands is prohibited. This prohibition applies regardless of the presence or absence of signs displaying designations for motor vehicle use. Many routes are signed with a numbered route marker, but only the routes displayed on the current MVUM are "open" for motor vehicle use.

Resource Damage: It is prohibited to operate a motor vehicle on National Forest System lands in a manner that damages or unreasonably disturbs the land, wildlife, or resources (36 CFR 261.12 (h)). It is illegal to collect, damage, or displace items of archaeological or historical nature (36 CFR Part 10 - Native American Graves Protection and Repatriation Regulations).

Closures: Designated roads, trails, and areas may be subject to temporary or emergency closures to protect life, health and safety, or natural or cultural resources. You must comply with notification signs of such restrictions (36 CFR 212.52 (b), 36 CFR 261 subpart B).

Violations of 36 CFR 261.13 are subject to a fine of up to \$5,000, or imprisonment for up to 6 months, or both (18 U.S.C. 3571(e)). Motor vehicle operators are responsible for compliance with all applicable federal, state, and local laws.

Off-Highway Vehicle Regulations

In Arizona, OHVs must be titled, licensed and insured. The Arizona Department of Transportation Motor Vehicle Division (MVD) is the agency that issues certificates of title, registration, license plates, and OHV decals. Out-of-state residents may use an out-of-state OHV for up to 30 days while in Arizona if the vehicle displays a current decal or registration from the person's home state.

OHV Decal: The annual purchase of an Arizona OHV decal is required to operate OHVs on public and state lands.

Street Legal OHVs: Arizona state law permits OHVs to be driven legally on public roads and highways when they meet registration, licensing, and equipment requirements. Street legal OHVs must display Arizona license plates bearing the letters "MC".

In the context of this Travel Map, "street legal" OHVs may be operated on any open road. Decal only (non-street legal) OHVs may only be driven on roads designated for "all vehicles," "they are not authorized for roads designated as "high way-legal vehicles only." Unlicensed drivers may only operate OHVs on routes designated "all vehicles" regardless of vehicle licensing. For more information about OHV regulations, go to <https://www.azgfd.com/ohv/>.

INFORMATION SOURCES

Williams Ranger District

742 South Clover Road
Williams, Arizona 86046
(928) 635-5600

Tusayan Ranger District

176 Lincoln Loop
PO Box 3088
Grand Canyon, AZ 86023
(908) 638-0443

Kaibab National Forest Supervisor's Office

(928) 635-8200
www.fs.usda.gov/kaibab

Arizona State Parks

(602) 542-1474
<http://azstateparks.com/ohv/>

Arizona Game and Fish Department

(928) 774-5045
(602) 942-3000
www.azgfd.com/

Cocconino County Sheriff

(928) 774-4523
(800) 338-7888
www.cocconino.az.gov/2025/sheriffs-office

In the event of emergency

DIAL 911



Install GPS-enabled maps on your smartphone or tablet

Get the app: First, install the **Avenza PDF Maps** app on your smartphone or tablet. The app is available free from the Apple Store (Apple), or from the Google Play Store (Android). Use the QR Code Reader in the app to scan the box below.

This QR code will take you to the Kaibab digital MVUM and Travel Aid download page. From here you can download all of the Forest digital maps and Garmin Travel aids.

The Travel Map includes many features not included on the MVUM, and its road, trail, and area designations are identical to those depicted on the current MVUM. However, the Travel Map is not the "official MVUM," and should be considered to be a supplement to, not a substitute for, the MVUM. All map content is provided by the Kaibab National Forest.

A WiFi connection is recommended for this large download.

©2018 Map content provided by Kaibab National Forest is free, but your wireless carrier may assess data service charges.

OHV Safety

- Wear a helmet and other protective gear: eye protection, gloves, long-sleeved shirt, long pants, and over-the-ankle boots.
- Operators under the age of 18 are required to wear USDOT certified helmets.
- Never allow more riders than the OHV was designed for.
- Maintain safe following distance based on visibility and surface conditions.
- Make sure that your OHV is in good mechanical condition.
- Keep speeds, noise, and dust down around occupied areas.

Game Retrieval: Elk Only

A person who has legally hunted an elk may drive, or be driven, up to one mile off of the designated road system to retrieve a properly tagged elk. Hunters are required to use the most direct and least ground disturbing route in and out of the area. Under no circumstance may a second vehicle be used. Motorized big game retrieval is NOT allowed in travel restricted areas, across riparian areas, streams, or wetlands, or when travel is likely to result in resource damage (i.e. sensitive vegetation, wet or muddy conditions).

Parking Along Designated Routes

Motor vehicles may park up to 30 feet from the edge of a road surface when it is safe to do so without causing damage to resources or facilities, unless prohibited by state law, traffic sign, or order (36 CFR 261.54).

Motorized Dispersed Camping Rules

- Within designated camping corridors, limited cross-country travel is authorized up to 100 feet from designated routes for the purpose of ingress and egress to a campsite following the most direct and least ground disturbing route.
- You may park within 30 feet of any designated open road and walk in to a campsite, except where specifically prohibited.
- Camping is not allowed within a mile of developed campgrounds and rental cabins, or within 1/4 mile of waters where wildlife or domestic stock may be disturbed.
- The maximum allowable occupancy of NFS lands is 14 out of any 30 consecutive days, except as allowed by permit.

Camping Etiquette

- When possible, camp on previously impacted campsites and durable surfaces and place tents on a non-vegetated area.
- Dispose of waste properly, pack out all trash and toilet paper.
- Minimize campfire impacts: do not burn trash, use existing campfire rings or fire pans.
- Keep pets leashed and under control at all times.
- Store food in your vehicle or a bear-proof container.
- Be considerate of other visitors. Many people camp on National Forest System lands to enjoy the peace and quiet.

Campfires

Campfires are generally permitted, EXCEPT:

- At developed trailheads, day use sites, and where posted.
- When fire restrictions are in effect. For current fire restrictions, visit <http://www.fs.usda.gov/Kaibab>

Only have a campfire when and where it is safe!

- Never leave a campfire unattended!
- Do not have a campfire when it is dry and windy.
- Dig a pit away from overhanging branches and circle it with rocks.
- Clear the area around the pit, remove combustible material.
- Have a shovel and water nearby.
- Use existing campfire rings where they occur.

Put your campfire completely out!

- If possible, allow the wood to burn completely to ash.
- Scrape embers and unburned material from remaining wood.
- Pour LOTS of water over the entire pit and drown all embers.
- Stir ash and coals. Add water and dirt. Stir until the hissing sound stops.
- Make sure it is cool to the touch. If it's too hot to touch, it's too hot to leave!

Lend a hand, care for the land!

- Leave what you find. It is illegal to collect, damage, or displace items of archaeological or historical nature.
- Take what you brought. Practice pack-it-in, pack-it-out.
- Watch where you step! Do not trample cryptobiotic soil crusts or specialized vegetation such as mosses, cacti, succulents, lichens, or fleabanes.
- Do not feed wildlife, intentionally or unintentionally.
- Access springs, wetlands, or other water using designated trails and points of entry to prevent erosion and prevent trampling and inadvertent introduction of nonnative species and disease.

Report Wildfires or Illegal Activity

Emergency, call 911.
To report a wildfire or an illegal activity, call the Williams Dispatch Center at (928) 635-2601.

Provide as much information as possible, including:

- Your specific location
- Your contact information
- Any risks you observe

Multiple Uses

Livestock Grazing: is a current and traditional use. Please slow down around cattle and ranching operations. Leave gates and wire fences as you find them.

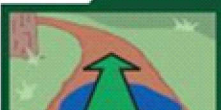
Logging and Quarry Operations: Haul trucks carrying wood and rock materials are big and cannot slow down or change direction easily. If you are on a narrow road, pull to the side to let them pass.

Fuelwood Cutting: A permit is required for cutting firewood on the Kaibab National Forest. Personal use fuelwood permits generally cost \$20 each and are good for four cords of wood. Terms and restrictions apply. More information is available at one of the Forest Service offices.

Traditional and Cultural Use: Several area tribes have cultural and traditional ties to the land within the Kaibab National Forest. Be respectful of those seeking privacy for prayer or ceremonial activities.

If you discover errors on this travel aid or the Motor Vehicle Use Map, notice problems with road signs, or have comments about Travel Management implementation on Kaibab National Forest, please let us know by filling out a comment form on our Travel Management Implementation web page at www.fs.usda.gov/gcna/kaibab/tmr_comment.

tread lightly!
LEAVING A GOOD IMPRESSION



Go straight through mud puddles while maintaining a steady speed. Don't get stuck.



Switchbacks are designed to maintain the stability of a trail, cutting them destroys their integrity.

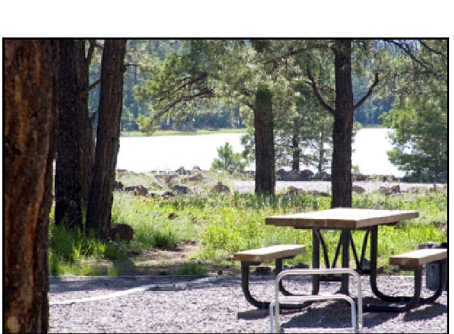


Wetlands are important and sensitive areas for wildlife and people. Please avoid them.

USDA is an equal opportunity provider, employer, and lender.

Feature Destinations:

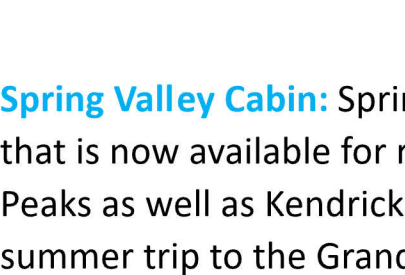
Catatract Lake: Catatract Lake is a beautiful day use area within the City of Williams. The lake is stocked with fish and offers a great fishing and picnic destination. Catatract is open year-round but may not be serviced regularly during the winter months.



Kaibab Lake: Kaibab Lake is just north of Williams on Highway 64. It features a large campground that is open May-October, as well as a day use area that stays open year-round. Whitehouse Lake is consistently stocked and offers a floating fishing pier for anglers.



Whitehorse Lake: Whitehorse Lake is secluded at the south end of the Kaibab National Forest and offers a retreat from some of the busier parts of the forest. There is a campground and day use area that are both open from May-October. The lake is also home several species of birds not often found in northern Arizona including cormorants, bald eagles, and great blue herons.



Spring Valley Cabin: Spring Valley Cabin is a former Forest Service work center that is now available for rent. It offers spectacular views of the San Francisco Peaks as well as Kendrick Mountain. It is a secluded retreat perfect for a summer trip to the Grand Canyon, or during the winter to enjoy the snow.

Reservations

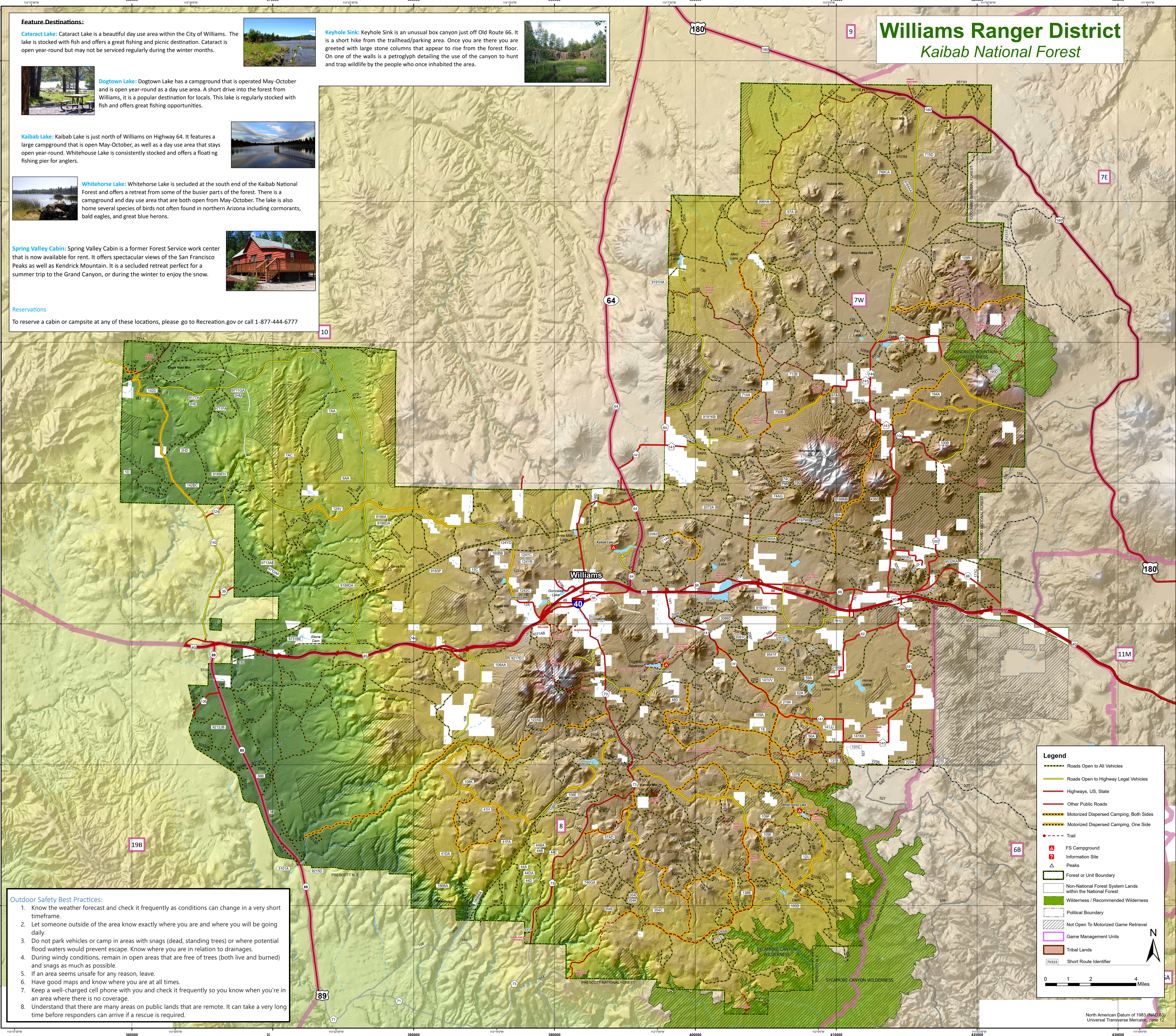
To reserve a cabin or campsite at any of these locations, please go to Recreation.gov or call 1-877-444-6777



Keyhole Sink: Keyhole Sink is an unusual box canyon just off Old Route 66. It is a short hike from the trailhead/parking area. Once you are there you are greeted with large stone columns that appear to rise from the forest floor. On one of the walls is a petroglyph detailing the use of the canyon to hunt and trap wildlife by the people who once inhabited the area.



Williams Ranger District Kaibab National Forest



Legend

- Roads Open to All Vehicles
- Roads Open to Highway Legal Vehicles
- Highways, US, State
- Other Public Roads
- Motorized Dispersed Camping, Both Sides
- Motorized Dispersed Camping, One Side
- Trail
- FS Campground
- Information Site
- Peaks
- Forest or Unit Boundary
- Non-National Forest System Lands within the National Forest
- Wilderness / Recommended Wilderness
- Political Boundary
- Not Open To Motorized Game Retrieval
- Game Management Units
- Tribal Lands
- Short Route Identifier

0 1 2 4 Miles

North American Datum of 1983 (NAD 83)
Universal Transverse Mercator, zone 12