

# OPERATOR RESPONSIBILITIES

Operating a motor vehicle on National Forest System roads, National Forest System trails, and in areas on National Forest System lands carries a greater responsibility than operating that vehicle in a city or other developed setting. Not only must you know and follow all applicable traffic laws, you need to show concern for the safety of others. You must be alert for the presence of other motor vehicles can lead to the temporary or permanent closure of any designated road, trail, or area. As a motor vehicle operator, you are also subject to State traffic laws including State requirements for licensing, registration, operation of the vehicle in question.

Motor vehicle use, especially off-highway vehicle use involves inherent risks that may cause property damage, personal injury, and possibly death to participants. Drive cautiously and anticipate rough surfaces and features, such as snow, mud, vegetation, and water crossings common to remote areas of the National Forest System. You voluntarily assume full responsibility for these dangers, risks, and dangers. Take care at all times to protect you and those under your responsibility.

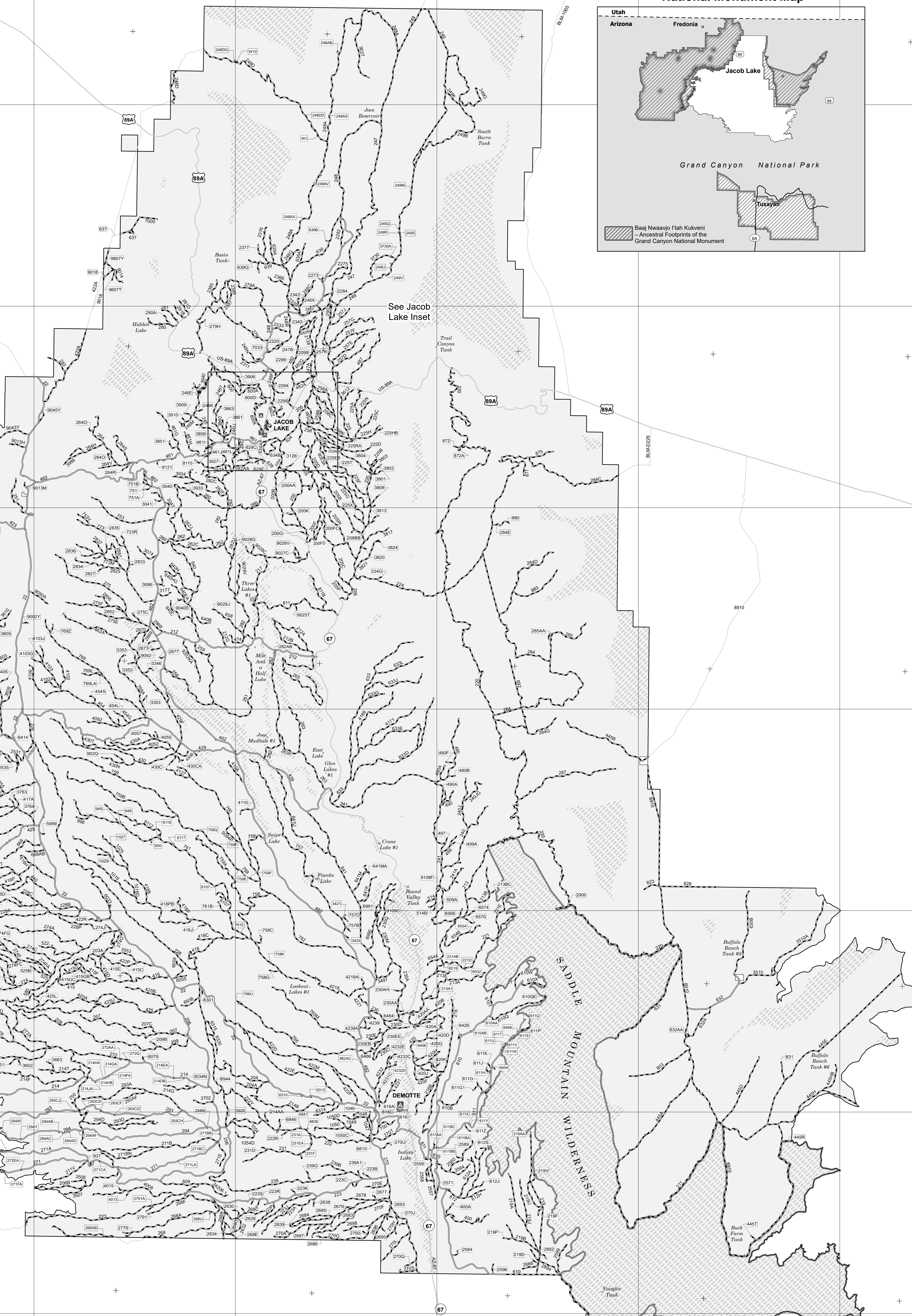
Much of the Kaibab National Forest is remote. Medical assistance may not be readily available elsewhere. Do not work in many areas of the Kaibab National Forest. Take adequate food, water, clothing, and other equipment appropriate for the conditions and expected weather.

**ALWAYS REMEMBER TO RESPECT PRIVATE LAND  
PROTECT YOUR PRIVILEGE. STAY ON DESIGNATED  
ROADS AND TRAILS AND IN DESIGNATED AREAS.**

Read and understand this map in its entirety. If you need assistance contact the Kaibab National Forest for clarification.

FS-837372

Designated roads may be subject to wet weather or winter road closures, or may be temporarily closed due to seasonal conditions, project-related work, emergency activities, or firefighting operations. Roads designated on this map are available for motorized use as depicted except when posted as being unsuitable for use due to wet conditions or other administrative or public safety needs. Please check the [Kalbar National Forest web page](#) for the latest information about the status of roads.



Grand Canyon National Park