

Sedona

Four Wheel Drive & Off-Highway Vehicle Routes



Use roads and trails at your own risk. For more information on safety practices and responsible use ethics, visit www.nohvcc.org and www.treadlightly.org

Off-Highway Vehicles (OHV) operating on unimproved roads and trails are required to purchase an Arizona Off-Highway Vehicle Decal. Visit www.azstateparks.com/ohv-registration for more information on the OHV Decal program. Funds from the program are put back to use for OHV programs across the state.

Trail Difficulty Ratings

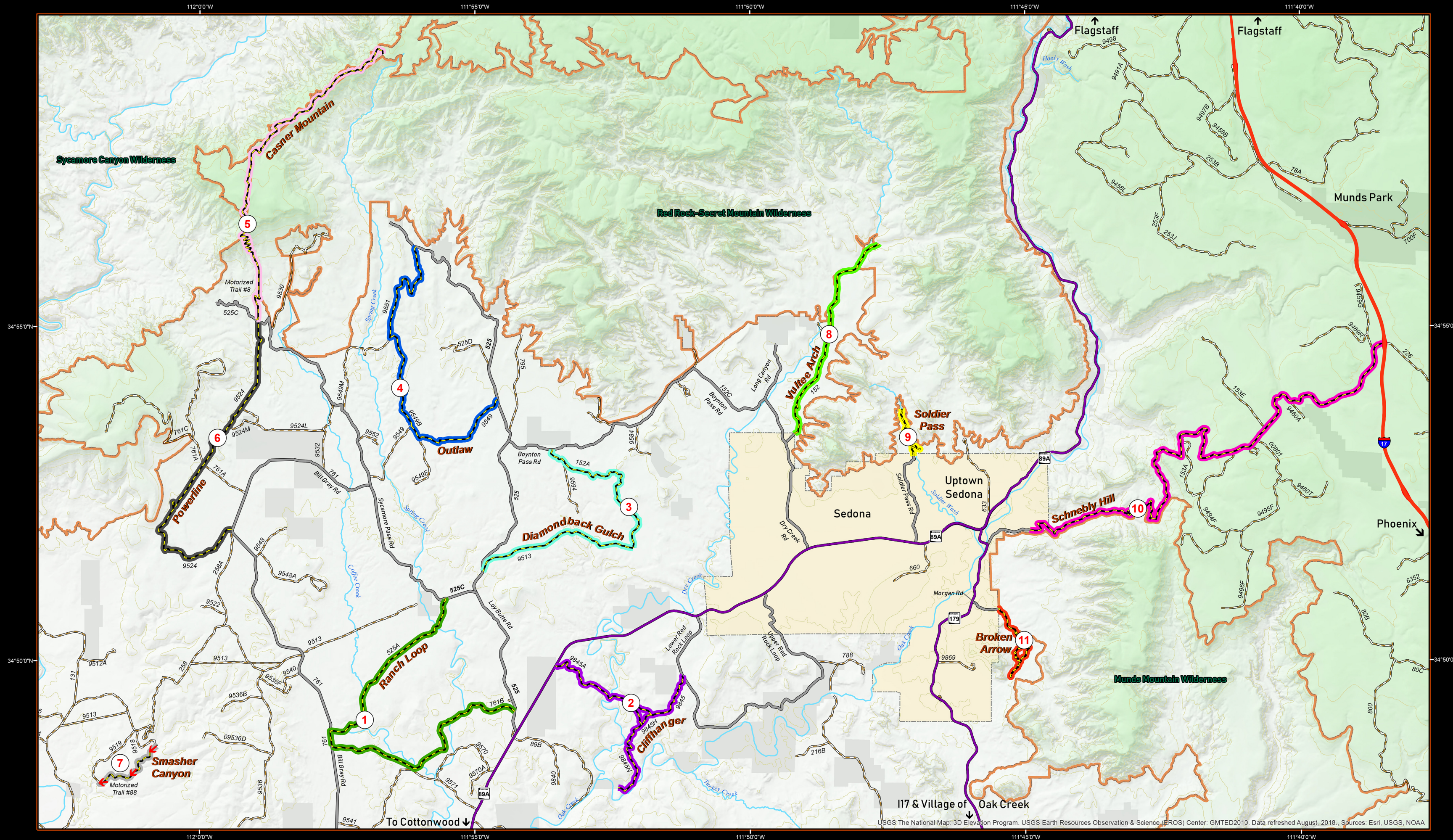
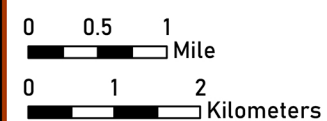
◆◆	Extreme Difficulty (Expert Recommended)
◆	Difficult 4x4
■	Moderate 4x4
●	Easy Dirt Road

Suggested 4x4 & OHV Trails

●	1	Ranch Loop
◆	2	Cliffhanger
◆	3	Diamondback Gulch
■	4	Outlaw
◆◆	5	Casner Mountain
◆◆	6	Powerline
◆◆	7	Smasher Canyon
■	8	Vultee Arch
◆	9	Soldiers Pass
■	10	Schnebly Hill
◆◆	11	Broken Arrow

Access Routes
 USFS Roads

Scale: 1 Inch = 1 Mile (1:63,360)
 Contour Interval: 100 feet



<p>1 ● Ranch Loop - 6.5 Mile Loop</p> <p>Forest Road: 525 - 761B - 761 - 525A Easy, sandy with several dry wash crossings. Loop route offers a quiet, serene route. Suitable for most 4x4s or AWD vehicles. High-Clearance recommended.</p>	<p>3 ◆ Diamondback Gulch - 6 Mile Loop</p> <p>Forest Road: 152A - 9513 The north section (152A) can be very slick and may be impassible when it rains. Includes steep, rocky pipeline on the west end (9513). Popular route. Suitable for most high-clearance 4x4s.</p>	<p>5 ◆◆ Casner Mountain - 6.75 Miles One-Way</p> <p>Motorized Trail #8 Permit required for vehicles over 62" in width. Obtain permit by calling the ranger station (928) 203-2900. Extremely difficult, rock steps, sheer cliffs. DO NOT attempt without extensive experience and appropriate vehicle. Suitable for high-clearance 4x4s (stock vehicles not recommended).</p>	<p>7 ◆◆ Smasher Canyon - 3.5 Miles One-Way</p> <p>Motorized Trail #88 Extremely difficult one-way canyon, requires expert skills, includes steep rock shelves, large boulder obstacles. Be prepared for serious obstacles and rock crawling. Highly modified 4x4 rock crawlers required (NO stock vehicles).</p>	<p>8 ■ Vultee Arch - 4 Miles One Way</p> <p>Forest Road: 152 Moderately demanding, with several rock shelves and ledges. Several trailheads for scenic hikes such as Devil's Bridge, Van Doren Cabin (FR 9817), or Vultee Arch. Expect to see many hikers on the road. Suitable for most high-clearance 4x4s. Respect the neighbors. Observe speed limits and minimize noise.</p>	<p>10 ■ Schnebly Hill - 11 miles One Way</p> <p>Forest Road: 153 One of the most scenic routes. It is a rough, rocky road with a more difficult section near the "Merry-Go-Round" with slickrock ruts requiring strategic tire placement. Popular with jeep tours. Suitable for most high-clearance 4x4s. Respect the neighbors. Observe speed limits and minimize noise.</p>
<p>2 ◆ Cliffhanger - 5.5 Miles One-Way</p> <p>Forest Road: 9845 - 9845A - 9845H - 9845N Nice views of Dry Creek. Has rocky ledges and steep downhill obstacles. Suitable for most high-clearance 4x4s.</p>	<p>4 ■ Outlaw - 10.5 Mile Loop</p> <p>Forest Road: 9549 - 9549B - 9551 Most of loop is easy, with several steep, rocky sections, and bedrock shelves to climb. Scenic views from top of mesa of red rocks and Black Mountain. See ancient ruins and pictographs at Honanki Heritage Site or Palatki (requires reservation and Red Rock Pass). Suitable for most high-clearance 4x4s.</p>	<p>6 ◆ Powerline - 6.5 Miles One-Way</p> <p>Forest Road: 9524 Steep and rocky, ups and downs, marvelous red rock views and very remote. There are a few difficult rock shelves where high clearance 4x4's need to pay close attention. Please make sure to close the gates after you go through. Suitable for most high-clearance 4x4s.</p>	<p>For More Information: Coconino National Forest, Red Rock District (928) 203-2900</p> <p>Respect neighborhoods when passing through by obeying speed limits and minimizing noise. Remember to share the trails and Tread Lightly to ensure a positive future for OHV recreation!</p>		<p>9 ◆ Soldier Pass - 2.5 Miles Round Trip</p> <p>Forest Road: 9904 - 9904B PERMIT REQUIRED at least 72 hours in advance available on the Coconino National Forest website. Road open daily 8AM-6PM only. Scenic route with challenging rock ledges and obstacles. Access through neighborhood streets. Respect the neighbors. Observe speed limits and minimize noise. Suitable for most high-clearance 4x4s.</p>
<p>11 ◆◆ Broken Arrow - 4 Miles Round Trip</p> <p>Forest Road: 179F & 179E Very challenging, skilled drivers recommended. Features slickrock, rock ledges and "the steps". Expect heavy traffic, popular with jeep tours, hikers, and bikers. Modified high clearance vehicles with short wheelbase and skid plates recommended, not for stock vehicles. Respect the neighbors. Observe speed limits and minimize noise.</p>					