

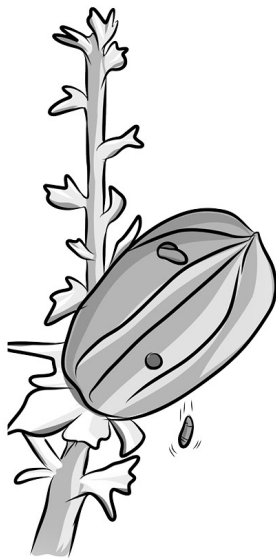
Life of the Yucca Moth

The yucca moth and the yucca plant depend on each other to survive and flourish. This story is about a moth's life cycle from egg to adult.

DIRECTIONS: Number each life phase in order: 1, 2, 3, and 4.

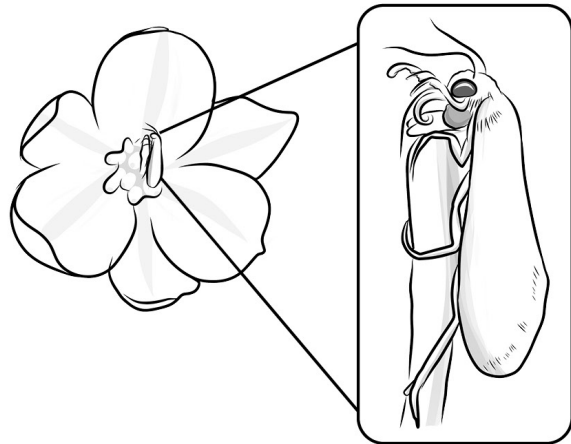
#

In late summer, the larva chews its way out of the pod, then falls to grow and change underground.



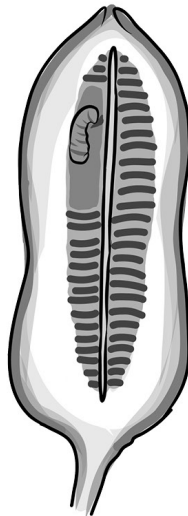
#1

In spring, adult moths emerge from the ground. A pair mates and then the female moth pollinates the yucca plant before laying her eggs.



#

In summer, a tiny larva hatches inside the seed pod. It munches yucca seeds and grows.



#

In fall, the pupa rests underground. It waits for rain to awaken it and for the cycle to begin again.

