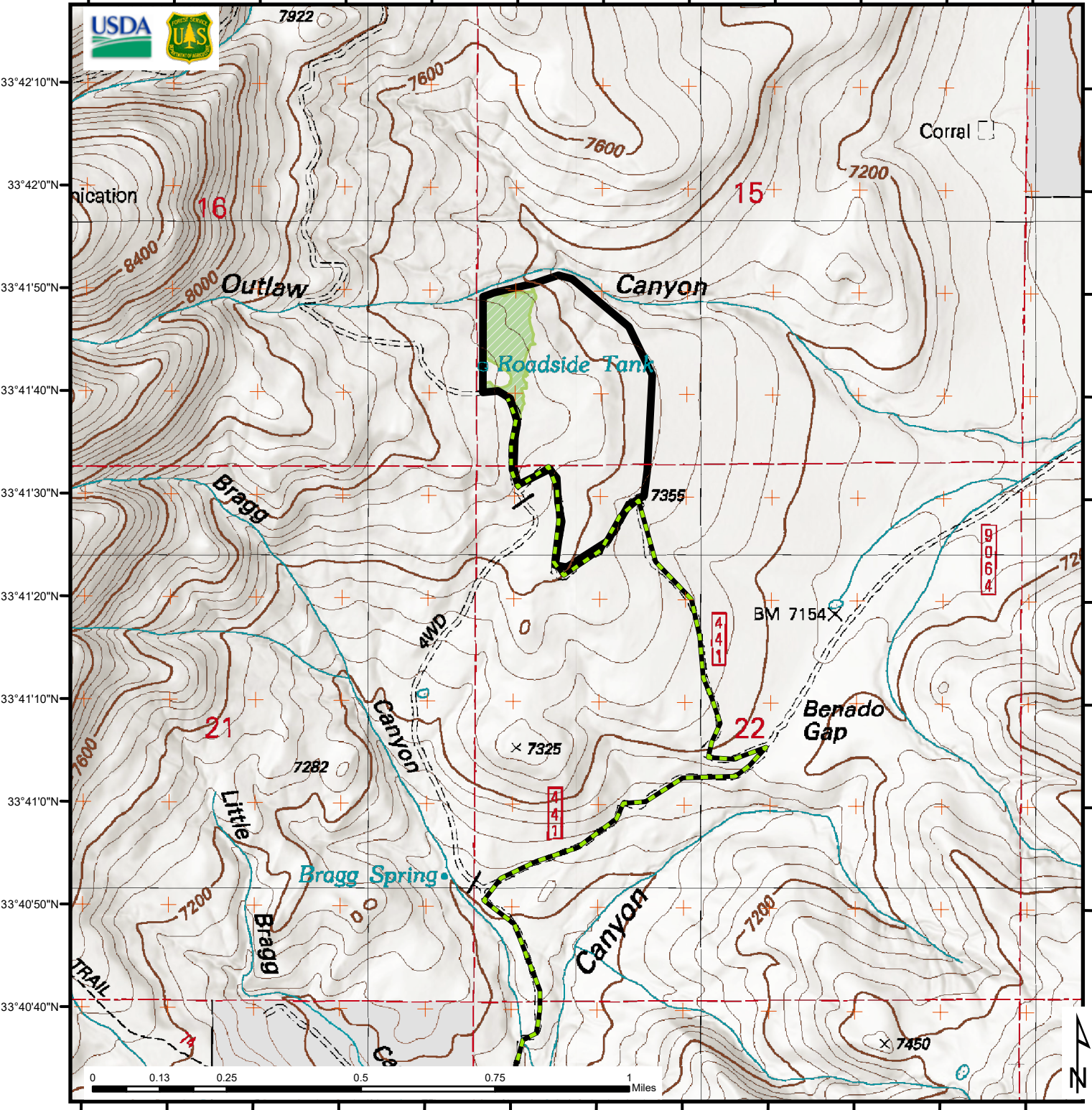
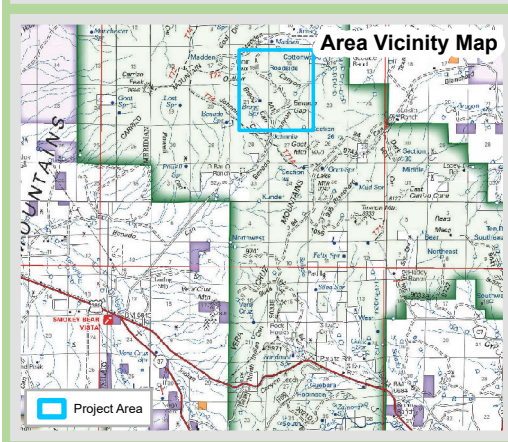
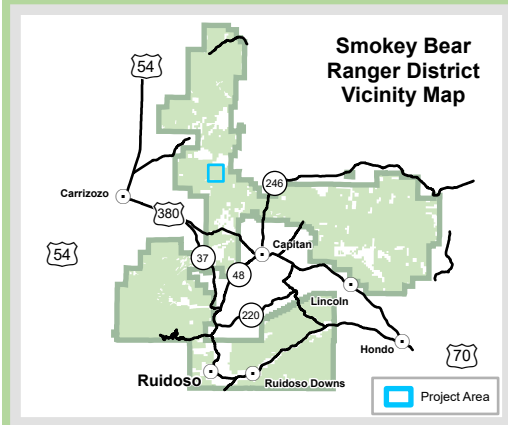


105°41'20"W 105°41'10"W 105°41'0"W 105°40'50"W 105°40'40"W 105°40'30"W 105°40'20"W 105°40'10"W 105°40'0"W 105°39'50"W 105°39'40"W 105°39'30"W



# Lincoln National Forest Smokey Bear Ranger District

## Carrizo Personal Pole wood Area



From Hwy NM-37, turn right onto US-380 and drive for 1 mile before turning left onto O Bar O Road. Continue driving for approximately 4 miles, then take a slight right onto FS Road 441. Continue on 441 for another 4 miles and the unit will be on the right. The boundary is marked with blue flagging.