

**PURPOSE AND CONTENTS OF THIS MAP**

The designations shown on this motor vehicle use map (MVUM) were made by the responsible official pursuant to 36 CFR 212.51, are effective as of the date on the front cover of this MVUM, and will remain in effect until superseded by an updated MVUM publication.

It is the responsibility of the user to acquire the current MVUM. This MVUM shows the National Forest System roads, National Forest System trails, and the areas on National Forest System lands in the Mt. Hood National Forest that are designated for motor vehicle use pursuant to 36 CFR 212.51. This MVUM also identifies the vehicle classes allowed on each route and in each area; and any seasonal restrictions that apply on those routes and in those areas.

Designation of a road, trail, or area for motor vehicle use by a particular class of vehicle under 36 CFR 212.51 should not be interpreted as encouraging or inviting use or implying that the road, trail or area is passable, actively maintained, or safe for travel. Motor vehicle designations include parking along designated routes and at facilities associated with designated routes when it is safe to do so and when not causing damage to National Forest System resources. Seasonal weather conditions and natural events may render designated roads and trails impassable for extended periods. Designated areas may contain dangerous or impassable terrain. Many designated roads and trails may be passable only by high-clearance vehicles or four-wheel-drive vehicles. Maintenance of designated roads and trails will depend on available resources, and many may receive little maintenance.

This motor vehicle use map identifies those roads, trails, and areas designated for the motor vehicle use under 36 CFR 212.51 for the purpose of enforcing the prohibition at 36 CFR 261.13. This is a limited purpose. The other public roads are shown for information and navigation purposes only and are not subject to designation under the Forest Service travel management regulation.

This map designates roads and trails on National Forest System roads, National Forest System trails, and areas on National Forest System lands.

**PROHIBITIONS**

It is prohibited to possess or operate a motor vehicle on National Forest System lands on the Mt. Hood National Forest other than in accordance with these designations (36 CFR 261.13).

Violators of 36 CFR 261.13 are subject to a fine of up to \$5,000, imprisonment for up to 6 months, or both (18 U.S.C. 3271(a)). This prohibition applies regardless of the presence or absence of signs.

This map does not display nonmotorized uses, over-snow vehicles, or other facilities and attractions on the Mt. Hood National Forest. Obtain forest visitor information from the local national forest office.

Designated roads, trails and areas may also be subject to temporary, emergency closures. As a visitor, you must comply with signs notifying you of such restrictions. A national forest may issue an order to close a road, trail or area on a temporary basis to protect the life, health, or safety of forest visitors or the natural or cultural resources in these areas. Such a temporary emergency closure is consistent with the Travel Management Rule (36 CFR 212.52 (b), 36 CFR 261 subpart B).

The designation "road or trail open to all motor vehicles" does not supersede State traffic law.

**EXPLANATION OF LEGEND ITEMS**

Roads Open to Highway Legal Vehicles Only: These roads are open only to motor vehicles licensed under State law for general operation on all public roads within the state.

Roads Open to All Vehicles: These roads are open to all motor vehicles, including smaller off-highway vehicles that may not be licensed for highway use (but not to oversize or overweight vehicles under State traffic law).

Trails Open to All Vehicles: These trails are open to all motor vehicles, including both highway legal and nonhighway legal vehicles.

Trails Open to Vehicles 50 inches or Less in Width: Trails open only to motor vehicles less than 50 inches in width at the widest point on the vehicle.

Trails Open to Wheeled Vehicles 50" or Less in Width: These trails are open only to wheeled, motor vehicles less than 50 inches in width at the widest point on the vehicle.

Trails Open to Motorcycles Only: These trails are open only to motorcycles. Sidecars are not permitted.

Special Vehicle Designation: This symbol indicates the road or trail is open to classes of vehicles other than those listed above. Refer to the Seasonal and Special Designation Table for further instructions.

Seasonal Designation: This symbol, used in conjunction with one of the other road or trail symbols, indicates that the road or trail is open only during certain portions of the year. Refer to Seasonal and Special Designation Table for further instructions.

Other Public Roads and Trails: Interstate, Highways, U.S. State, County, Other Public Roads, Other Public Trails. These symbols are used to show routes the Forest Service does not have jurisdiction over and has not designated for motorized use. These symbols are part of the reference layers showing connections to towns and cities outside the forest boundary.

Short Route Identifier: (70333) This symbol is used for roads that are too short to show a symbol type on the map. The symbol contains the number of the road or trail. Users should refer to the corresponding number in the Short Route Table for designation information.

Motorized Trailhead: (M) This symbol indicates a trailhead for access to a motorized route. Not all motorized routes have trailheads and those that do may range from primitive to developed.

**INFORMATION SOURCES**

Mt. Hood National Forest Headquarters  
16400 Champion Way  
Sandy, OR 97055  
503-668-1700  
<http://www.fs.usda.gov/mthood>

Barlow Ranger District  
760 NE Court St.  
Dufur, OR 97005  
541-467-2291

Clackamas River Ranger District  
16400 Champion Way  
Sandy, OR 97055  
971-333-4100

Hood River Ranger District  
6750 Highway 25  
Mt. Hood-Parkdale, OR 97041  
541-352-6002

Zigzag Ranger District  
70220 E Highway 26  
Zigzag, OR 97049  
503-622-3191

**OPERATOR RESPONSIBILITIES**

Operating a motor vehicle on National Forest System roads, National Forest System trails, and in areas on National Forest System lands carries a greater responsibility than operating that vehicle in a city or other developed setting. Not only must you know and follow all applicable traffic laws, you need to show concern for the environment as well as other forest users. The misuse of motor vehicles can lead to the temporary or permanent closure of any designated road, trail, or area. As a motor vehicle operator, you are also subject to State traffic law, including State requirements for licensing, registration, and operation of the vehicle in question.

Medical assistance may not be readily available. Cellular telephones do not work in many areas of the Mt. Hood National Forest. Take adequate food, water, first-aid supplies, and other equipment appropriate for the conditions and expected weather.

ALWAYS REMEMBER TO RESPECT PRIVATE LAND! PROTECT YOUR PRIVILEGE. STAY ON DESIGNATED ROADS AND TRAILS AND IN DESIGNATED AREAS.

Read and understand this map in its entirety. If you have questions, please contact the Mt. Hood National Forest for clarification.

As a motor vehicle operator on a National Forest System road, trail, or area you must comply with this map, as well as all Federal, State, and local laws and regulations. Compliance with these rules is your responsibility.

**VICINITY MAP**

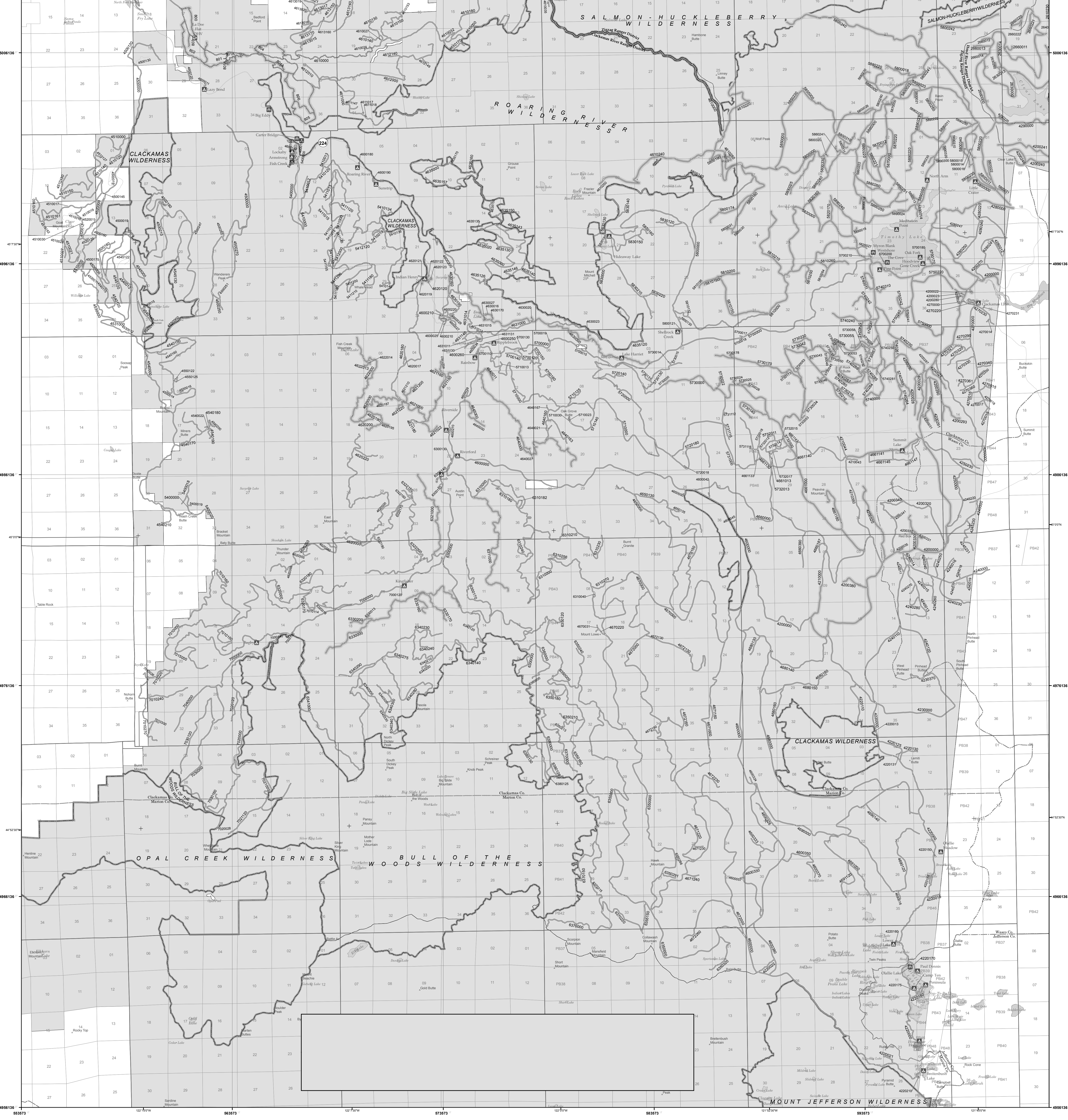
OREGON

**tread lightly!**  
LEAVING A GOOD IMPRESSION

**Legend**

- Roads Open to Highway Legal Vehicles
- Roads Open to All Vehicles
- Trails Open to All Vehicles
- Trails Open to Vehicles 50" or Less in Width
- Trails Open to Wheeled Vehicles 50" or Less in Width
- Trails Open to Motorcycles Only
- Special Vehicle Designation (See Table)
- Seasonal Designation (See Table)
- Interstate
- Highways, U.S. State, County
- Other Public Roads
- Other Public Trails
- Short Route Identifier
- FS Campground
- Phone Area
- Motorized Trailhead
- Peaks
- Forest or Unit Boundary
- National Forest System Lands
- Non-National Forest System Lands within the National Forest
- Wilderness Areas
- Political Boundary
- Township and Range Lines
- Section Lines
- Lakes and Rivers

Scale: 0 0.3 0.6 1.2 1.8 2.4 Miles



Road Number	Designation	Special Vehicle Designation	Dates Allowed
800, 801, 802, 803, 804, 805, 806	Special Vehicle Designation, with Seasonal Designation	ATV and Motorcycles	04/01-10/31
200000, 200001, 200002, 200003, 200004, 200005, 200006, 200007, 200008, 200009, 200010, 200011, 200012, 200013, 200014, 200015, 200016, 200017, 200018, 200019, 200020, 200021, 200022, 200023, 200024, 200025, 200026, 200027, 200028, 200029, 200030, 200031, 200032, 200033, 200034, 200035, 200036, 200037, 200038, 200039, 200040, 200041, 200042, 200043, 200044, 200045, 200046, 200047, 200048, 200049, 200050, 200051, 200052, 200053, 200054, 200055, 200056, 200057, 200058, 200059, 200060, 200061, 200062, 200063, 200064, 200065, 200066, 200067, 200068, 200069, 200070, 200071, 200072, 200073, 200074, 200075, 200076, 200077, 200078, 200079, 200080, 200081, 200082, 200083, 200084, 200085, 200086, 200087, 200088, 200089, 200090, 200091, 200092, 200093, 200094, 200095, 200096, 200097, 200098, 200099, 200100, 200101, 200102, 200103, 200104, 200105, 200106, 200107, 200108, 200109, 200110, 200111, 200112, 200113, 200114, 200115, 200116, 200117, 200118, 200119, 200120, 200121, 200122, 200123, 200124, 200125, 200126, 200127, 200128, 200129, 200130, 200131, 200132, 200133, 200134, 200135, 200136, 200137, 200138, 200139, 200140, 200141, 200142, 200143, 200144, 200145, 200146, 200147, 200148, 200149, 200150, 200151, 200152, 200153, 200154, 200155, 200156, 200157, 200158, 200159, 200160, 200161, 200162, 200163, 200164, 200165, 200166, 200167, 200168, 200169, 200170, 200171, 200172, 200173, 200174, 200175, 200176, 200177, 200178, 200179, 200180, 200181, 200182, 200183, 200184, 200185, 200186, 200187, 200188, 200189, 200190, 200191, 200192, 200193, 200194, 200195, 200196, 200197, 200198, 200199, 200200, 200201, 200202, 200203, 200204, 200205, 200206, 200207, 200208, 200209, 200210, 200211, 200212, 200213, 200214, 200215, 200216, 200217, 200218, 200219, 200220, 200221, 200222, 200223, 200224, 200225, 200226, 200227, 200228, 200229, 200230, 200231, 200232, 200233, 200234, 200235, 200236, 200237, 200238, 200239, 200240, 200241, 200242, 200243, 200244, 200245, 200246, 200247, 200248, 200249, 200250, 200251, 200252, 200253, 200254, 200255, 200256, 200257, 200258, 200259, 200260, 200261, 200262, 200263, 200264, 200265, 200266, 200267, 200268, 200269, 200270, 200271, 200272, 200273, 200274, 200275, 200276, 200277, 200278, 200279, 200280, 200281, 200282, 200283, 200284, 200285, 200286, 200287, 200288, 200289, 200290, 200291, 200292, 200293, 200294, 200295, 200296, 200297, 200298, 200299, 200300, 200301, 200302, 200303, 200304, 200305, 200306, 200307, 200308, 200309, 200310, 200311, 200312, 200313, 200314, 200315, 200316, 200317, 200318, 200319, 200320, 200321, 200322, 200323, 200324, 200325, 200326, 200327, 200328, 200329, 200330, 200331, 200332, 200333, 200334, 200335, 200336, 200337, 200338, 200339, 200340, 200341, 200342, 200343, 200344, 200345, 200346, 200347, 200348, 200349, 200350, 200351, 200352, 200353, 200354, 200355, 200356, 200357, 200358, 200359, 200360, 200361, 200362, 200363, 200364, 200365, 200366, 200367, 200368, 200369, 200370, 200371, 200372, 200373, 200374, 200375, 200376, 200377, 200378, 200379, 200380, 200381, 200382, 200383, 200384, 200385, 200386, 200387, 200388, 200389, 200390, 200391, 200392, 200393, 200394, 200395, 200396, 200397, 200398, 200399, 200400, 200401, 200402, 200403, 200404, 200405, 200406, 200407, 200408, 200409, 200410, 200411, 200412, 200413, 200414, 200415, 200416, 200417, 200418, 200419, 200420, 200421, 200422, 200423, 200424, 200425, 200426, 200427, 200428, 200429, 200430, 200431, 200432, 200433, 200434, 200435, 200436, 200437, 200438, 200439, 200440, 200441, 200442, 200443, 200444, 200445, 200446, 200447, 200448, 200449, 200450, 200451, 200452, 200453, 200454, 200455, 200456, 200457, 200458, 200459, 200460, 200461, 200462, 200463, 200464, 200465, 200466, 200467, 200468, 200469, 200470, 200471, 200472, 200473, 200474, 200475, 200476, 200477, 200478, 200479, 200480, 200481, 200482, 200483, 200484, 200485, 200486, 200487, 200488, 200489, 200490, 200491, 200492, 200493, 200494, 200495, 200496, 200497, 200498, 200499, 200500, 200501, 200502, 200503, 200504, 200505, 200506, 200507, 200508, 200509, 200510, 200511, 200512, 200513, 200514, 200515, 200516, 200517, 200518, 200519, 200520, 200521, 200522, 200523, 200524, 200525, 200526, 200527, 200528, 200529, 200530, 200531, 200532, 200533, 200534, 200535, 200536, 200537, 200538, 200539, 200540, 200541, 200542, 200543, 200544, 200545, 200546, 200547, 200548, 200549, 200550, 200551, 200552, 200553, 200554, 200555, 200556, 200557, 200558, 200559, 200560, 200561, 200562, 200563, 200564, 200565, 200566, 200567, 200568, 200569, 200570, 200571, 200572, 200573, 200574, 200575, 200576, 200577, 200578, 200579, 200580, 200581, 200582, 200583, 200584, 200585, 200586, 200587, 200588, 200589, 200590, 200591, 200592, 200593, 200594, 200595, 200596, 200597, 200598, 200599, 200600, 200601, 200602, 200603, 200604, 200605, 200606, 200607, 200608, 200609, 200610, 200611, 200612, 200613, 200614, 200615, 200616, 200617, 200618, 200619, 200620, 200621, 200622, 200623, 200624, 200625, 200626, 200627, 200628, 200629, 200630, 200631, 200632, 200633, 200634, 200635, 200636, 200637, 200638, 200639, 200640, 200641, 200642, 200643, 200644, 200645, 200646, 200647, 200648, 200649, 200650, 200651, 200652, 200653, 200654, 200655, 200656, 200657, 200658, 200659, 200660, 200661, 200662, 200663, 200664, 200665, 200666, 200667, 200668, 200669, 200670, 200671, 200672, 200673, 200674, 200675, 200676, 200677, 200678, 200679, 200680, 200681, 200682, 200683, 200684, 200685, 200686, 200687, 200688, 200689, 200690, 200691, 200692, 200693, 200694, 200695, 200696, 200697, 200698, 200699, 200700, 200701, 200702, 200703, 200704, 200705, 200706, 200707, 200708, 200709, 200710, 200711, 200712, 200713, 200714, 200715, 200716, 200717, 200718, 200719, 200720, 200721, 200722, 200723, 200724, 200725, 200726, 200727, 200728, 200729, 200730, 200731, 200732, 200733, 200734, 200735, 200736, 200737, 200738, 200739, 200740, 200741, 200742, 200743, 200744, 200745, 200746, 200747, 200748, 200749, 200750, 200751, 200752, 200753, 200754, 200755, 200756, 200757, 200758, 200759, 200760, 200761, 200762, 200763, 200764, 200765, 200766, 200767, 200768, 200769, 200770, 200771, 200772, 200773, 200774, 200775, 200776, 200777, 200778, 200779, 200780, 200781, 200782, 200783, 200784, 200785, 200786, 200787, 200788, 200789, 200790, 200791, 200792, 200793, 200794, 200795, 200796, 200797, 200798, 200799, 200800, 200801, 200802, 200803, 200804, 200805, 200806, 200807, 200808, 200809, 200810, 200811, 200812, 200813, 200814, 200815, 200816, 200817, 200818, 200819, 200820, 200821, 200822, 200823, 200824, 200825, 200826, 200827, 200828, 200829, 200830, 200831, 200832, 200833, 200834, 200835, 200836, 200837, 200838, 200839, 200840, 200841, 200842, 200843, 200844, 200845, 200846, 200847, 200848, 200849, 200850, 200851, 200852, 200853, 200854, 200855, 200856, 200857, 200858, 200859, 200860, 200861, 200862, 200863, 200864, 200865, 200866, 200867, 200868, 200869, 200870, 200871, 200872, 200873, 200874, 200875, 200876, 200877, 200878, 200879, 200880, 200881, 200882, 200883, 200884, 200885, 200886, 200887, 200888, 200889, 200890, 200891, 200892, 200893, 200894, 200895, 200896, 200897, 200898, 200899, 200900, 200901, 200902, 200903, 200904, 200905, 200906, 200907, 200908, 200909, 200910, 200911, 200912, 200913, 200914, 200915, 200916, 200917, 200918, 200919, 200920, 200921, 200922, 200923, 200924, 200925, 200926, 200927, 200928, 200929, 200930, 200931, 200932, 200933, 200934, 200935, 200936, 200937, 200938, 200939, 200940, 200941, 200942, 200943, 200944, 200945, 200946, 200947, 200948, 200949, 200950, 200951, 200952, 200953, 200954, 200955, 200956, 200957, 200958, 200959, 200960, 200961, 200962, 200963, 200964, 200965, 200966, 200967, 200968, 200969, 200970, 200971, 200972, 200973, 200974, 200975, 200976, 200977, 200978, 200979, 200980, 200981, 200982, 200983, 200984, 200985, 200986, 200987, 200988, 200989, 200990, 200991, 200992, 200993, 200994, 200995, 200996, 200997, 200998, 200999, 201000, 201001, 201002, 201003, 201004, 201005, 201006, 201007, 201008, 201009, 201010, 201011, 201012, 201013, 201014, 201015, 201016, 201017, 201018, 201019, 201020, 201021, 201022, 201023, 201024, 201025, 201026, 201027, 201028, 201029, 201030, 201031, 201032, 201033, 201034, 201035, 201036, 201037, 201038, 201039, 201040, 201041, 201042, 201043, 201044, 201045, 201046, 201047, 201048, 201049, 201050, 201051, 201052, 201053, 201054, 201055, 201056, 201057, 201058, 201059, 201060, 201061, 201062, 201063, 201064, 201065, 201066, 201067, 201068, 201069, 201070, 201071, 201072, 201073, 201074, 201075, 201076, 201077, 201078, 201079, 201080, 201081, 201082, 201083, 201084, 201085, 201086, 201087, 201088, 201089, 201090, 201091, 201092, 201093, 201094, 201095, 201096, 201097, 201098, 201099, 201100, 201101, 201102, 201103, 201104, 201105, 201106, 201107, 201108, 201109, 201110, 201111, 201112, 201113, 201114, 201115, 201116, 201117, 201118, 201119, 201120, 201121, 201122, 201123, 201124, 201125, 201126, 201127, 201128, 201129, 201130, 201131, 201132, 201133, 201134, 201135, 201136, 201137, 201138, 201139, 201140, 201141, 201142, 201143, 201144, 201145, 201146, 201147, 201148, 201149, 201150, 201151, 201152, 201153, 201154, 201155, 201156, 201157, 201158, 201159, 201160, 201161, 201162, 201163, 201164, 201165, 201166, 201167, 201168, 201169, 201170, 201171, 201172, 201173, 201174, 201175, 201176, 201177, 201178, 201179, 201180, 201181, 201182, 201183, 201184, 201185, 201186, 201187, 201188, 201189, 201190, 201191, 201192, 201193, 201194, 201195, 201196, 201197, 201198, 201199, 201200, 201201, 201			