



Forest Service
U.S. DEPARTMENT OF AGRICULTURE

MANTI-LA SAL NATIONAL FOREST
Moab Ranger District

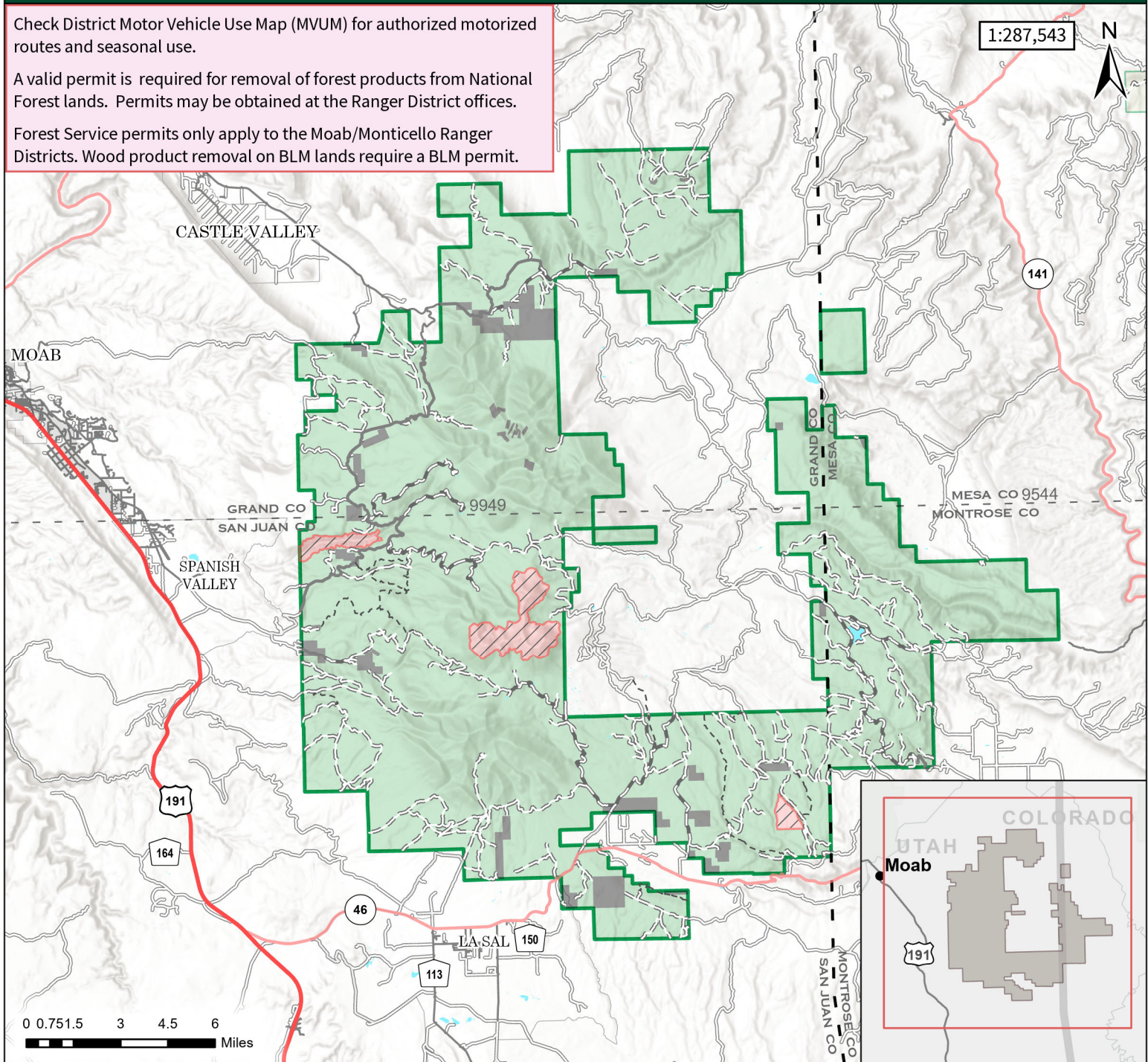
2025 Moab Fuelwood Cutting and Gathering Areas

Cutting Season: May 15 - December 31

Check District Motor Vehicle Use Map (MVUM) for authorized motorized routes and seasonal use.

A valid permit is required for removal of forest products from National Forest lands. Permits may be obtained at the Ranger District offices.

Forest Service permits only apply to the Moab/Monticello Ranger Districts. Wood product removal on BLM lands require a BLM permit.



Available to Fuelwood Harvest

Fuelwood Harvest Prohibited

Manti-La Sal National Forest Boundary

Private Land (Cutting Prohibited)

Major Roads

Primary Highway
Secondary Highway
Paved Road
Gravel Road

Forest Service Roads

Paved Road
Gravel Road
Dirt (Not Paved)
Road, Not Maintained for Passenger Car
Motorized Trails

FOREST OFFICES

Moab District Office (435) 259-7155
Monticello District Office (435) 587-2041
Supervisor's Office (435) 636-3500



This product is reproduced from information prepared by the USDA, Forest Service or from other suppliers. The Forest Service cannot assure the reliability or suitability of this information for a particular purpose. The data and product accuracy may vary due to compilation from various sources, including modeling and interpretation, and may not meet National Map Accuracy Standards. This information may be updated, corrected or otherwise modified without notification. For more information contact: Manti-La Sal National Forest Supervisors Office at 435-637-2817. USDA is an equal opportunity provider, employer, and lender.