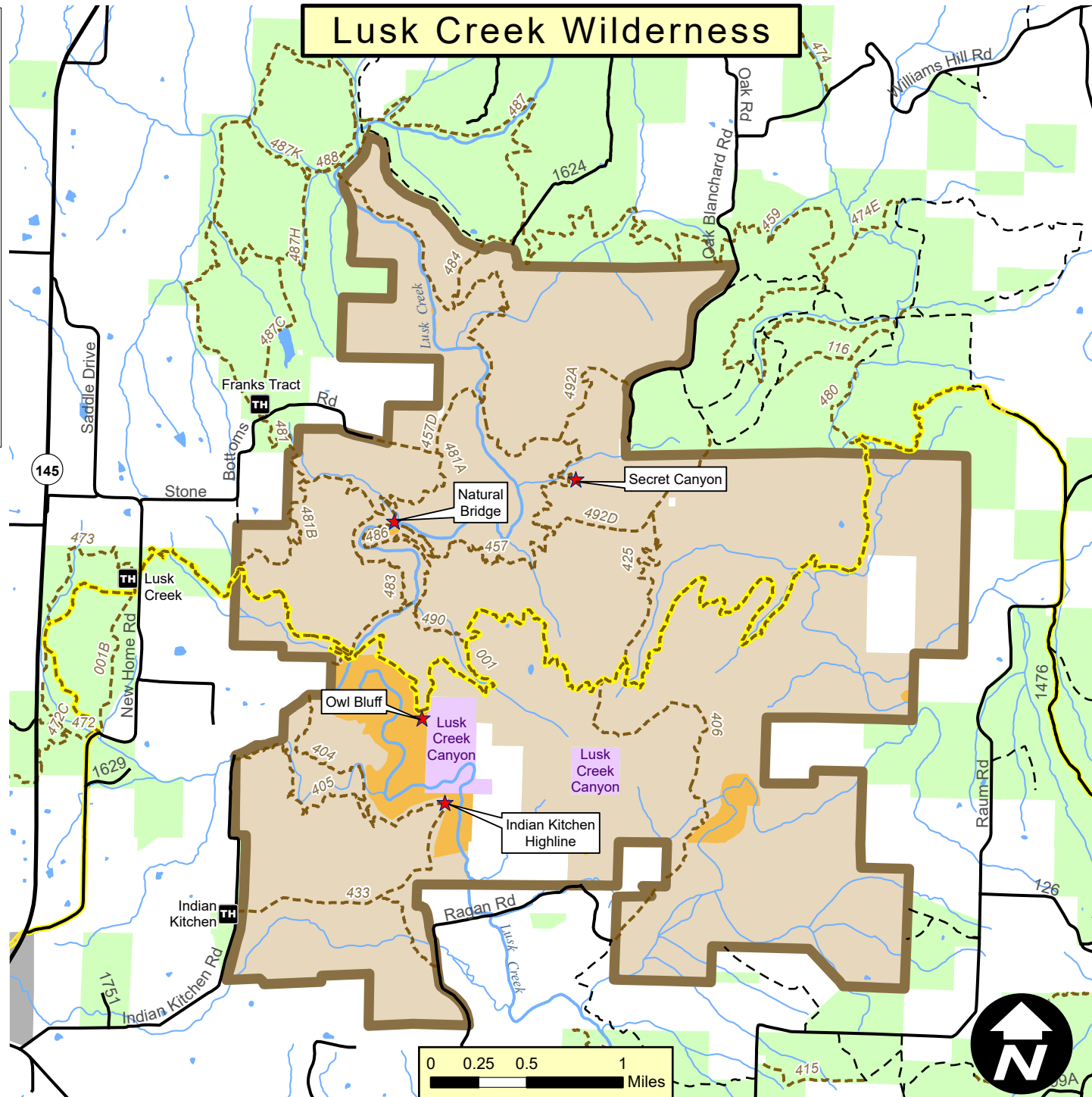


Legend

- ★ Points of Interest
- TH Trailhead and Parking
- Road
- - - Road (Closed to Motorized Use)
- - - 433 Hiker/Equestrian Forest Service Trail
- 001 River to River Trail
- Stream
- Waterbody
- Natural Area
- Wilderness Boundary
- National Forest Land
- Forest Boundary
- State Land



The Forest Service uses the most current and complete data available. GIS data and product accuracy may vary. They may be: developed from sources of differing accuracy, accurate only at certain scales, based on modeling or interpretation, incomplete while being created or revised, etc. Using GIS products for purposes other than those for which they were created, may yield inaccurate or misleading results. The Forest Service reserves the right to correct, update, modify, or replace GIS products without notification. The Forest Service will not be liable for any activity involving this information. USDA is an equal opportunity provider, employer, and lender.