

# DIXIE NATIONAL FOREST JUNIOR RANGER



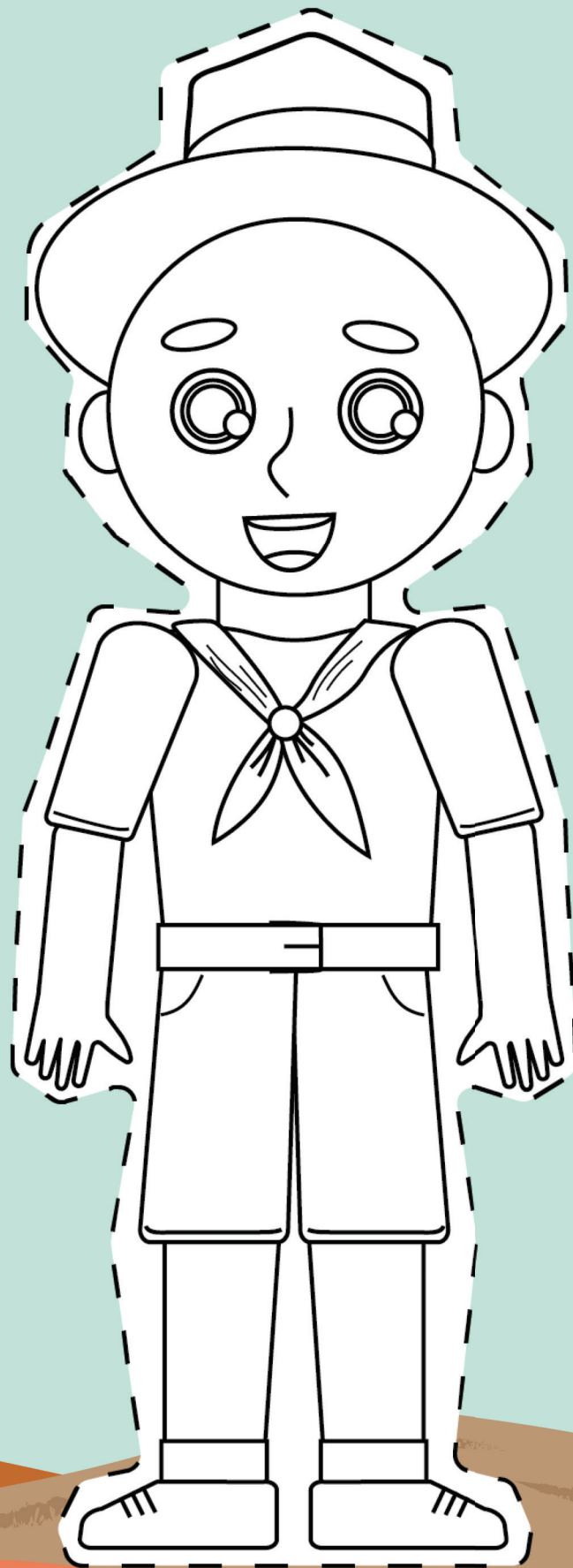
# CREATE YOUR OWN RANGER

Anyone can be a ranger! There are a variety of jobs in the Forest Service that require many different skills and abilities. The most important job a ranger does is protect the forest and share information on how you can too.

Color and name your ranger and take it with you on all your adventures! Be sure and share the information you learn with your friends and family, while becoming a junior ranger.

Circle some careers you are interested in!

- Recreation
- Wildlife Biology
- Administration
- Forestry
- Education
- Law Enforcement
- Firefighting
- Botany
- Engineering
- Archeology
- Public Affairs
- Hydrology



# Visitor Center Contact Info

Escalante Interagency Visitor Center  
755 W Main St, Escalante, UT 84726

Dixie National Forest Supervisor's Office  
820 N Main Street, Cedar City, UT 84721  
(435) 865-3700

Pine Valley Heritage Center  
132 E Main St, Pine Valley, UT 84781

Duck Creek Visitor Center  
Forest Rd 263, Duck Creek Village, UT 84762

Red Canyon Visitor Center  
5375 UT-12, Panguitch, UT 84759



Learn more about the  
Dixie National Forest!

## HIDDEN GEMS

Make sure to check out these Top 10 places on the Dixie! Have fun exploring with your family!

Childrens Forest at the Kiln: Educational trail with unique plants, animals, and history!

Pine Valley Recreation Area: Breathtaking reservoir with great spots for camping!

Yant Flat: Explore the swirling candy cliffs hiking on colorful slickrock!

Twisted Forest: Great hike through nature's oldest living trees, the Bristlecone Pine!

Cascade Falls: Stunning waterfall hike with spectacular view of Zion National Park!

Navajo Lake: Scenic lake that is great for fishing, biking, and kayaking!

Mammoth Cave: One of the largest lava tubes in Utah to explore!

Brian Head Peak: Excellent views and the tallest peak in Iron County!

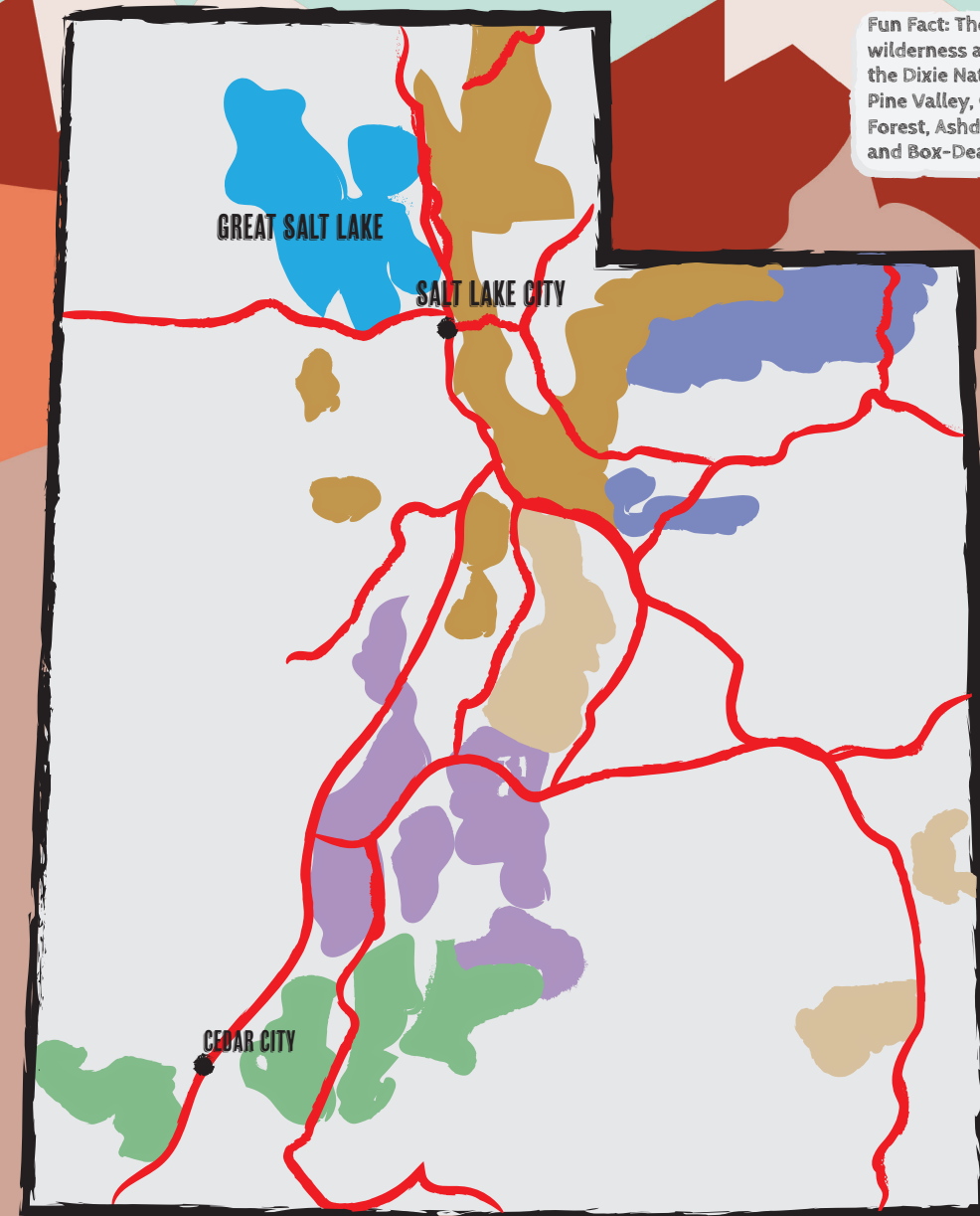
Red Canyon: Beautiful red rock canyon with hoodoos and hiking trails!

Powell Point: Majestic viewpoint on top of white and orange rock!

## DIXIE FOREST MAP

The Dixie National Forest, with headquarters in Cedar City, Utah, occupies almost two million acres and stretches for about 170 miles across southern Utah. This forest straddles the divide between the Great Basin desert to the west and the Colorado River to the east. Elevations range from 2,800 ft near St. George to over 11,322 ft. on Boulder Mountain. The Dixie National Forest is so large that it is split up into four Ranger Districts: Pine Valley, Cedar City, Powell, and Escalante. With so much public land, many adventures await!

Can you find and circle Dixie National Forest on this map?



Fun Fact: There are four wilderness areas within the Dixie National Forest: Pine Valley, Cottonwood Forest, Ashdown Gorge, and Box-Death Hollow.



# SMOKEY BEAR

Smokey says: Only YOU can prevent wildfires!

Smokey Bear is based on a real story. In the early 1950s, there was a wildfire that was burning up a forest in New Mexico. Wildland firefighters were working hard to contain the fire and put it out. A small black bear was found at the top of a tree, scared and hurt. The firefighters helped him down and took him to a facility that could take care of him. Smokey Bear became a symbol for the Forest Service to help educate the public on the dangers of wildfires.



# ANCESTRAL HOMELANDS

The Southern Paiutes consider this area of the National Forest part of their ancestral homelands. Southern Paiutes, traditionally referred to as the NungWu, have lived upon this land for generations. They believe that they were placed on this landscape to be stewards of the land and to always care for all of the resources. Plants, animals and traditional springs would have been tended to by the ancestors of the Southern Paiute and still are tended today by their descendants. Southern Paiute ancestors also left behind beautiful rock writings that tell stories about their connection to these areas.

Imagine you can only use shapes and symbols to communicate with others. What kind of artwork would you create? Draw them on the "paper cliffs" below to tell your story!

Remember! It is not okay to vandalize, scratch, paint, or write on rocks, trees or other objects in nature. Put your artwork on paper instead!



# MATCH THE TRACKS!

Animals are everywhere, but we don't always see them. Rangers look for clues left by animals to see if they are close by. These clues are called tracks. Look below at the animal tracks and see what animal might have left them behind.

Draw a line to connect the tracks to the animal who made them.

Fun Fact: Animals can leave other traces behind like their fur, antler and skin sheds, scents, and scat!



Rattlesnake



Beaver



Turkey



Deer



# WORD SCRAMBLE

Get those eyes looking! Find the 18 words below that relate to the Dixie National Forest.

The name "Dixie" was given to the forest in 1903 due to its warm climate in the southwest part of the state.



C E J R M O U N T A I N P B O  
 W A N V P Y C Q T H I K I N G  
 B G M A Z I X K W Z V F S H B  
 R L D P V K N N Z M L I H V F  
 I E H R I A U E U M S R G F A  
 S R D Z E N J L V D C E R A S  
 T J A N G D G O Y A X G A L P  
 L B R B S A C O L T L W N C E  
 E T Y T B P H A B A R L G O N  
 C W M K V I R Q N V K S E N Q  
 O E Q I E I T U N Y N E R Y L  
 N L K U B H I W C H O Z G Y V  
 E K A N T E L O P E C N T G J  
 U C O T T O N W O O D Z F P R  
 D E E R H P L O F T K U G B Q

- Navajo Lake
- Bristlecone
- Eagle
- Antelope
- Cottonwood
- Rabbit
- Fir
- Hiking
- Ranger
- Spruce
- Red Canyon
- Falcon
- Pine Valley
- Camping
- Deer
- Elk
- Mountain
- Aspen

# WOULD YOU RATHER?

The Ten Essentials is a list of important items that you should always bring with you when you go outside to explore and recreate. These items will come in handy for enjoying the outdoors and can help in case of an emergency.

Circle the items that you think you should bring with you on an adventure.

Remember! Staying safe is your #1 priority when exploring in any forest.



 Water Bottle	OR	 Soda	OR	 Flashlight	OR	 Music Speaker
 Candy	OR	 Compass	OR	 Gaming Console	OR	 Snack
 Soccer ball	OR	 Map	OR	 Pocket Knife	OR	 Balloon
 First Aid Kit	OR	 TV	OR	 Lighter	OR	 Tiara
 Rubber Duck	OR	 Sunscreen	OR	 Cat	OR	 Jacket

# BRINGING THE HEAT!

Wildfires are becoming more frequent and severe because of two changes in the past two hundred years. Wildfire suppression has left forests crowded and full of dry dead trees, branches, and leaves. Also, climate change has created hotter and drier conditions that make it easier for fires to start and harder for firefighters to control them.

Did you know? The Brian Head fire burned 71,000 acres in 2017! Always be careful with fire.



In some forests, dry leaves and twigs pile up on the ground. When it's hot, these can catch fire easily, spreading quickly and causing wildfires.

In unhealthy forests, firefighters start safe fires called prescribed burns. These fires clean up dead plants and help new plants grow. It's like giving the forest a health check-up!

After a fire, new plants start growing, animals come back and the forest gets greener. It's like nature's restart button, bringing life back to the woods.

# TREE-MENDOUS!

Fun Fact: Ponderosa pine cones are the largest cones in the Rocky Mountains!



Forests are home to many different types of trees and shrubs. These are extremely important to our ecosystem as they provide many "ingredients" we as humans need to survive. Everything from the air you breathe to water you drink is thanks to big healthy trees!

Can you find and identify these trees on your trip? Check the box when you find these trees. Can you say the name in English and in Southern Paiute?

## Quaking Aspen



suhngu'veuv

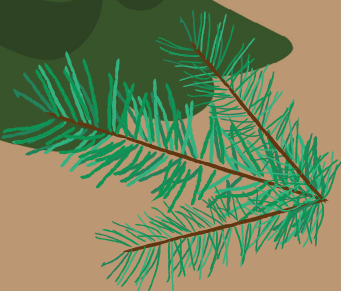
- Round or somewhat heart shaped with finely sawtoothed edges
- Smooth white bark with dark scars from where branches used to be

I saw one!

- Scaly plates with rusty orange bark. Take a sniff, they smell like vanilla or butterscotch!
- Needles in bunches of three and are flat.
- They are 5 to 10 inches long
- Cones are 3 to 6 inches long, woody (tough) with rigid prickles. These are the largest cones in the Rocky Mountains!

I saw one!

## Douglas Fir



sumu' oahomp

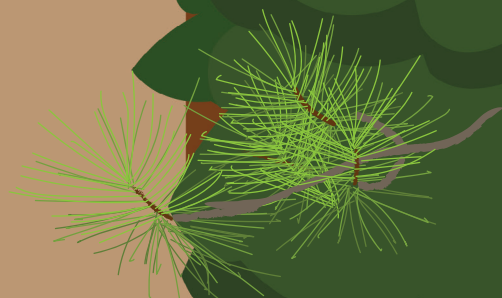
- Fir needles are friendly and flat, with round tips.
- Cones are firm and "face-up" to the sky with a three-pointed bract.
- Bark is smooth and light grey, getting darker and bumpier as they age.

I saw one!

- Spruce needles have sharp tips that roll between your fingers.
- Cones feel soft, papery and sag down.
- Bark is brownish grey, rough and scaly,

I saw one!

## Ponderosa Pine



yooveemp'

## Englemann Spruce



spruce, munu oahomp

# FUN IN THE SUN!

Most people visit the Dixie National Forest for enjoyable activities, known as recreation. With so many fun activities to try in all four seasons, it's no wonder that everyone wants to go outside and play!

What types of recreational activities have you done? What activities do you want to try? Put an X on the ones you've tried and circle the ones you want to do!



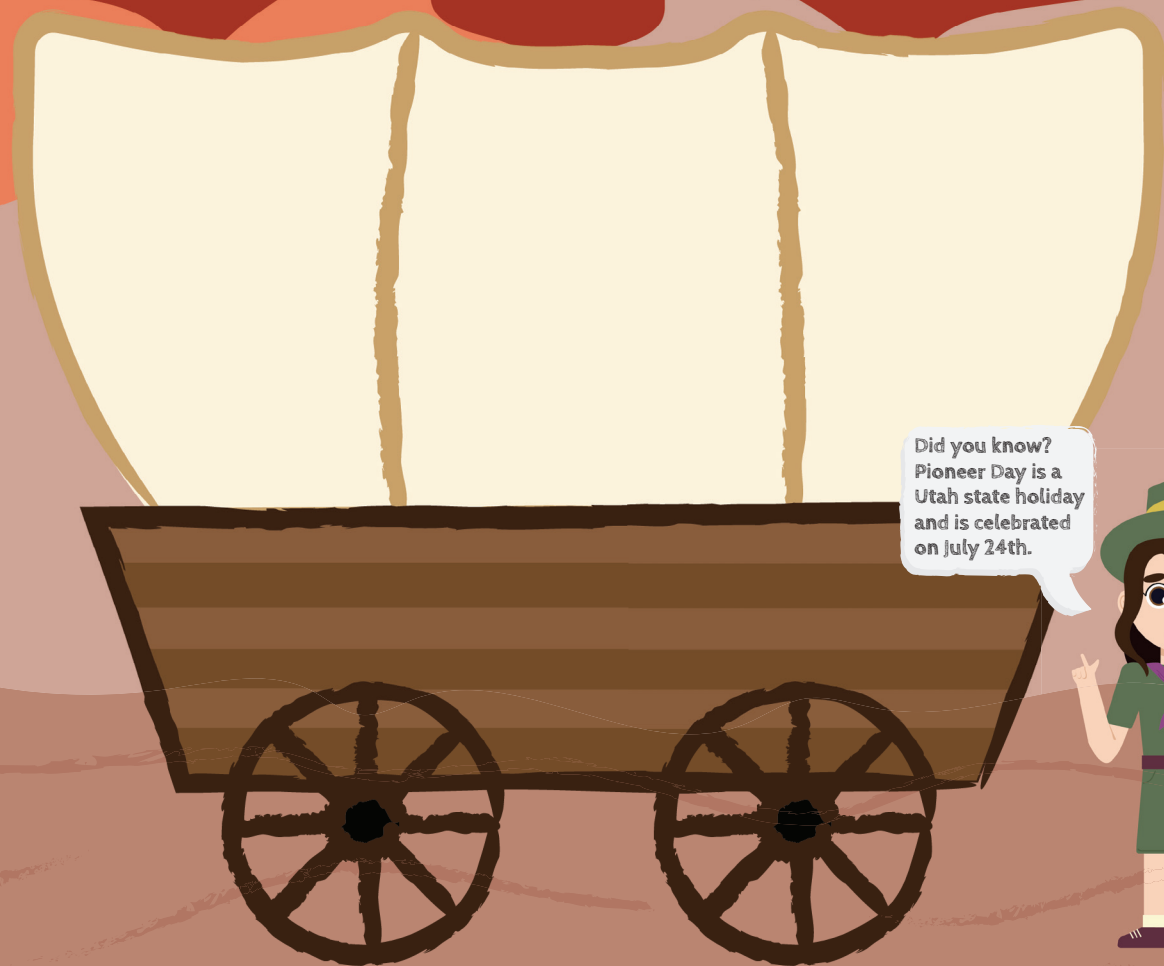
Did you know? Bryce Canyon and Cedar Breaks were once part of the Dixie.



# PIONEER HERITAGE

In 1851 Brigham Young sent settlers to southern Utah to grow cotton in the warmer climate. Families packed up their belongings and headed south with handcarts and wagons. They scattered across the southern half of the state and soon called places throughout the Dixie National Forest "home".

What types of supplies would you take on a long journey with your family? Draw what you'd bring in the wagon below!



Did you know?  
Pioneer Day is a Utah state holiday and is celebrated on July 24th.

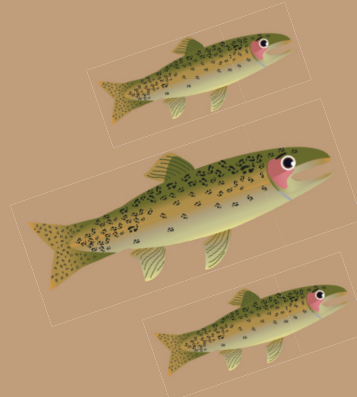


# GO WITH THE FLOW!

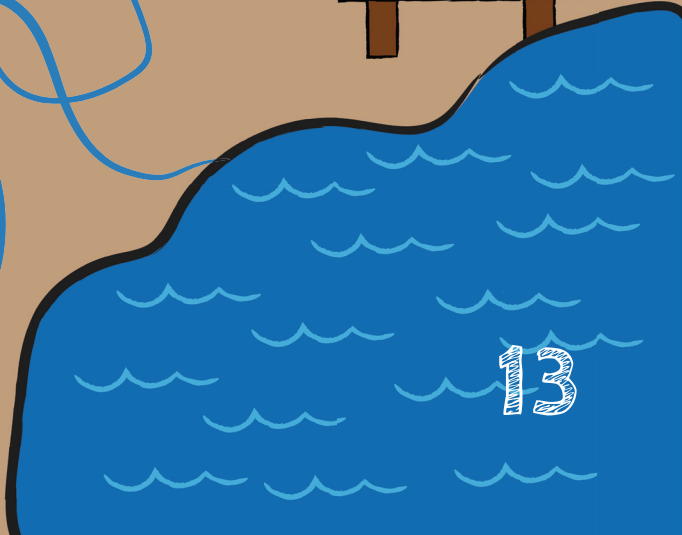
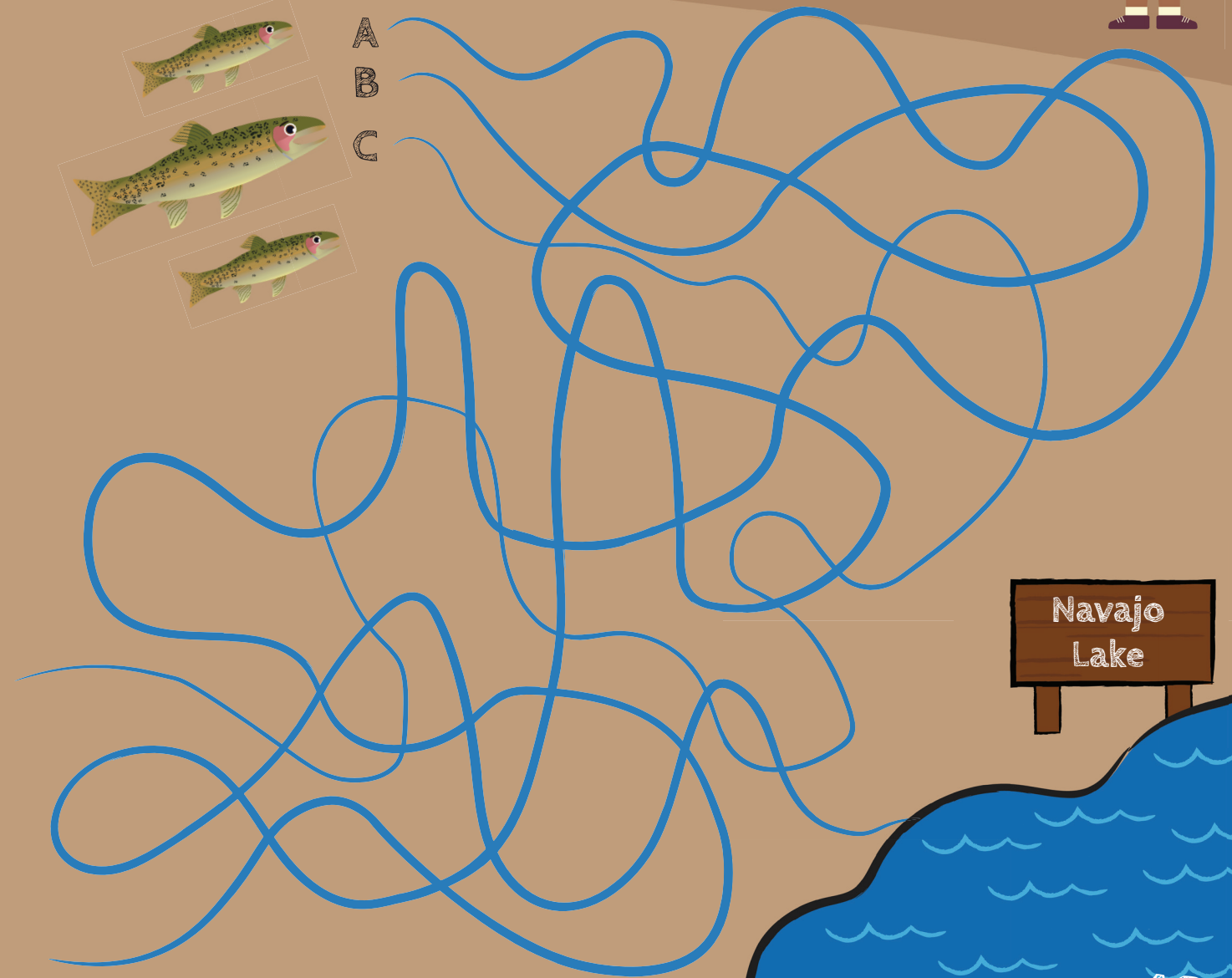
Help these native trout get around! Bonneville Cutthroat Trout inhabited an old lake that covered much of western Utah back in the Ice Age, 30,000 to 13,000 years ago. The lake evaporated from a warming climate, and the trout were thought to be extinct. In the 1970s, isolated populations of Bonneville Cutthroat Trout were found! Conservation efforts were created and these protected fish are flourishing around the state.

Choose the stream that leads the Bonneville Cutthroat Trout to the lake! Circle the letter of the correct stream.

Fun Fact: Bonneville Cutthroat Trout are Utah's state fish!



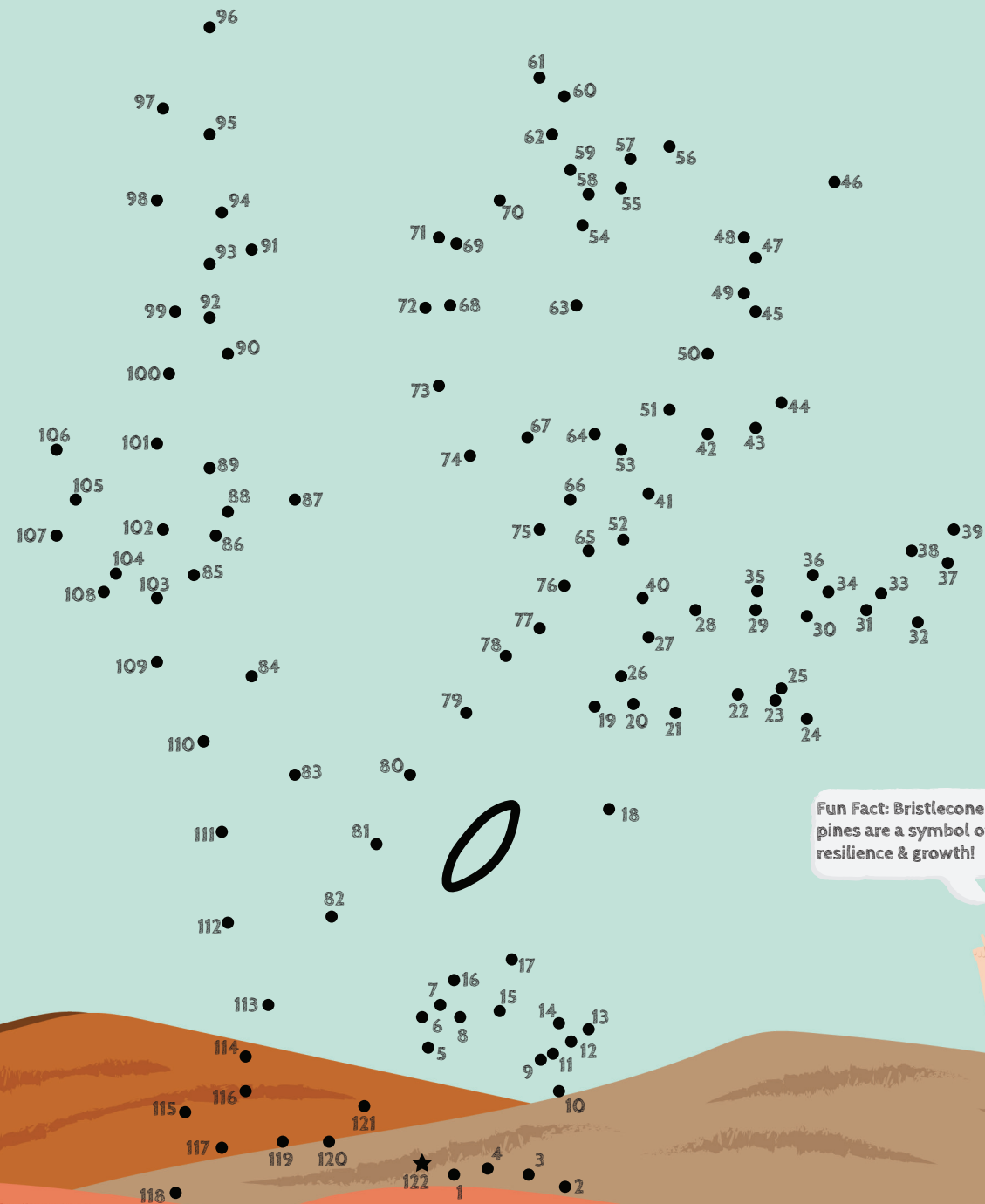
A  
B  
C



# BRISTLECONE PINE

Bristlecone pines might look dead, but they are alive! They grow in some of the harshest conditions like the edge of cliffs. These trees can live up to 5,000 years!

Start at dot number 1 and connect the dots to reveal what a bristlecone pine looks like!



Fun Fact: Bristlecone pines are a symbol of resilience & growth!



# SCAVENGER HUNT

One of the most important things rangers and scientists do is observe the world around them. They usually write down their observations in a journal or notebook. Take a few minutes to sit somewhere quiet... What do you hear? What can you see?

Fill in the blanks below with your observations. Do you think they can help scientists? Why?

## NAME 3 THINGS YOU CAN SMELL!

1. \_\_\_\_\_
2. \_\_\_\_\_
3. \_\_\_\_\_

## NAME 3 THINGS YOU CAN HEAR!

1. \_\_\_\_\_
2. \_\_\_\_\_
3. \_\_\_\_\_

## NAME 3 THINGS YOU CAN TOUCH!

1. \_\_\_\_\_
2. \_\_\_\_\_
3. \_\_\_\_\_

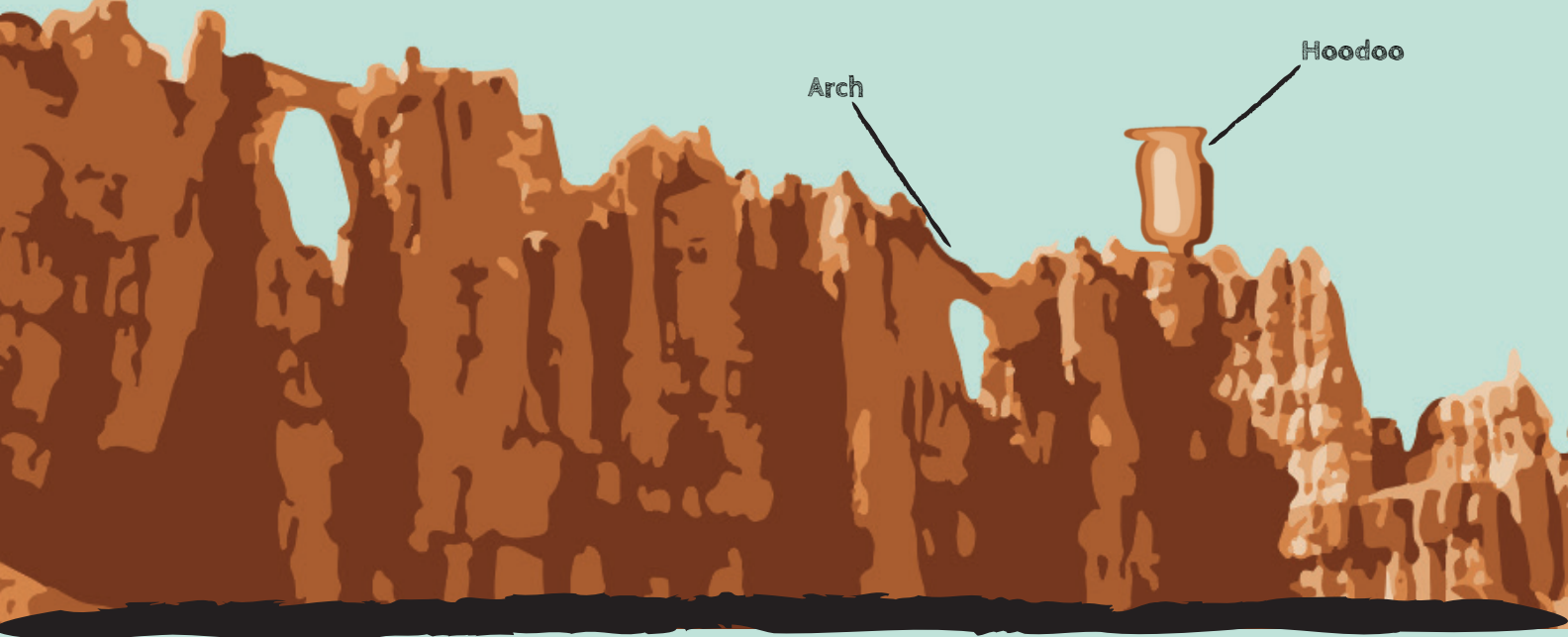
Fun Fact: Spending just 10 minutes outside each day can improve your mood and ability to focus!



# GEOLOGY ROCKS!

The Dixie National Forest is known for having bright orange-red rocks. These rocks are part of a rock layer called the Claron Formation. The unique color comes from the mineral iron. Weathering (breaking down the rock) and erosion (moving the broken pieces) help create remarkable features in the rock such as hoodoos and arches. This process has been happening for millions of years and is still happening today!

Can you spot an arch or hoodoo outside? Point them out to your family!



The Markagunt Plateau is a volcanic field located on the Dixie, mainly on Cedar Mountain. These volcanic fields were created by old cinder cone volcanoes which erupted millions of years ago and created the lava flows and lava tubes you see around you. Don't worry though, they are dormant volcanoes now!

Can you see any lava flows around you? Look for the huge fields of black rock!



# WHICH ANIMAL ARE YOU?

Like people, animals have different personalities and interests. Which animal is your personality most like? Start with the first question on the top left, answer each question by following the arrows to finish at the animal who best fits your personality at the bottom.



**You're a trout!**

You are chill! You like to go with the flow and hang out with those around you. You like colder weather and catching some waves.

**You're a beaver!**

You are creative! You like your room to be full with all of your favorite things. You like playing around with friends and new ideas.

**You're a hawk!**

You are solitary! You like hanging out with a good book in a nice place. You are quick on your feet, and speedy to a solution.

# LEAVE NO TRACE

Leave No Trace principles help visitors and land managers keep public lands clean and healthy. By remembering these seven principles, you can help protect the forest and stay safe while exploring. Practice these hand motions and teach them to your family and friends to help you remember the seven LNT principles!

Remember: Always try to leave the forest like you were never there!



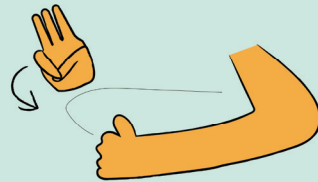
## PLAN AHEAD & PREPARE

Research where you are going, what the weather will be like, and what gear you will need to bring with you.



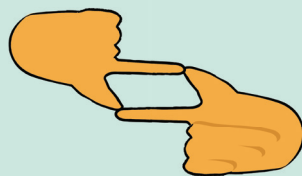
## TRAVEL & CAMP ON DURABLE SURFACES

Only hike on trails, dirt, sand, or rocks. Avoid walking or placing tents on plants and stay in designated areas.



## TRASH YOUR TRASH

Properly dispose of all waste, including food scraps. Anything you bring into the forest, should come out with you.



## LEAVE WHAT YOU FIND

Please don't collect rocks, wildflowers, artifacts or carve your name into rocks and trees. Be sure to only take pictures!



## MINIMIZE CAMPFIRE IMPACTS

Use established fire rings. Don't make the fire bigger than it needs to be. Be sure your fire is completely out.



## RESPECT WILDLIFE

Wildlife can be very dangerous, so only observe them from a distance, and be sure to never feed them.



## BE CONSIDERATE TO OTHER VISITORS

Make sure you are being polite to everyone on the forest. Follow the rules, show respect, and have fun!

# DIXIE NATIONAL FOREST



# RANGER

# JUNIOR

## CERTIFICATE OF ACHIEVEMENT

As a Junior Ranger, I, \_\_\_\_\_ (name),  
I promise to use my knowledge to preserve and protect the Dixie  
National Forest's wildlife, history and natural features. When I return  
home, I will teach others how to protect the natural world.

My Signature

Ranger's Signature

Age

Date