

United States Department of Agriculture
Forest Service

COLORADO
APRIL 2025

America's Great Outdoors

Motor Vehicle
Travel Map
Pike
National Forest
Pikes Peak
Ranger District

PURPOSE AND CONTENTS
OF THIS MAP

The designations shown on this motor vehicle travel map (MVTM) were made by the responsible official pursuant to 36 CFR 212.51, are effective as of the date on the front cover of this MVTM, and will remain in effect until superseded by the next year's MVTM.

It is the responsibility of the user to acquire the current travel information. This MVTM is not the official Motor Vehicle Use Map (MVUM), yet it shows the National Forest System roads, National Forest System trails, and the areas on National Forest System lands in the Pikes Peak Ranger District that are designated for motor vehicle use pursuant to 36 CFR 212.51. This MVTM also identifies the vehicle classes allowed on each route and in each area, and any seasonal restrictions that apply on those routes and in those areas. In addition to showing everything that is on the MVUM, this MVTM also shows BLM lands and State lands outside the forest boundary, plus other information to help navigate on the forest.

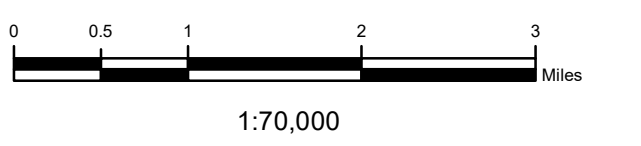
Designation of a road, trail, or area for motor vehicle use by a particular class of vehicle under 36 CFR 212.51 should not be interpreted as encouraging or inviting use or implying that the road, trail, or area is passable, actively maintained, or safe for travel. Motor vehicle designations include parking along designated routes and at facilities associated with designated routes when it is safe to do so and when not causing damage to National Forest System resources. Seasonal weather conditions and natural events may close designated roads and trails impassable for extended periods. Designated areas may contain dangerous or impassable terrain. Many designated roads and trails may be passable only by high-clearance vehicles or four-wheel-drive vehicles. Maintenance of designated roads and trails will depend on available resources, and many may receive little maintenance.

This motor vehicle travel map identifies those roads, trails, and areas designated for motor vehicle use under 36 CFR 212.51 for the purpose of enforcing the prohibition at 36 CFR 261.13. This is a limited purpose. The other public roads are shown for information and navigation purposes only and are not subject to designation under the Forest Service travel management regulation.

These designations apply only to National Forest System roads, National Forest System trails, and areas on National Forest System lands.

LEGEND

- Roads Open to Highway Legal Vehicles
- Roads Open to All Vehicles
- Trails Open to All Vehicles
- Trails Open to Vehicles 50' or Less in Width
- Trails Open to Vehicles > 62"
- Trails Open to Motorcycles Only
- Special Vehicle Designation (See Blanket Statements)
- Seasonal Designation (See Explanation of Legend Items)
- Interstate Highways, US, State, County & Other Public Roads
- Interstate Route Symbol
- U.S. Highway Route Symbol
- State Highway Route Symbol
- County Road Number
- Other Public Trails
- Major Streams
- Mountain Peaks
- FS Campgrounds
- FS Picnic Areas
- FS Motorized Trailheads
- Cities, Towns
- Forest or Unit Boundary
- National Forest System Lands
- Non-National Forest System Lands within the National Forest
- BLM Lands
- State Lands
- State Wildlife Areas
- County Boundary
- Township and Range Lines
- Section Lines
- Lakes and Rivers



USDA is an equal opportunity provider, employer, and lender.

OPERATOR RESPONSIBILITIES

Operating a motor vehicle on National Forest System roads, National Forest System trails, and in areas on National Forest System lands carries a greater responsibility than operating that vehicle in a city or other developed setting. Not only must you know and follow all applicable traffic laws, you need to show concern for the environment as well as other forest users. The misuse of motor vehicles can lead to the temporary or permanent closure of any designated road, trail, or area. As a motor vehicle operator, you are also subject to State traffic law, including State requirements for licensing, registration, and operation of the vehicle in question.

Motor vehicle use, especially off-highway vehicle use, involves inherent risks that may cause property damage, serious injury, and possibly death to participants. Drive cautiously and anticipate rough surfaces and features, such as snow, mud, vegetation, and water crossings common to remote driving conditions. By your participation, you voluntarily assume full responsibility for these damages, risks, and dangers. Take care at all times to protect yourself and those under your responsibility.

Much of the Pikes Peak Ranger District is remote. Medical assistance may not be readily available. Cellular telephones do not work in many areas of the Pikes Peak Ranger District. Take adequate food, water, first-aid supplies, and other equipment appropriate for the conditions and expected weather.

ALWAYS REMEMBER TO RESPECT PRIVATE LAND! PROTECT YOUR PRIVILEGE. STAY ON DESIGNATED ROADS AND TRAILS AND IN DESIGNATED AREAS.

Read and understand this map in its entirety. If you have questions, please contact the Pikes Peak Ranger District for clarification.

As a motor vehicle operator on a National Forest System road, trail, or area you must comply with this map, as well as all Federal, State, and local laws and regulations. Compliance with these rules is your responsibility.

EXPLANATION OF LEGEND ITEMS

Roads Open to Highway Legal Vehicles Only:

These roads are open only to motor vehicles licensed under State law for general operation on all public roads within the state.

Roads Open to All Vehicles:

These roads are open to all motor vehicles, including smaller off-highway vehicles that may not be licensed for highway use (but not to oversize or overweight vehicles under State traffic law).

Trails Open to Vehicles 50 inches or Less in Width:

These trails are open only to motor vehicles less than 50 inches in width at the widest point on the vehicle.

Trails Open to Motorcycles Only:

These trails are open only to motorcycles. Sidecars are not permitted.

Special Vehicle Designation:

This symbol indicates the road or trail is open to classes of vehicles other than those listed above. Refer to the Blanket Statements for Travel Management for further instructions.

Seasonal Designation:

This symbol, used in conjunction with one of the other road or trail symbols, indicates that the road or trail is open only during certain portions of the year. Refer to Seasonal Designations table for further information.

Other Public Roads and Trails:

Interstate Highways, U.S., State, County & Other Public Roads

Other Public Trails

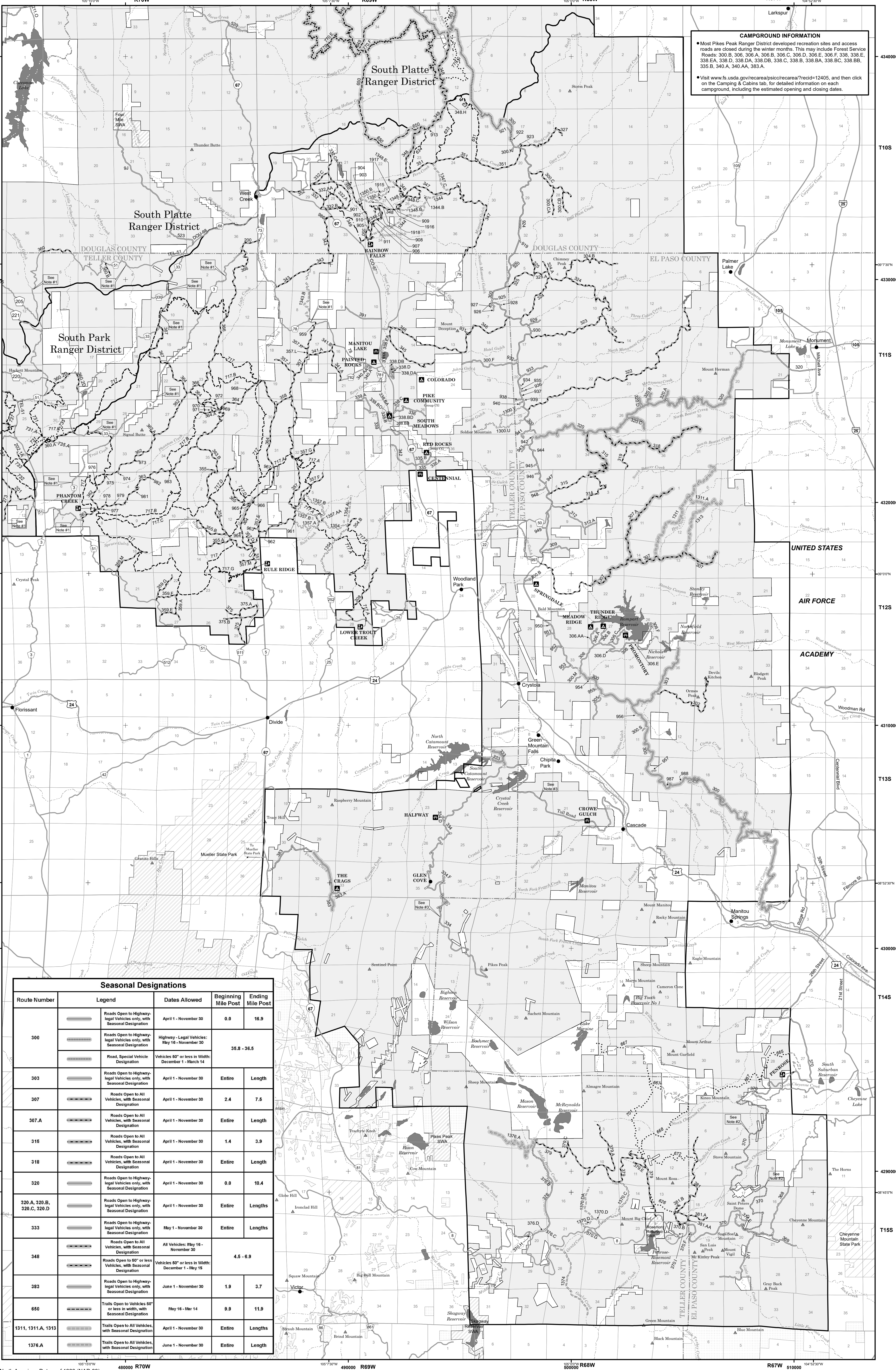
These symbols are used to show routes the Forest Service does not have jurisdiction over and has not designated for motorized use. These symbols are part of the reference layers showing connections to towns and cities outside the forest boundary.

Motorized Trail Access:

This symbol indicates a trailhead for access to a motorized route. Not all motorized routes have trailheads and those that do may range from primitive to developed.

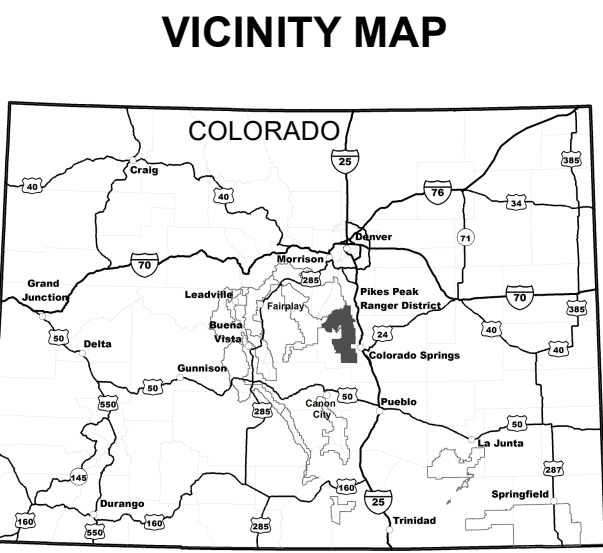


FS-873-0212



CAMPGROUND INFORMATION

- Most Pikes Peak Ranger District developed recreation sites and access roads are closed during the winter months. This may include Forest Service Roads: 300 B, 306, 306 A, 306 B, 306 C, 306 D, 306 E, 306 F, 338 B, 338 E, 338 EA, 338 D, 338 DA, 338 DB, 338 C, 338 B, 338 BA, 338 BC, 338 BB, 338 B, 340 A, 340 A, 340 A.
- Visit www.fs.usda.gov/tecareas/picocareas/read12405, and then click on the Camping & Cabins tab, for detailed information on each campground, including the estimated opening and closing dates.



INFORMATION SOURCES

Pikes Peak Ranger District
601 South Weber Street
Colorado Springs, CO 80903
(719) 636-1602

www.fs.usda.gov/goto/psic/pikespeak

Forest Supervisor
Pike and San Isabel National Forests
Cimarron and Comanche National Grasslands
2840 Kachina Drive
Pueblo, CO 81008
(719) 553-1400
In case of Emergency: Dial 911



PROHIBITIONS

It is prohibited to possess or operate a motor vehicle on National Forest System lands on the Pikes Peak Ranger District other than in accordance with these designations (36 CFR 261.13).

Violators of 36 CFR 261.13 are subject to a fine of up to \$5,000, imprisonment for up to 6 months, or both (18 U.S.C. 3571(e)). This prohibition applies regardless of the presence or absence of signs.

This map does not display nonmotorized uses, over-snow vehicle uses, or other facilities and attractions on the Pikes Peak Ranger District. Obtain forest visitor information from the local national forest office.

Designated roads, trails, and areas may also be subject to temporary, emergency closures. As a visitor, you must comply with signs notifying you of such restrictions. A national forest may issue an order to close a road, trail or area on a temporary basis to protect the life, health, or safety of forest visitors or the natural or cultural resources in these areas. Such temporary and/or emergency closures are consistent with the Travel Management Rule (36 CFR 212.52 (b), 36 CFR 261 subpart B). The designation "road or trail open to all motor vehicles" does not supersede State traffic law.

PIKES PEAK RANGER DISTRICT
BLANKET STATEMENTS FOR TRAVEL MANAGEMENT

MAP REVISIONS

The designations shown on this map will remain in effect until revised with the publication of a new map. In January of each year, this motor vehicle travel map will either be revised with the publication of a new map, or it will be validated for the new year by the Ranger District with a red stamp that shows: "Valid for Year 20__".

PARKING/DISPersed CAMPING
ON THE PIKE NATIONAL FOREST:

- Where designated parking areas are not available, and where not specifically prohibited, unsafe, or causing resource damage, parking on National Forest System lands within one vehicle length off of designated routes is authorized.
- Dispersed camping is authorized on National Forest System lands except in specially designated areas that are closed to dispersed camping.
- Motorized dispersed camping is authorized within one vehicle length off of designated National Forest System routes, where not specifically prohibited, unsafe, or causing resource damage.
- Check with the local National Forest District office for current information on areas closed to camping and for other travel management information.

MVTM DISCLAIMER

Disclaimer: GIS data and product accuracy may vary. The Forest Service reserves the right to correct, update, modify, or replace GIS products without notification. For more information, contact the Pike and San Isabel NF, Cimarron & Comanche NG, Pueblo, CO. (719) 553-1400.

NOTE #1

Teller County Ordinance No.19 and Resolution No.05-27-2004 allow for the operation of unlicensed OHVs on designated county roads. See www.co.teller.co.us for additional information.

NOTE #2

National Forest System Road 370 (from MP 5.66 to MP 14.20) is marked with a special vehicle designation and is open only to vehicles 50 inches or less in width.

NOTE #3

National Forest System Road 334 (from MP 0.0 - MP 18.86), and otherwise known as the Pikes Peak Highway, could be closed at any given time of the year, due to environmental conditions, public safety concerns, road maintenance, or permitted special events. However, this toll road is typically open year - round, weather permitting. Please call (719) 385-7325 for further information and conditions.

Seasonal Designations					
Route Number	Legend		Dates Allowed	Beginning Mile Post	Ending Mile Post
300		Roads Open to Highway-legal Vehicles only, with Seasonal Designation	April 1 - November 30	0.0	16.9
		Roads Open to Highway-legal Vehicles only, with Seasonal Designation	Highway - Legal Vehicles: May 16 - November 30	35.8 - 36.5	
		Road, Special Vehicle Designation	Vehicles 50" or less in Width: December 1 - March 14		
303		Roads Open to Highway-legal Vehicles only, with Seasonal Designation	April 1 - November 30	Entire	Length
307		Roads Open to All Vehicles, with Seasonal Designation	April 1 - November 30	2.4	7.5
307.A		Roads Open to All Vehicles, with Seasonal Designation	April 1 - November 30	Entire	Length
315		Roads Open to All Vehicles, with Seasonal Designation	April 1 - November 30	1.4	3.9
318		Roads Open to All Vehicles, with Seasonal Designation	April 1 - November 30	Entire	Length
320		Roads Open to Highway-legal Vehicles only, with Seasonal Designation	April 1 - November 30	0.0	10.4
320.A, 320.B, 320.C, 320.D		Roads Open to Highway-legal Vehicles only, with Seasonal Designation	April 1 - November 30	Entire	Lengths
333		Roads Open to Highway-legal Vehicles only, with Seasonal Designation	May 1 - November 30	Entire	Lengths
348		Roads Open to All Vehicles, with Seasonal Designation	All Vehicles: May 16 - November 30	4.5 - 6.9	
		Roads Open to 50" or less Vehicles, with Seasonal Designation	Vehicles 50" or less in Width: December 1 - May 15		
383		Roads Open to Highway-legal Vehicles only, with Seasonal Designation	June 1 - November 30	1.9	3.7
650		Trails Open to Vehicles 50" or less in width, with Seasonal Designation	May 16 - Mar 14	9.9	11.9
1311, 1311.A, 1313		Trails Open to All Vehicles, with Seasonal Designation	April 1 - November 30	Entire	Lengths
1376.A		Trails Open to All Vehicles, with Seasonal Designation	June 1 - November 30	Entire	Length