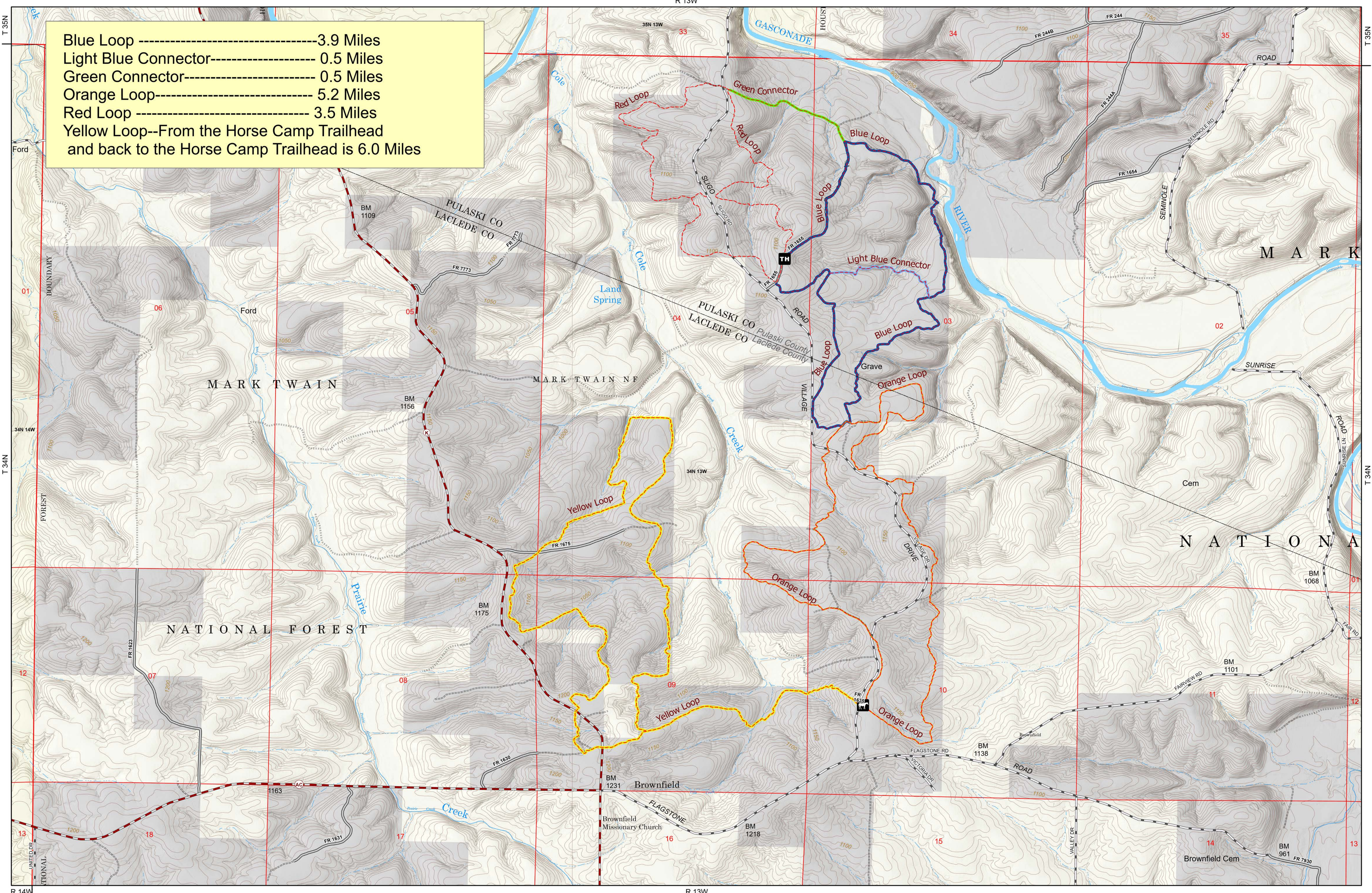




Cole Creek Trails

Mark Twain National Forest
Houston Ranger District

- Blue Loop ----- 3.9 Miles
- Light Blue Connector----- 0.5 Miles
- Green Connector----- 0.5 Miles
- Orange Loop----- 5.2 Miles
- Red Loop ----- 3.5 Miles
- Yellow Loop--From the Horse Camp Trailhead and back to the Horse Camp Trailhead is 6.0 Miles



Disclaimer

-This map is intended to depict physical features as they generally appear on the ground and may not be used to determine title, ownership, legal boundaries, legal jurisdiction, including jurisdiction over roads or trails, or access restrictions that may be in place on either public or private land.

-Obtain permission before entering private lands, and check with appropriate government offices for restrictions that may apply to public lands.

-Lands, roads and trails within the boundaries of the National Forest may be subject to restrictions on motor vehicle use. Obtain a Motor Vehicle Use Map, or inquire at the local Forest Service Office for motor vehicle access information.

-Natural hazards may or may not be depicted on the map, and land users should exercise due caution. This map may not be suitable for navigational use.

	Trail		County Road		USDA Forest Service
	Trailhead		Missouri Numbered & Lettered Routes		Private Land
	Horse Camp		National Forest System Road		

