

- Obtain a firewood permit
- Keep your vehicle on open, existing roads, and do not block traffic
- Pay for or repair damage to the national forest resulting from your activities
- Remove branches, bark, and other debris from roads and ditches and scatter them across the landscape
- Remove all trash and litter
- Comply with all fire requirements and fire precaution levels
- If using a power saw between 01 March and 01 October, bring an exhaust system in good repair with a spark arrester of 0.23 inches or less, a pressurized fire extinguisher of more than eight ounce capacity by weight, and a long-handled round point shovel, size 0 or larger blade
- Cut logs shorter than 12 inches in length, and no longer than 12 inches in diameter
- Cut logs shorter than 7 1/2 feet long, unless pre-approved by the district ranger
- Have entire permit and firewood maps in your possession at all times
- Follow all General Conditions and Other Conditions found on the back of your permit

- It is marked as a wildlife tree or a transect tree
- It has any green leaves or needles
- It is a standing western red cedar. Down western red cedar can be cut into lengths less than 16 inches
- It is within 300 feet of fish-bearing streams, natural lakes or natural ponds
- It is within 150 feet of other streams, wetlands, constructed ponds or reservoirs
- It is within 100 feet of a dry stream channel
- It is in a log deck. Some log decks are open to firewood cutting, but must be signed
- It is in an administrative site

Representatives of the Forest Service are available to help you determine where you can safely and legally cut your firewood. If you have problems or concerns about the program, or need assistance finding firewood, please call us, toll free, at **1-877-727-8704** or visit us online at **[www.fs.usda.gov/r06/colville](http://www.fs.usda.gov/r06/colville)**.

Colville National Forest firewood cutting permits, issued by the Forest Service, are not valid on private land/other ownership. Private landowners use a variety of signs to post their property boundaries, and not all private property lines are posted.

It is your responsibility to determine where you are cutting. Always be alert for property boundary signs. Forest Service maps are a good general source of information regarding national forest, private land and other land ownerships and may be purchased at all Forest Service offices.

**For daily updated fire information call 1-800-527-3305  
or visit [www.fs.usda.gov/r06/colville](http://www.fs.usda.gov/r06/colville)**

- Carry gasoline in an approved container equipped with a spout, or use a funnel so that gasoline does not spill on the saw or ground.
- Before starting the saw, move at least 10 feet from the place where you refueled.
- Clear brush and dry material from the cutting area. When you put the saw down, put it on bare ground or rock.
- Do not operate the saw if it overheats or backfires.
- Remove oily rags, used oil filters, garbage and other debris when you leave the site.
- Never smoke while working. Any smoking should be done inside a closed vehicle or while sitting in an area cleared of flammable materials.
- After cutting, remain in the area for one hour to be sure that a fire has not started.

Adjust firewood activity to reflect the current Industrial Fire Precaution Level (IFPL) Precautions and Restrictions. The Forest is broken down into multiple Fire Precautionary Zones (FPZ) and each FPZ may have its own IFPL.

Industrial Fire Precaution Level Precautions and Restrictions					
Level	I	II	III	IV	Precautions / Restrictions
	●	●			Carry Required Safety Equipment listed above
	●	●			Stay in area for one hour after power saw is shut off to watch for fire starts
		●			Shut down power saws at 1:00 p.m.
			●	●	All woodcutting activity prohibited

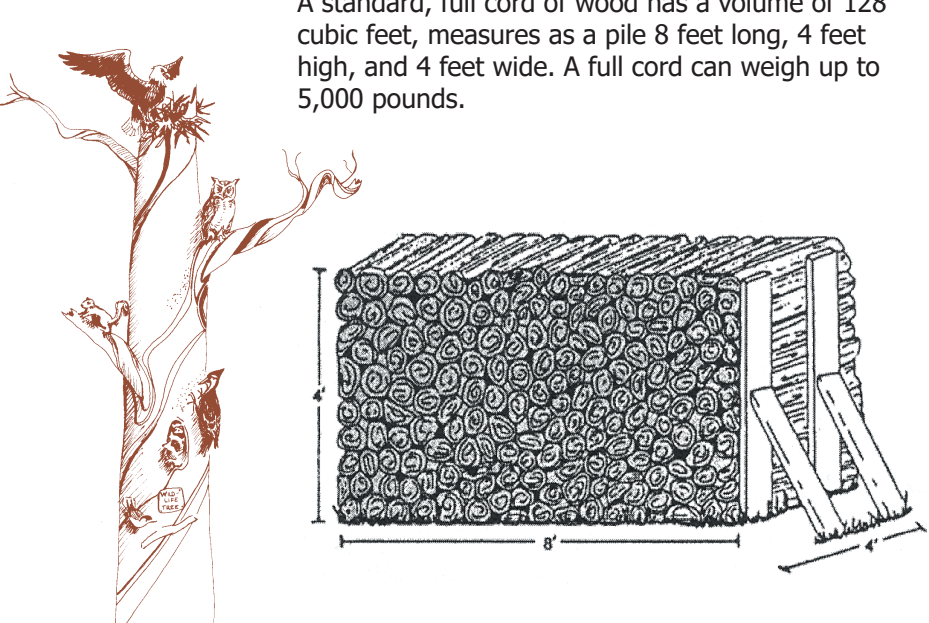
When cutting firewood, be on the lookout for telltale signs of animal life in the trees before you cut. Wildlife needs dead hollows or fallen trees for food and family homes. In many managed forests, certain kinds of trees - both dead and alive - are reserved as homes for many species of birds, mammals, amphibians and reptiles. Nearly all wildlife species benefit from "animal inns" for food, nesting or shelter. Please don't cut trees with paint marks, wildlife signs, broken tops, trunk holes or visible nests, or any other trees prohibited by the permit.

Many kinds of wildlife depend on snags as well as healthy, living trees, defective trees, and logs both on the ground and in the streams.

Courting	Hibernating
Nesting	Hiding
Raising young	Hunting
Feeding	Roosting
Sleeping	Storing Food

Kind of Wood	Heat BTU's	Weight (lbs/cord)	Resin Content
Lodgepole Pine	17.5	2,610	Low
Western Larch	22.3	3,330	Low
Douglas Fir	20.6	2,970	Medium
Ponderosa Pine	17.1	2,240	High
Subalpine Fir	13.6	2,730	Medium

A standard, full cord of wood has a volume of 128 cubic feet, measures as a pile 8 feet long, 4 feet high, and 4 feet wide. A full cord can weigh up to 5,000 pounds.

[illegible]

This product is reproduced from information prepared by the USDA, Forest Service or other suppliers. The Forest Service cannot assure the reliability or suitability of this information. The data and product accuracy may vary due to compilation from various sources, and may not meet National Map Accuracy Standards. The data on this map is dynamic and may change over time. These geospatial data and graphics are not legal documents and are not intended to be used as such. Obtain permission before entering private lands, and check with appropriate government offices for restrictions that may apply to public lands.

**Colville National Forest 2025 Forest User's Map**

**Road and Trail Designations**

- Roads Open to All Vehicles
- Roads Open to Highway Legal Vehicles Only
- State or US Highway
- Other Public Roads
- Trails Open to All Vehicles
- Trails Open to Vehicles 50' or Less in Width
- Trails Open to Motorcycles Only

**Land Ownership**

- Area Closed to Firewood Gathering
- Colville National Forest
- WA Dept of Fish and Wildlife
- WA Dept of Natural Resources
- National Park Service
- US Fish and Wildlife Service
- Bureau of Land Management
- Bureau of Indian Affairs
- Other Land, Including Private

**Legend**

- Administrative Site (Closed to Firewood Cutting)
- Fish Bearing Streams
- Fire Precaution Zones (FPZ)
- Forest Roads Open to Firewood Cutting (\*except where excluded on the permit)
- Forest Roads and Trails Subject to Seasonal Closure
- Forest Service Firewood Permit not Valid (Other Ownership)

**Scale**

0 0.5 1 2 Miles