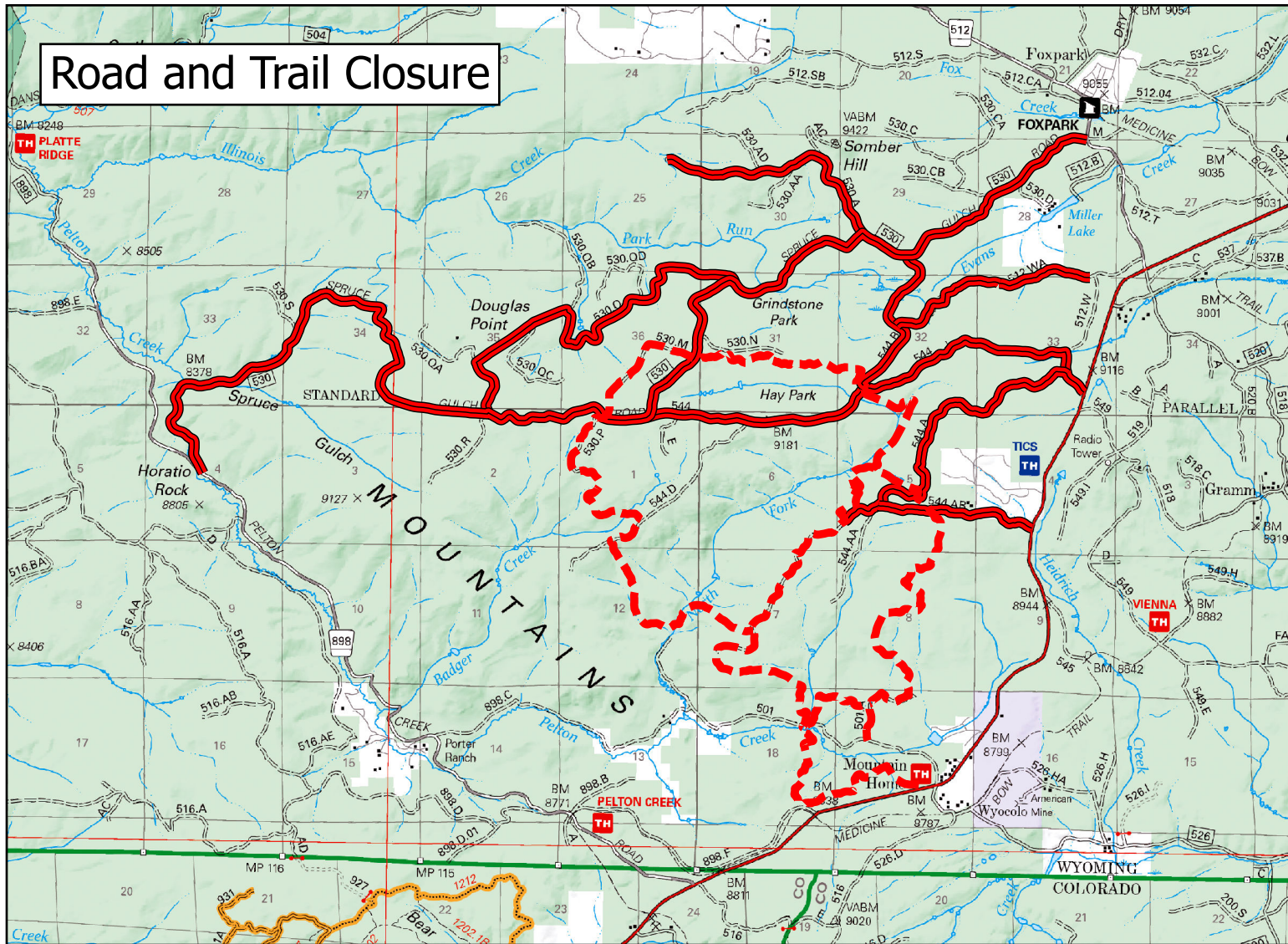


Exhibit A: Order No. MBRTB 2025-LAR-155 Mullen Fire  
Roadside Hazard Tree Road and Trail Closure  
Area Closed by Temporary Special Order for Public Safety  
As of June 1, 2025



For More Information Contact:

Laramie Ranger District  
Medicine Bow-Routt National Forests  
Thunder Basin National Grassland  
Headquarters  
3838 Cherrywood East Loop  
Laramie, WY 82070  
Phone (307) 745-2300  
<https://fs.usda.gov/mbr>

 Described Road

 Described Trail

