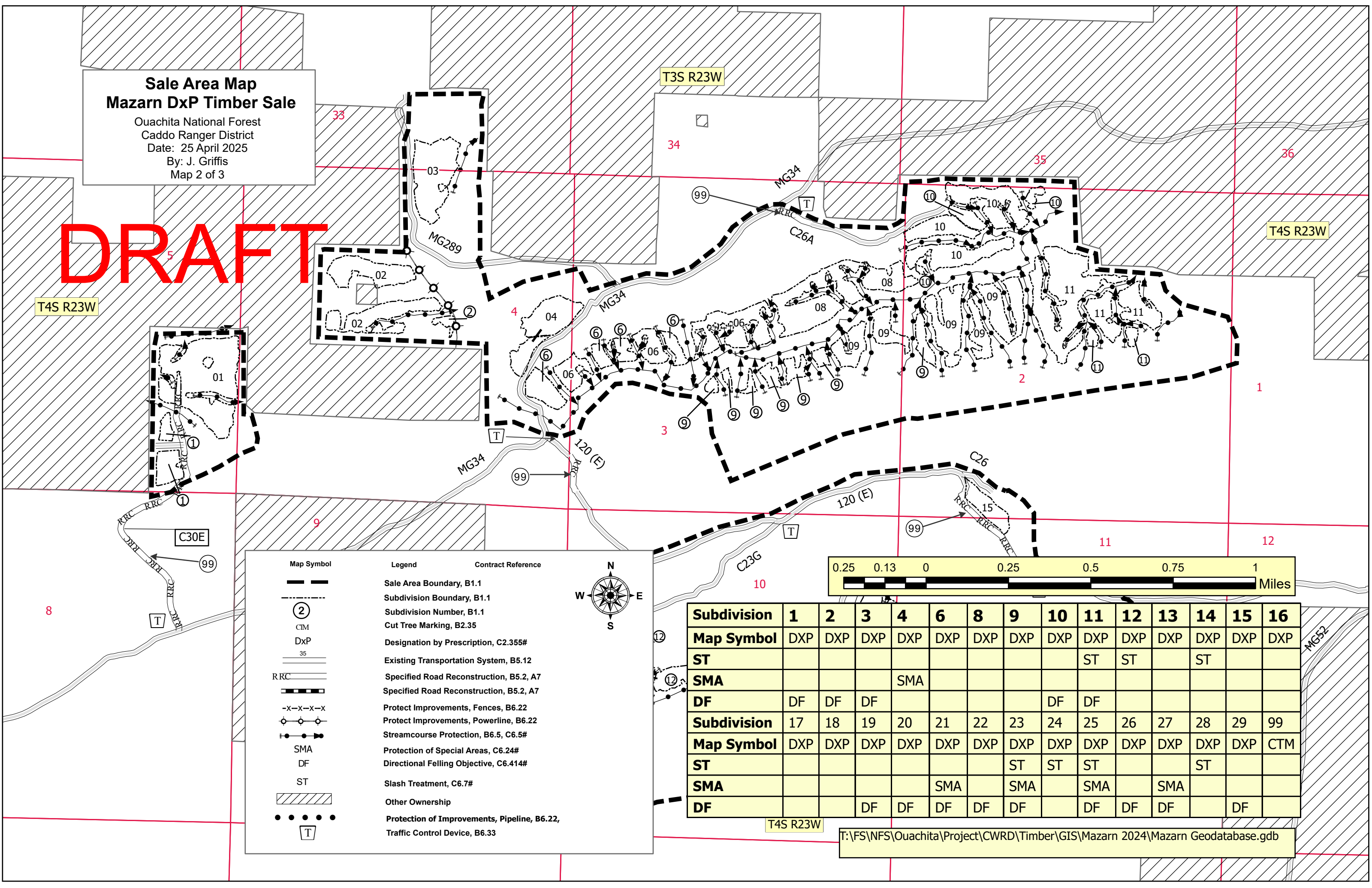


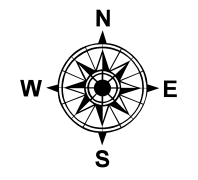
# Sale Area Map Mazarn Dxp Timber Sale

Ouachita National Forest  
Caddo Ranger District  
Date: 25 April 2025  
By: J. Griffis  
Map 2 of 3

# DRAFT



Map Symbol	Legend	Contract Reference
	Sale Area Boundary, B1.1	
	Subdivision Boundary, B1.1	
	Subdivision Number, B1.1	
	Cut Tree Marking, B2.35	
	Designation by Prescription, C2.355#	
	Existing Transportation System, B5.12	
	Specified Road Reconstruction, B5.2, A7	
	Specified Road Reconstruction, B5.2, A7	
	Protect Improvements, Fences, B6.22	
	Protect Improvements, Powerline, B6.22	
	Streamcourse Protection, B6.5, C6.5#	
	SMA	
	DF	
	ST	
	Slash Treatment, C6.7#	
	Other Ownership	
	Protection of Improvements, Pipeline, B6.22,	
	Traffic Control Device, B6.33	



Subdivision	1	2	3	4	6	8	9	10	11	12	13	14	15	16
<b>Map Symbol</b>	DXP	DXP	DXP	DXP	DXP	DXP	DXP	DXP	DXP	DXP	DXP	DXP	DXP	DXP
<b>ST</b>									ST	ST		ST		
<b>SMA</b>				SMA										
<b>DF</b>	DF	DF	DF					DF	DF					
<b>Subdivision</b>	17	18	19	20	21	22	23	24	25	26	27	28	29	99
<b>Map Symbol</b>	DXP	DXP	DXP	DXP	DXP	DXP	DXP	DXP	DXP	DXP	DXP	DXP	DXP	CTM
<b>ST</b>								ST	ST	ST		ST		
<b>SMA</b>					SMA		SMA		SMA		SMA			
<b>DF</b>			DF	DF	DF	DF	DF		DF	DF	DF		DF	

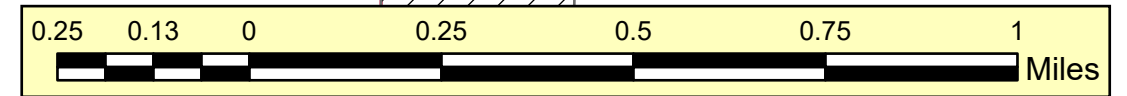
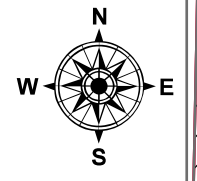
T:\FS\NFS\Ouachita\Project\CWRD\Timber\GIS\Mazarn 2024\Mazarn Geodatabase.gdb

# Sale Area Map Mazarn Dxp Timber Sale

Ouachita National Forest  
Caddo Ranger District  
Date: 25 April 2025  
By: J. Griffis  
Map 1 of 3

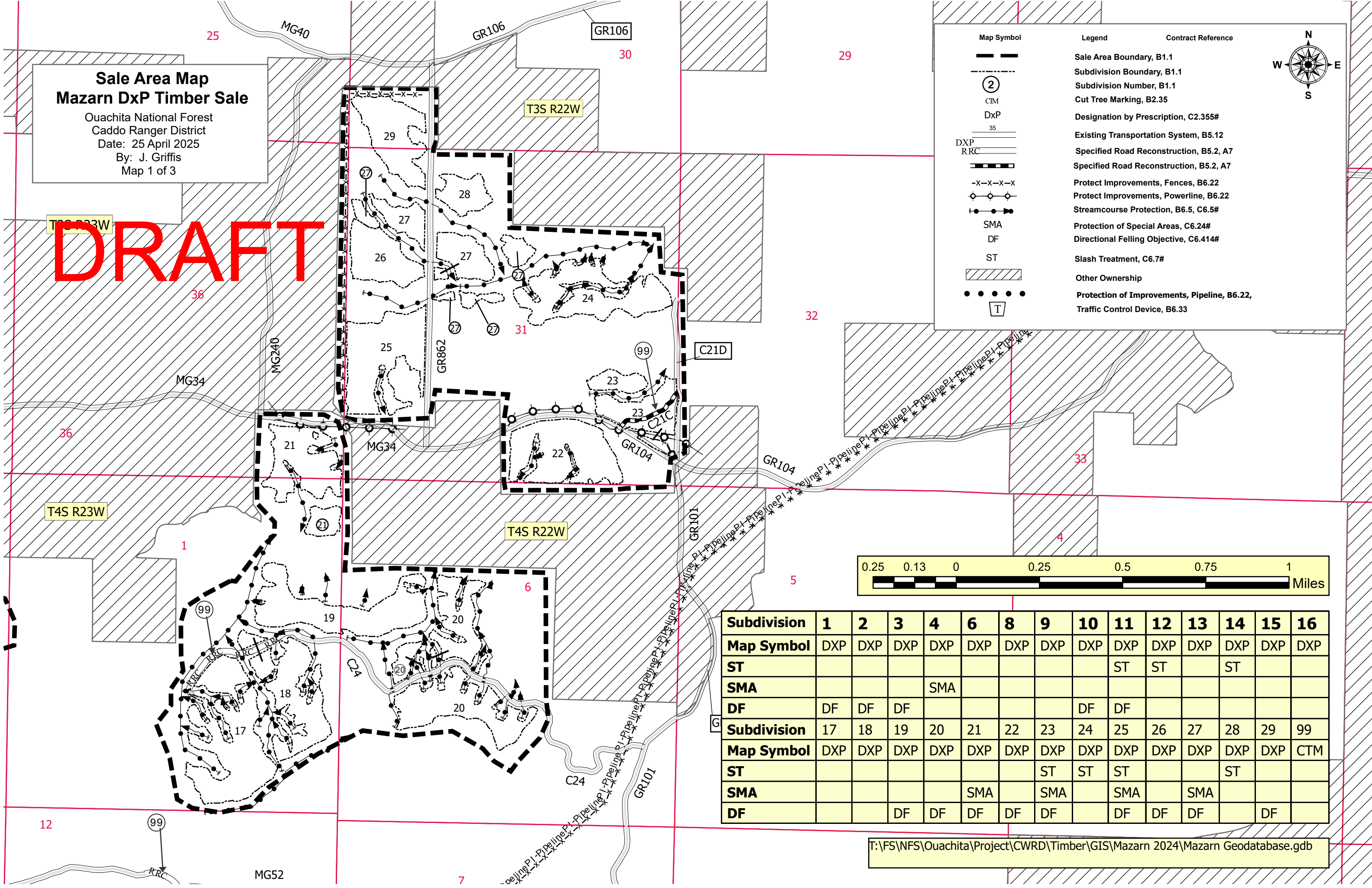
# DRAFT

Map Symbol	Legend	Contract Reference
	Sale Area Boundary, B1.1	
	Subdivision Boundary, B1.1	
	Subdivision Number, B1.1	
	Cut Tree Marking, B2.35	
	Designation by Prescription, C2.355#	
	Existing Transportation System, B5.12	
	Specified Road Reconstruction, B5.2, A7	
	Specified Road Reconstruction, B5.2, A7	
	Protect Improvements, Fences, B6.22	
	Protect Improvements, Powerline, B6.22	
	Streamcourse Protection, B6.5, C6.5#	
	Protection of Special Areas, C6.24#	
	Directional Felling Objective, C6.414#	
	Slash Treatment, C6.7#	
	Other Ownership	
	Protection of Improvements, Pipeline, B6.22,	
	Traffic Control Device, B6.33	



Subdivision	1	2	3	4	6	8	9	10	11	12	13	14	15	16
Map Symbol	DXP	DXP	DXP	DXP	DXP	DXP	DXP	DXP	DXP	DXP	DXP	DXP	DXP	DXP
ST									ST	ST		ST		
SMA				SMA										
DF	DF	DF	DF					DF	DF					
Subdivision	17	18	19	20	21	22	23	24	25	26	27	28	29	99
Map Symbol	DXP	DXP	DXP	DXP	DXP	DXP	DXP	DXP	DXP	DXP	DXP	DXP	DXP	CTM
ST							ST	ST	ST			ST		
SMA					SMA		SMA		SMA		SMA			
DF			DF	DF	DF	DF	DF		DF	DF	DF		DF	

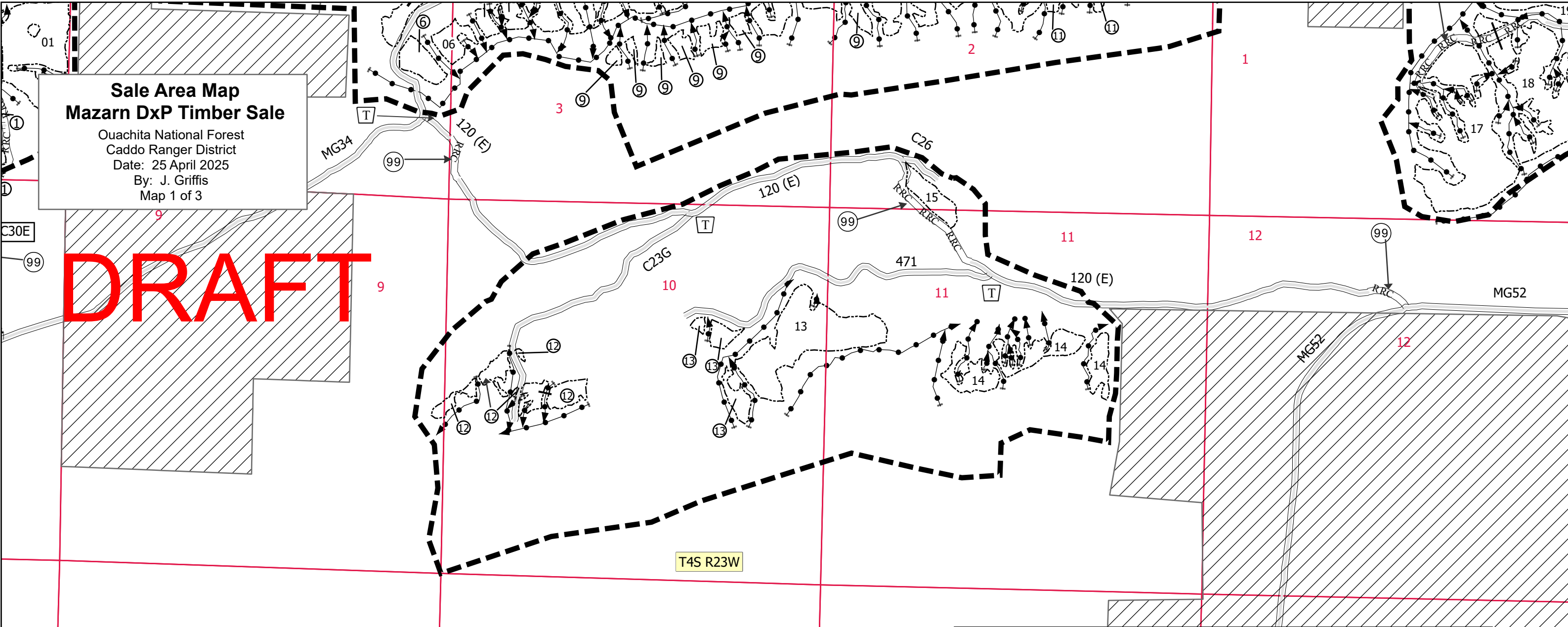
T:\FS\NFS\Ouachita\Project\CWRD\Timber\GIS\Mazarn 2024\Mazarn Geodatabase.gdb



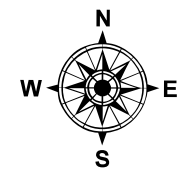
# Sale Area Map Mazarn DXP Timber Sale

Ouachita National Forest  
Caddo Ranger District  
Date: 25 April 2025  
By: J. Griffis  
Map 1 of 3

# DRAFT



Map Symbol	Legend	Contract Reference
	Sale Area Boundary, B1.1	
	Subdivision Boundary, B1.1	
	Subdivision Number, B1.1	
	Cut Tree Marking, B2.35	
	Designation by Prescription, C2.355#	
	Existing Transportation System, B5.12	
	Specified Road Reconstruction, B5.2, A7	
	Specified Road Reconstruction, B5.2, A7	
	Protect Improvements, Fences, B6.22	
	Protect Improvements, Powerline, B6.22	
	Streamcourse Protection, B6.5, C6.5#	
	SMA	Protection of Special Areas, C6.24#
	DF	Directional Felling Objective, C6.414#
	ST	Slash Treatment, C6.7#
	Other Ownership	
	Protection of Improvements, Pipeline, B6.22,	
	Traffic Control Device, B6.33	



Subdivision	1	2	3	4	6	8	9	10	11	12	13	14	15	16
<b>Map Symbol</b>	DXP	DXP	DXP	DXP	DXP	DXP	DXP	DXP	DXP	DXP	DXP	DXP	DXP	DXP
<b>ST</b>									ST	ST		ST		
<b>SMA</b>				SMA										
<b>DF</b>	DF	DF	DF					DF	DF					
<b>Subdivision</b>	17	18	19	20	21	22	23	24	25	26	27	28	29	99
<b>Map Symbol</b>	DXP	DXP	DXP	DXP	DXP	DXP	DXP	DXP	DXP	DXP	DXP	DXP	DXP	CTM
<b>ST</b>							ST	ST	ST			ST		
<b>SMA</b>					SMA		SMA		SMA		SMA			
<b>DF</b>			DF	DF	DF	DF	DF		DF	DF	DF		DF	

T:\FS\NFS\Ouachita\Project\CWRD\Timber\GIS\Mazarn 2024\Mazarn Geodatabase.gdb